

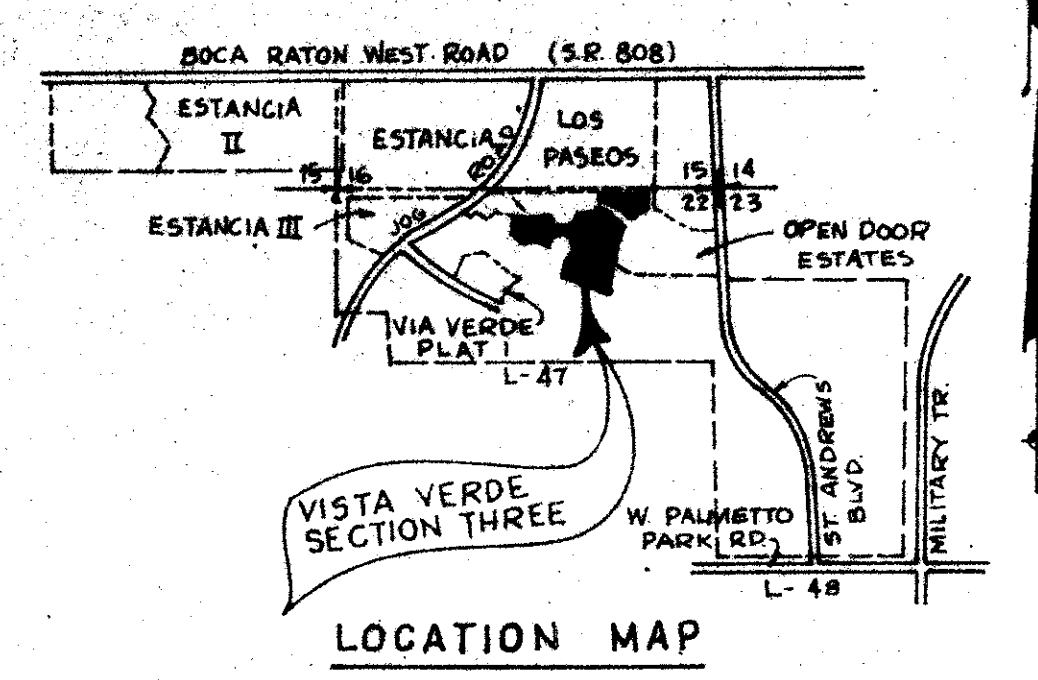
DRAWING NUMBER
46/168

VISTA VERDE SECTION THREE OF VIA VERDE P.U.D. A PORTION OF SECTION 22, TWP. 47 S, RGE. 42 E. PALM BEACH COUNTY, FLORIDA SHEET TWO OF THREE

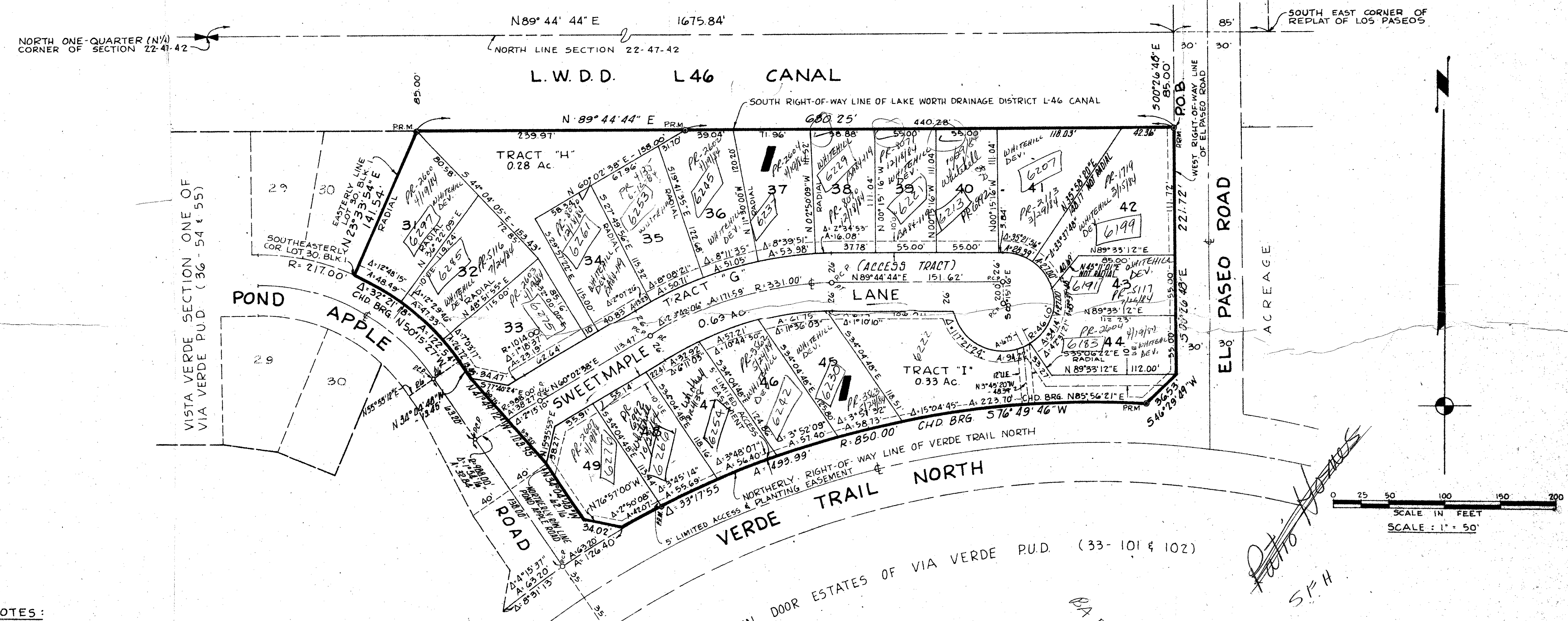
168

State Of Florida
County Of Palm Beach
This Plat Was Filed For
Record At _____ On The
_____ Day Of _____
19____ And Duty Recorded
In Plat Book _____ Pages
_____ And _____
John B. Dunkle
Clerk Of Circuit Court
By: _____

PREPARED BY CARL DESHAY IN THE OFFICES OF
ARTHUR V. STROCK AND ASSOCIATES, INC.
CONSULTING ENGINEERS - LAND SURVEYORS
DEERFIELD BEACH - DELRAY BEACH, FLORIDA
COMM. NO. 603708 F.B.

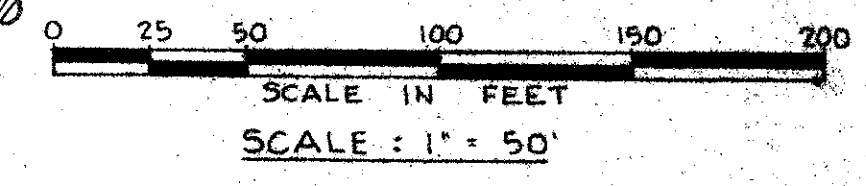


REPLAT OF LOS PASEOS OF VIA VERDE (32-40 & 41)



NOTES:

1. PRM - INDICATES PERMANENT REFERENCE MONUMENT
2. PCP - INDICATES PERMANENT CONTROL POINT
3. A BEARING OF N89°44'44"E WAS ASSUMED FOR THE NORTH LINE OF SECTION 22.47-42 AND ALL BEARINGS SHOWN HEREON ARE RELATED THERETO.
4. U.E - INDICATES UTILITY EASEMENT
5. D.E - INDICATES DRAINAGE EASEMENT
6. NO BUILDING OR ANY KIND OF CONSTRUCTION SHALL BE PLACED ON UTILITY OR DRAINAGE EASEMENTS.
7. NO STRUCTURES TREES OR SHRUBS SHALL BE PLACED ON DRAINAGE EASEMENTS.
8. APPROVAL OF LANDSCAPING ON UTILITY EASEMENTS OTHER THAN WATER AND SEWER SHALL BE ONLY WITH THE APPROVAL OF ALL UTILITIES OCCUPYING SAME.



AREA - 14.59 ACRES
NO. OF UNITS = 45 U.
DENSITY = 3.08 UNITS/AC.
% OPEN SPACE = 36% (5.26 AC.)

Vista Verde 3	
SUBDIVISION #	2147/12
BOOK	40
PAGE	108
FLOOD ZONE	H31
FLOOD MAP #	2004
QUAD #	39
ZONING	
ZIP CODE	33432
PUD NAME	

RS/PUD
22/147/12
Quad 39
Flood #01
FSZ 36 - 39
INSF #11

0323-018

46/168

VISTA VERDE #3 VIA VERDE

DRAWING NUMBER

DRAWING NUMBER

DRAWING NUMBER

PLAN HOLD CORPORATION • IRVINE, CALIFORNIA
REGISTERED PROFESSIONAL LAND SURVEYORS