

DRAWING NUMBER  
46/177

DRAWING NUMBER

DRAWING NUMBER

DRAWING NUMBER

# BOCA WALK

PART OF BOCA DEL MAR, A P.U.D.

A PORTION OF LAND BEING A REPLAT OF A PORTION OF TRACT 35 "BOCA DEL MAR NO. 4" P.U.D., ACCORDING TO THE PLAT THEREOF AS RECORDED IN PLAT BOOK 30 AT PAGE 85 AND LYING IN SECTION 22, TOWNSHIP 47 SOUTH, RANGE 42 EAST, PALM BEACH COUNTY, FLORIDA.

AUGUST, 1983

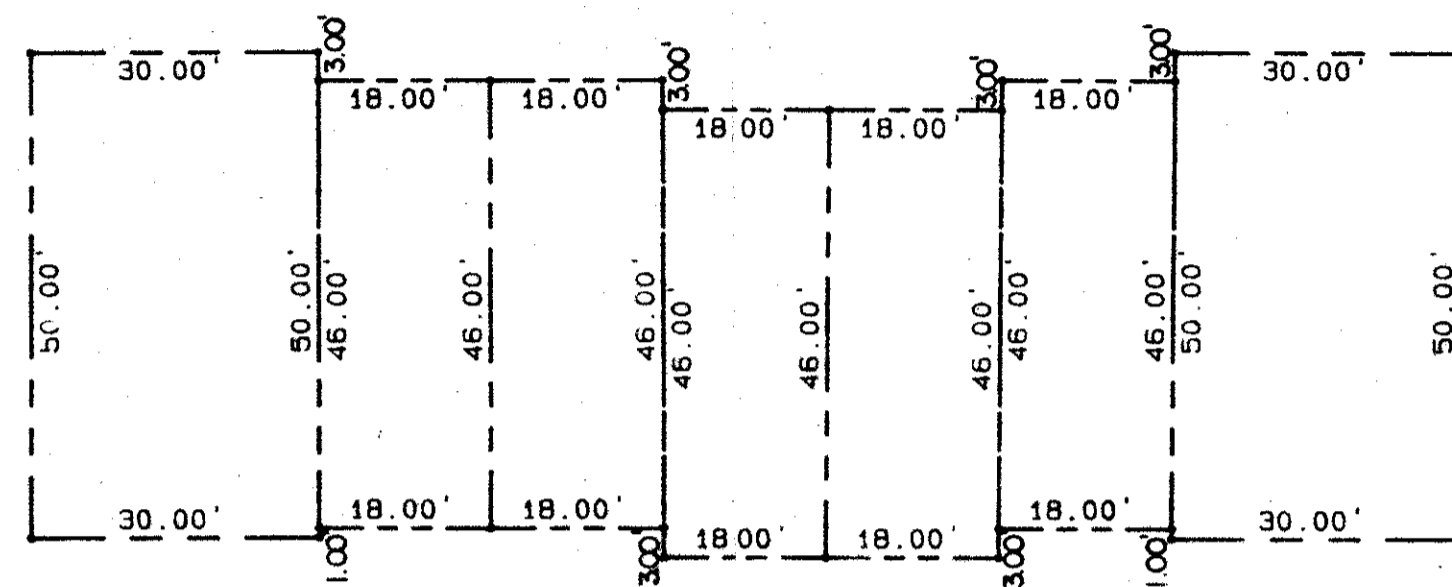
SHEET 3 OF 3

# 177

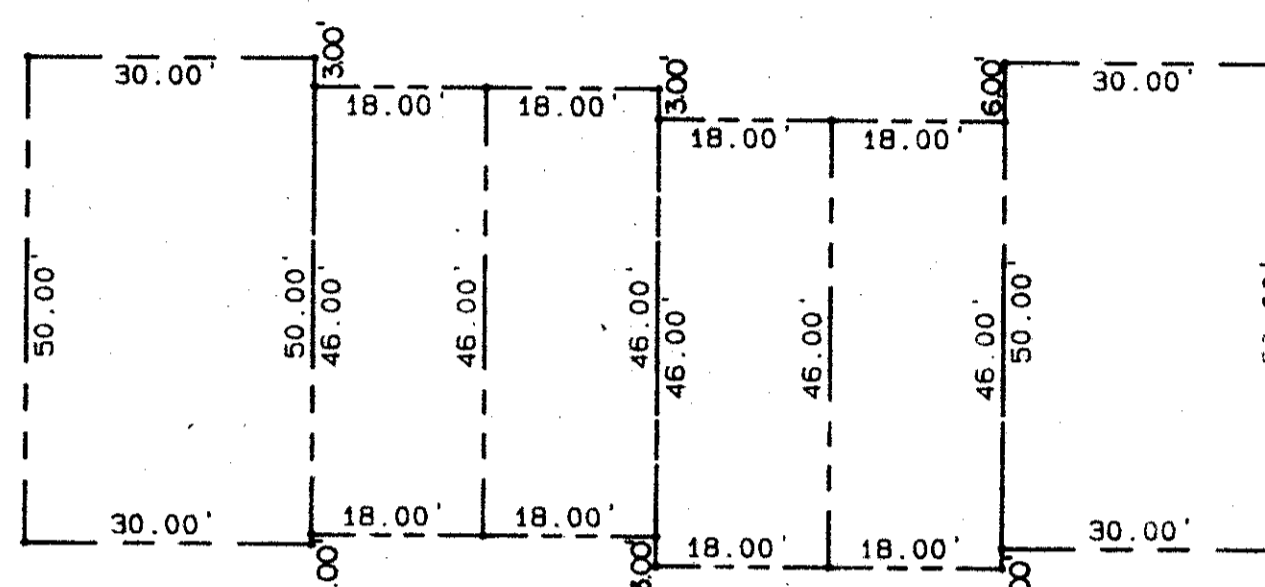
STATE OF FLORIDA  
COUNTY OF PALM BEACH

THIS PLAT WAS FILED FOR RECORD AT THIS DAY OF AD, 1983 AND DULY RECORDED IN PLAT BOOK ON PAGES AND

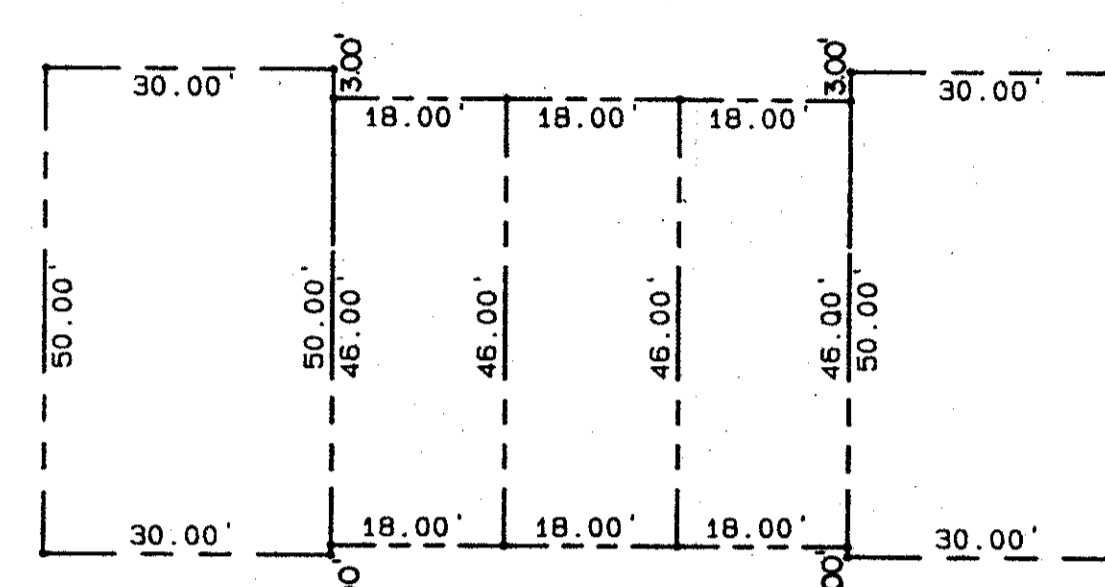
JOHN B. DUNKLE, CLERK  
CIRCUIT COURT  
BY: \_\_\_\_\_, D.C.



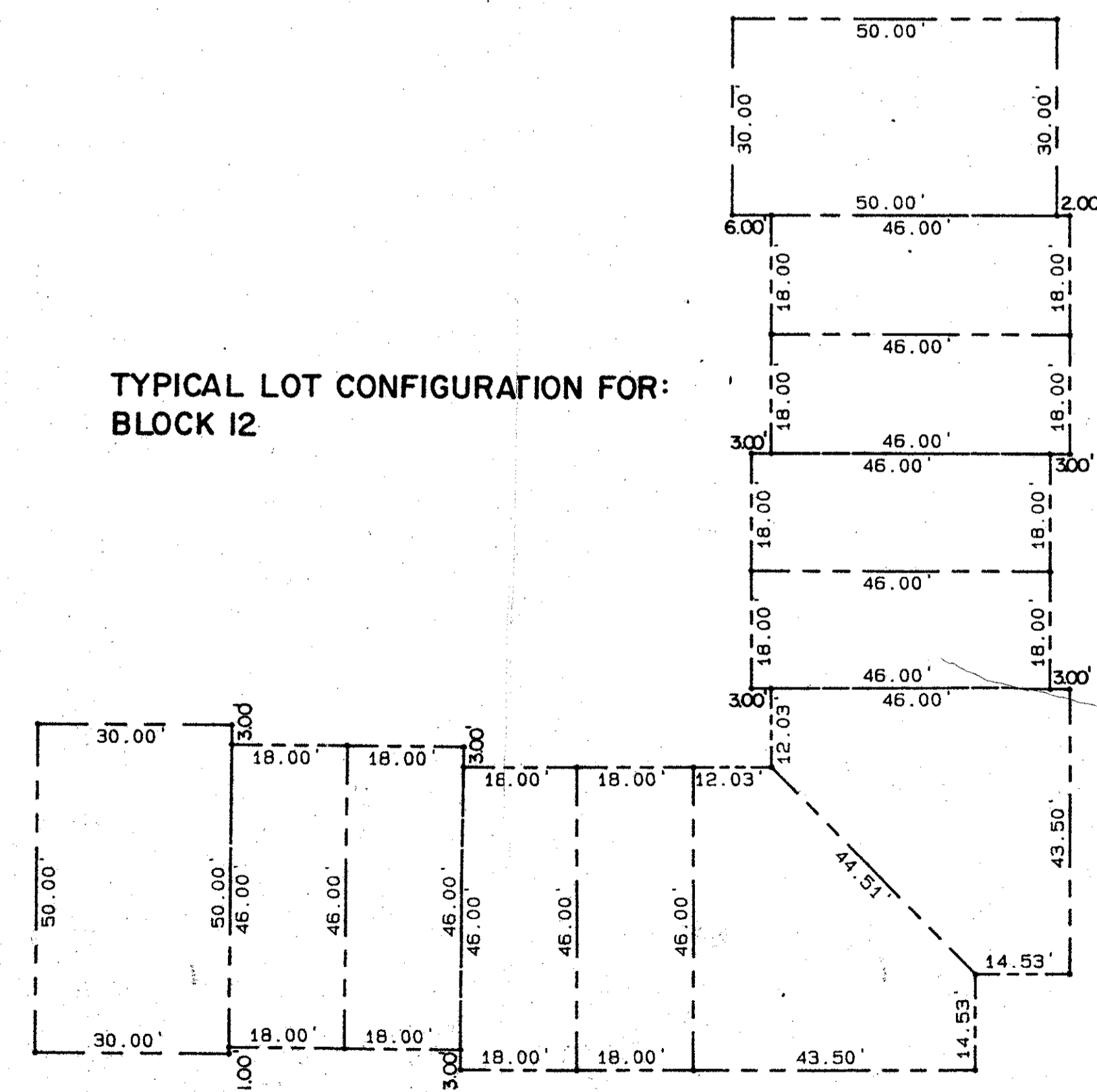
TYPICAL LOT CONFIGURATION FOR:  
BLOCKS 6, 7, 8 & 10



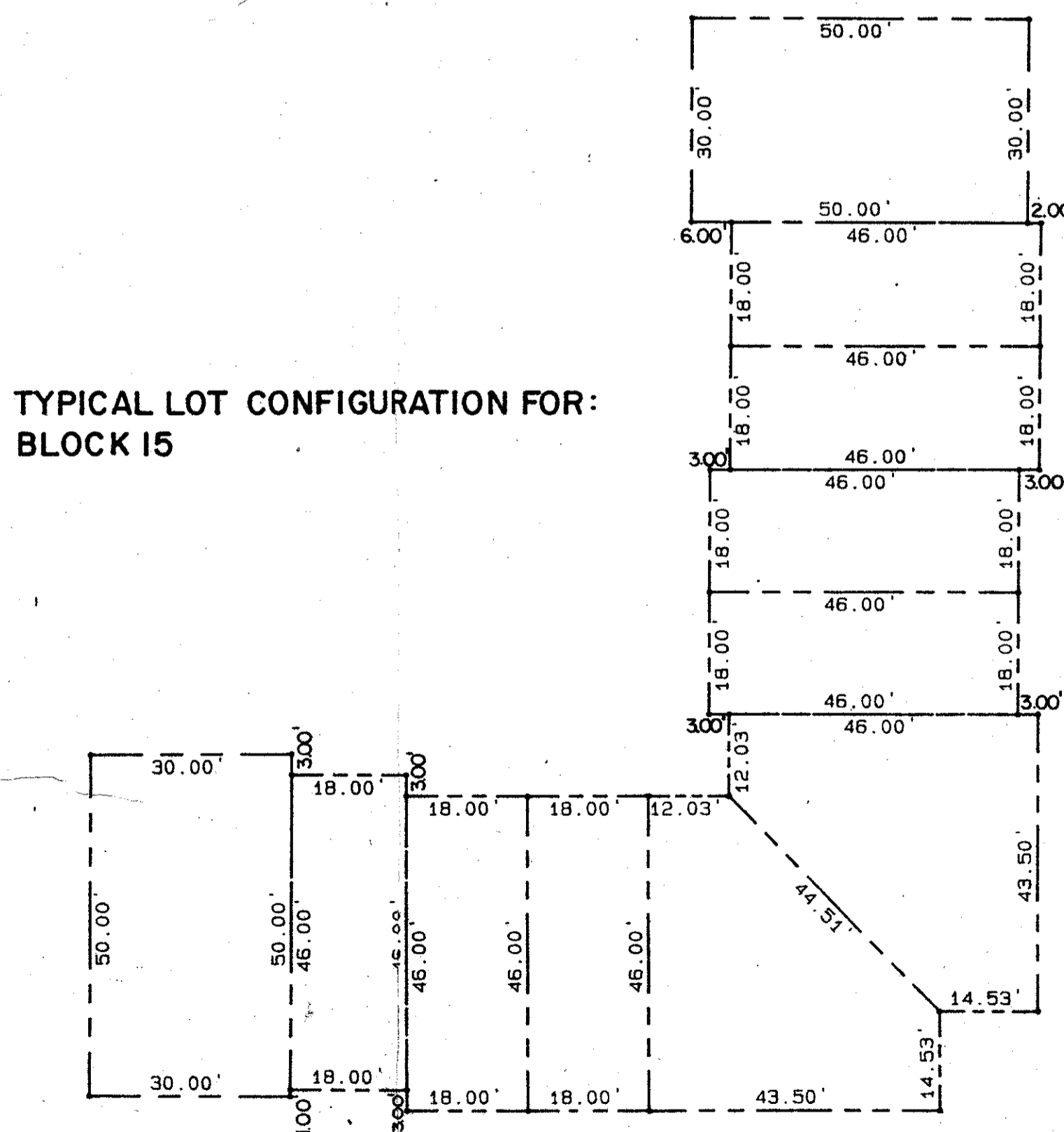
TYPICAL LOT CONFIGURATION FOR:  
BLOCKS 1, 3, 4, 5, 9, 11, 18, & 19



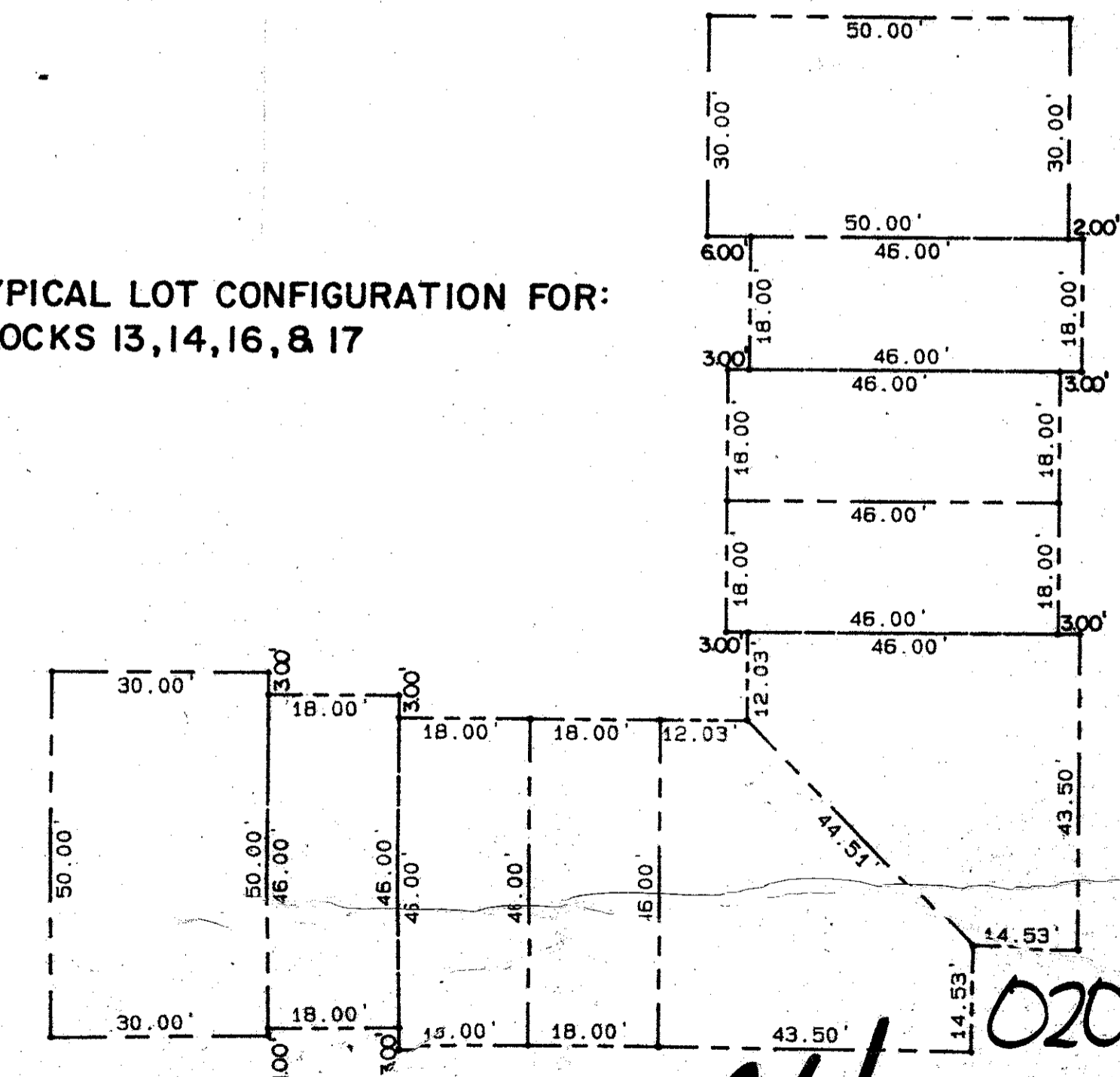
TYPICAL LOT CONFIGURATION FOR:  
BLOCK 2



TYPICAL LOT CONFIGURATION FOR:  
BLOCK 12



TYPICAL LOT CONFIGURATION FOR:  
BLOCK 15



TYPICAL LOT CONFIGURATION FOR:  
BLOCKS 13, 14, 16, & 17

0205-326

46/177

Meridian Surveying and mapping inc. WEST PALM BEACH, FLORIDA

DRAWN	M.E.H.	DATE	JULY 28, 1983
CHECKED		SCALE	1" = 20'
DRAWING NO.	83-P-020		

**BOCA WALK**  
PART OF BOCA DEL MAR, A P.U.D.