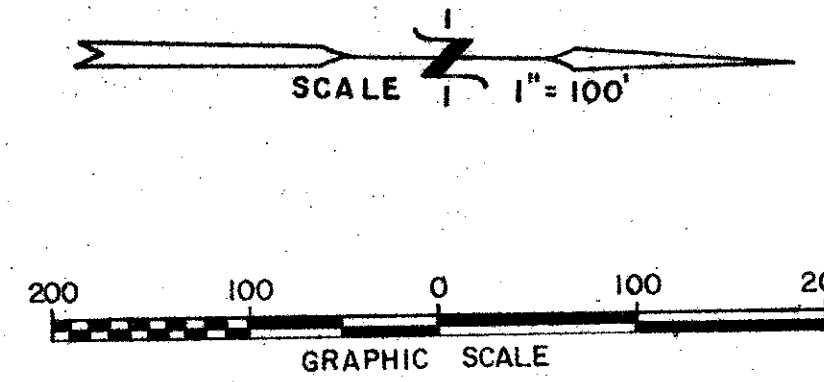


WINDING LAKES SECTION THREE

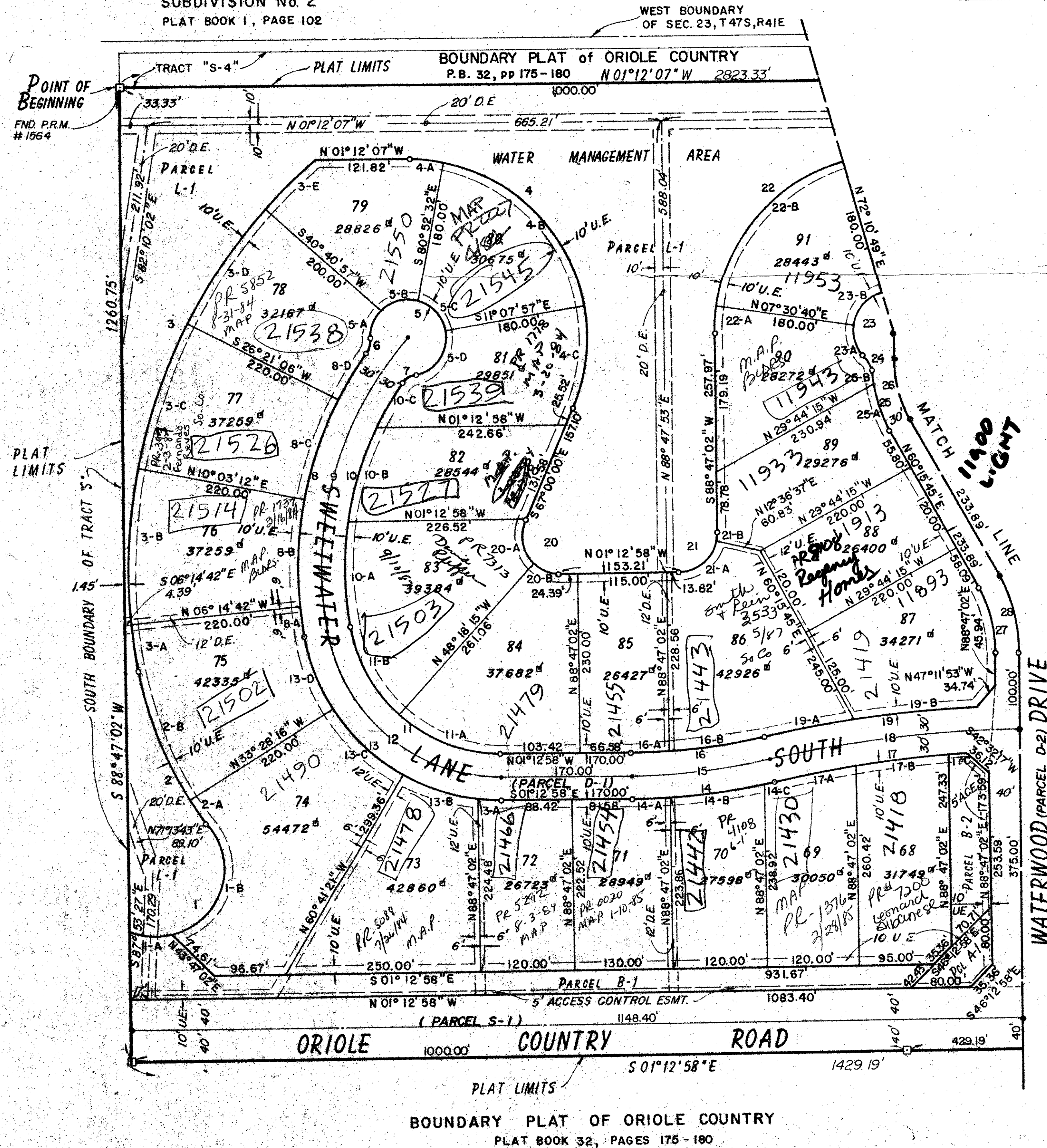
A PART OF A P.U.D.

BEING A REPLAT OF TRACT "S" AND A PORTION OF TRACTS "S-6" AND "S-7", BOUNDARY PLAT OF ORIOLE COUNTRY, AS RECORDED IN PLAT BOOK 32, PAGES 175 THRU 180 INCLUSIVE, PUBLIC RECORDS OF PALM BEACH COUNTY, FLORIDA.
SECTIONS 14 & 23, TOWNSHIP 47 SOUTH, RANGE 41 EAST.

PREPARED BY
CRAIG A SMITH & ASSOCIATES
CONSULTING ENGINEERS & SURVEYORS
CORAL SPRINGS, FLORIDA
By: Edward J Mizo, P.L.S. No. 3376



FLORIDA FRUIT LANDS COMPANY'S
SUBDIVISION No. 2
PLAT BOOK 1, PAGE 102



WINDING LAKES SECTION TWO
PLAT BOOK 42, PAGES 102 & 103

BOUNDARY PLAT OF ORIOLE COUNTRY
PLAT BOOK 32, PAGES 175 - 180

CURVE DATA			
No.	RADIUS	DELTA	ARC
1	90.00'	144°03'29"	226.29'
1-A	"	31°35'09"	49.62'
1-B	"	112°28'20"	176.67'
2	475.00'	26°55'50"	223.26'
2-A	"	04°25'39"	36.71'
2-B	"	22°30'11"	186.56'
3	705.37'	58°58'23"	726.02'
3-A	"	04°43'23"	56.15'
3-B	"	18°17'54"	200.65'
3-C	"	18°17'54"	200.65'
3-D	"	14°19'51"	176.43'
3-E	"	07°18'22"	90.15'
4	230.00'	114°12'07"	458.44'
4-A	"	10°19'35"	41.45'
4-B	"	69°44'35"	279.97'
4-C	"	34°07'57"	137.02'
5	50.00'	265°28'18"	231.67'
5-A	"	46°57'04"	40.10'
5-B	"	58°25'31"	51.00'
5-C	"	58°44'35"	60.86'
5-D	"	91°20'08"	79.71'
6	25.00'	39°53'17"	17.40'
7	25.00'	46°22'01"	20.23'
8	485.37'	45°35'16"	386.19'
8-A	"	04°43'23"	40.01'
8-B	"	18°17'54"	138.07'
8-C	"	18°17'54"	138.07'
8-D	"	06°18'04"	70.04'
9	455.37'	51°39'02"	410.50'
10	425.37'	44°48'15"	332.63'
10-A	"	18°44'41"	139.16'
10-B	"	17°00'37"	126.29'
10-C	"	09°02'58"	67.18'
11	190.00'	80°14'53"	315.13'
11-A	"	30°14'53"	273.12'
11-B	"	37°20'10"	127.07'
12	225.00'	80°14'53"	315.13'
13	255.00'	80°14'53"	357.15'
13-A	"	07°06'53"	31.67'
13-B	"	23°24'44"	104.20'
13-C	"	27°13'05"	121.14'
13-D	"	22°30'11"	100.15'
14	873.05'	12°01'17"	183.18'
14-A	"	03°10'45"	48.44'
14-B	"	07°56'36"	121.04'
14-C	"	00°53'56"	13.70'
15	843.05'	12°01'17"	176.98'
16	813.05'	12°01'17"	170.59'
16-A	"	03°24'50"	48.45'
16-B	"	08°36'27"	122.14'
17	1520.00'	09°31'46"	252.81'
17-A	"	04°04'48"	108.24'
17-B	"	04°32'48"	120.62'
17-C	"	00°54'09"	23.95'
18	1530.00'	18°01'17"	325.21'
19	1580.00'	10°08'27"	277.35'
19-A	"	04°19'32"	119.28'
19-B	"	05°43'55"	158.07'
20	50.00'	114°12'58"	99.67'
20-A	"	71°18'15"	62.23'
20-B	"	42°54'43"	37.46'
21	50.00'	90°00'00"	78.54'
21-A	"	76°10'25"	66.47'
21-B	"	13°49'35"	12.07'
22	230.00'	165°42'58"	665.23'
22-A	"	08°43'38"	35.03'
22-B	"	64°40'09"	259.60'
22-C	"	64°40'09"	259.60'
22-D	"	27°39'02"	111.00'
23	50.00'	265°14'48"	231.47'
23-A	"	52°15'35"	45.61'
23-B	"	64°40'09"	56.43'
23-C	"	64°40'09"	56.43'
23-D	"	83°38'55"	73.00'
24	25.00'	39°15'24"	17.13'
25	200.00'	24°14'44"	84.63'
25-A	"	18°43'25"	65.36'
25-B	"	08°31'18"	19.27'
26	170.00'	28°31'17"	84.62'
27	166.72'	28°31'17"	82.99'
28	196.72'	28°31'17"	97.93'
29	226.72'	28°31'17"	112.86'
29-A	"	22°11'42"	87.83'
29-B	"	06°19'35"	25.03'
30	140.00'	21°00'52"	51.35'
30-A	"	00°52'29"	2.13'
30-B	"	20°08'33"	49.22'
31	25.00'	49°13'15"	21.48'

CURVE DATA			
No.	RADIUS	DELTA	ARC
32	600.00'	14°14'15"	149.09'
32-A	"	00°35'18"	6.85'
32-B	"	12°32'27"	131.33'
32-C	"	01°02'34"	10.92'
33	100.00'	53°03'54"	92.62'
33-A	"	26°44'36"	46.66'
33-B	"	26°19'18"	45.94'
34	1600.00'	13°20'18"	419.04'
34-A	"	02°37'50"	82.64'
34-B	"	04°01'58"	126.69'
34-C	"	04°02'04"	126.75'
34-D	"	02°38'26"	82.96'
35	950.00'	11°14'16"	186.33'
35-A	"	02°48'15"	46.50'
35-B	"	08°26'01"	139.83'
36	960.00'	26°15'04"	435.26'
36-A	"	08°26'01"	139.84'
36-B	"	09°07'20"	134.67'
36-C	"	07°16'57"	120.75'
36-D	"	02°24'45"	40.00'
37	200.00'	90°00'00"	314.16'
37-A	"	20°29'19"	71.52'
37-B	"	22°00'00"	76.79'
37-C	"	"	"
37-D	"	"	"
37-E	"	"	"
37-F	"	"	"
38	200.00'	68°09'25"	237.91'
38-A	"	22°00'00"	76.79'
38-B	"	22°00'00"	76.79'
38-C	"	24°09'25"	84.32'
39	180.00'	44°16'13"	123.63'
40	130.00'	"	100.45'
41	100.00'	"	77.27'
42	300.00'	29°45'45"	155.84'
42-A	"	06°56'17"	39.33'
42-B	"	22°49'28"	119.51'
43	1900.00'	09°22'20"	330.80'
43-A	"	02°56'33"	97.58'
43-B	"	04°37'13"	153.22'
43-C	"	01°48'34"	60.00'
44	230.00'	100°17'15"	608.29'
44-A	"	49°34'44"	199.02'
44-B	"	60°00'00"	240.86'
44-C	"	40°42'32"	163.42'
45	50.00'	267°38'19"	231.81'
45-A	"	46°21'57"	40.46'
45-B	"	64°40'54"	56.45'
45-C	"	60°00'00"	52.36'
45-D	"	94°35'28"	82.55'
46	25.00'	44°38'58"	18.17'
47	25.00'	44°06'08"	19.24'
48	1162.78'	19°15'54"	390.97'
48-A	"	07°23'42"	150.08'
48-B	"	06°54'57"	120.06'
48-C	"	09°57'14"	120.83'
49	1192.78'	21°46'23"	453.27'
50	1222.78'	16°51'07"	359.64'
50-A	"	03°24'16"	72.66'
50-B	"	09°09'04"	109.93'
50-C	"	04°35'48"	99.15'
50-D	"	03°39'01"	77.90'
51	420.00'	68°46'48"	504.18'
51-A	"	24°46'48"	181.65'
51-B	"	22°00'00"	161.27'
51-C	"	22°00'00"	161.27'
52	450.00'	76°47'02"	603.06'
52-A	"	49°31'31"	368.97'
52-B	"	27°15'31"	214.09'
53	480.00'	43°16'22"	362.52'
53-A	"	15°27'06"	129.45'
53-B	"	13°27'35"	112.76'
53-C	"	14°21'41"	120.31'
54	25.00'	42°50'01"	18.69'
55	50.00'	265°14'48"	231.47'
55-A	"	67°36'35"	58.99'
55-B	"	62°56'35"	54.93'
55-C	"	62°56'35"	54.93'
55-D	"	69°53'26"	60.99'
56	230.00'	83°31'54"	335.32'
56-A	"	40°02'25"	160.75'
56-B	"	43°29'29"	174.59'
57	25.00'	42°50'01"	18.69'
58	480.00'	12°00'22"	175.95'
58-A	"	12°37'14"	105.73'
58-B	"	08°23'08"	70.25'
59	1680.00'	24°49'57"	728.13'
59-A	"	02°47'44"	81.97'
59-B	"	02°02'47"	60.00'
59-C	"	04°08'53"	121.63'
59-D	"	04°27'06"	130.53'
59-E	"	04°26'06"	130.04'
59-F	"	08°15'02"	153.95'
59-G	"	01°42'19"	50.00'

0275-308

46/185

SUBDIVISION #
BOOK #
FLOOD ZONE #
ROAD #
SE
PLD NAME

PAGE #
FLOOD MAP #
ZONING
ZIP CODE

□ = P.R.M. - PERMANENT REFERENCE MONUMENT
● = P.C.P. - PERMANENT CONTROL POINT

DRAWING NUMBER
46/185

DRAWING NUMBER

DRAWING NUMBER

DRAWING NUMBER