

DRAWING NUMBER
46/195

DRAWING NUMBER

DRAWING NUMBER

DRAWING NUMBER

PLAN HOLD CORPORATION • IRVINE, CALIFORNIA
THE PALM BEACH FARMS COMPANY'S PLAT NO. 3
(P.B. 2, PGS. 45-54)

NO.	DELTA	RADIUS	LENGTH
C1	34° 27' 46"	143.90	86.55
C2	17° 13' 53"	78.90	23.73
C3	90° 00' 00"	5.00	7.85
C4	90° 00' 00"	5.00	7.85
C5	24° 20' 26"	149.50	63.51
C6	53° 40' 42"	11.96	11.21
C7	53° 40' 42"	11.96	11.21
C8	53° 40' 42"	11.96	11.21
C9	53° 40' 42"	11.96	11.21
C10	24° 20' 26"	149.50	63.51
C11	24° 20' 26"	149.50	63.51
C12	65° 39' 34"	18.91	21.67
C13	53° 40' 42"	11.96	11.21
C14	53° 40' 42"	11.96	11.21
C15	65° 39' 34"	18.91	21.67
C16	24° 20' 26"	149.50	63.51
C17	90° 00' 00"	5.00	7.85
C18	90° 00' 00"	5.00	7.85
C19	90° 00' 00"	6.00	9.42
C20	90° 00' 00"	6.00	9.42
C21	90° 00' 00"	7.85	11.21
C22	24° 20' 26"	149.50	63.51
C23	53° 40' 42"	11.96	11.21
C24	53° 40' 42"	11.96	11.21
C25	53° 40' 42"	11.96	11.21
C26	53° 40' 42"	11.96	11.21
C27	53° 40' 42"	11.96	11.21
C28	24° 20' 26"	149.50	63.51
C29	24° 20' 26"	149.50	63.51
C30	65° 39' 34"	18.91	21.67
C31	53° 40' 42"	11.96	11.21
C32	53° 40' 42"	11.96	11.21
C33	53° 40' 42"	11.96	11.21
C34	53° 40' 42"	11.96	11.21
C35	24° 20' 26"	149.50	63.51
C36	90° 00' 00"	5.00	7.85
C37	90° 00' 00"	5.00	7.85
C38	90° 00' 00"	5.00	7.85
C39	90° 00' 00"	5.00	7.85
C40	27° 03' 58"	52.00	246.01

NO.	BEARING	DISTANCE
T1	N00° 21' 49" W	12.00
T2	N89° 05' 05" E	5.00
T3	N89° 05' 05" E	10.00
T4	S00° 54' 55" W	10.00
T5	N00° 54' 55" W	5.00
T6	S89° 05' 05" W	5.00
T7	S39° 05' 05" W	8.14
T8	S89° 05' 05" W	5.00
T9	N89° 05' 05" E	5.00
T10	S00° 54' 55" E	70.51
T11	S89° 05' 05" W	30.41
T12	N00° 54' 55" W	15.00
T13	S89° 05' 05" W	27.00
T14	S00° 54' 55" E	15.00
T15	S89° 05' 05" W	14.18
T16	S89° 05' 05" W	27.60
T17	N00° 54' 55" W	15.00
T18	S89° 05' 05" W	18.00
T19	S00° 54' 55" E	15.00
T20	S89° 05' 05" W	26.04
T21	N89° 05' 05" E	22.00
T22	N00° 21' 49" W	14.00
T23	N89° 38' 11" E	22.00
T24	S89° 38' 11" W	22.00
T25	N00° 21' 49" W	14.00
T26	S89° 38' 11" W	22.00
T27	N89° 05' 05" E	24.91
T28	N89° 05' 05" E	24.91
T29	S00° 54' 55" E	15.00
T30	N89° 05' 05" E	18.00

NO.	BEARING	DISTANCE
T31	N00° 54' 55" W	15.00
T32	N89° 05' 05" E	27.60
T33	N89° 05' 05" E	14.17
T34	S00° 54' 55" E	15.00
T35	N89° 05' 05" E	27.00
T36	N00° 54' 55" W	15.00
T37	N89° 05' 05" E	29.29
T38	S00° 54' 55" E	70.51
T39	N89° 05' 05" E	5.00
T40	N89° 05' 05" E	12.46
T41	S00° 54' 55" E	25.04
T42	S89° 05' 05" W	15.08
T43	N00° 54' 55" W	10.00
T44	S89° 05' 05" W	10.00
T45	N89° 05' 05" E	41.87
T46	S00° 54' 55" E	8.86
T47	N59° 05' 05" E	10.66
T48	S30° 54' 55" E	11.55
T49	S89° 05' 05" W	15.77
T50	N00° 54' 55" W	10.00
T51	N89° 05' 05" E	10.00
T52	S30° 54' 55" E	15.01
T53	S30° 54' 55" E	13.86
T54	N89° 05' 05" E	7.50
T55	N89° 05' 05" E	12.00
T56	N89° 05' 05" E	7.50
T57	N00° 54' 55" W	12.00
T58	N00° 54' 55" W	12.00
T59	S89° 05' 05" W	7.50
T60	S89° 05' 05" W	12.00

NO.	BEARING	DISTANCE
T61	S89° 05' 05" W	7.50
T62	S89° 05' 05" W	34.17
T63	S89° 05' 05" W	12.00
T64	N36° 38' 35" E	23.86
T65	S89° 05' 05" W	11.00
T66	S36° 38' 35" W	26.86
T67	S89° 38' 11" W	7.97
T68	N89° 05' 05" E	11.00
T69	N46° 25' 03" W	23.29
T70	N89° 05' 05" E	12.00
T71	N89° 05' 05" E	34.58
T72	N00° 21' 49" W	14.51
T73	N00° 21' 49" W	10.00
T74	N89° 38' 11" E	4.00
T75	N00° 21' 49" W	14.08
T76	N00° 21' 49" W	12.00
T77	S89° 38' 11" W	5.00
T78	N89° 38' 11" E	5.00
T79	S00° 21' 49" E	5.00
T80	S29° 05' 05" W	11.55
T81	N89° 38' 11" E	24.28
T82	S29° 05' 05" W	11.48
T83	S89° 38' 11" W	18.63
T84	S29° 05' 05" W	20.34
T85	S40° 54' 55" E	10.00
T86	S00° 54' 55" E	10.00
T87	N49° 05' 05" E	10.00
T88	S40° 54' 55" E	10.00
T89	S49° 05' 05" W	10.00
T90	N89° 05' 05" E	5.00
T91	S89° 05' 05" W	5.00
T92	S89° 05' 05" W	10.00
T93	N00° 54' 55" W	10.00
T94	N89° 05' 05" E	15.77
T95	N49° 05' 05" E	10.00
T96	S40° 54' 55" E	10.00

THE PALM BEACH FARMS COMPANY'S PLAT NO. 3
(P.B. 2, PGS. 45-54)

ROSEWOOD

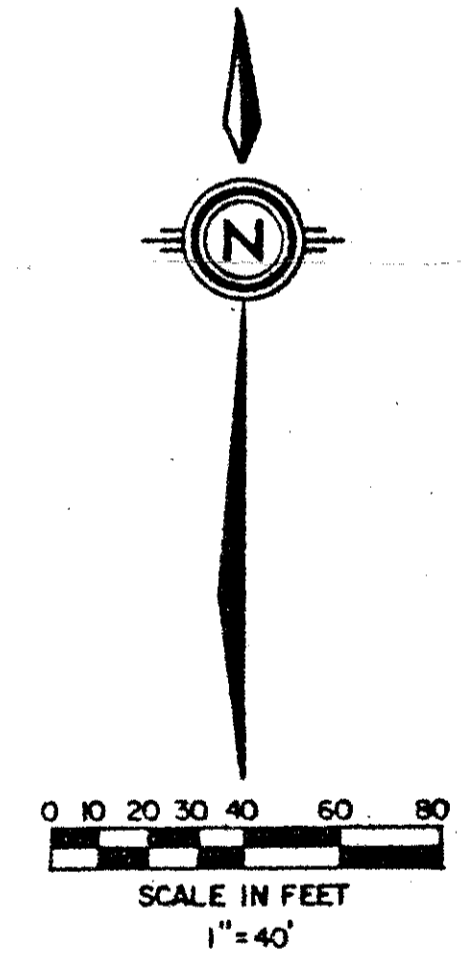
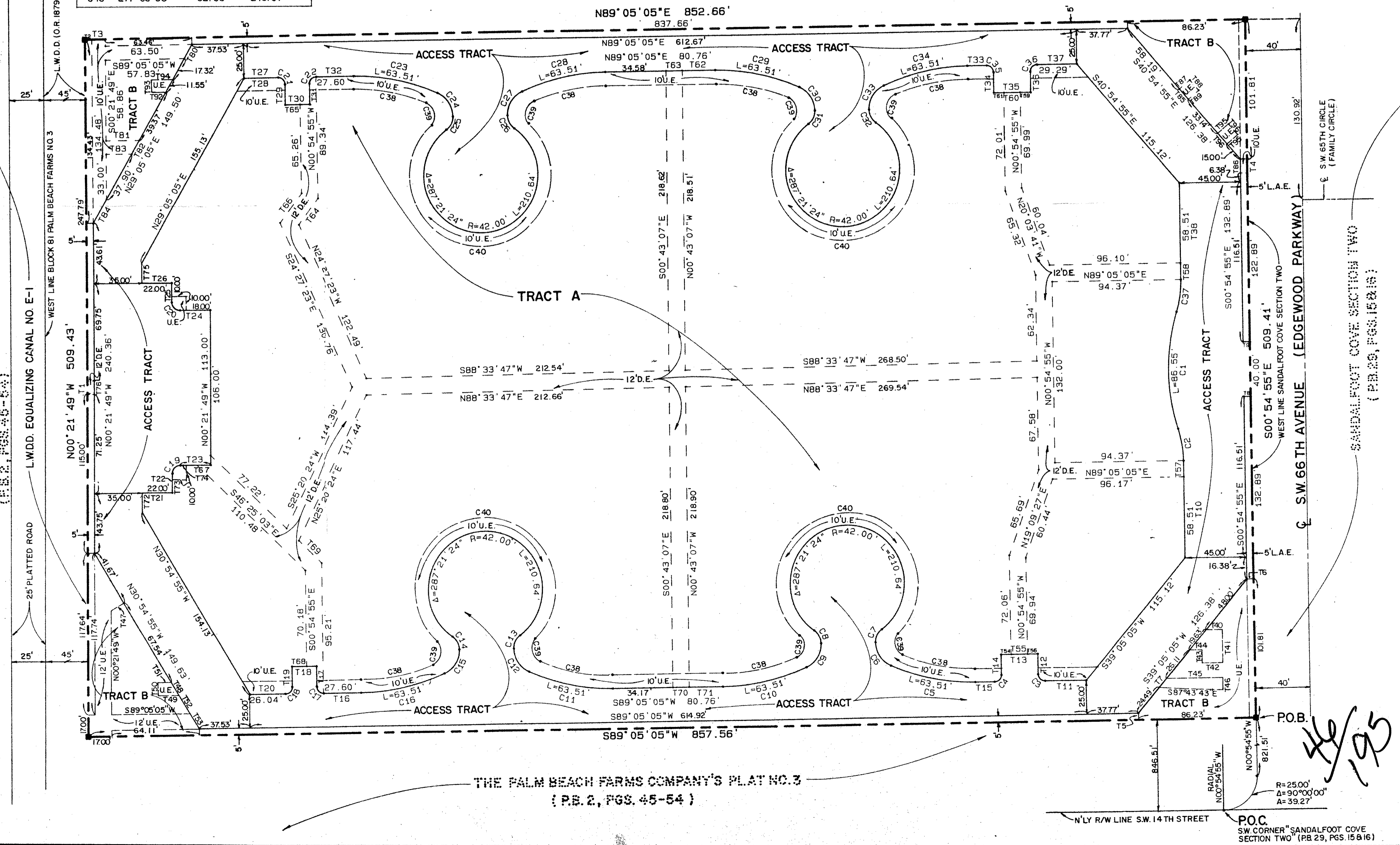
SITUATE IN SECTION 30, TOWNSHIP 47 SOUTH, RANGE 42 EAST,
PALM BEACH COUNTY, FLORIDA BEING A REPLAT OF A PORTION
OF BLOCK 81 OF THE PALM BEACH FARMS COMPANY'S PLAT NO.3
(PLAT BOOK 2, PAGES 45 THROUGH 54).

JULY, 1983

SHEET 2 OF 2

STATE OF FLORIDA
COUNTY OF PALM BEACH
THIS PLAT WAS FILED FOR
RECORD AT _____ DAY OF _____
AD, 1983 AND DULY RECORDED
IN PLAT BOOK _____ ON PAGES
_____ AND _____
JOHN B. DUNKLE, CLERK
CIRCUIT COURT
BY: _____, D.C.

195



0400-000

46/195

THE PALM BEACH FARMS COMPANY'S PLAT NO. 3
(P.B. 2, PGS. 45-54)

Meridian Surveying and mapping inc. WEST PALM BEACH, FLORIDA

DRAWN	M.E.H.	DATE	JULY, 1983
CHECKED		SCALE	1" = 40'
DRAWING NO.	83-P-027		

ROSE WOOD

POC
SW CORNER SANDALFOOT COVE SECTION TWO
(P.B. 29, PGS. 15 & 16)