

47/20

AMENDED PLAT OF ROSEWOOD

SITUATE IN SECTION 30, TOWNSHIP 47 SOUTH, RANGE 42 EAST, PALM BEACH COUNTY, FLORIDA BEING AN AMENED PLAT OF ROSEWOOD (PLAT BOOK 46, PAGES 194 AND 195).

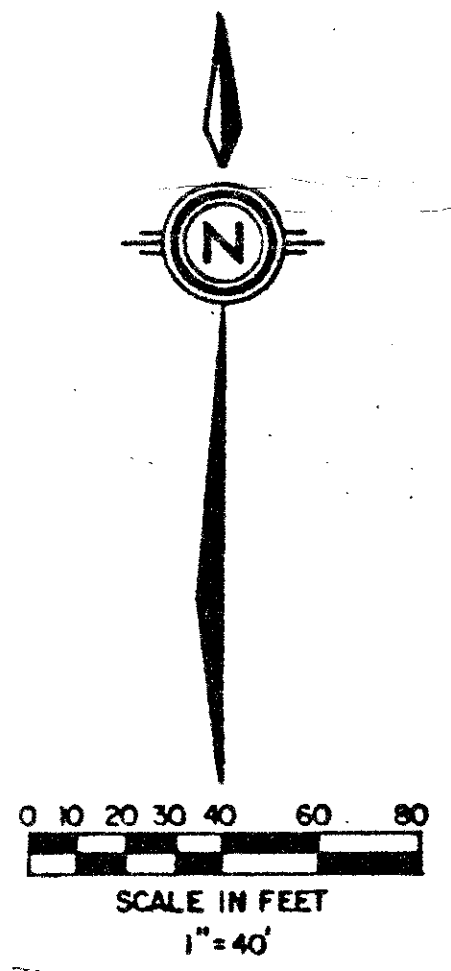
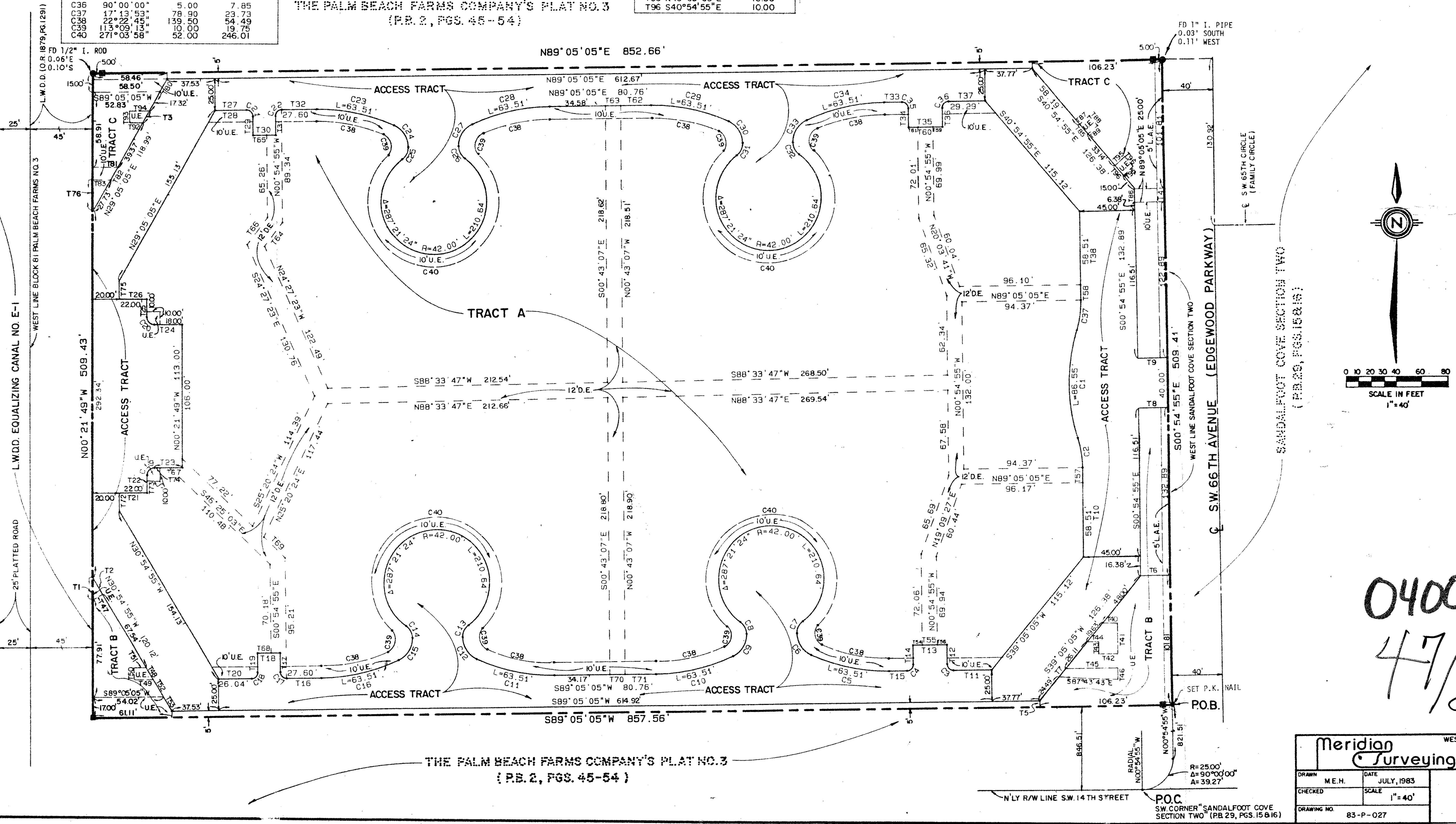
DECEMBER, 1983

SHEET 2 OF 2

STATE OF FLORIDA
COUNTY OF PALM BEACH
THIS PLAT WAS FILED FOR RECORD AT THIS DAY OF AD, 1983 AND DULY RECORDED IN PLAT BOOK ON PAGES AND
JOHN B. DUNKLE, CLERK
CIRCUIT COURT
BY: , D.C.

NO.	DELTA	RADIUS	LENGTH	NO.	BEARING	DISTANCE	NO.	BEARING	DISTANCE	NO.	BEARING	DISTANCE
C1	34°27'46"	143.90	86.55	T1	N00°21'49"W	14.13	T31	N00°54'55"W	15.00	T61	S89°05'05"W	7.50
C2	17°13'53"	78.90	23.73	T2	N30°54'55"E	12.16	T32	N89°05'05"E	27.60	T62	S89°05'05"W	34.17
C3	90°00'00"	5.00	7.85	T3	N29°05'05"E	11.55	T33	N89°05'05"E	14.17	T63	S89°05'05"W	23.00
C4	90°00'00"	5.00	7.85	T4	S00°54'55"E	10.00	T34	S00°54'55"E	15.00	T64	N36°38'35"E	12.86
C5	24°20'26"	149.50	63.51	T5	N00°54'55"W	5.00	T35	N89°05'05"E	27.00	T65	S89°05'05"W	11.00
C6	65°39'34"	18.91	21.67	T6	S89°05'05"W	25.00	T36	N00°54'55"W	15.00	T66	S36°38'35"E	26.86
C7	53°40'42"	11.96	11.21	T7	S39°05'05"W	8.14	T37	N89°05'05"E	29.29	T67	S89°38'11"E	7.97
C8	53°40'42"	11.96	11.21	T8	S89°05'05"W	25.00	T38	S00°54'55"E	70.51	T68	N89°05'05"E	11.00
C9	65°39'34"	18.91	21.67	T9	N89°05'05"E	25.00	T39	N89°05'05"E	5.00	T69	N46°25'03"W	23.29
C10	24°20'26"	149.50	63.51	T10	S00°54'55"E	70.51	T40	N89°05'05"E	12.46	T70	N89°05'05"E	12.00
C11	24°20'26"	149.50	63.51	T11	S89°05'05"W	30.41	T41	S00°54'55"E	25.04	T71	N89°05'05"E	34.58
C12	65°39'34"	18.91	21.67	T12	N00°54'55"W	15.00	T42	S89°05'05"W	15.08	T72	N00°21'49"W	14.51
C13	53°40'42"	11.96	11.21	T13	S89°05'05"W	27.00	T43	N00°54'55"W	10.00	T73	N00°21'49"W	10.00
C14	53°40'42"	11.96	11.21	T14	S00°54'55"E	15.00	T44	S89°05'05"W	10.00	T74	N89°38'11"E	4.00
C15	65°39'34"	18.91	21.67	T15	S89°05'05"W	14.18	T45	N89°05'05"E	41.87	T75	N00°21'49"W	14.08
C16	24°20'26"	149.50	63.51	T16	S89°05'05"W	27.60	T46	S00°54'55"E	8.86	T76	N00°21'49"W	24.14
C17	90°00'00"	5.00	7.85	T17	N00°54'55"W	15.00	T47	N59°05'05"E	7.18	T77	S89°38'11"E	5.00
C18	90°00'00"	5.00	7.85	T18	S89°05'05"W	18.00	T48	S30°54'55"E	11.55	T78	N89°38'11"E	5.00
C19	90°00'00"	5.00	9.42	T19	S00°54'55"E	15.00	T49	S89°05'05"W	15.77	T79	S00°21'49"E	5.00
C20	90°00'00"	5.00	9.42	T20	S89°05'05"W	26.04	T50	N00°54'55"W	10.00	T80	S29°05'05"W	11.55
C21	90°00'00"	5.00	7.85	T21	N89°38'11"E	22.00	T51	N89°05'05"E	10.00	T81	N89°38'11"E	19.27
C22	90°00'00"	5.00	7.85	T22	N00°21'49"W	14.00	T52	S30°54'55"E	15.01	T82	S29°05'05"W	11.48
C23	24°20'26"	149.50	63.51	T23	N89°38'11"E	22.00	T53	S30°54'55"E	13.86	T83	S89°38'11"E	13.63
C24	65°39'34"	18.91	21.67	T24	S89°38'11"W	14.00	T54	N89°05'05"E	7.50	T84	S29°05'05"W	20.34
C25	53°40'42"	11.96	11.21	T25	N00°21'49"W	14.00	T55	N89°05'05"E	12.00	T85	S40°54'55"E	10.00
C26	53°40'42"	11.96	11.21	T26	S89°38'11"W	22.00	T56	N89°05'05"E	7.50	T86	S00°54'55"E	10.00
C27	65°39'34"	18.91	21.67	T27	N89°05'05"E	24.91	T57	N00°54'55"W	12.00	T87	N49°05'05"E	10.00
C28	24°20'26"	149.50	63.51	T28	N89°05'05"E	24.91	T58	N00°54'55"W	12.00	T88	S40°54'55"E	10.00
C29	24°20'26"	149.50	63.51	T29	S00°54'55"E	15.00	T59	S89°05'05"W	7.50	T89	S49°05'05"E	10.00
C30	65°39'34"	18.91	21.67	T30	N89°05'05"E	18.00	T60	S89°05'05"W	12.00	T90	N89°05'05"E	5.00
C31	53°40'42"	11.96	11.21						T91	S89°05'05"W	5.00	
C32	53°40'42"	11.96	11.21						T92	S89°05'05"W	10.00	
C33	65°39'34"	18.91	21.67						T93	N00°54'55"W	10.00	
C34	24°20'26"	149.50	63.51						T94	N89°05'05"E	15.77	
C35	90°00'00"	5.00	7.85						T95	N49°05'05"E	10.00	
C36	90°00'00"	5.00	7.85						T96	S40°54'55"E	10.00	
C37	17°13'53"	78.90	23.73									
C38	22°20'45"	139.50	54.49									
C39	113°09'13"	10.00	19.75									
C40	271°05'58"	52.00	246.01									

THE PALM BEACH FARMS COMPANY'S PLAT NO. 3 (P.B. 2, PGS. 45-54)



0400-300
47/20

Meridian Surveying and mapping inc. WEST PALM BEACH, FLORIDA

DRAWN	M.E.H.	DATE	JULY, 1983
CHECKED		SCALE	1" = 40'
DRAWING NO.			83-P-027

AMENDED PLAT OF ROSEWOOD