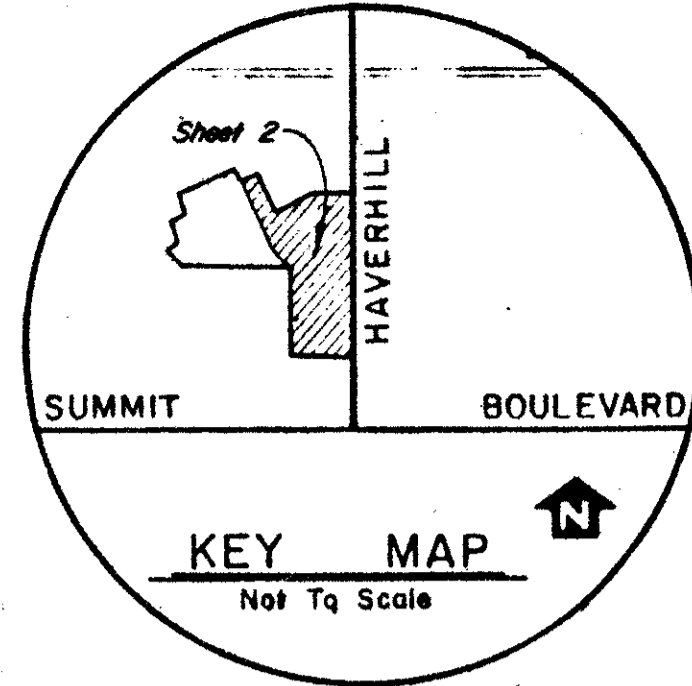


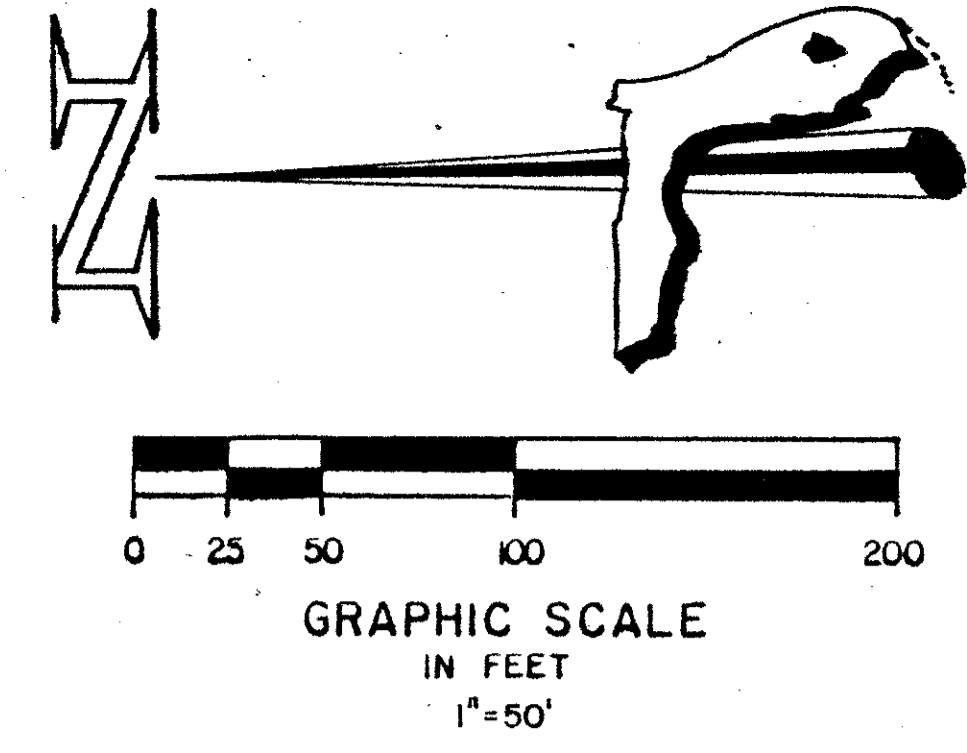
47/22



SOCIETY HILL

PLAT NO. 5 CANNONGATE (P.U.D.)

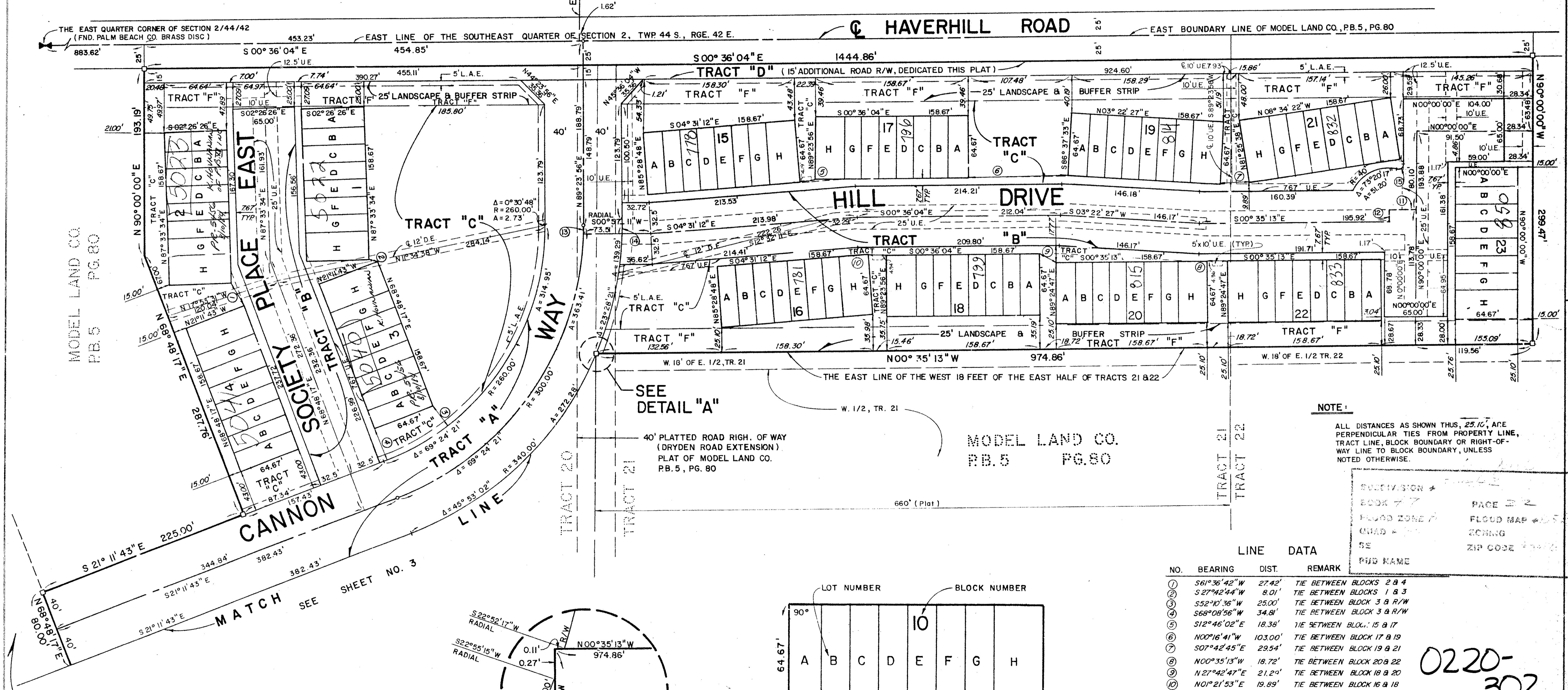
LYING IN SECTION 2, TOWNSHIP 44 SOUTH, RANGE 42 EAST
PALM BEACH COUNTY, FLORIDA
Sheet 2 of 3 September, 1983



22

PLAT TWO
DILLMAN HEIGHTS
RB. 27, PG. 65

REPLAT OF PLAT ONE
DILLMAN HEIGHTS
RB. 27 PG. 37



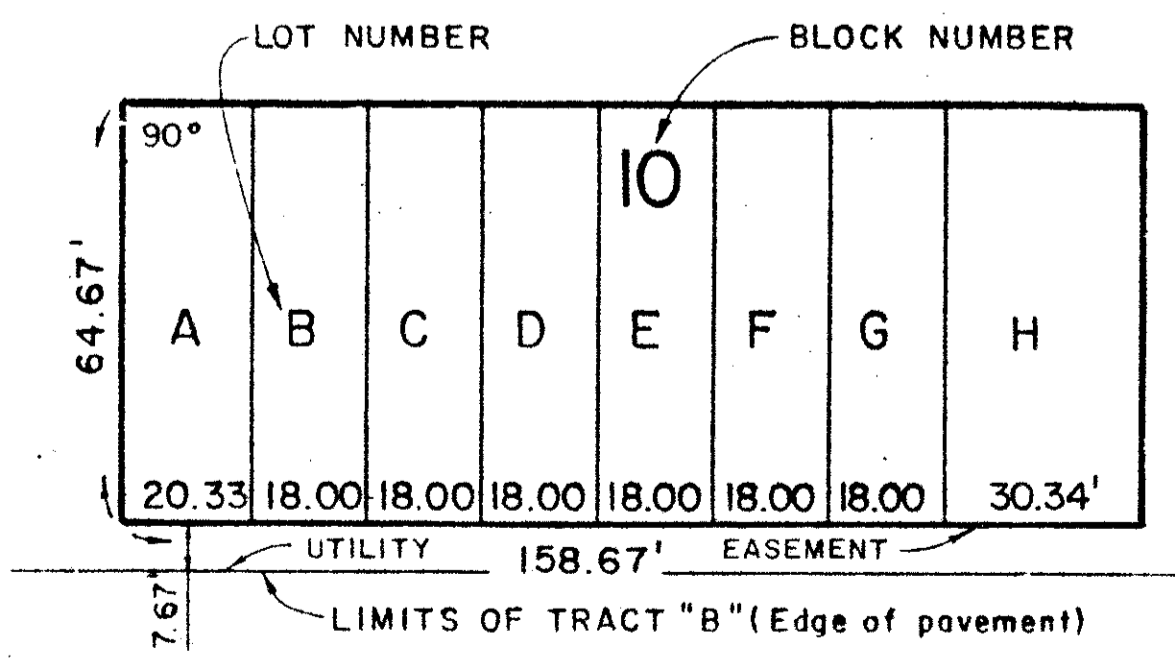
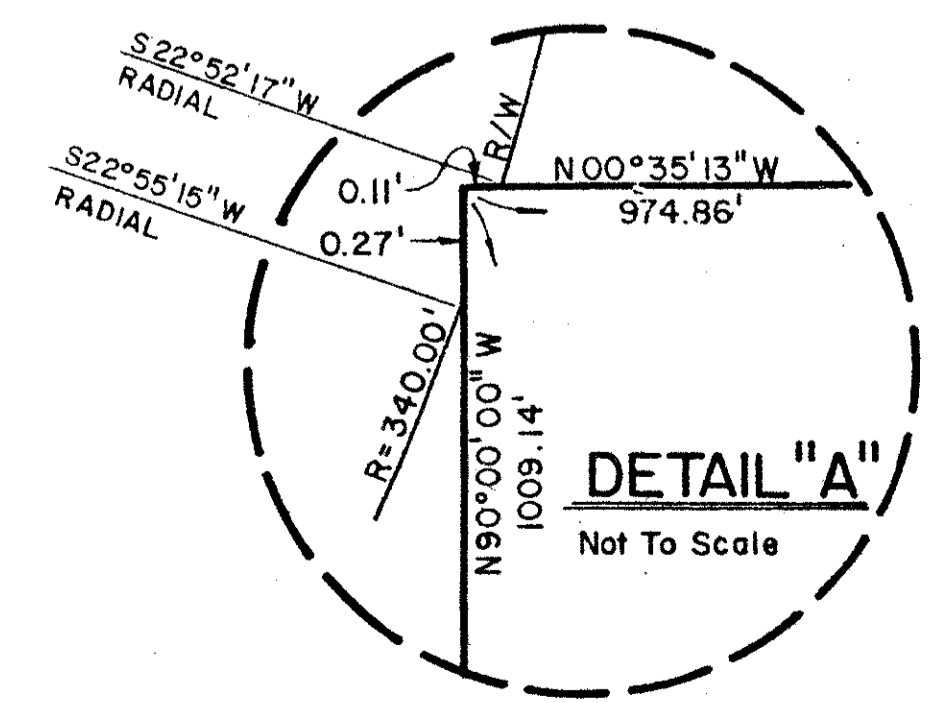
NOTE:
ALL DISTANCES AS SHOWN THUS, 25.15', ARE PERPENDICULAR TIES FROM PROPERTY LINE, TRACT LINE, BLOCK BOUNDARY OR RIGHT-OF-WAY LINE TO BLOCK BOUNDARY, UNLESS NOTED OTHERWISE.

SUBDIVISION	47-22
BOOK	77
PAGE	2
PLAT	NO. 5
QUAD	17
SECTION	2
TOWNSHIP	44 S.
RANGE	42 E.
COUNTY	PALM BEACH
STATE	FLORIDA

NO.	BEARING	DIST.	REMARK
1	S61°36'42"W	27.42'	TIE BETWEEN BLOCKS 2 & 4
2	S27°42'44"W	8.01'	TIE BETWEEN BLOCKS 1 & 3
3	S52°10'36"W	25.00'	TIE BETWEEN BLOCK 3 & R/W
4	S68°08'56"W	34.81'	TIE BETWEEN BLOCK 3 & R/W
5	S12°46'02"E	18.36'	TIE BETWEEN BLOCKS 15 & 17
6	N00°16'41"W	103.00'	TIE BETWEEN BLOCK 17 & 19
7	S07°42'45"E	29.54'	TIE BETWEEN BLOCK 19 & 21
8	N00°35'13"W	18.72'	TIE BETWEEN BLOCK 20 & 22
9	N27°42'47"E	21.20'	TIE BETWEEN BLOCK 18 & 20
10	N01°21'53"E	19.89'	TIE BETWEEN BLOCK 16 & 18
11	N00°00'00"E	27.50'	ROADWAY @ TO RADIUS POINT
12	N90°00'00"E	12.45'	ROADWAY @ TO RADIUS POINT
13	Δ=0°33'15"	8.14'	TIE BETWEEN @ P.C., CANNON WAY, @ ROADWAY @, TRACT "E",
14	Δ=0°33'15"	9.22'	TIE BETWEEN R/W @, CANNON WAY, @ ROADWAY @, TRACT "E",
15	Δ=102°50'23"	8.97'	CURVE DATA, 5.00' RADIUS CURVE

0220-302

REPLAT BLOCKS 1 THRU 6
NO. 2 CANNONGATE
RB. 56, PGS. 173-175



ALL AREAS OTHER THAN HOUSING BLOCKS, TRACTS A, B & D ARE INTENDED TO BE OPEN AREAS, TRACT "C"

47/22

FLORIDA SURVEYING & MAPPING, INC.
REGISTERED LAND SURVEYORS
WEST PALM BEACH, FLORIDA 33406

SCALE	1" = 50'
DATE	JUNE '83
BY	RDJ
NO.	2497

SOCIETY HILL 1.83-66-D01
Sheet 2 of 3