

47/25

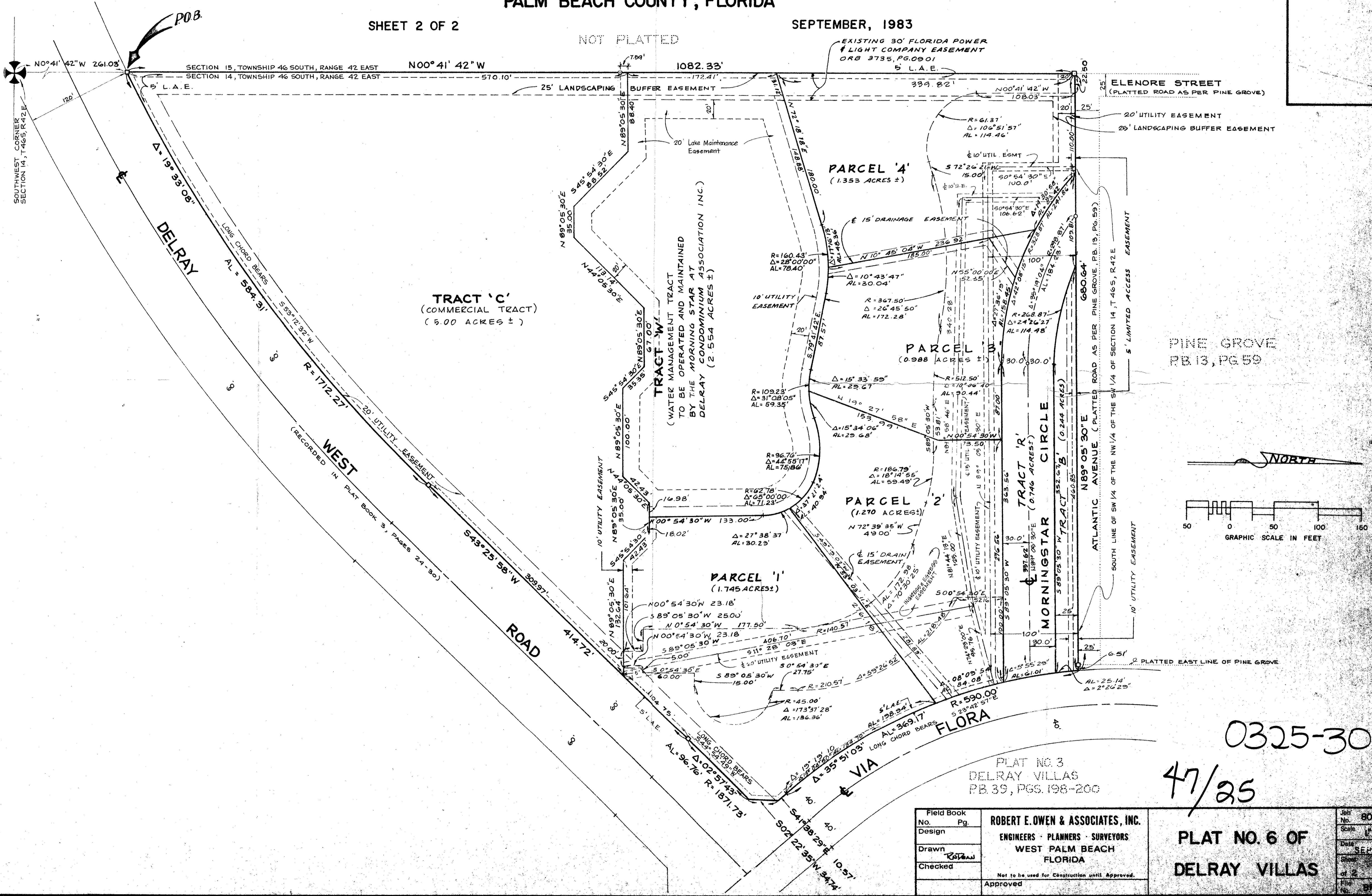
25

A PLANNED UNIT DEVELOPMENT IN VILADELRAY WEST PLAT NO. 6 OF DELRAY VILLAS

BEING A SUBDIVISION OF LAND IN THE SOUTHWEST QUARTER (SW 1/4) OF
SECTION 14, TOWNSHIP 46 SOUTH, RANGE 42 EAST
PALM BEACH COUNTY, FLORIDA

SHEET 2 OF 2

SEPTEMBER, 1983



Field Book No. Pg.
 Design
 Drawn
 Checked

ROBERT E. OWEN & ASSOCIATES, INC.
 ENGINEERS - PLANNERS - SURVEYORS
 WEST PALM BEACH
 FLORIDA

Not to be used for Construction until Approved.
 Approved

0325-302
 47/25

**PLAT NO. 6 OF
 DELRAY VILLAS**

Job No. 80-1063
 Scale 1" = 50'
 Date SEPT 1983
 Sheet 2 of 2
 File No. 87-2110