

47/47

GEORGIAN COURTS AT WELLINGTON - P. U. D.

47

being a replat of part of PARCEL "A" of PINWOOD GROVE OF WELLINGTON - P. U. D., recorded in Plat Book 40, Pages 37 thru 40, inclusive, Public Records of Palm Beach County, Florida
IN PART OF SECTION 4, TOWNSHIP 44 SOUTH, RANGE 41 EAST
PALM BEACH COUNTY, FLORIDA
IN 2 SHEETS SHEET NO. 2

GEE & JENSON
ENGINEERS - ARCHITECTS - PLANNERS INC.
WEST PALM BEACH, FLORIDA
JUNE 1983
SCALE IN FEET Scale: 1" = 40'

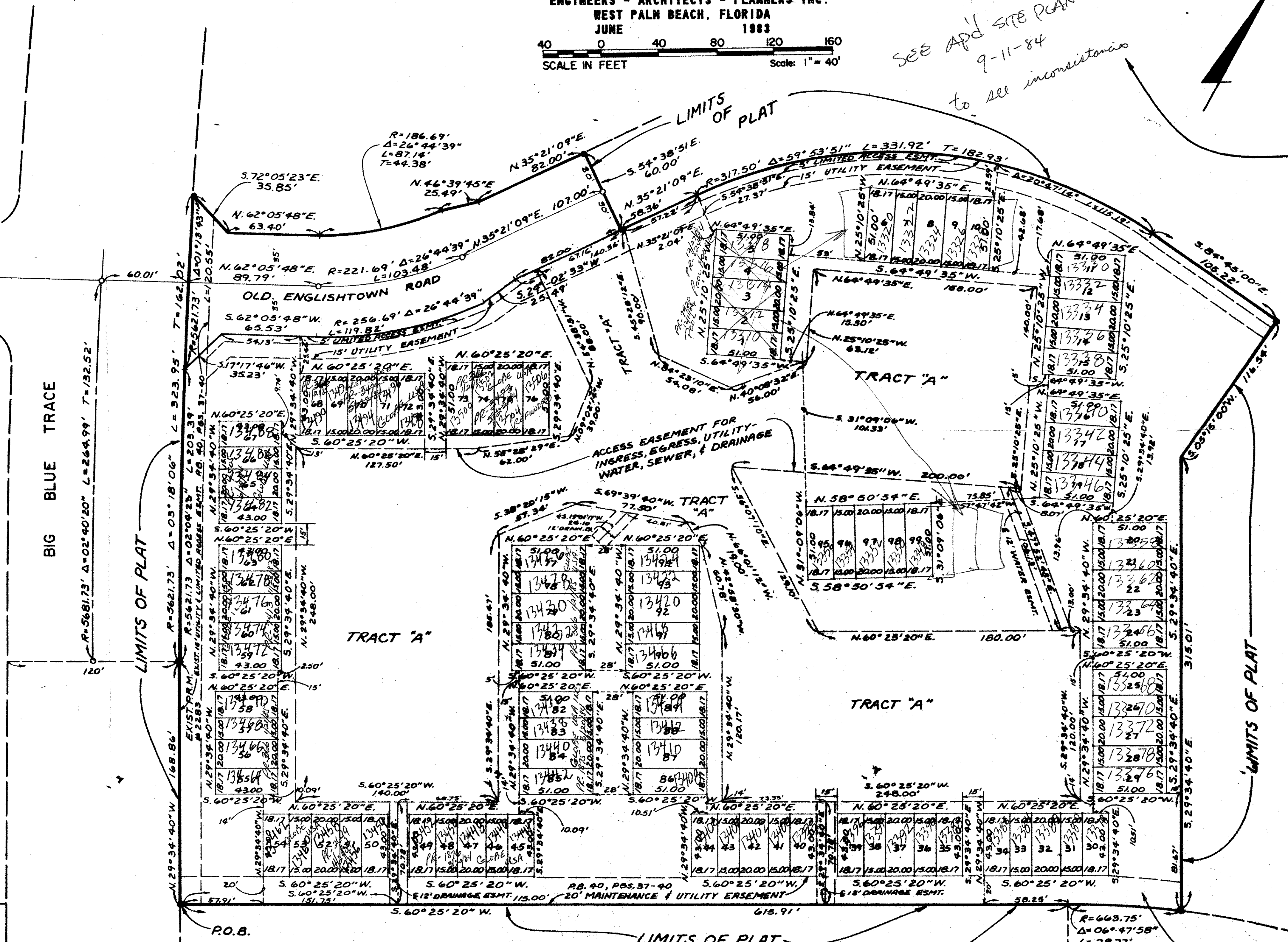
SEE APD SITE PLAN
9-11-84
to all inconsistencies

STATE OF FLORIDA
COUNTY OF PALM BEACH
This plat was filed for record at _____ day of _____ 1984, and duly recorded in Plat Book No. _____ on Page _____
JOHN B. DUNKLE
Clerk Circuit Court
By: _____ D.C.

SUGAR POND MANOR OF WELLINGTON--P.U.D.
PB. 30, PGS. 20 THRU 32, INCL.

BIG BLUE TRACE

PARCEL "A"
PINWOOD GROVE OF WELLINGTON--P.U.D.
PB. 40--PGS. 37-40 INCL.



PINEWOOD GROVE OF WELLINGTON--P.U.D.
ACME IMPROVEMENT DISTRICT C-12
PB. 40 PGS. 37 THRU 40, INCL. SHT. NO. 3

CHURCH SITE NO. 7 OF WELLINGTON--P.U.D.
PB. 38, PG. 109

SHEFFIELD WOODS--
UNIT NO. 1 OF WELLINGTON--P.U.D.
PB. 40--PGS. 120 & 121

| | |
|-------------|-------|
| SUBDIVISION | _____ |
| BOOK | _____ |
| FLOOD ZONE | _____ |
| QUAD | _____ |
| SE | _____ |
| PUD NAME | _____ |
| PAGE | 47 |
| FLOOD MAP | _____ |
| ZONING | _____ |
| ZIP CODE | _____ |

0332-353

47/47