

47/52

# JONATHAN'S LANDING PLAT SEVEN P.U.D.

Being a Replat of part of PLAT FOUR of JONATHAN'S LANDING P.U.D. as recorded  
in P.B. 41, Pgs. 183, 184 and 185, Public Records of Palm Beach County, Florida

### IN PART OF SECTION 7, TWP. 41 S., RGE. 43E. PALM BEACH COUNTY, FLORIDA

IN 2 SHEETS SHEET NO. 2

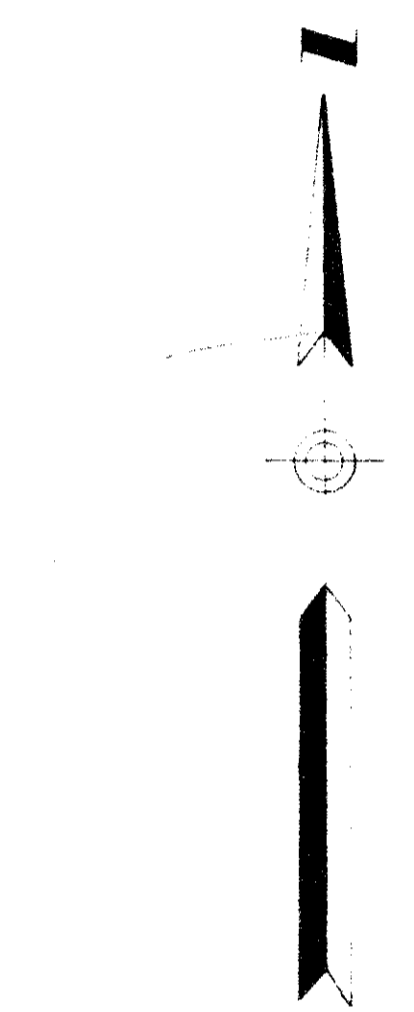
GEE & JENSON  
ENGINEERS ARCHITECTS PLANNERS, INC.  
WEST PALM BEACH, FLORIDA  
JANUARY 1983



STATE OF FLORIDA  
COUNTY OF PALM BEACH  
This Plat was filed for record on \_\_\_\_\_  
this \_\_\_\_\_ day of \_\_\_\_\_, 1983,  
and duly recorded in Plat Book No. \_\_\_\_\_  
on page \_\_\_\_\_  
JOHN B. DUNKLE, Clerk Circuit Court  
By \_\_\_\_\_

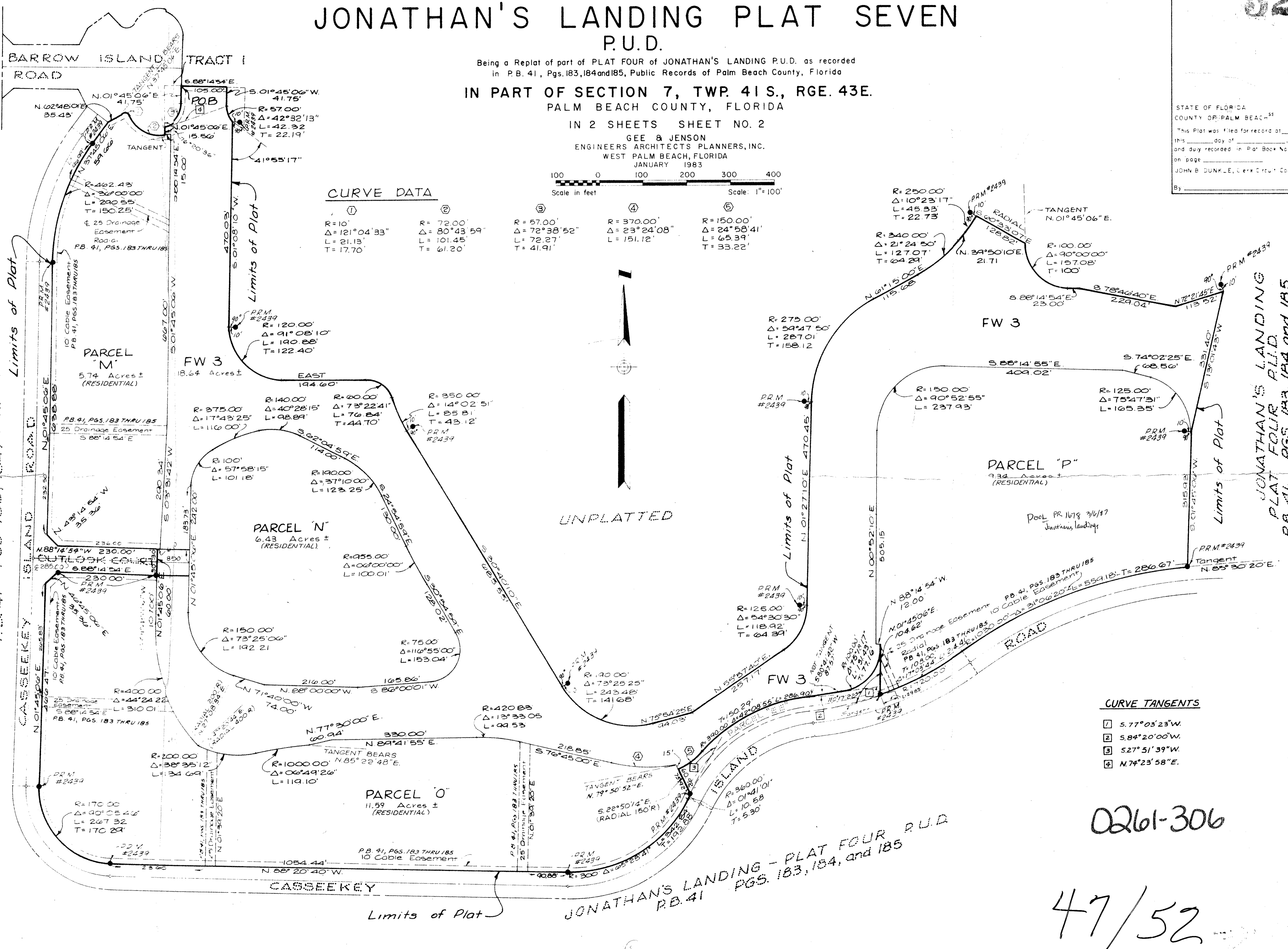
### CURVE DATA

①	②	③	④	⑤
R = 10' Δ = 121°04'33" L = 21.13' T = 17.70'	R = 72.00' Δ = 80°43'59" L = 101.45' T = 61.20'	R = 57.00' Δ = 72°38'52" L = 72.27' T = 41.91'	R = 370.00' Δ = 23°24'08" L = 151.12'	R = 150.00' Δ = 24°58'41" L = 65.39' T = 33.22'



JONATHAN'S LANDING - PLAT FOUR P.U.D.  
P.B. 41 PGS. 183, 184, and 185

JONATHAN'S LANDING  
PLAT FOUR P.U.D.  
P.B. 41 PGS. 183, 184, and 185



### CURVE TANGENTS

①	5.77°03'23"W
②	5.84°20'00"W
③	5.27°51'39"W
④	N.74°23'58"E

0261-306

47/52