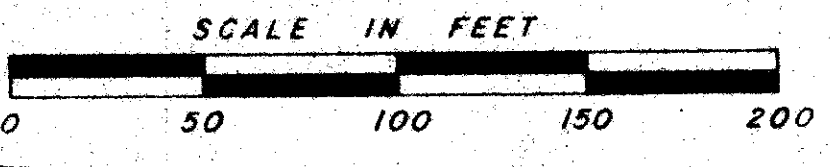
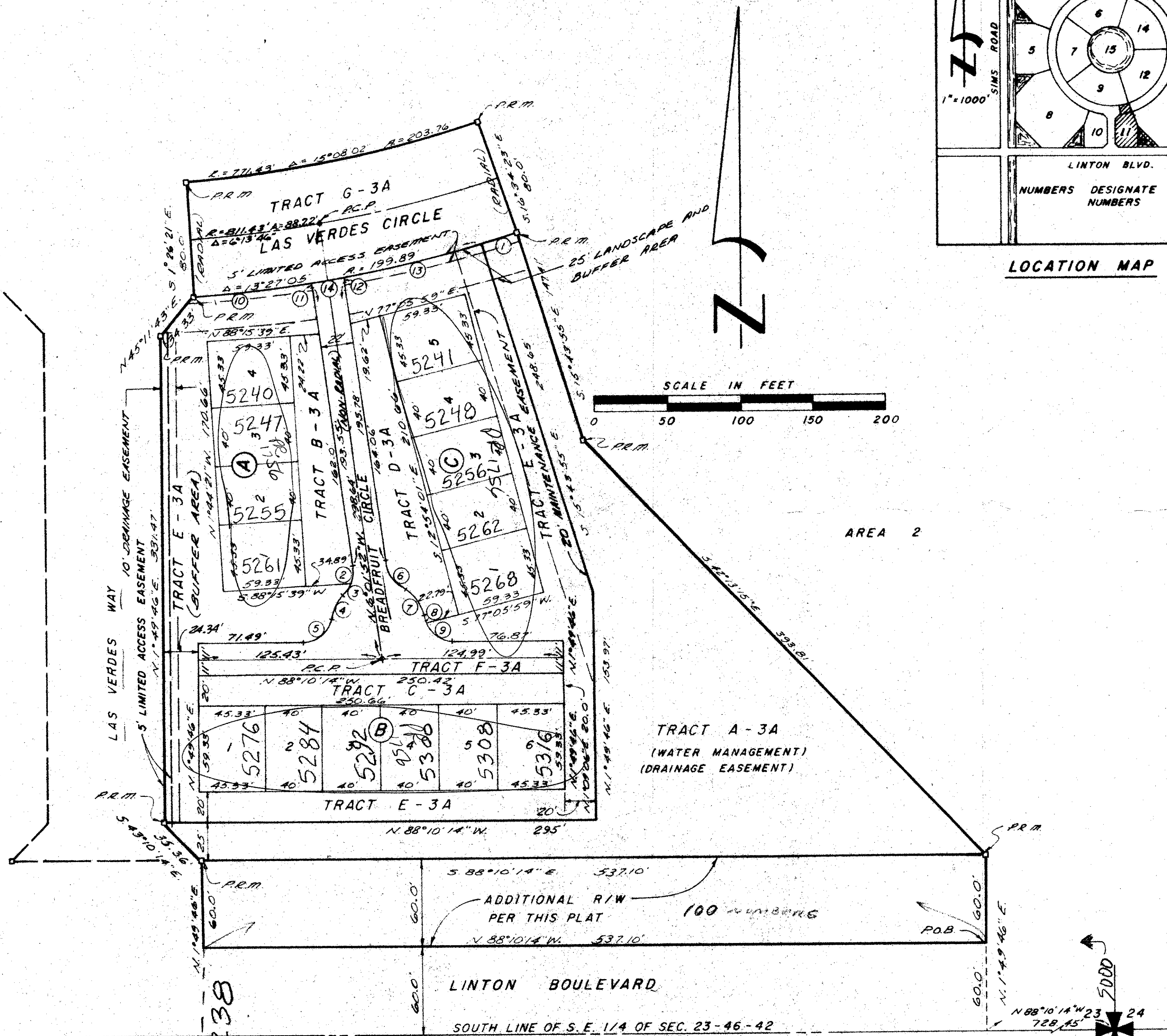
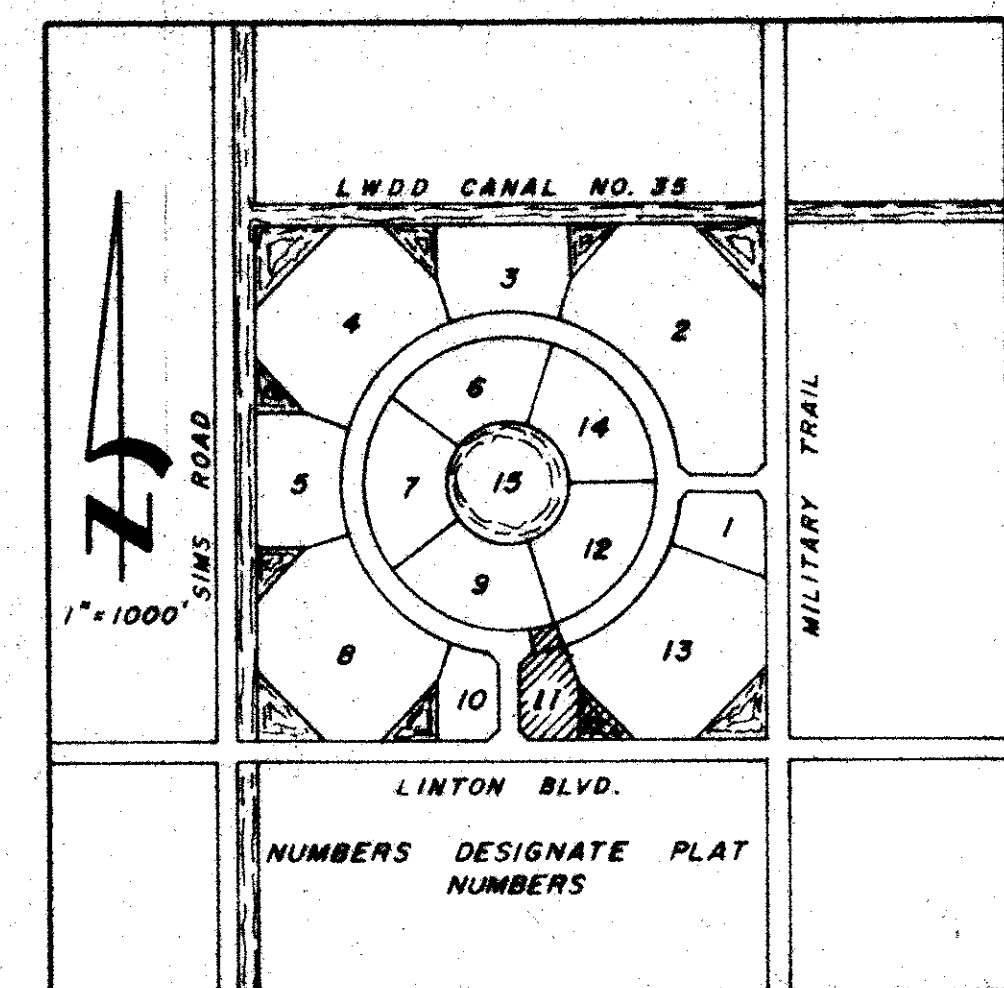


47/57

# PART OF A PLANNED UNIT DEVELOPMENT KINGS POINT PLAT NO. ELEVEN

A PART OF THE S.E. 1/4 OF SECTION 23  
TOWNSHIP 46 SOUTH, RANGE 42 EAST  
PALM BEACH COUNTY, FLORIDA



CURVE NO.	RADIUS	Δ	ARC
1	851.432	1°40'57"	25.00'
2	20'	26°41'03"	5.32'
3	20'	26°43'15"	5.33'
4	32'	34°27'25"	12.24'
5	20'	78°54'45"	27.54'
6	20'	53°24'18"	14.64'
7	32'	50°10'41"	23.02'
8	20'	16°10'11"	5.64'
9	20'	62°44'34"	21.90'
10	851.432	5°24'29"	80.37'
11	30'	3°37'56"	1.90'
12	30'	0°30'51"	0.27'
13	851.432	6°33'29"	97.43'
14	851.432	1°29'07"	22.07'

Subdivision # 02/46/42  
 BOOK 47 PAGE 57  
 FLOOD ZONE F FLOOD MAP #2000  
 QUAD # 37 ZONING  
 SE ZIP CODE 33405  
 PUD NAME

## 0263-008

PREPARED BY:  
 E. BRETT CULPEPPER  
 C F S and ASSOCIATES, INC.  
 CONSULTING ENGINEERS  
 FT. PIERCE, FLORIDA

47/59