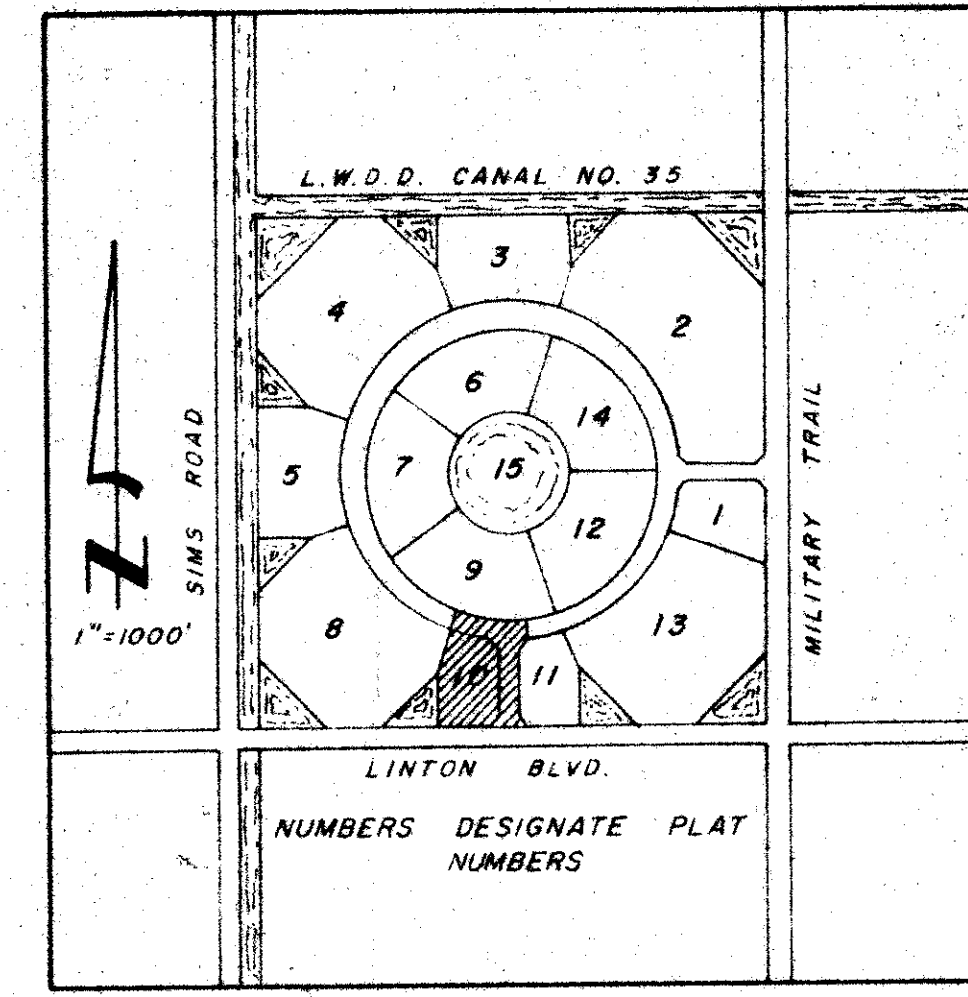


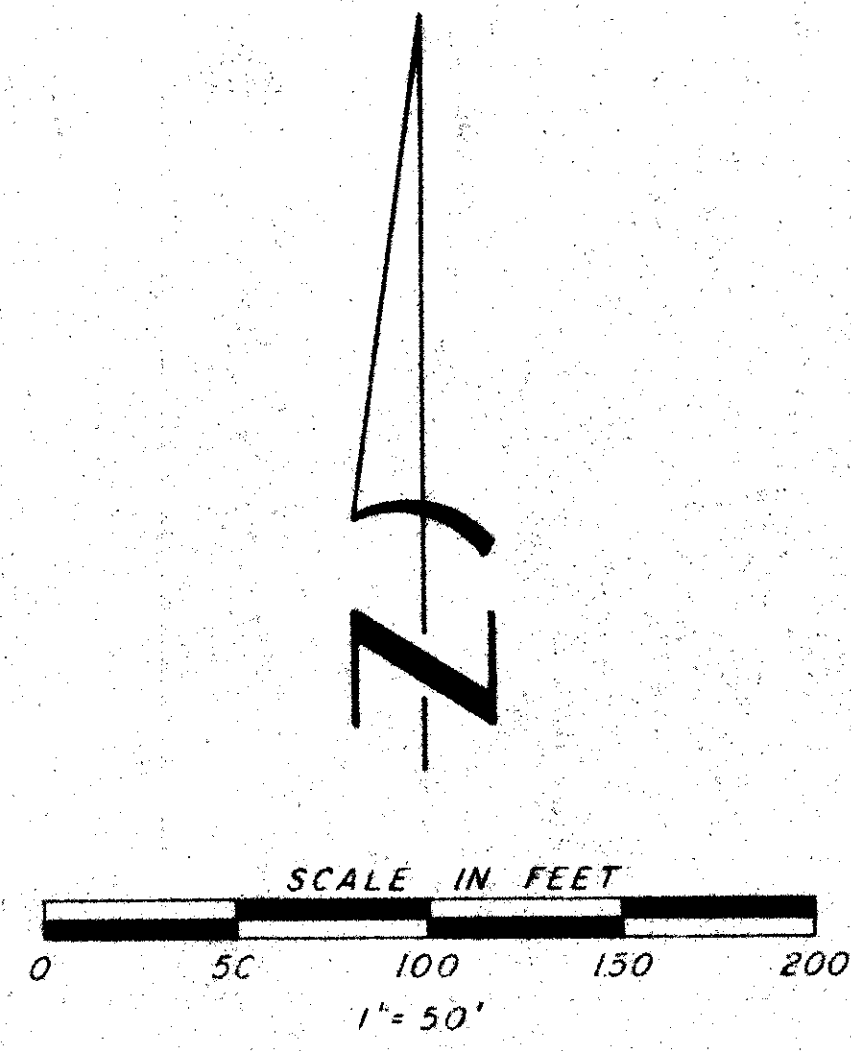
47/59

PART OF A PLANNED UNIT DEVELOPMENT KINGS POINT PLAT NO. TEN

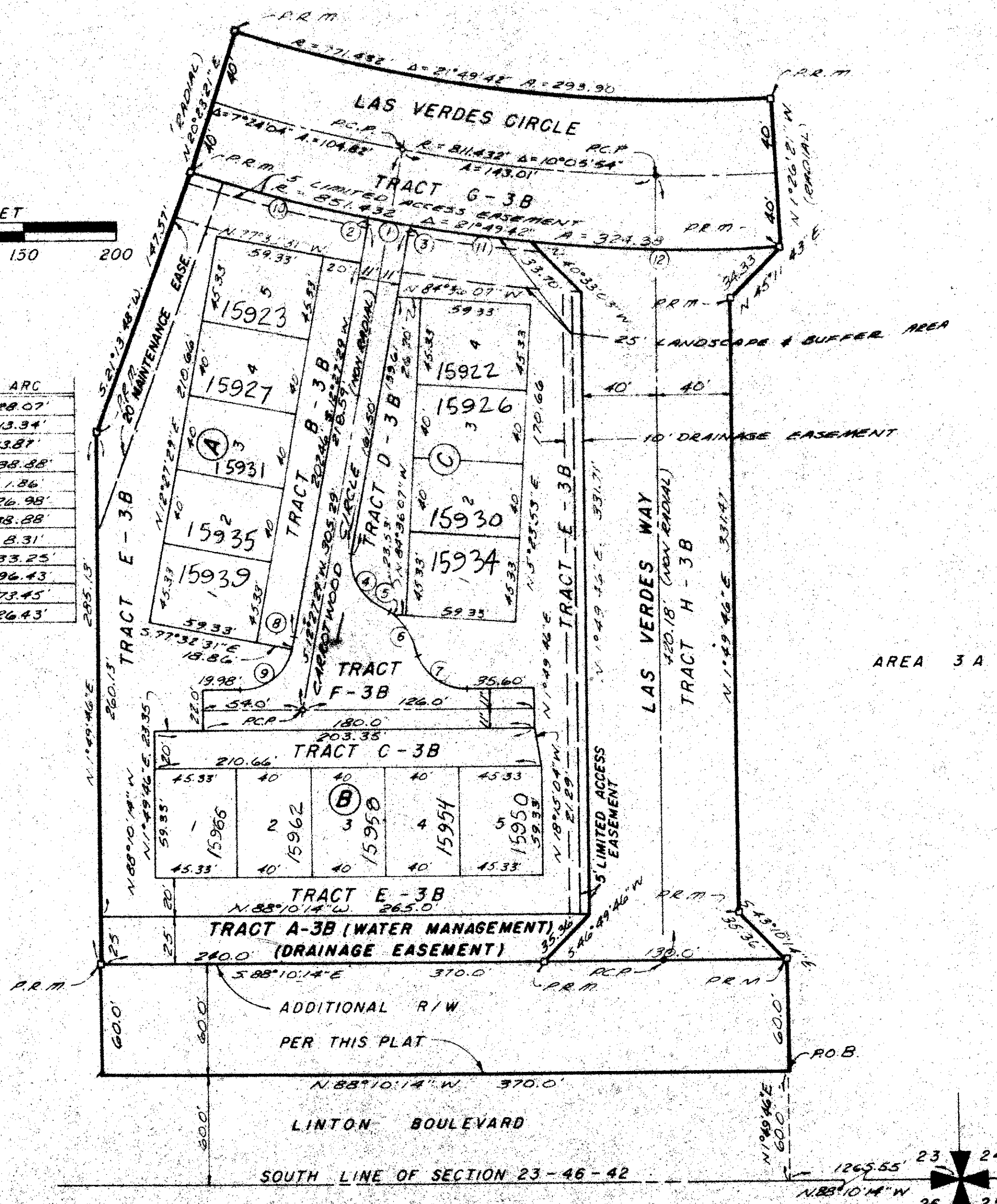
A PART OF THE S.E. 1/4 OF SECTION 23
TOWNSHIP 46 SOUTH, RANGE 42 EAST
PALM BEACH COUNTY, FLORIDA



LOCATION MAP



CURVE NO.	RADIUS	Δ	ARC
1	851.432	1°53'20"	28.07'
2	30	25°29'11"	13.34'
3	30	26°28'55"	13.87'
4	30	74°15'26"	38.48'
5	34.50	3°05'09"	1.86'
6	34.50	44°48'01"	26.98'
7	30	74°15'26"	38.88'
8	30	15°51'53"	8.31'
9	30	63°30'24"	33.25'
10	851.432	6°29'21"	96.43'
11	851.432	4°56'33"	73.45'
12	851.432	8°30'28"	126.43'



Kings Point 10

SUBDIVISION #	23/46/42
BOOK	92
PAGE	59
FLOOD ZONE	B
FLOOD MAP #	308
QUAD #	37
ZONING	SE
BE	ZIP CODE 33445
PUD NAME	

PREPARED BY:
E. BRETT CULPEPPER
C F S and ASSOCIATES, INC.
CONSULTING ENGINEERS
FT. PIERCE, FLORIDA

0263-007

47/59