

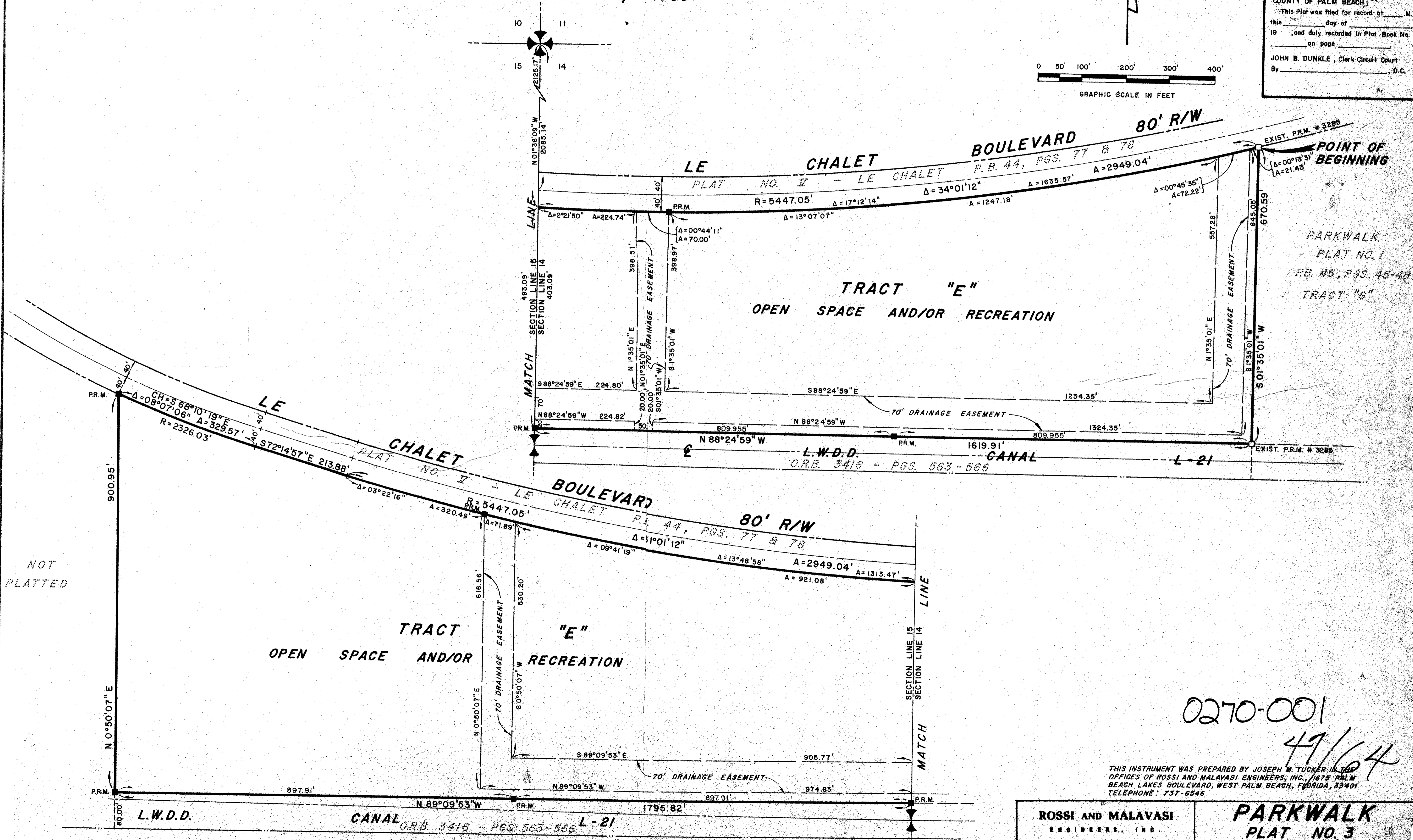
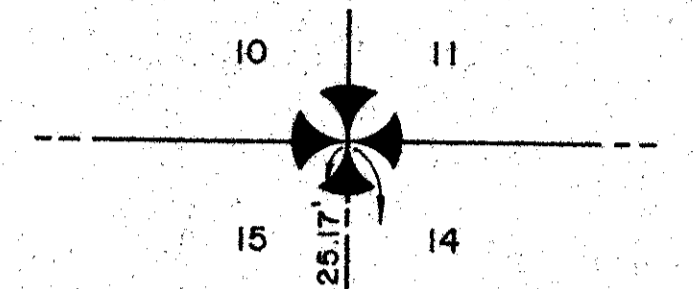
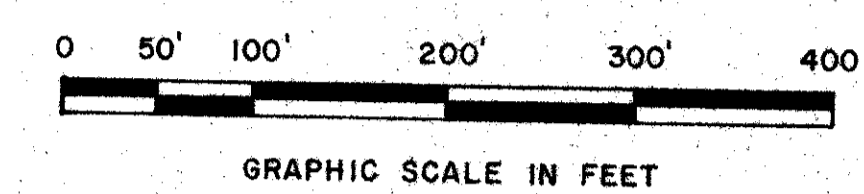
47/64

PARKWALK - PLAT NO. 3

BEING THE EIGHTH PLAT OF LE CHALET (P.U.D.)
SECTIONS 14 & 15, TOWNSHIP 45 SOUTH, RANGE 42 EAST
PALM BEACH COUNTY, FLORIDA
AUGUST, 1983

64

STATE OF FLORIDA
COUNTY OF PALM BEACH
This Plat was filed for record at _____ M.
this _____ day of _____
19 _____, and duly recorded in Plat Book No. _____
on page _____
JOHN B. DUNKLE, Clerk Circuit Court
By _____, D.C.



NOT PLATTED

0270-001
47/64

THIS INSTRUMENT WAS PREPARED BY JOSEPH M. TUCKER IN THE OFFICES OF ROSSI AND MALAVASI ENGINEERS, INC., 1675 PALM BEACH LAKES BOULEVARD, WEST PALM BEACH, FLORIDA, 33401 TELEPHONE: 737-6546

ROSSI AND MALAVASI ENGINEERS, INC. WEST PALM BEACH, FLORIDA		PARKWALK PLAT NO. 3 IN 3 SHEETS SHEET NO. 3	
Date: AUGUST, 1983	Designed: R. ANDERSON	Scale: 1" = 100'	Sheet: 3 of 3
Approved:	Drawn: J. McELROY	Job No.: #217-83	
	Checked:	File No.: S-1291-00	