

47/79

P.O.B. SOUTHWEST CORNER TRACT "O"

ORIOLE COUNTRY ROAD (80' R/W) (P.B. 42, PG. 102) N01°12'58"W 871.60'

# PLAT OF COUNTRY LANDING SECTION ONE

PART OF "LOGGERS' RUN, A P.U.D." LYING IN SECTION 23, TOWNSHIP 47 SOUTH, RANGE 41 EAST, PALM BEACH COUNTY, FLORIDA, BEING A REPLAT OF TRACT "O" AND A PORTION OF TRACT "P", "BOUNDARY PLAT OF ORIOLE COUNTRY" AS RECORDED IN PLAT BOOK 32, AT PAGES 175 THROUGH 180 OF THE PUBLIC RECORDS OF PALM BEACH COUNTY, FLORIDA.

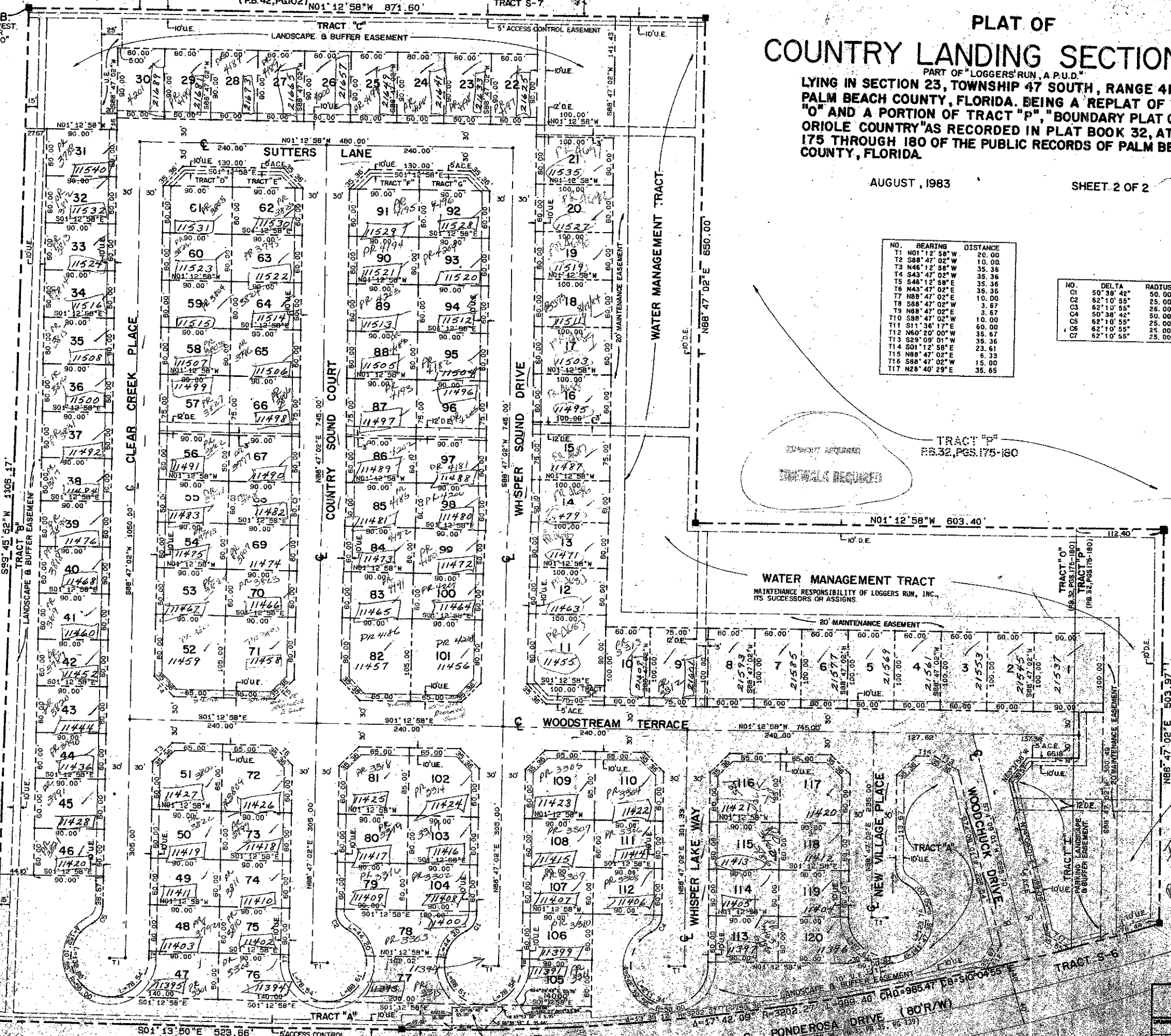
79

AUGUST, 1983

SHEET 2 OF 2

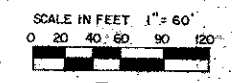
STATE OF FLORIDA COUNTY OF PALM BEACH THIS PLAT WAS FILED FOR RECORD AT THIS DAY OF AUGUST, 1983 AND ONLY RECORDED IN PLAT BOOK ON PAGES AND JOHN B. DUNKLE, CLERK CIRCUIT COURT BY: D.C.

FRUIT LAMES COMPANY'S SUBDIVISION NO. 2 (P.B. 1, PG. 102)



NO.	BEARING	DISTANCE
T1	N01°12'58"W	20.00
T2	S88°47'02"E	10.00
T3	N43°12'58"W	35.36
T4	S43°47'02"E	35.36
T5	S48°12'58"E	35.36
T6	N43°47'02"E	35.36
T7	N88°47'02"E	10.00
T8	S88°47'02"E	3.87
T9	N88°47'02"E	3.87
T10	S88°47'02"W	10.00
T11	S11°36'17"E	60.00
T12	N60°20'00"W	35.87
T13	S29°09'01"W	35.36
T14	S01°12'58"E	23.61
T15	N88°47'02"E	6.33
T16	S88°47'02"E	15.00
T17	N28°40'29"E	35.85

NO.	DELTA	RADIUS	LENGTH
C1	50°38'42"	50.00	44.20
C2	62°10'55"	25.00	27.13
C3	62°10'55"	25.00	27.13
C4	62°10'55"	25.00	27.13
C5	62°10'55"	25.00	27.13
C6	62°10'55"	25.00	27.13
C7	62°10'55"	25.00	27.13



AREA TABLE

PARCEL - LOTS	SQ. FT.
22-25, 28-30, 32-34, 36-38, 40-42, 44-46, 48-50, 52-54, 56-58, 60-62, 64-66, 68-70, 72-74, 76-78, 80-82, 84-86, 88-90, 92-94, 96-98, 100-102, 104-106, 108-110, 112-114, 116-118, 120	5400.0
47, 76, 105	5926.5
2-8, 10, 12-14, 16-21	8209.9
120	6750.0
57, 66, 67, 96	7073.7
77	2337.5
51, 72, 81, 102, 109, 110, 116, 117	7500.0
9, 15	8863.4
78	9000.0
1, 11	9137.8
52, 71, 82, 101	9137.8
<b>TOTAL LOTS - 772,712.6</b>	
PARCEL - TRACTS	SQ. FT.
A	88051.0
B	34456.8
C	60111.3
D	1387.5
E	1937.5
F	1332.5
G	1337.5
H	2887.5
I	24083.9
J	26356.8
<b>TOTAL TRACTS - 427,756.8</b>	
PARCEL - ROADS	SQ. FT.
	35925.7
<b>TOTAL SP. FT. SECTION ONE - 499,685.0</b>	

P.U.D. DATA

BUILDING	ACRES	% GROSS
BUILDING	5.7	16.6
PAVEMENT	5.0	14.5
OPEN	20.1	58.4
RESIDENTIAL LAKE	3.6	10.5
<b>TOTAL (PLATTED)</b>	<b>34.4</b>	<b>100.0</b>

SEE BACK  
Im part the have  
RE PUD  
AD 1  
Site app'd 4/21/83  
0275-309  
120 DWELLING UNITS  
SINGLE FAMILY DETACHED  
DENSITY = 3.5 DU/AC

Meridian Surveying and Mapping Inc. WEST PALM BEACH, FLORIDA  
DATE: 8/1/83  
DRAWN: [Signature]  
CHECKED: [Signature]  
PLAT OF: COUNTRY LANDING SECTION ONE