

47/89

NOTES

- NO BUILDINGS OR ANY KIND OF CONSTRUCTION SHALL BE PLACED ON UTILITY OR DRAINAGE EASEMENTS.
- NO STRUCTURES, TREES OR SHRUBS SHALL BE PLACED ON DRAINAGE EASEMENTS.
- APPROVAL OF LANDSCAPING ON UTILITY EASEMENTS OTHER THAN WATER OR SEWER SHALL BE ONLY WITH APPROVAL OF ALL UTILITIES OCCUPYING SAME.
- U.E. DENOTES UTILITY EASEMENT  
D.E. DENOTES DRAINAGE EASEMENT  
I. & E., U. & D.E. DENOTES INGRESS AND EGRESS, UTILITY AND DRAINAGE EASEMENT
- PERMANENT REFERENCE MONUMENTS ARE SHOWN THUS:  $\square$   
PERMANENT CONTROL POINTS ARE SHOWN THUS:  $\circ$
- EASEMENTS ARE FOR PUBLIC UTILITIES, UNLESS OTHERWISE NOTED.
- BEARINGS AS SHOWN HEREON ARE BASED ON THE NORTH LINE OF THE SOUTH-EAST QUARTER OF SECTION 12, TOWNSHIP 45 SOUTH, RANGE 42 EAST, PALM BEACH COUNTY, FLORIDA, BEING AN ASSUMED BEARING OF NORTH 89° 56' 35" WEST AND ALL OTHER BEARINGS ARE RELATIVE THERETO.
- IN INSTANCES WHERE DRAINAGE AND UTILITY EASEMENTS INTERSECT, THE AREAS WITHIN THE INTERSECTION ARE DRAINAGE AND UTILITY EASEMENTS. CONSTRUCTION AND MAINTENANCE OF UTILITY FACILITIES SHALL NOT INTERFERE WITH THE DRAINAGE FACILITIES WITHIN THESE AREAS.

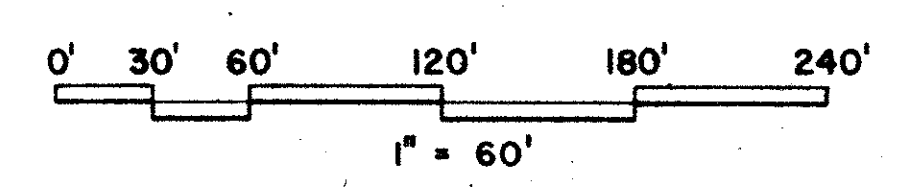
PLAT NO. 2  
**MANOR FOREST**  
 A P.U.D.

SEPTEMBER 1983

SHEET 2 OF 2

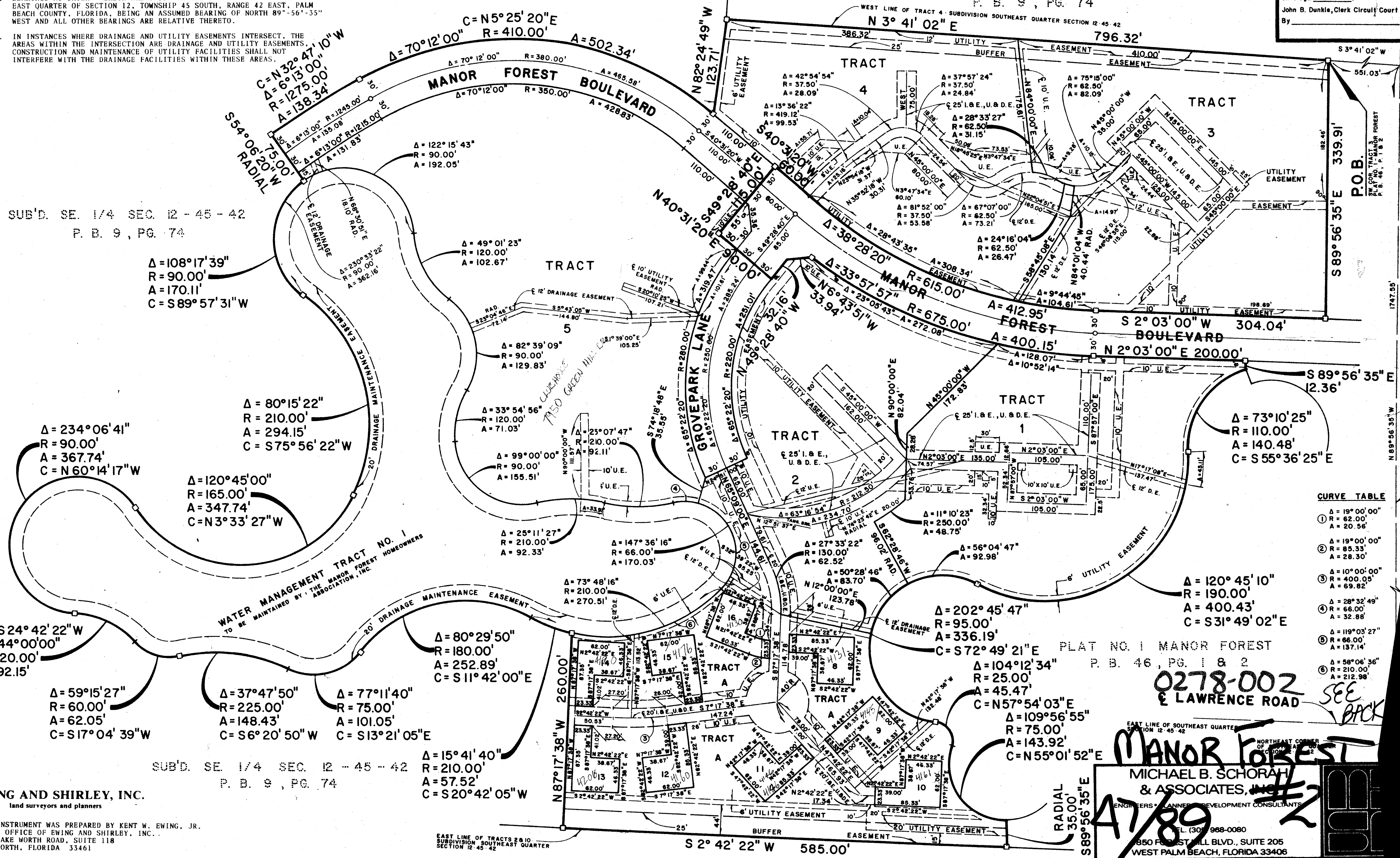
BOOK 47 PAGE 89  
 FLOOD ZONE  
 QUAD # 34  
 SS RUP  
 PUD NAME MANOR FOREST

89



STATE OF FLORIDA  
 COUNTY OF PALM BEACH  
 This Plat was filed for record at  
 M. this day of 19  
 and duly recorded in Plat Book No.  
 on Page  
 John B. Dunkle, Clerk Circuit Court  
 By \_\_\_\_\_ D.C.

SUB'D. SE. 1/4 SEC. 12 - 45 - 42  
 P. B. 9, PG. 74



**CURVE TABLE**

1	$\Delta = 19^\circ 00' 00''$ R = 62.00' A = 20.56'
2	$\Delta = 19^\circ 00' 00''$ R = 85.33' A = 28.30'
3	$\Delta = 10^\circ 00' 00''$ R = 400.00' A = 69.82'
4	$\Delta = 28^\circ 32' 49''$ R = 66.00' A = 32.88'
5	$\Delta = 119^\circ 03' 27''$ R = 66.00' A = 157.14'
6	$\Delta = 58^\circ 06' 36''$ R = 210.00' A = 212.98'

PLAT NO. 1 MANOR FOREST  
 P. B. 46, PG. 1 & 2  
**0278-002**  
 LAWRENCE ROAD  
**MANOR FOREST**  
 MICHAEL B. SCHORAH  
 & ASSOCIATES, INC.  
 ENGINEERS, PLANNERS, DEVELOPMENT CONSULTANTS  
 TEL. (305) 968-0080  
 850 FOREST HILL BLVD., SUITE 205  
 WEST PALM BEACH, FLORIDA 33406

**EWING AND SHIRLEY, INC.**  
 land surveyors and planners

THIS INSTRUMENT WAS PREPARED BY KENT W. EWING, JR.  
 IN THE OFFICE OF EWING AND SHIRLEY, INC.,  
 3767 LAKE WORTH ROAD, SUITE 118  
 LAKE WORTH, FLORIDA 33461

EAST LINE OF TRACTS 2 & 10  
 SUBDIVISION SOUTHEAST QUARTER  
 SECTION 12 - 45 - 42