

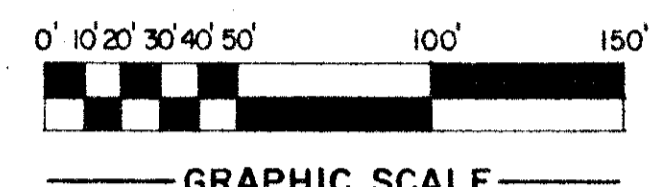
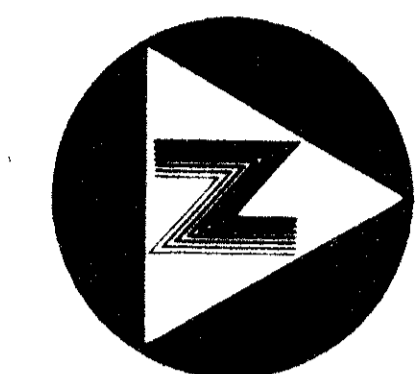
47/93

# CHAPEL CREEK

PARCEL G4-BOCA WEST, P.U.D.  
LYING IN SECTION 9, TOWNSHIP 47 SOUTH,  
RANGE 42 EAST, PALM BEACH COUNTY, FLORIDA  
SEPTEMBER, 1983

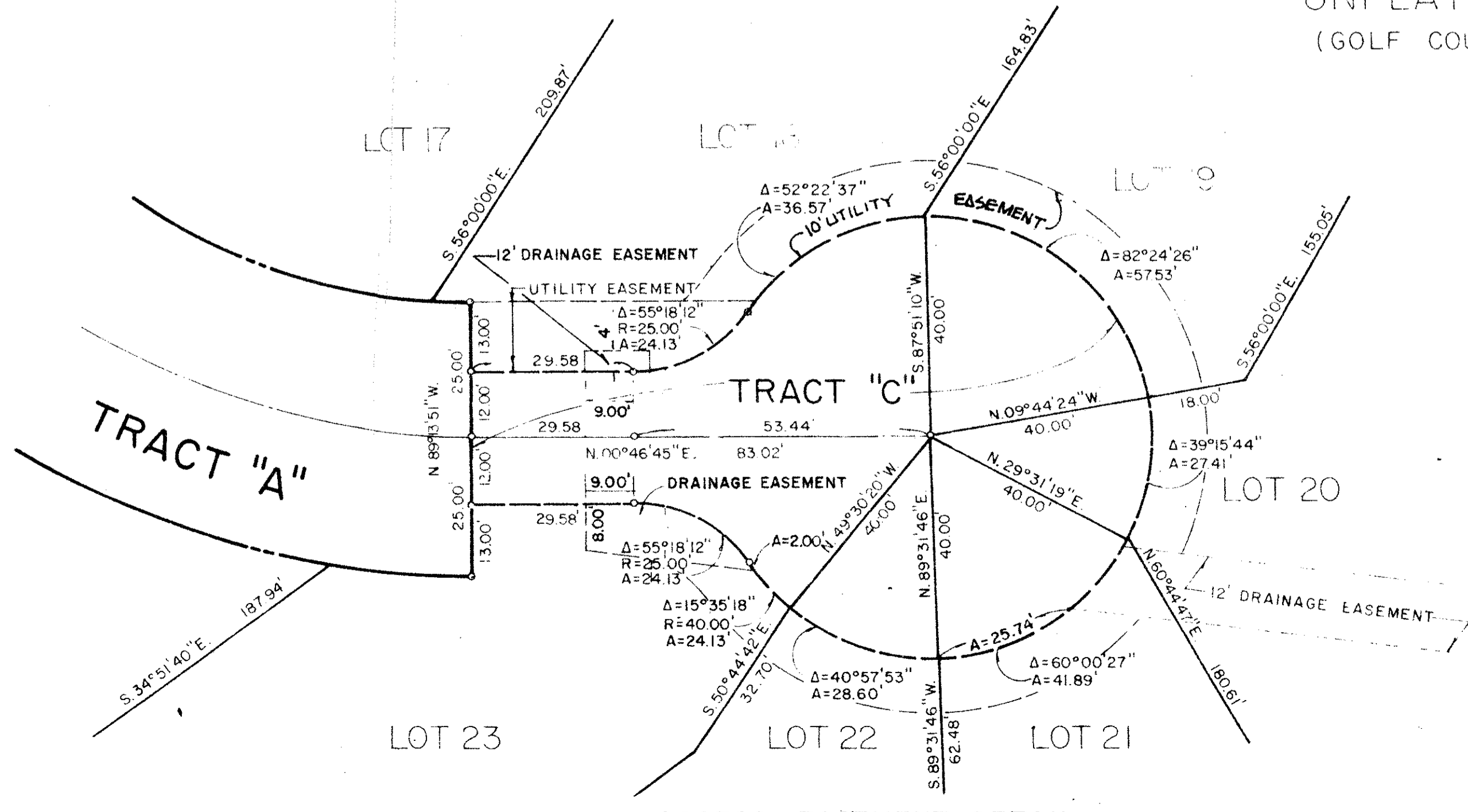
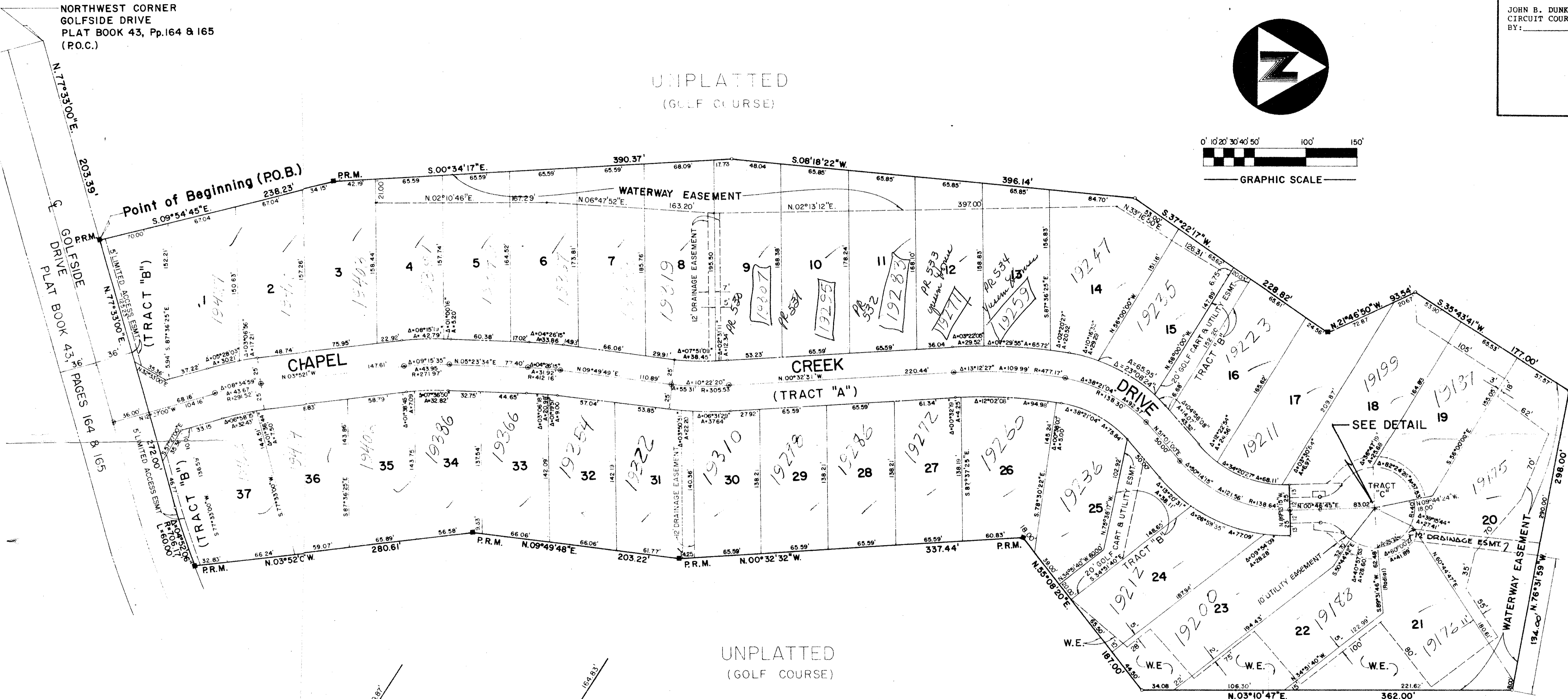
93

STATE OF FLORIDA  
COUNTY OF PALM BEACH  
THIS PLAT WAS FILED FOR  
RECORD AT \_\_\_\_\_ DAY OF  
THIS \_\_\_\_\_, AD, 1984 AND  
DULY RECORDED IN PLAT BOOK  
ON PAGES \_\_\_\_\_ AND  
\_\_\_\_\_  
JOHN B. DUNKLE, CLERK  
CIRCUIT COURT  
BY: \_\_\_\_\_ DC



NORTHWEST CORNER  
GOLFSIDE DRIVE  
PLAT BOOK 43, Pp.164 & 165  
(P.O.C.)

UNPLATTED  
(GOLF COURSE)



0214-001

- LEGEND —
- PERMANENT REFERENCE MONUMENT
  - PERMANENT CONTROL POINT
  - WE - WATERWAY EASEMENT

BOOK	PAGE
FLOOD ZONE	FLOOD MAP
QUAD	ZONING
SE	MAP CODE
PUD NAME	

**BENCH MARK**  
land surveying and mapping, inc.  
WEST PALM BEACH, FLORIDA

47/93

CONRAD W. SCHAEFER CONSULTING ENGINEERS, INC. PALM BEACH COUNTY, FLORIDA			
CHAPEL CREEK RECORD PLAT			
DESIGNED	DRAWN	CHECKED	TRAINING NO.
DATE	ELO	APPROVED	P-3100
	1"=50'		FILE NO. 2 2