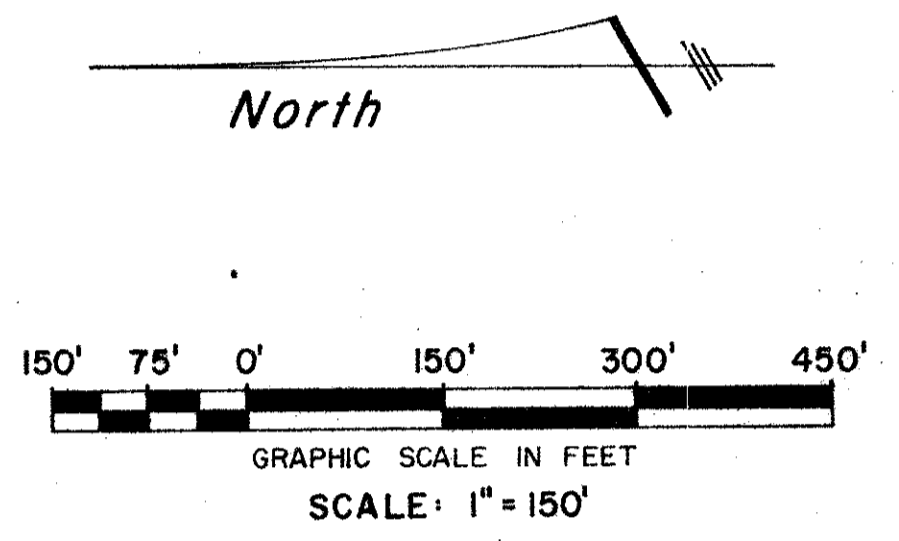
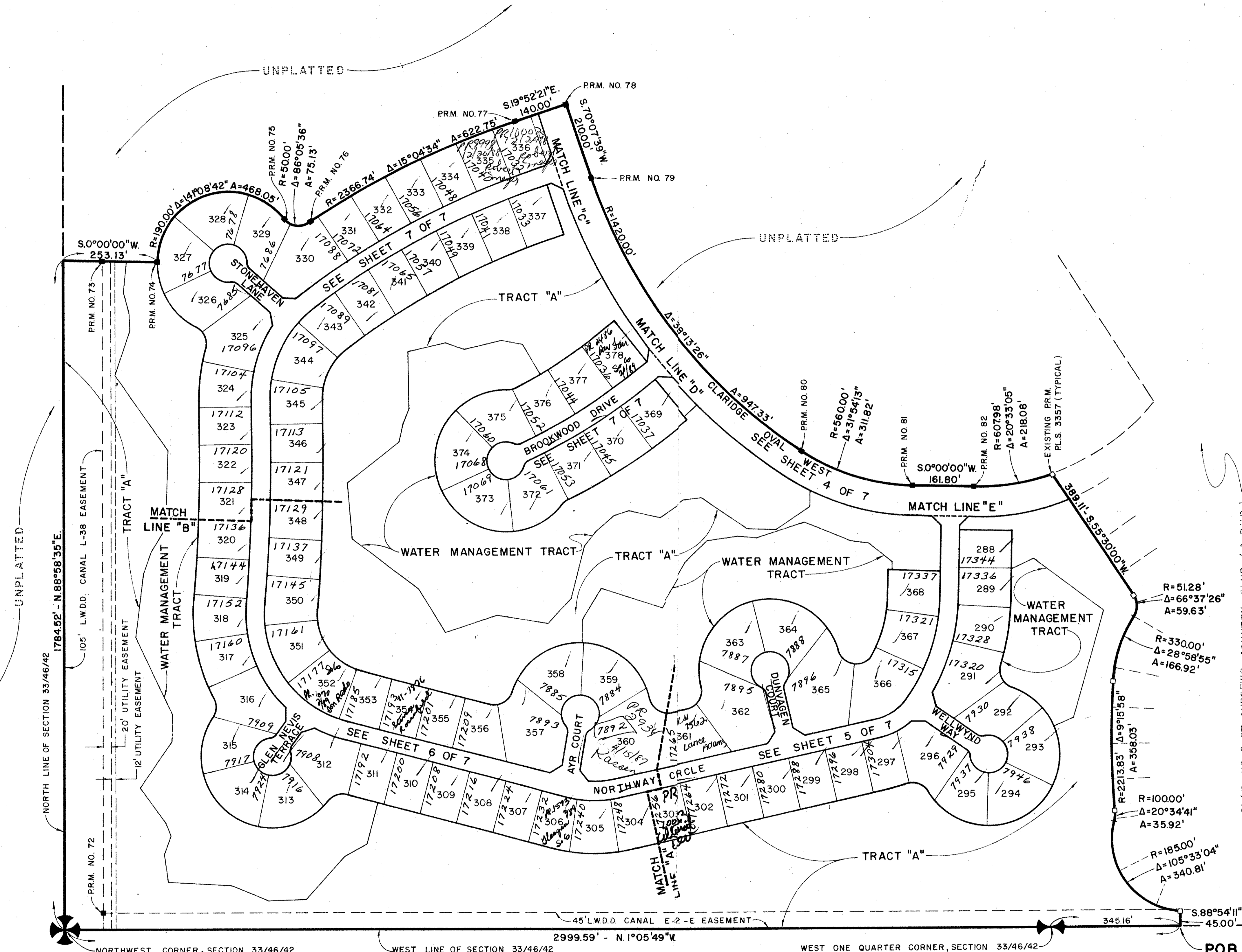


47/111

111

47



PLAT NO. 2 ST. ANDREWS COUNTRY CLUB (A P.U.D.)
 P.B. 43, P.68, 170-178

47 / 111
 0305-007

23/40/42
 APPROVED BY ST. Andrews Country Club
 BOOK 47 PAGE 111
 FILED WITH 16 RECORDED 2340 B
 DATE 53 DRAWN RE
 OF PUD 23/40/42
 PUD NAME ST. ANDREWS C.C.

PLAT No. 5
ST. ANDREWS COUNTRY CLUB
 (A P.U.D.)

WILLIAM G. WALLACE, INC.
 CIVIL ENGINEERS, LAND PLANNERS & SURVEYORS
 3241 SW MARRIAGE RD., PALM CITY PLAZA, PALM CITY, FL 32909 • 305/942-4233

FIELD: M. BONIN	JOB NO.: 83-640	P.G.
OFFICE: R.M. RODANO	DATE: NOV, 1983	DWG. NO.: 83-640
CHK'D:	REF:	SHEET 3 OF 7

BRUNING 44-52-51423