

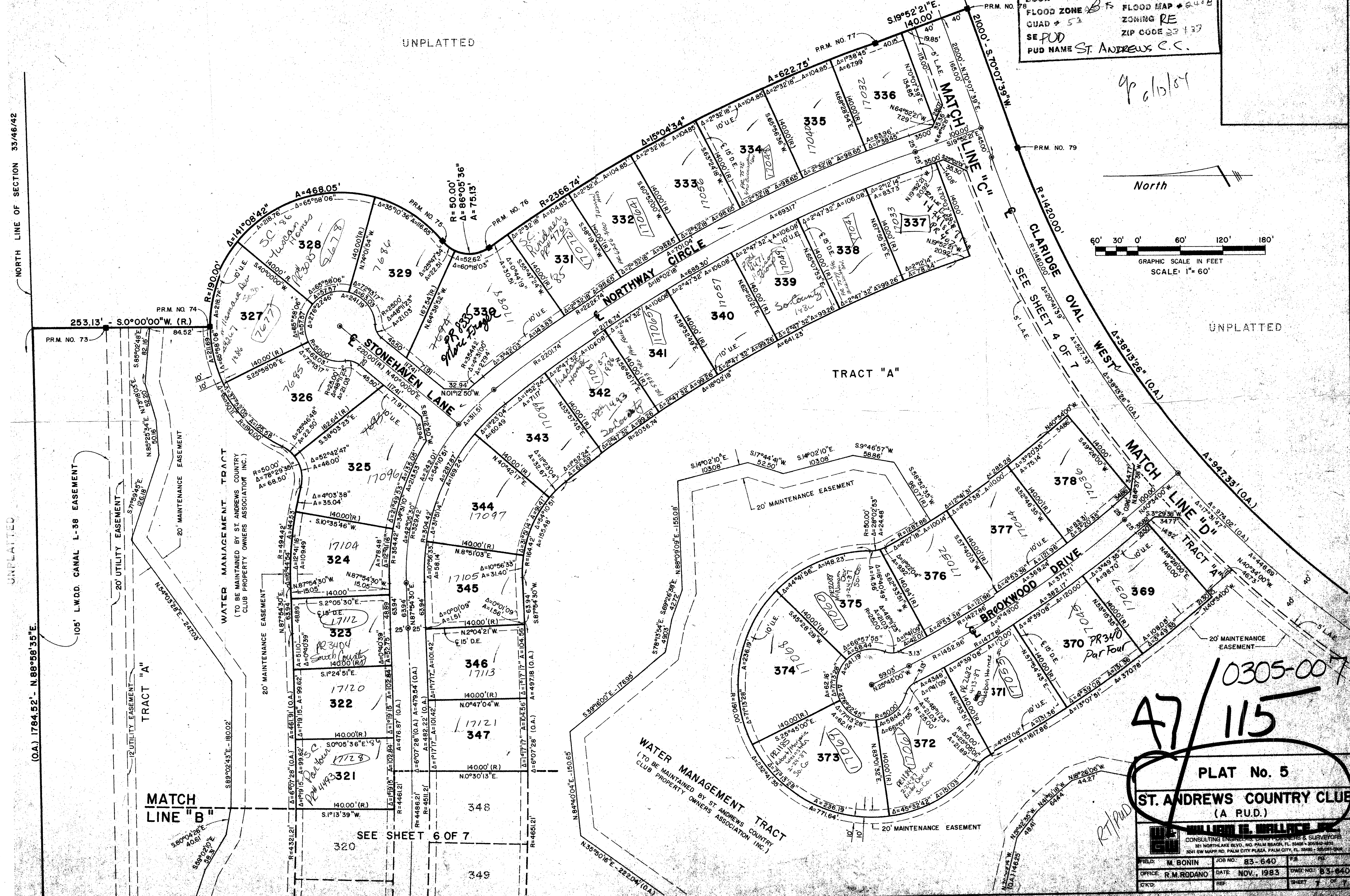
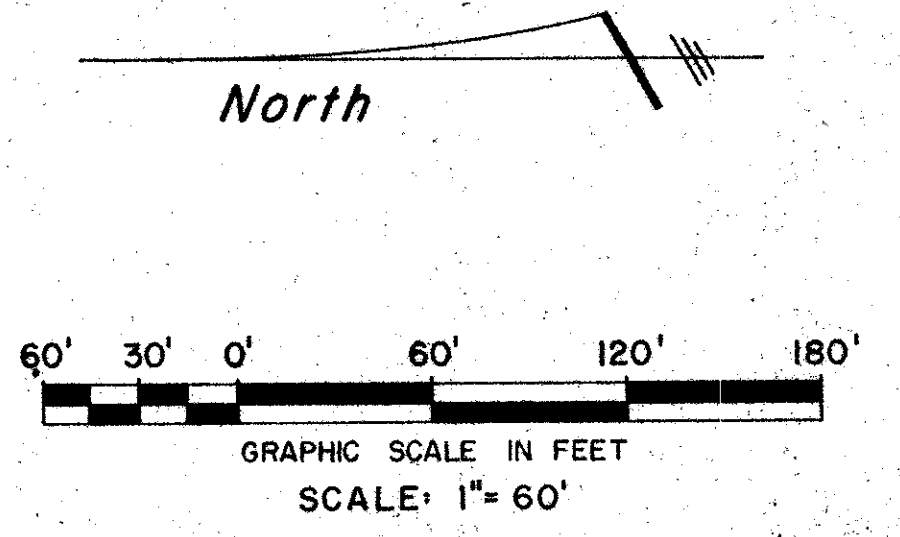
47/115

115

2/14/83

SUBDIVISION \* St. Andrews Country Club  
 BOOK 47 PAGE 115  
 FLOOD ZONE B-F FLOOD MAP # 24-B  
 QUAD # 5 ZONING RE  
 SE PUD ZIP CODE 33133  
 PUD NAME ST. ANDREWS C.C.

9/6/84



47/115

PLAT No. 5  
 ST. ANDREWS COUNTRY CLUB  
 (A PUD.)

WILLIAM E. WALLACE, P.E.  
 CONSULTING ENGINEER, DESIGNERS & SURVEYORS  
 381 NORTHLAKE BLVD., NO. PALM BEACH, FL. 33408  
 324 SW MAPLE RD., PALM CITY PLAZA, PALM CITY, FL. 32909

FIELD: M. BONIN	JOB NO.: 83-640	PS:
OFFICE: R.M. RODANO	DATE: NOV., 1983	DWG. NO.: 83-640
CVD:	REF:	SHEET: 5 OF 7

NORTH LINE OF SECTION 33/46/42

UNPLATTED

(O.A.) 1784.52' - N. 89° 58' 35" E.

MATCH LINE "B"

SEE SHEET 6 OF 7

TRACT "A"

PLAT No. 5

ST. ANDREWS COUNTRY CLUB (A PUD.)

WILLIAM E. WALLACE, P.E. CONSULTING ENGINEER, DESIGNERS & SURVEYORS

Table with project details: FIELD, OFFICE, CVD, JOB NO., DATE, REF., PS, DWG. NO., SHEET.