

47/121

121

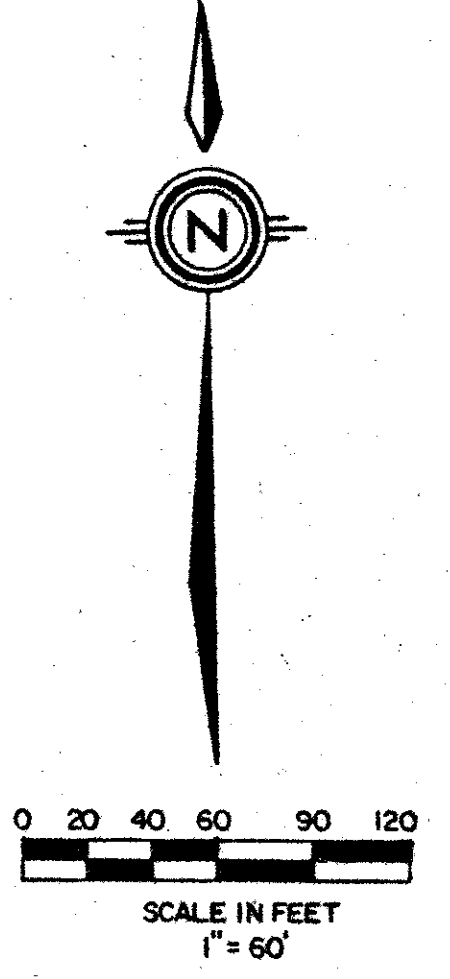
WHISPER WALK SECTION A, PLAT NO. 2 (PART OF A P.U.D.)

SITUATE IN SECTION 5, TOWNSHIP 47 SOUTH, RANGE 42 EAST, PALM BEACH COUNTY, FLORIDA, BEING A REPLAT OF A PORTION OF TRACT A OF THE BOUNDARY PLAT OF WHISPER WALK (P.B. 43, P. 189-191).

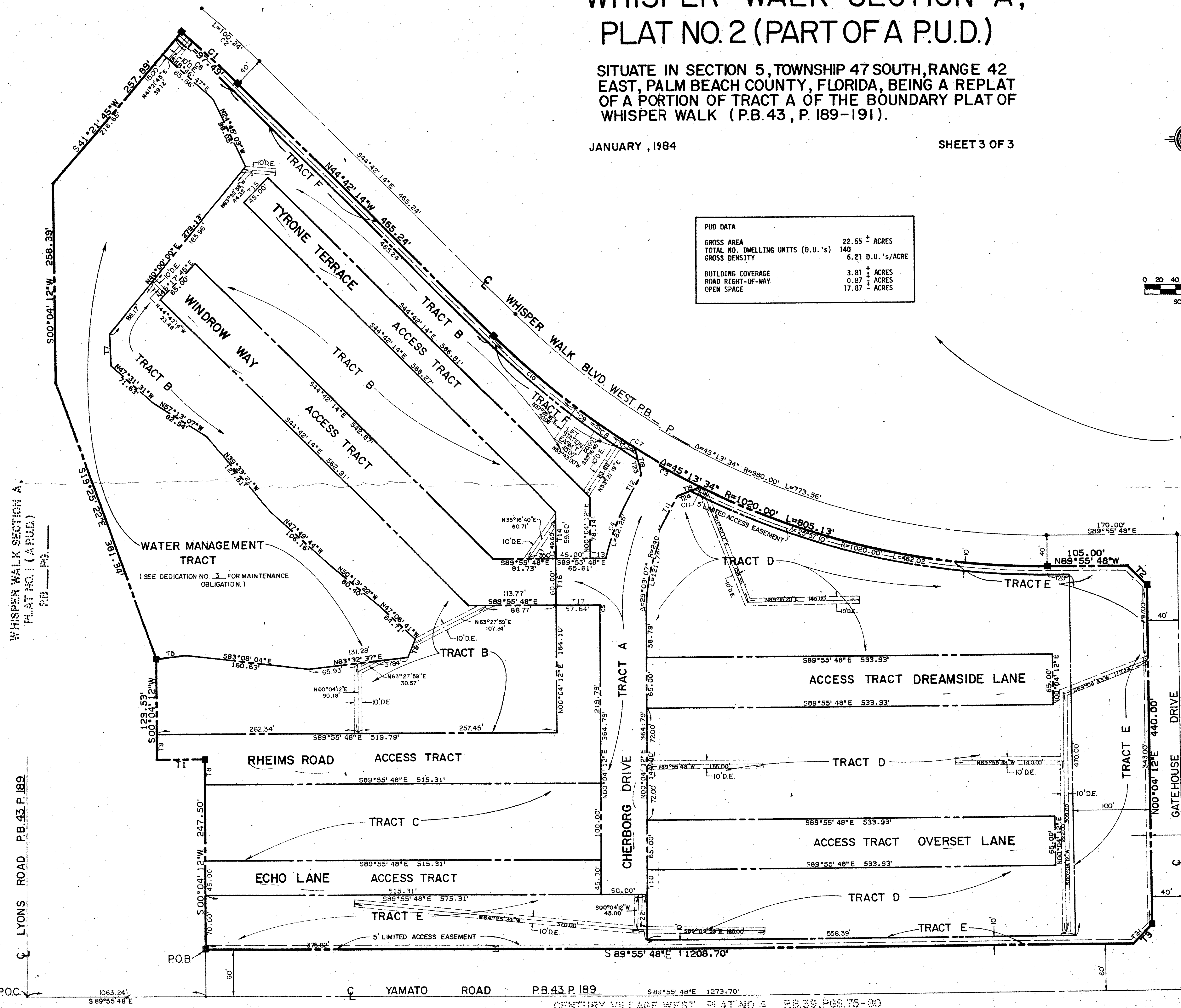
JANUARY, 1984

SHEET 3 OF 3

STATE OF FLORIDA
COUNTY OF PALM BEACH
THIS PLAT WAS FILED FOR
RECORD AT
THIS DAY OF
AD. 1984 AND DULY RECORDED
IN PLAT BOOK 47 ON PAGES
AND
JOHN B. DINKLE, CLERK
CIRCUIT COURT
BY: DC.



PUD DATA	
GROSS AREA	22.55 ± ACRES
TOTAL NO. DWELLING UNITS (D.U.'s)	140
GROSS DENSITY	6.21 D.U.'s/ACRE
BUILDING COVERAGE	3.81 ± ACRES
ROAD RIGHT-OF-WAY	0.87 ± ACRES
OPEN SPACE	17.87 ± ACRES



BOUNDARY PLAT OF WHISPER WALK A P.U.D. PB. 43, PGS. 189-191/191/86

Bldg #69 - PR-237 - 12/16/85
Bldg #71 - PR-914 - 11/21/85
Bldg #72 - PR-6048 - 3/30/85
Bldg #77 - PR-5059 - 7/17/85
Bldg #78 - PR-4771 - 6/11/85
Bldg #80 - PR-4172 - 6/11/85
Bldg #81 - PR-6519 - 8/12/85
Bldg #82 - PR-2060 - 7/17/85
Bldg #83 - PR-4773 - 6/11/85
Bldg #84 - PR-4770 - 6/11/85
Bldg #85 - PR-6511 - 11/21/85
Bldg #86 - PR-6513 - 11/21/85
Bldg #87 - PR-6512 - 11/21/85
Bldg #88 - PR-6514 - 11/21/85
Bldg #89 - PR-6515 - 11/21/85

NO	BEARING	DISTANCE
T1	S89°55'48"E	61.98
T2	N44°55'48"W	35.36
T3	N45°04'12"E	35.36
T4	S00°04'12"W	60.00
T5	N82°57'13"W	37.63
T6	N22°57'48"E	25.00
T7	N01°43'48"W	41.23
T8	N00°04'12"E	32.50
T9	N00°04'12"E	32.50
T10	N00°04'12"E	32.00
T11	N29°07'19"E	36.34
T12	N29°07'19"E	36.34
T13	S89°55'48"E	20.61
T14	N00°04'12"E	59.60
T15	N45°17'46"E	45.00
T16	N00°04'12"E	60.00
T17	S89°55'48"E	57.64
T18	S14°22'10"E	34.41
T19	N72°36'40"E	34.41
T20	S89°55'48"E	30.00
T21	S45°04'12"W	21.21
T22	N00°04'12"E	60.00
T23	S14°22'10"E	19.96
T24	N72°36'49"E	19.96

0339-301

NO	BELT	RADIUS	LENGTH
C1	03°56'01"	1420.00	97.49
C2	03°56'01"	1460.00	100.24
C3	06°02'02"	1020.00	107.42
C4	15°42'06"	300.16	82.26
C5	01°46'38"	300.16	9.31
C6	03°56'01"	1410.00	96.80
C7	01°12'58"	1020.00	21.65
C8	01°05'26"	1020.00	34.25
C9	02°08'31"	1020.00	38.13
C10	07°52'30"	1020.00	140.19
C11	00°04'56"	1020.00	146

47/121

Meridian Surveying and mapping inc.
WEST PALM BEACH, FLORIDA

DRAWN	MEH	DATE	JANUARY, 1984
CHECKED		SCALE	1" = 60'
DRAWING NO.	81-P-058-2		

WHISPER WALK SECTION A
PLAT NO. 2 (PART OF A P.U.D.)

POC. 1063.24' S89°55'48"E