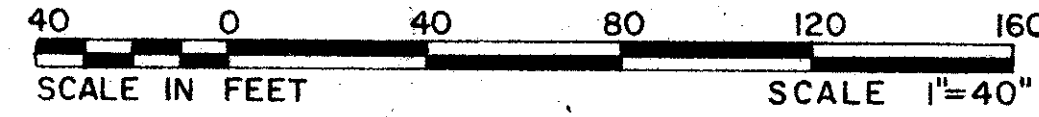


47/129

PEBBLEWOOD - PHASE III OF PALM BEACH POLO AND COUNTRY CLUB WELLINGTON - P.U.D.

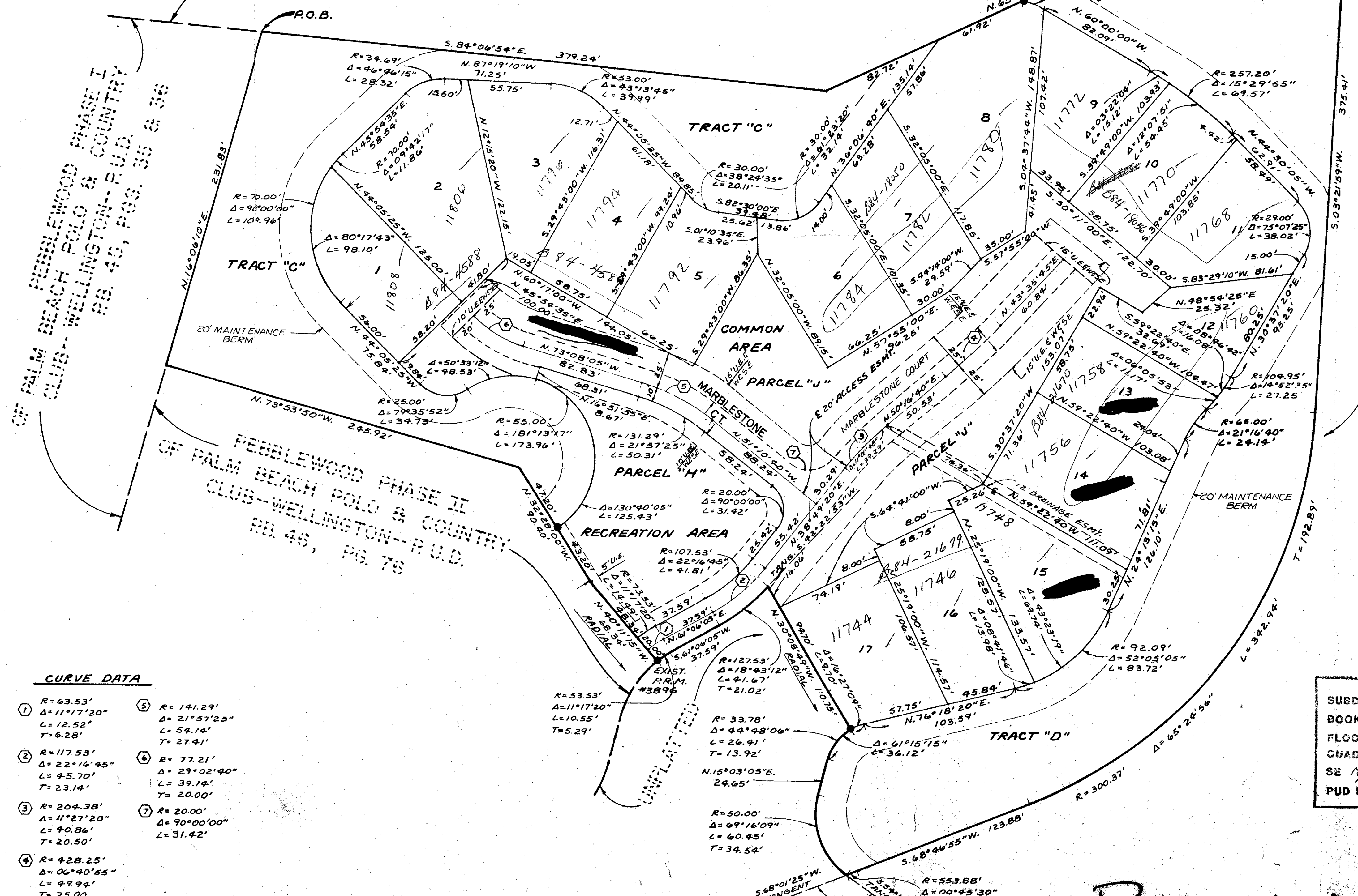
IN PART OF SECTION 14, TOWNSHIP 44 SOUTH, RANGE 41 EAST
PALM BEACH COUNTY, FLORIDA
IN TWO SHEETS SHEET NO. 2

GEE & JENSON
ENGINEERS - ARCHITECTS - PLANNERS, INC.
WEST PALM BEACH, FLORIDA
SEPTEMBER 1983



GOLF & TENNIS VILLAGE - PARCEL "C"
OF PALM BEACH POLO & COUNTRY CLUB - WELLINGTON - P.U.D.
PB 44, PGS. 184 & 185

STATE OF FLORIDA
COUNTY OF PALM BEACH
This plat was filed for
record at _____ M. this day
of _____ 1982, and duly
recorded in Plat Book No. _____
on Page _____
JOHN B. DUNKLE
Clerk Circuit Court
By: _____ D.C.



OF PALM BEACH POLO & COUNTRY CLUB - WELLINGTON - P.U.D. PB 44, PGS. 184 & 185

PEBBLEWOOD PHASE II
OF PALM BEACH POLO & COUNTRY CLUB - WELLINGTON - P.U.D.
PB 44, PG. 78

AID CANAL C-21

CURVE DATA

① R=63.53' Δ=11°17'20" L=12.52' T=6.28'	⑤ R=141.29' Δ=21°57'23" L=59.14' T=27.41'
② R=117.53' Δ=22°16'45" L=45.70' T=23.14'	⑥ R=77.21' Δ=29°02'40" L=39.14' T=20.00'
③ R=204.38' Δ=11°27'20" L=90.86' T=20.50'	⑦ R=30.00' Δ=90°00'00" L=31.42'
④ R=428.25' Δ=06°40'55" L=49.94' T=25.00'	

SUBDIVISION #
BOOK 47 PAGE 129
FLOOD ZONE A-1 FLOOD MAP # 100B
QUAD # C-2 ZONING AR
SE 1/4 ZIP CODE 33411
PUD NAME Wellington

0332-025
14-44-41
AR PUD A01

Quad 62

47/129

PEBBLEWOOD PHASE II PUD