

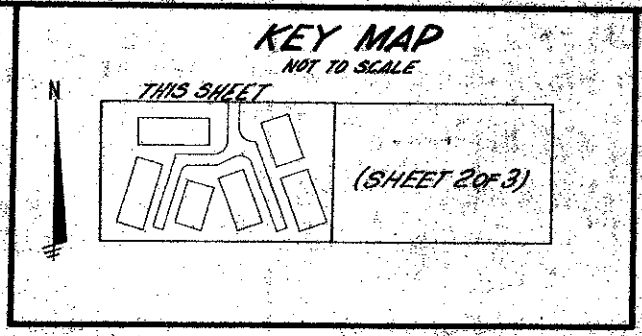
17/136

# BOCA BEND - A P.R.D.

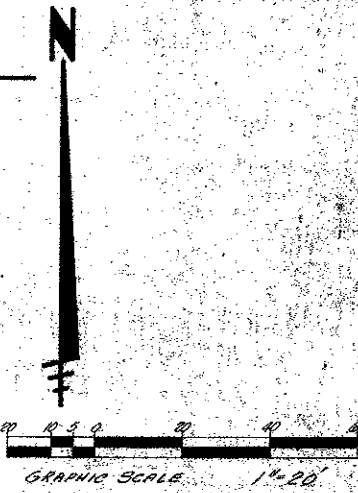
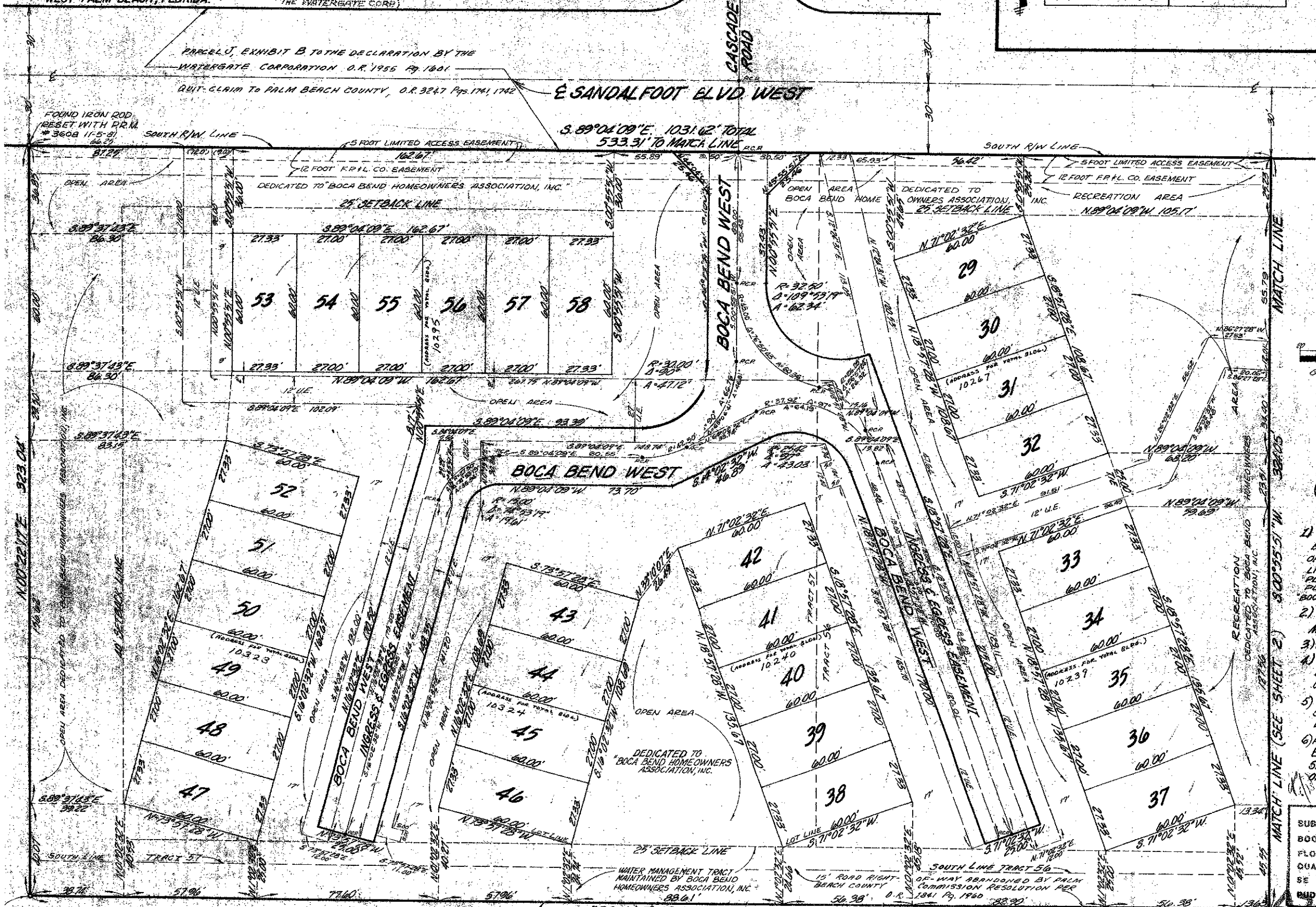
THIS INSTRUMENT PREPARED UNDER THE DIRECTION OF JOHN H. FITSCHEN  
**Craven Thompson & Associates, Inc.**  
LAND SURVEYORS - CIVIL ENGINEERS  
3974 OKEECHOBEE BOULEVARD  
WEST PALM BEACH, FLORIDA.

O.R. 1955 19, 1001  
ASSESSOR'S MAP NO. 97  
(SHEET NO. 1 - DECLARATION BY THE WATERGATE CORP.)

A REPLAT OF A PORTION OF TRACT 56 AND TRACT 57, FLORIDA FRUITLANDS CO. SUBDIVISION NO. 2 AS RECORDED IN PLAT BOOK 1 PAGE 102, OF THE PUBLIC RECORDS OF PALM BEACH COUNTY, FLORIDA, AND LYING IN SECTION 25, TOWNSHIP 47 SOUTH, RANGE 41 EAST, PALM BEACH COUNTY, FLORIDA.



## 136



0204-000

### SURVEYOR'S NOTES

- 1) BEARINGS AS SHOWN HEREON ARE BASED ON AN ASSUMED BEARING OF N. 88° 57' 28" W. FOR THE NORTH LINE OF "BOCA ENTRADA PLAT NO. 1" PLAT BOOK 31, PAGES 95 & 96. THE PLATTED BEARING ON NORTH LINE OF "BOCA ENTRADA PLAT NO. 1" IS N. 88° 54' 18" W.
- 2) O DENOTES PERMANENT REFERENCING MONUMENT (PERM)
- 3) U.E. DENOTES UTILITY EASEMENT
- 4) NO BUILDINGS OR ANY KIND OF CONSTRUCTION SHALL BE PLACED ON UTILITY OR DRAINAGE EASEMENTS
- 5) NO STRUCTURES, TREES OR SHRUBS SHALL BE PLACED ON DRAINAGE EASEMENTS
- 6) APPROVAL OF LANDSCAPING ON UTILITY EASEMENTS OTHER THAN WATER OR SEWER SHALL BE ONLY WITH APPROVAL OF ALL UTILITIES OCCUPYING SAME.

SUBDIVISION	* P.S. 2000-0
BOOK	47
PAGE	136
FLOOD ZONE	A-0
FLOOD MAP	1-1-1
QUAD	#
ZONING	AR
SE	P.R.D.
ZIP CODE	33407
RD NAME	BOCA BEND

FOUND IRON ROD RESET WITH P.R.M. #3608 11-5-91

BOCA ENTRADA PLAT NO. 1 P.B. 31 PGS 95 & 96

530.16' TO MATCH LINE N. 88° 57' 28" W. 1031.32' TOTAL

15' ROAD RIGHT OF-WAY ABANDONED BY PALM BEACH COUNTY COMMISSION RESOLUTION PER 1981 P. 1760

BOCA BEND 17/136 SHEET 3 OF 3 SHEETS