

RAINBOW LAKES 1

A PART OF TARTAN LAKES, P.U.D.

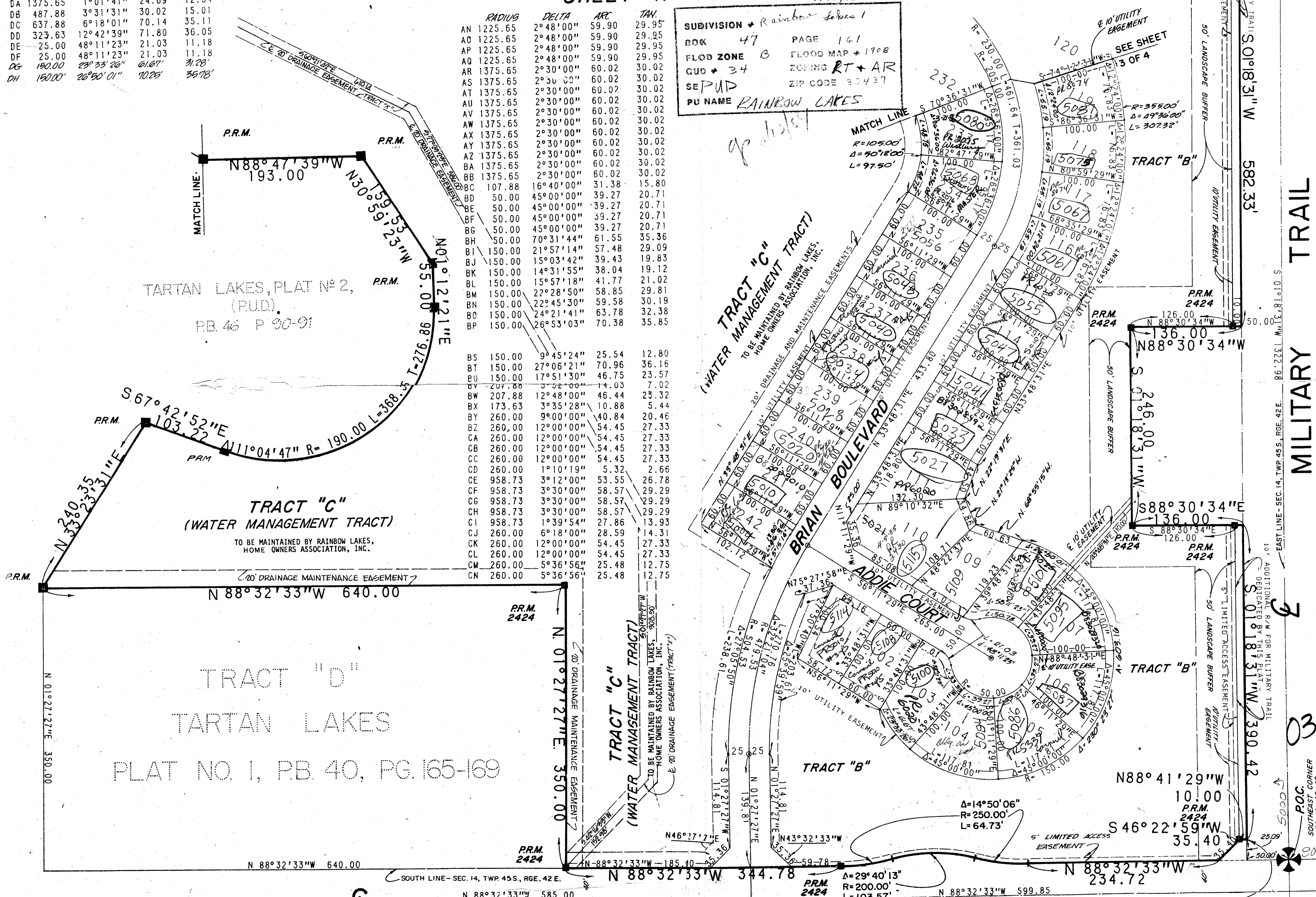
BEING PART OF SECTION 14, TOWNSHIP 45 SOUTH,
RANGE 42 EAST, PALM BEACH COUNTY, FLORIDA.
JULY, 1983

SHEET No. 2 of 4

	RADIUS	DELTA	ARC	TAN.
CO	260.00	12°00'00"	34.45	27.33
CP	260.00	7°30'51"	34.10	17.07
CQ	50.00	45°00'00"	39.27	20.71
CR	50.00	45°00'00"	39.27	20.71
CS	105.00	13°00'00"	23.82	11.96
CT	105.00	26°00'00"	47.65	24.24
CU	105.00	26°00'00"	47.65	24.24
CV	105.00	25°00'00"	45.81	23.28
CW	357.88	1°30'00"	9.37	4.68
CX	357.88	8°30'00"	53.09	26.59
CY	357.88	6°40'00"	41.64	20.84
CZ	1375.65	0°58'19"	23.33	11.67
DA	1375.65	1°01'41"	24.69	12.34
DB	487.88	3°31'31"	30.02	15.01
DC	637.88	6°18'01"	70.14	35.11
DD	323.63	12°42'39"	71.80	36.05
DE	25.00	48°11'23"	21.03	11.18
DF	25.00	48°11'23"	21.03	11.18
DG	150.00	28°33'26"	61.67	31.28
DH	150.00	26°50'01"	70.28	35.78

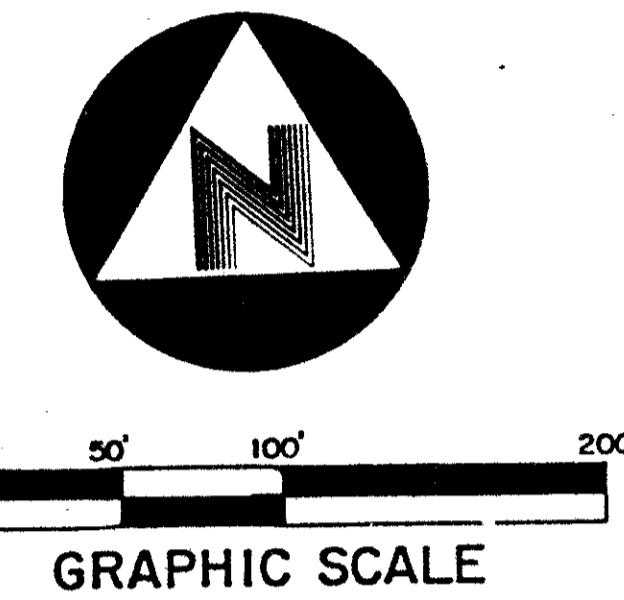
SUBDIVISION * Rainbow Lakes 1
 BOOK 47 PAGE 161
 FLOOD ZONE B FLOOD MAP # 170B
 GUD # 34 ZONING RT * AR
 SEPAD ZIP CODE 33437
 PU NAME RAINBOW LAKES

	RADIUS	DELTA	ARC	TAN.
AN	1225.65	2°48'00"	59.90	29.95
AO	1225.65	2°48'00"	59.90	29.95
AP	1225.65	2°48'00"	59.90	29.95
AQ	1225.65	2°48'00"	59.90	29.95
AR	1375.65	2°30'00"	60.02	30.02
AS	1375.65	2°30'00"	60.02	30.02
AT	1375.65	2°30'00"	60.02	30.02
AU	1375.65	2°30'00"	60.02	30.02
AV	1375.65	2°30'00"	60.02	30.02
AW	1375.65	2°30'00"	60.02	30.02
AX	1375.65	2°30'00"	60.02	30.02
AY	1375.65	2°30'00"	60.02	30.02
AZ	1375.65	2°30'00"	60.02	30.02
BA	1375.65	2°30'00"	60.02	30.02
BB	1375.65	2°30'00"	60.02	30.02
BC	107.88	16°40'00"	31.38	15.80
BD	50.00	45°00'00"	39.27	20.71
BE	50.00	45°00'00"	39.27	20.71
BF	50.00	45°00'00"	39.27	20.71
BG	50.00	45°00'00"	39.27	20.71
BH	50.00	70°31'44"	61.55	35.36
BI	150.00	21°57'14"	57.48	29.09
BJ	150.00	15°03'42"	39.43	19.83
BK	150.00	14°31'55"	38.04	19.12
BL	150.00	15°57'18"	41.77	21.02
BM	150.00	22°28'50"	58.85	29.81
BN	150.00	22°45'30"	59.58	30.19
BO	150.00	24°21'41"	63.78	32.38
BP	150.00	26°53'03"	70.38	35.85
BS	150.00	9°45'24"	25.54	12.80
BT	150.00	27°06'21"	70.96	36.16
BV	150.00	17°51'30"	46.75	23.57
BW	207.88	12°48'00"	46.44	23.32
BX	173.63	3°35'28"	10.88	5.44
BY	260.00	9°00'00"	40.84	20.46
BZ	260.00	12°00'00"	54.45	27.33
CA	260.00	12°00'00"	54.45	27.33
CB	260.00	12°00'00"	54.45	27.33
CC	260.00	12°00'00"	54.45	27.33
CD	260.00	1°10'19"	5.32	2.66
CE	958.73	3°12'00"	53.55	26.78
CF	958.73	3°30'00"	58.57	29.29
CG	958.73	3°30'00"	58.57	29.29
CH	958.73	3°30'00"	58.57	29.29
CJ	958.73	1°39'54"	27.86	13.93
CK	260.00	6°18'00"	28.59	14.31
CL	260.00	12°00'00"	54.45	27.33
CM	260.00	5°36'56"	25.48	12.75
CN	260.00	5°36'56"	25.48	12.75



STATE OF FLORIDA
 COUNTY OF PALM BEACH
 THIS PLAT WAS FILED FOR
 RECORD AT _____ DAY OF
 _____, AD, 1984 AND
 DULY RECORDED IN PLAT BOOK
 _____ ON PAGES _____ AND

 JOHN B. DUNKLE, CLERK
 CIRCUIT COURT
 BY: _____ DC



ID	RADIUS	DELTA	ARC LGT	TANGENT
A	50.00	38°11'23"	33.33	17.31
B	50.00	45°00'00"	39.27	20.71
C	50.00	45°00'00"	39.27	20.71
D	50.00	45°00'00"	39.27	20.71
E	50.00	45°00'00"	39.27	20.71
F	50.00	58°11'23"	50.78	27.82
G	255.00	12°24'00"	55.19	27.70
H	255.00	12°24'00"	55.19	27.70
I	255.00	12°24'00"	55.19	27.70
J	255.00	12°24'00"	55.19	27.70
K	255.00	12°24'00"	55.19	27.70
L	255.00	12°24'00"	55.19	27.70
M	255.00	12°24'00"	55.19	27.70
N	255.00	12°24'00"	55.19	27.70
O	255.00	12°24'00"	55.19	27.70
P	255.00	3°24'00"	15.13	7.57
Q	504.53	5°15'14"	46.26	23.15
R	105.00	26°36'00"	48.75	24.82
S	105.00	26°36'00"	48.75	24.82
T	105.00	26°36'00"	48.75	24.82
U	105.00	26°36'00"	48.75	24.82
V	105.00	8°36'00"	15.76	7.89
W	127.50	13°36'32"	30.28	15.21
X	127.50	5°18'56"	11.83	5.92
Y	127.50	5°18'56"	11.83	5.92
Z	127.50	13°36'32"	30.28	15.21
AA	50.00	48°11'23"	42.05	22.36
AB	50.00	45°00'00"	39.27	20.71
AC	50.00	45°00'00"	39.27	20.71
AD	50.00	45°00'00"	39.27	20.71
AE	50.00	45°00'00"	39.27	20.71
AF	50.00	48°11'23"	42.05	22.36
AG	1225.65	1°48'00"	38.50	19.25
AH	1225.65	2°48'00"	59.90	29.95
AI	1225.65	2°48'00"	59.90	29.95
AJ	1225.65	2°48'00"	59.90	29.95
AK	1225.65	2°48'00"	59.90	29.95
AL	1225.65	2°48'00"	59.90	29.95
AM	1225.65	2°48'00"	59.90	29.95

AT/161
 BENCH MARK
 Surveying and Mapping, Inc.
 CONSULTING ENGINEERS, INC.
 PALM BEACH COUNTY, FLORIDA

DESIGNED: CS DRAWN: PB CHECKED: TLO JOB NO: P-2400 DRAWING NO:
 DATE: 9-83 SCALE: 1"=60' APPROVED: CS FILE NO: SHEET: 2 of 4

47/161

TARTAN LAKES BOULEVARD
 TARTAN LAKES, PLAT NO. 1 (PB. 40, PGS. 165-169)

NE. LY MOST CORNER OF
 TARTAN LAKES, PLAT NO. 1
 (PB. 40, PGS. 165-169)
 R.O.B.