

47/162

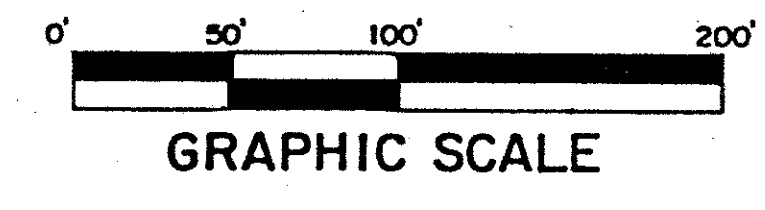
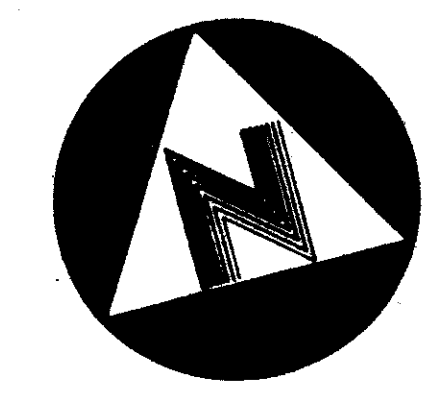
# RAINBOW LAKES 1

A PART OF TARTAN LAKES, P.U.D.

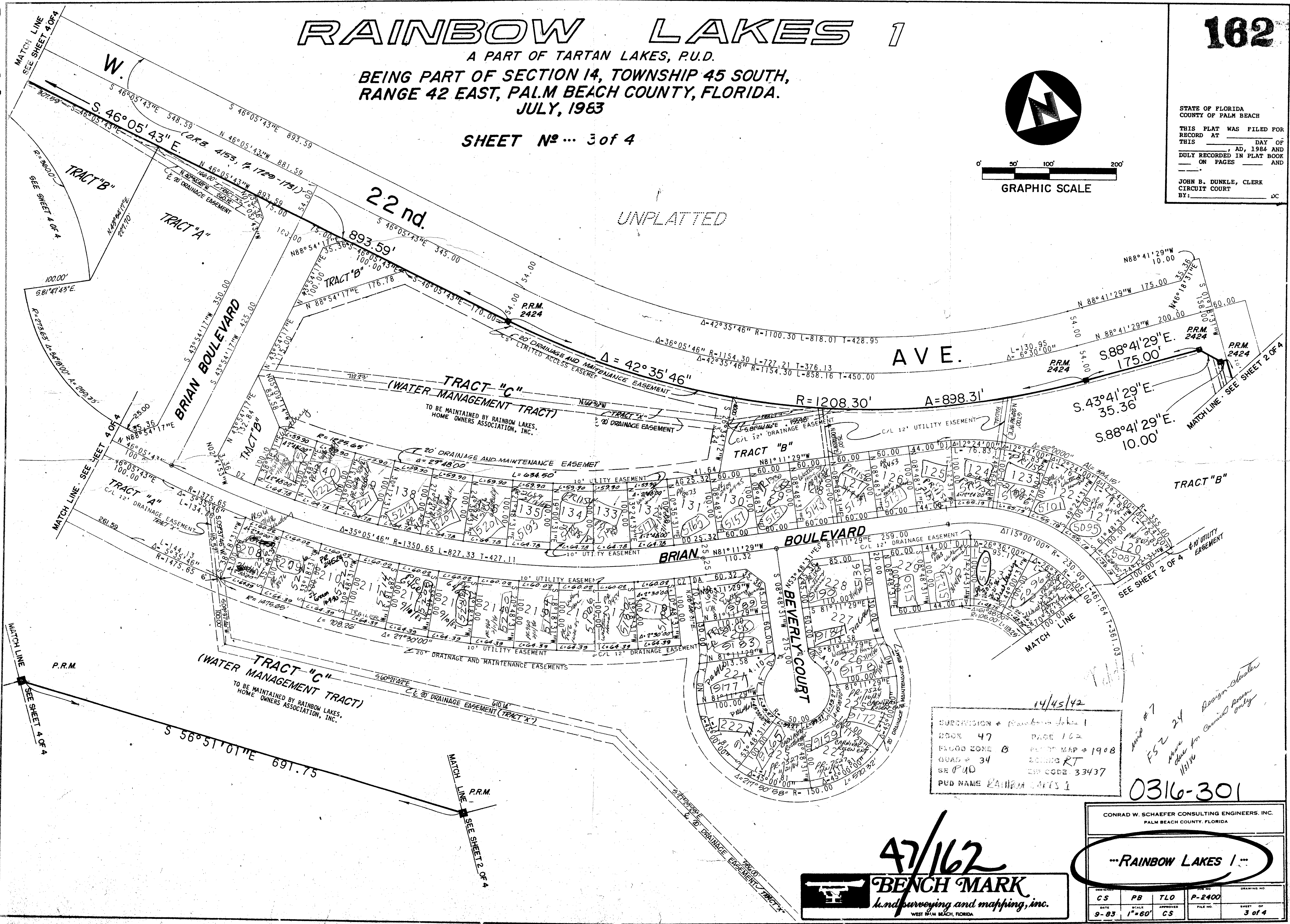
BEING PART OF SECTION 14, TOWNSHIP 45 SOUTH,  
RANGE 42 EAST, PALM BEACH COUNTY, FLORIDA.  
JULY, 1983

SHEET No... 3 of 4

162



STATE OF FLORIDA  
COUNTY OF PALM BEACH  
THIS PLAT WAS FILED FOR  
RECORD AT \_\_\_\_\_ DAY OF \_\_\_\_\_  
AD, 1984 AND  
DULY RECORDED IN PLAT BOOK  
\_\_\_\_\_ ON PAGES \_\_\_\_\_ AND  
\_\_\_\_\_  
JOHN B. DUNKLE, CLERK  
CIRCUIT COURT  
BY: \_\_\_\_\_ DC



14/45/42  
SUBDIVISION + Rainbow Lakes 1  
BOOK 47 PAGE 162  
PLATTED ZONE 0 PLATTED MAP # 1908  
QUAD # 34 ZONING RT  
SR PUD DIST CODE 33437  
PUD NAME RAINBOW LAKES 1

11/1/86  
FS 2 24  
Design-Checker  
Make other for Comm'l perm only

0316-301

**BENCH MARK**  
land surveying and mapping, inc.  
WEST PALM BEACH, FLORIDA

CONRAD W. SCHAEFER CONSULTING ENGINEERS, INC. PALM BEACH COUNTY, FLORIDA			
RAINBOW LAKES 1			
DESIGNED BY	CS	PB	TLO
DATE	9-83	SCALE	1"=60'
APPROVED BY	CS	FILE NO.	P-2400
DRAWING NO.		SHEET OF	3 of 4