

47/163

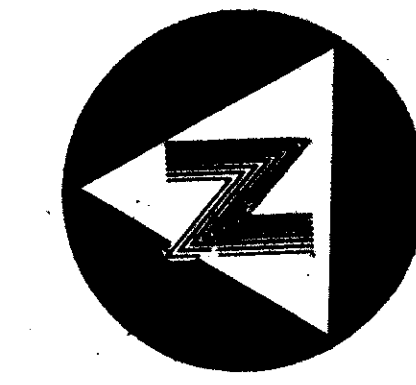
RAINBOW LAKES 1

PART OF TARTAN LAKES, P.U.D.

BEING PART OF SECTION 14, TOWNSHIP 45 SOUTH,
RANGE 42 EAST, PALM BEACH COUNTY, FLORIDA.
JULY, 1983

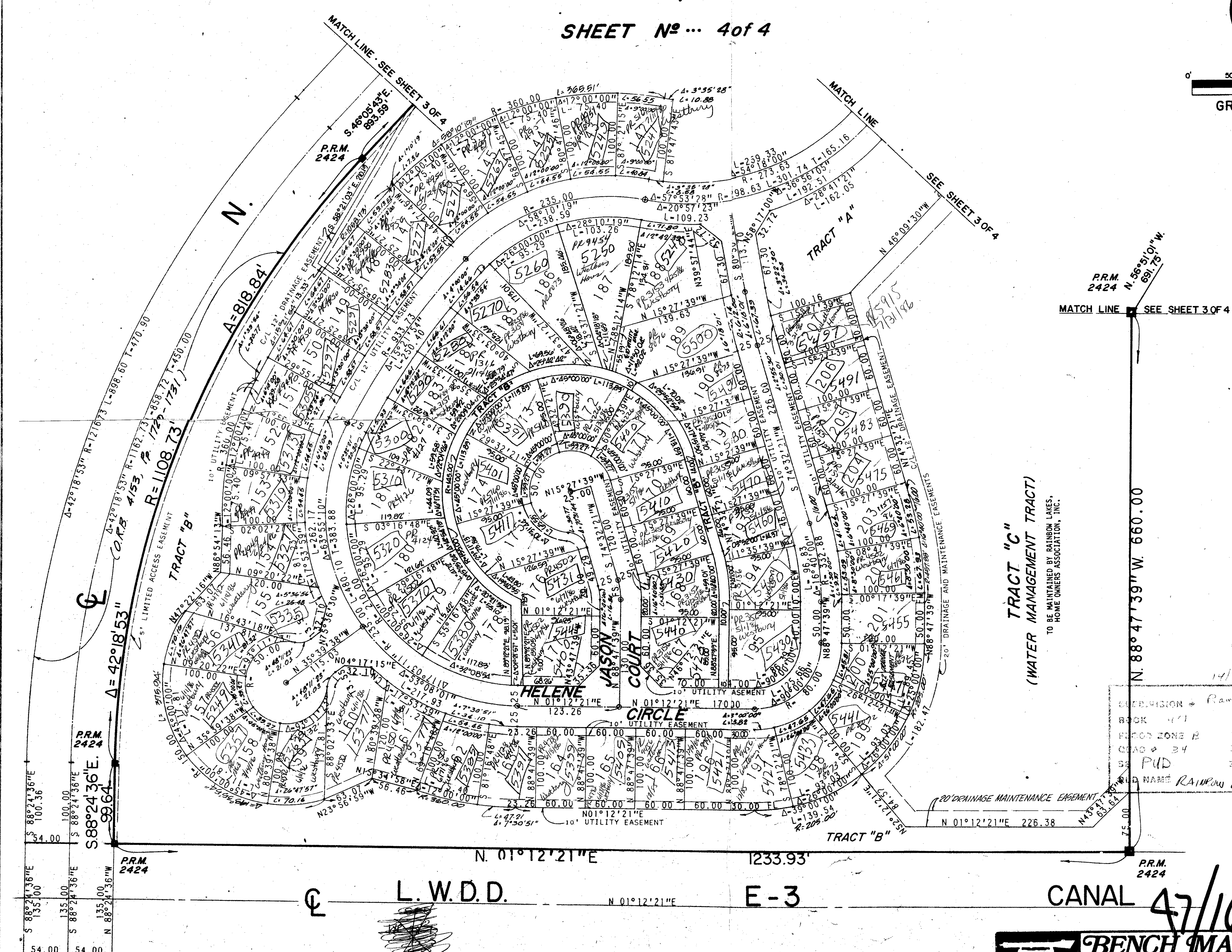
SHEET No... 4 of 4

163



STATE OF FLORIDA
COUNTY OF PALM BEACH
THIS PLAT WAS FILED FOR
RECORD AT _____ DAY OF
THIS _____, AD, 1984 AND
DULY RECORDED IN PLAT BOOK
_____ ON PAGES _____ AND

JOHN B. DUNKLE, CLERK
CIRCUIT COURT
BY: _____ DC



	RADIUS	DELTA	ARC	TAN
DG	150.00	23°33'26"	61.67	31.28
DH	150.00	26°50'01"	70.25	35.78
DI	355.00	3°24'00"	21.07	10.54
DJ	205.00	8°36'00"	30.77	15.41
DK	25.00	48°11'23"	21.03	11.18
DL	25.00	48°11'23"	21.03	11.18
DM	150.00	18°55'29"	49.54	25.00
DN	150.00	18°55'29"	49.54	25.00
DO	1325.65	1°48'00"	41.65	20.82
DP	1325.65	2°48'00"	64.78	32.40
DQ	1325.65	2°48'00"	64.78	32.40
DR	1325.65	2°48'00"	64.78	32.40
DS	1325.65	2°48'00"	64.78	32.40
DT	1325.65	2°48'00"	64.78	32.40
DU	1325.65	2°48'00"	64.78	32.40
DV	1325.65	2°48'00"	64.78	32.40
DW	1325.65	2°48'00"	64.78	32.40
DX	1325.65	2°48'00"	64.78	32.40
DY	1325.65	2°48'00"	64.78	32.40
DZ	1325.65	1°59'26"	46.05	23.03
EA	1475.65	2°30'00"	64.39	32.20
EB	1475.65	2°30'00"	64.39	32.20
ED	1475.65	2°30'00"	64.39	32.20
EE	1475.65	2°30'00"	64.39	32.20
EF	1475.65	2°30'00"	64.39	32.20
EG	1475.65	2°30'00"	64.39	32.20
EH	1475.65	2°30'00"	64.39	32.20
EI	1475.65	2°30'00"	64.39	32.20
EJ	1475.65	2°30'00"	64.39	32.20
EK	1475.65	2°30'00"	64.39	32.20
EL	207.88	16°40'00"	60.47	30.45
EM	25.00	70°31'44"	30.77	17.68
EO	57.88	16°40'00"	16.84	8.48
EP	210.00	5°32'21"	20.30	10.16
EQ	908.73	3°24'00"	53.93	26.97
ER	908.73	4°12'00"	66.61	33.32
ES	908.73	4°12'00"	66.61	33.32
ET	908.73	3°33'54"	56.54	28.28
EU	210.00	4°00'00"	14.66	7.33
EV	307.88	3°52'00"	20.78	10.39
EW	307.88	12°48'00"	68.78	34.53
EX	273.63	3°35'28"	17.15	8.58
EY	360.00	9°00'00"	56.55	28.33
EZ	360.00	1°10'19"	7.36	3.68
FA	1058.73	3°12'00"	59.13	29.57
FB	1058.73	3°30'00"	64.67	32.35
FC	1058.73	3°30'00"	64.67	32.35
FD	1058.73	3°30'00"	64.67	32.35
FE	1058.73	1°39'54"	30.77	15.38
FF	360.00	6°18'00"	39.58	19.81
FG	360.00	7°30'51"	47.21	23.64
FH	25.00	48°11'23"	21.03	11.18
FI	25.00	48°11'23"	21.03	11.18
FJ	150.00	26°47'57"	70.76	35.73
FK	150.00	26°47'57"	70.76	35.73
FL	205.00	13°00'00"	46.51	23.36
FM	457.88	1°30'00"	11.99	5.99
FN	457.88	8°30'00"	67.93	34.03
FO	457.88	6°40'00"	53.28	26.67
FP	587.88	2°55'30"	30.01	15.01
FQ	587.88	3°22'30"	34.63	17.32
FR	612.88	6°18'01"	67.39	33.73
FS	82.88	16°40'00"	24.11	12.14

TRACT "C"
(WATER MANAGEMENT TRACT)
TO BE MAINTAINED BY RAINBOW LAKES,
HOME OWNERS ASSOCIATION, INC.

REVISION - Rainbow Lakes 1
BOOK 471 PAGE 160
FLOOD ZONE B FLOOD MAP #110
ROAD # 34 ZONING RT
PUD ZIP CODE 33407
SUB NAME RAINBOW LAKES 1

0316-301

CONRAD W. SCHAEFER CONSULTING ENGINEERS, INC.
PALM BEACH COUNTY, FLORIDA

RAINBOW LAKES 1

DESIGNED	DRAWN	CHECKED	JOB NO.	DRAWING NO.
C S	PB	TLO	P-2400	
DATE	SCALE	APPROVED	FILE NO.	SHEET OF
9-83	1"=60'	CS		4 of 4

BENCH MARK
land surveying and mapping, inc.
WEST PALM BEACH, FLORIDA

L.W.D.D.

E-3

CANAL 47/163

S 01°12'21"W