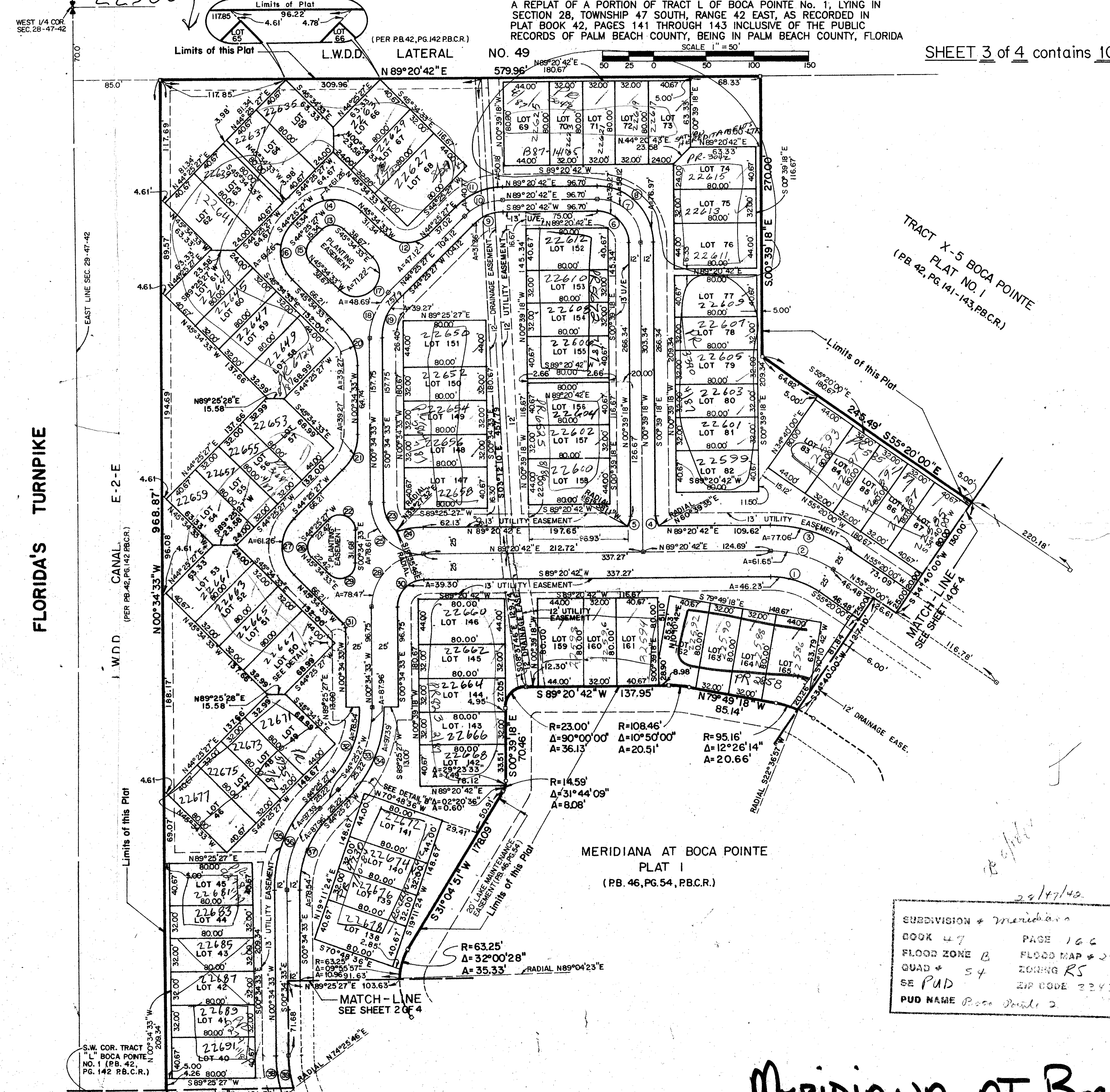


47/166

MERIDIANA AT BOCA POINTE PLAT II

PART OF A P.U.D.
 A REPLAT OF A PORTION OF TRACT L OF BOCA POINTE No. 1, LYING IN SECTION 28, TOWNSHIP 47 SOUTH, RANGE 42 EAST, AS RECORDED IN RECORDS OF PALM BEACH COUNTY, BEING IN PALM BEACH COUNTY, FLORIDA

SHEET 3 of 4 contains 10.7798 Ac.±



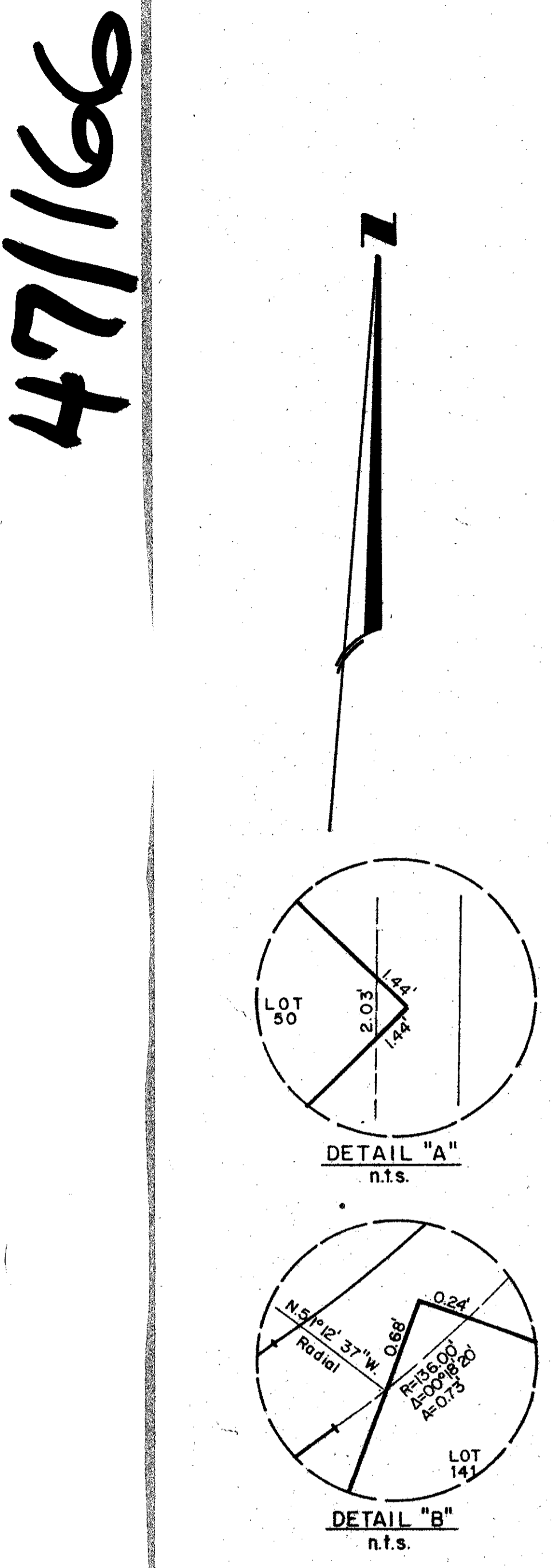
CURVE DATA for SHEET 3 of 4

| | | | |
|--|--|--|--|
| ① R=75.00' Δ=35°19'18" A=46.23' | ⑪ R=64.00' Δ=44°55'15" A=50.18' | ⑳ R=50.00' Δ=45°00'00" A=39.27' | ㉔ R=50.00' Δ=2°43'53" A=2.38' |
| ② R=100.00' Δ=35°19'18" A=61.65' | ⑫ R=30.00' Δ=90°00'00" A=47.12' | ㉑ R=15.00' Δ=135°00'00" A=35.34' | ㉕ R=100.00' Δ=45°00'00" A=78.54' |
| ③ R=125.00' Δ=35°19'18" A=77.06' | ⑬ R=15.00' Δ=90°00'00" A=23.56' | ㉒ R=38.00' Δ=49°57'56" A=33.13' | ㉖ R=112.00' Δ=45°00'00" A=87.96' |
| ④ R=25.00' Δ=28°41'07" A=12.52' | ⑭ R=25.00' Δ=90°00'00" A=61.26' | ㉓ R=75.00' Δ=18°56'28" A=24.79' | ㉗ R=124.00' Δ=45°00'00" A=97.39' |
| ⑤ R=25.00' Δ=28°41'07" A=12.52' | ⑮ R=15.00' Δ=90°00'00" A=23.56' | ㉔ R=50.00' Δ=90°04'46" A=78.61' | ㉘ R=124.00' Δ=45°00'00" A=97.39' |
| ⑥ R=25.00' Δ=90°00'00" A=39.27' | ⑯ R=39.00' Δ=90°00'00" A=61.26' | ㉕ R=15.00' Δ=90°00'00" A=23.56' | ㉙ R=112.00' Δ=45°00'00" A=87.96' |
| ⑦ R=37.00' Δ=90°00'00" A=58.12' | ⑰ R=22.67' Δ=180°00'00" A=71.22' | ㉖ R=38.00' Δ=90°00'00" A=61.26' | ㉚ R=100.00' Δ=45°00'00" A=78.54' |
| ⑧ R=49.00' Δ=45°00'00" A=76.97' | ⑱ R=62.00' Δ=45°00'00" A=48.69' | ㉗ R=50.00' Δ=89°55'15" A=78.47' | ㉛ R=124.00' Δ=13°30'53" A=29.25' |
| ⑨ R=40.00' Δ=44°55'15" A=31.36' | ㉚ R=50.00' Δ=45°00'00" A=39.27' | ㉘ R=15.00' Δ=135°04'45" A=35.36' | ㉜ R=112.00' Δ=14°59'41" A=29.31' |
| ⑩ R=52.00' Δ=44°55'15" A=40.77' | ㉛ R=50.00' Δ=44°55'15" A=39.27' | ㉙ R=25.00' Δ=89°55'14" A=39.24' | |

SUBDIVISION *Meridiana*
 BOOK 47 PAGE 166
 FLOOD ZONE B FLOOD MAP # 240B
 QUAD # 54 ZONING RS
 SE PUD ZIP CODE 33433
 PUD NAME *Palm Pointe 2*

0211-316
47/166
Darby and Way, Inc.
 PROFESSIONAL SURVEYORS AND ENGINEERS

MERIDIANA AT BOCA POINTE PLAT II



FLORIDA'S TURNPIKE

MERIDIANA AT BOCA POINTE
 PLAT I
 (PB. 46, PG. 54, P.B.C.R.)

S.W. COR. TRACT
 L BOCA POINTE
 NO. 1 (PB. 42,
 PG. 142 P.B.C.R.)