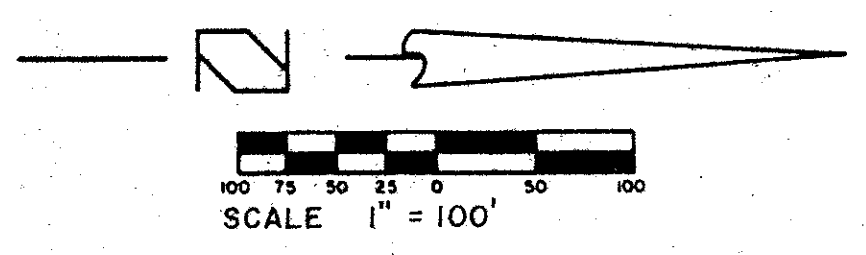


"A PLANNED UNIT DEVELOPMENT"  
**BREAKERS WEST PLAT NO. 5**

PALM BEACH COUNTY FLORIDA  
 SHEET 4 OF 4 SHEETS

**HUTCHEON ENGINEERS**  
 INCORPORATED  
 CIVIL ENGINEERS & SURVEYORS  
 BELLE GLADE WEST PALM BEACH STUART



DRAWING NUMBER  
**48/19**

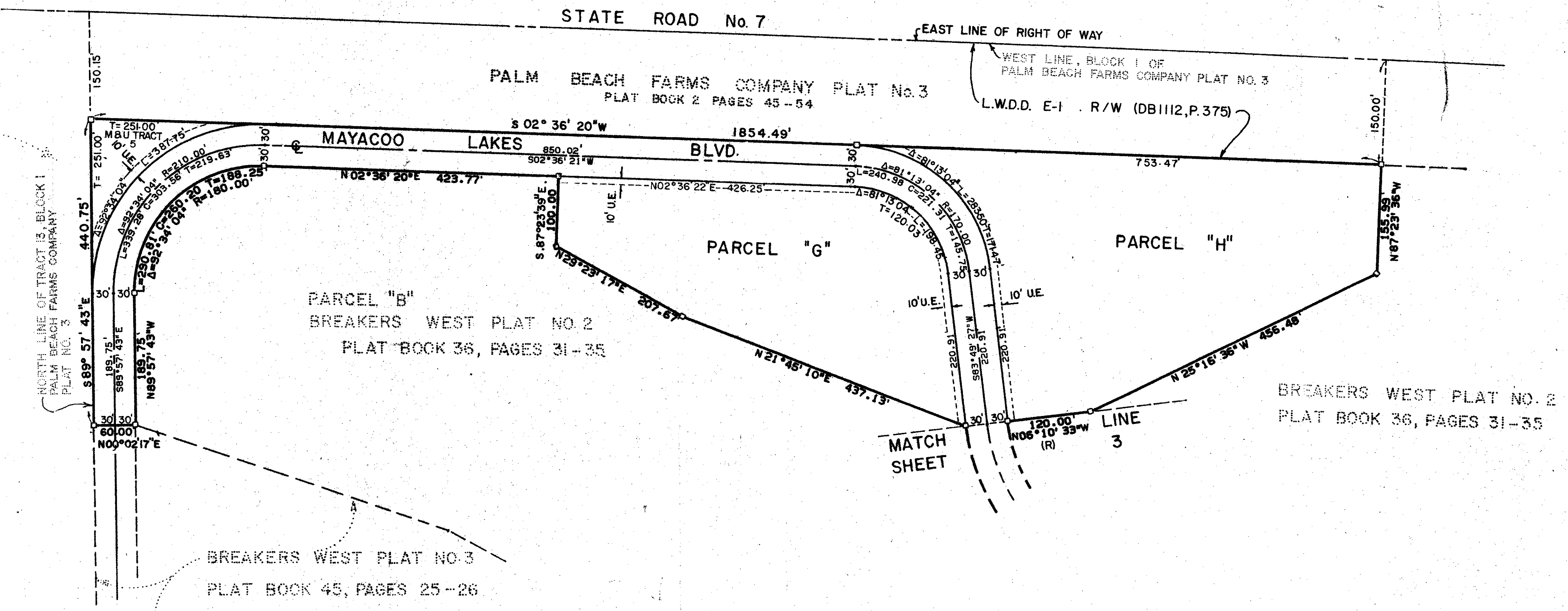
DRAWING NUMBER

DRAWING NUMBER

DRAWING NUMBER

PLAN HOLD CORPORATION • IRVINE, CALIFORNIA

TRACT 13, BLOCK 1  
 PALM BEACH FARMS COMPANY PLAT NO. 3  
 P.B. 2, PAGES 45-54



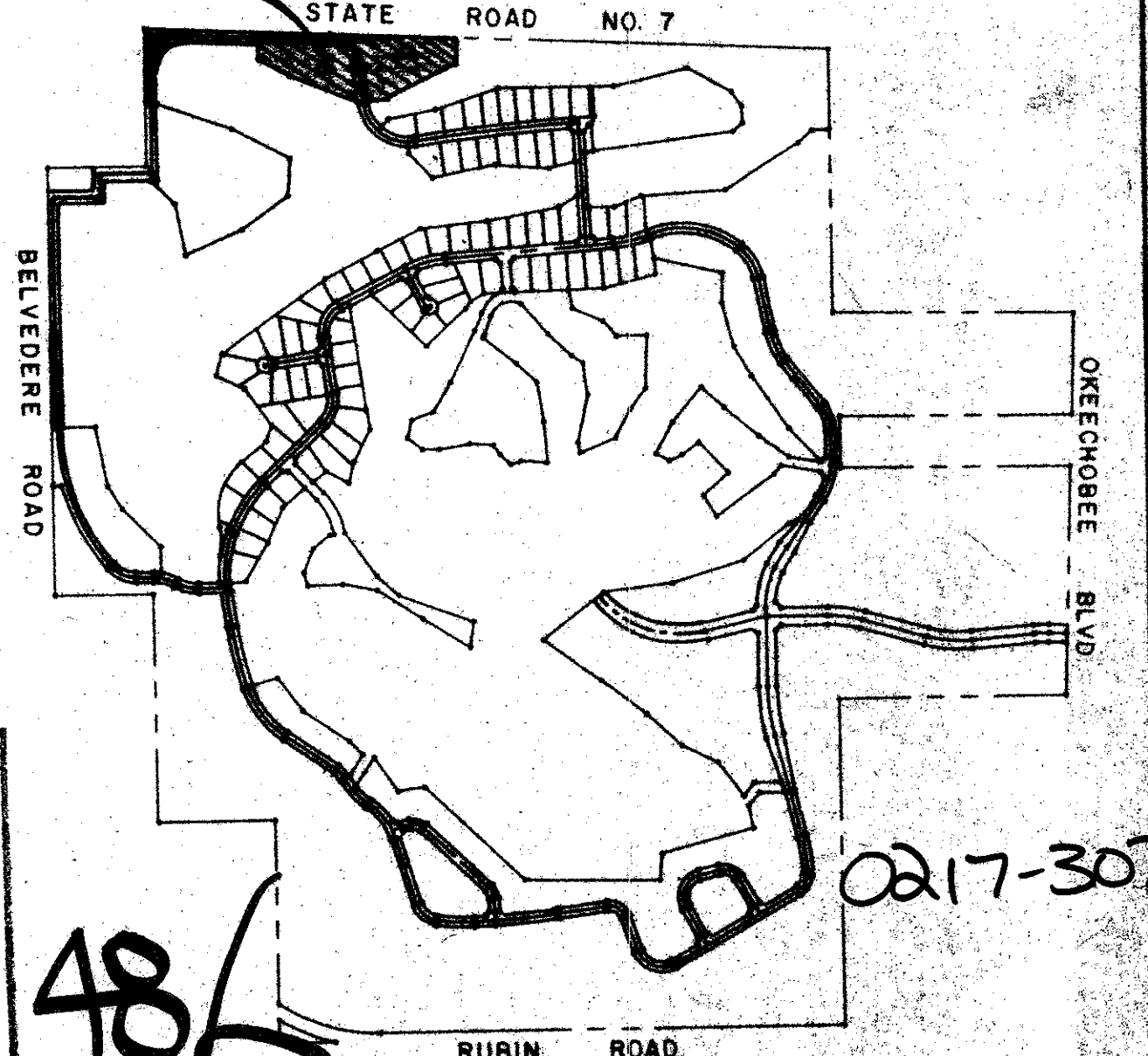
**LEGEND**

- DENOTES SET P.R.M. (PERMANENT REFERENCE MONUMENT)
- DENOTES FOUND P.R.M. (PERMANENT REFERENCE MONUMENT) \*1413
- (R) DENOTES RADIAL LINE
- ⊙ DENOTES CENTER LINE
- U.E. DENOTES UTILITIES EASEMENT
- D.E. DENOTES DRAINAGE EASEMENT
- L.A.E. DENOTES LIMITED ACCESS EASEMENT
- C.B. DENOTES CHORD BEARING
- DENOTES SET P.C.P.
- P.O.B. DENOTES POINT OF BEGINNING
- M&U. DENOTES MAINTENANCE AND UTILITY

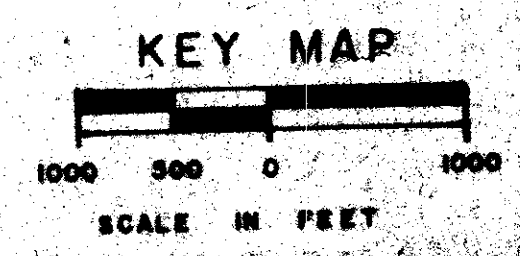
**SURVEYOR'S NOTES**

1. NO BUILDINGS OR ANY KIND OF CONSTRUCTION SHALL BE PLACED ON UTILITY OR DRAINAGE EASEMENTS.
2. NO STRUCTURES, TREES OR SHRUBS SHALL BE PLACED ON DRAINAGE EASEMENTS.
3. APPROVAL OF LANDSCAPING ON UTILITY EASEMENTS OTHER THAN WATER OR SEWER SHALL BE ONLY WITH APPROVAL OF ALL UTILITIES OCCUPYING SAME.
4. BEARINGS SHOWN HEREON ARE BASED ON AN ASSUMED BEARING ON N. 89°57'43" W. FOR THE NORTH LINE OF TRACT 13, BLOCK 1, PALM BEACH FARMS COMPANY, PLAT NO. 3.
5. PARCELS "G" AND "H" AS SHOWN HEREON MUST BE REPLATTED PRIOR TO DEVELOPMENT OF SAID PARCELS "G" AND "H".

**THIS SHEET**



SUBDIVISION \* *Breakers West #5*  
 BOOK 48 PAGE 7  
 FLOOD ZONE E FLOOD MAP \* 154  
 QUAD \* 44 ZONING  
 SE ZIP CODE \* 33111  
 PUD NAME



**BREAKERS WEST #5**