

48/36

DRAWING NUMBER

DRAWING NUMBER

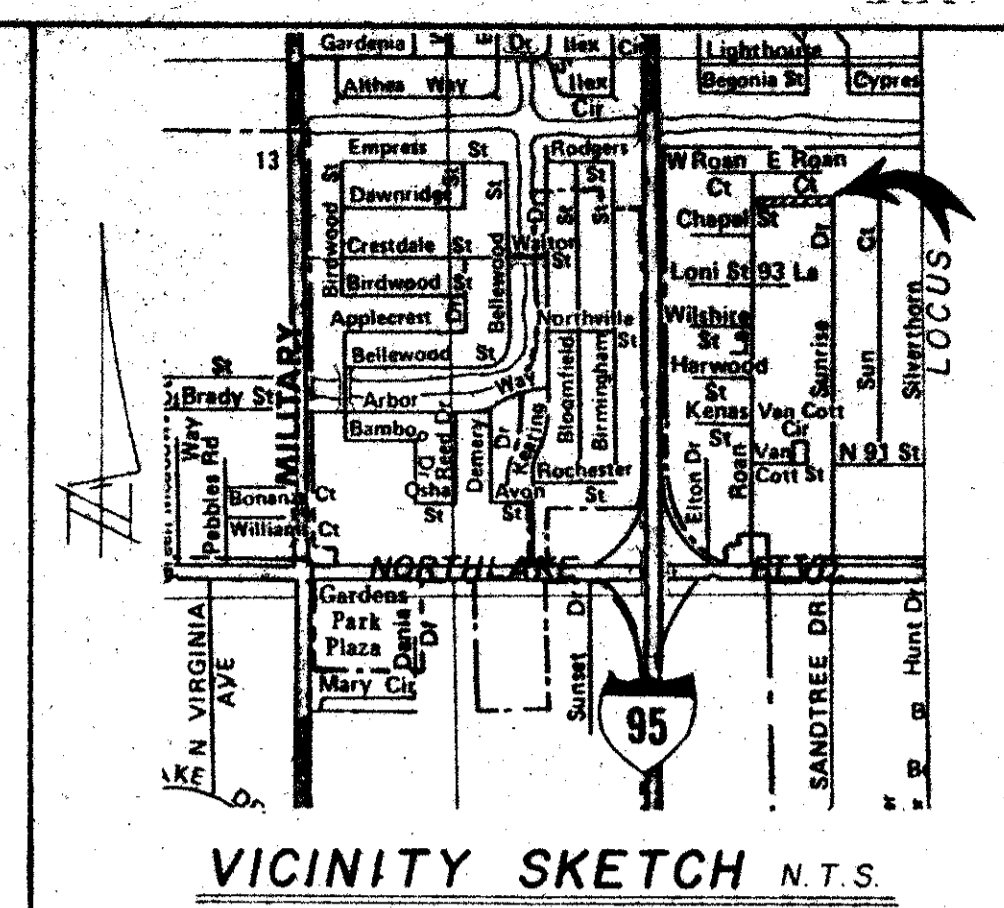
DRAWING NUMBER

PLAT OF

PARK LANE VILLAS

LYING IN THE SOUTHWEST QUARTER OF SECTION 18, TOWNSHIP 42 SOUTH,
RANGE 43 EAST, PALM BEACH COUNTY, FLORIDA

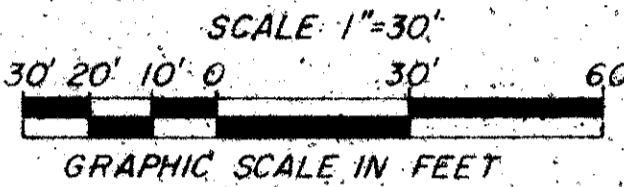
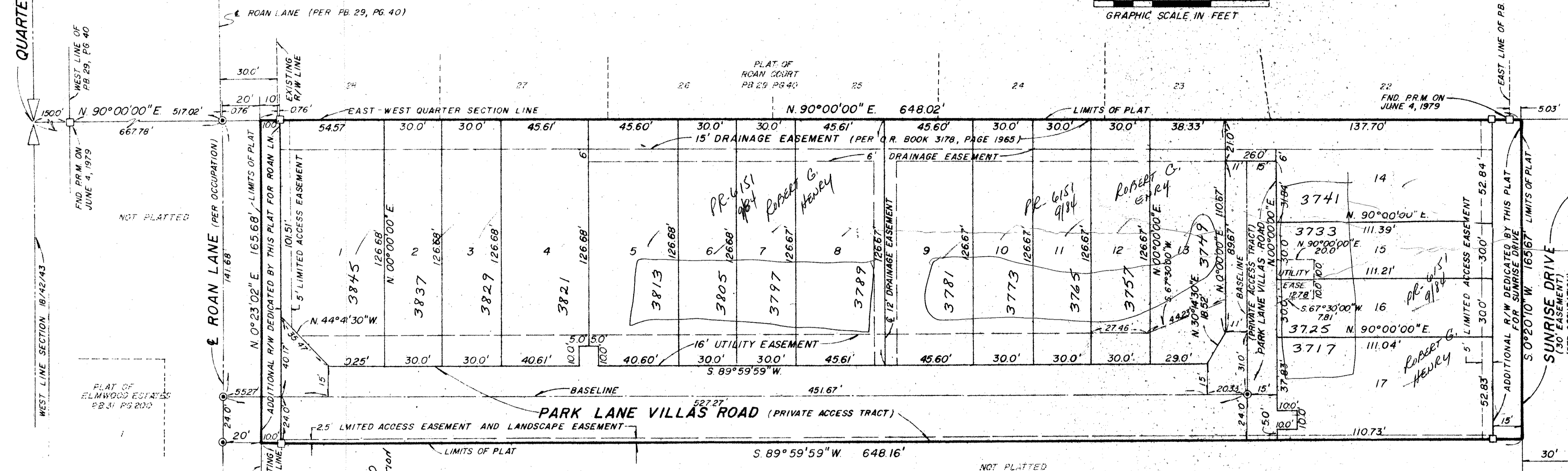
MAY, 1984
SHEET 2 OF 2



36

STATE OF FLORIDA
COUNTY OF PALM BEACH
THIS PLAT WAS FILED FOR RECORD AT
M. THIS DAY
OF 1983,
AND DULY RECORDED IN PLAT BOOK
ON PAGE
JOHN B. DUNKLE, CLERK OF THE
CIRCUIT COURT.
BY: _____, D.C.

QUARTER SECTION CORNER



SUBDIVISION * Park Lane Villas
BOOK 49 PAGE 36
FLOOD ZONE 8 FLOOD MAP # 1300
QUAD # 13 ZONING RM
SE No ZIP CODE 33413
PUD NAME Park Lane Villas

0397-000

PLAT OF
PARK LANE VILLAS
KENNETH L. SCRAPE, INC.
PROFESSIONAL LAND SURVEYORS
LAKE PARK, FL., PH. 844-6048
FIELD: R. McMILLEN CF: JF-15 DC: 5 JOB NO: J83-89
OFFICE: ANNE DATE: APRIL 9, 1984 DWG. NO: C83-101
CK'D: K.S. FB: L.P. PG: 70 SHEET 2 OF 2

NOTES

- NO BUILDINGS OR ANY KIND OF CONSTRUCTION SHALL BE PLACED ON UTILITY AND/OR DRAINAGE EASEMENTS.
- NO STRUCTURES, TREES OR SHRUBS SHALL BE PLACED ON DRAINAGE EASEMENTS.
- APPROVAL OF LANDSCAPING ON UTILITY EASEMENTS OTHER THAN WATER AND SEWER SHALL BE ONLY WITH THE APPROVAL OF ALL UTILITIES OCCUPYING SAME.
- BEARINGS AS SHOWN HEREON ARE BASED ON AN ASSUMED BEARING OF NORTH 90°00'00" EAST ALONG THE EAST-WEST QUARTER SECTION LINE OF SECTION 18, TOWNSHIP 42 SOUTH, RANGE 43 EAST, PALM BEACH COUNTY, FLORIDA AND ALL OTHER BEARINGS ARE RELATIVE THERETO.

LEGEND

- = INDICATES PERMANENT REFERENCE MONUMENT (P.R.M.).
- = INDICATES PERMANENT CONTROL POINT (P.C.P.).

THIS INSTRUMENT WAS PREPARED BY KENNETH L. SCRAPE, AT THE OFFICE OF KENNETH L. SCRAPE, INC., 1133 OLD DIXIE HIGHWAY, SUITE 8, LAKE PARK, FLORIDA.

48/36

PLAN-HOLD CORPORATION • IRVINE, CALIFORNIA
REGISTERED PROFESSIONAL SURVEYOR