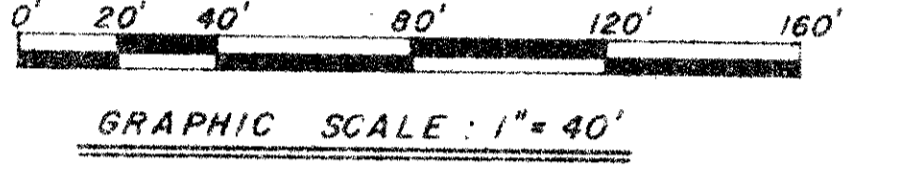
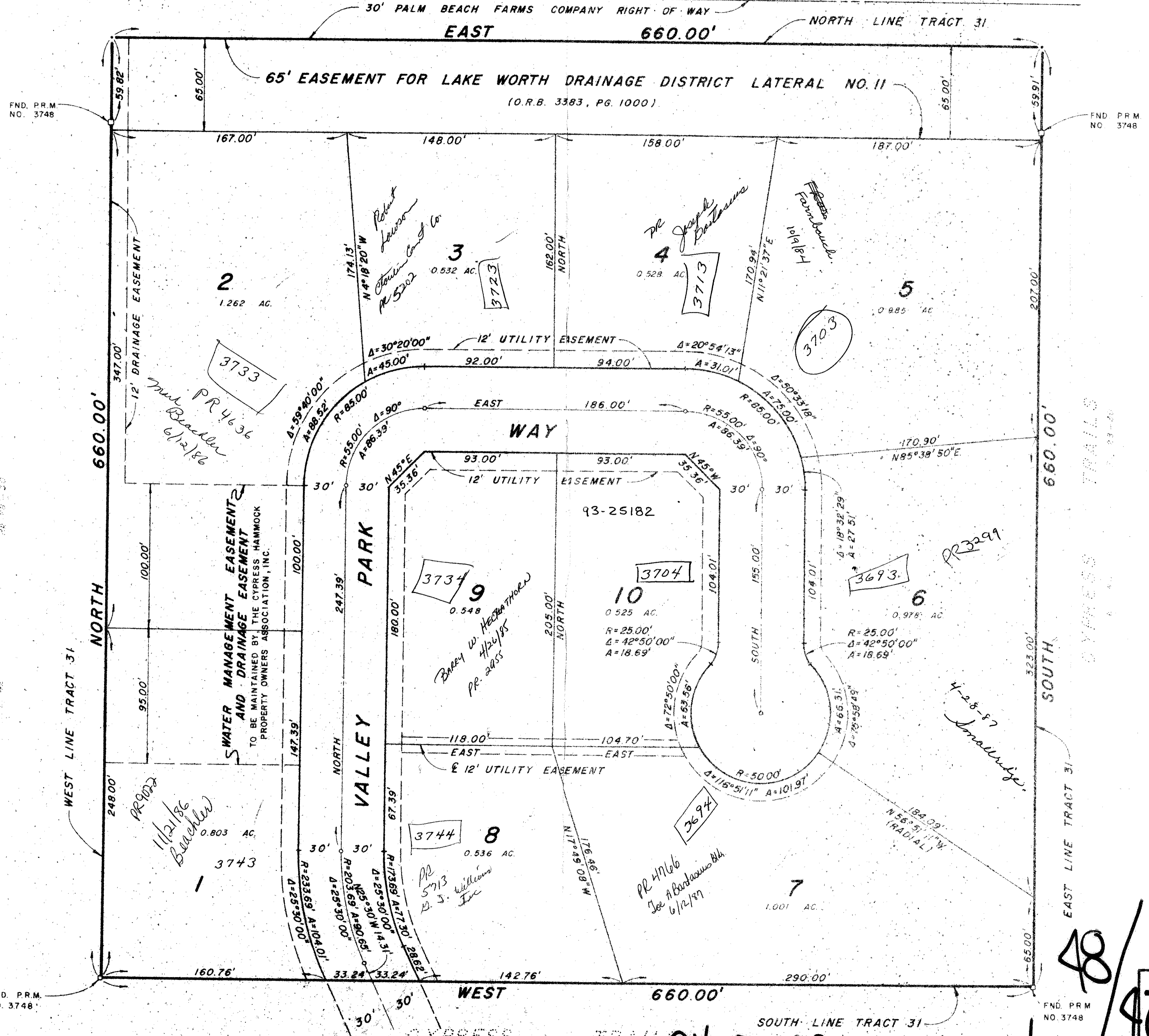


# CYPRESS HAMMOCK

FEBRUARY, 1984

SHEET 2 OF 2

STATE OF FLORIDA  
 COUNTY OF PALM  
 This Plat was filed for  
 \_\_\_ M. this \_\_\_ day of  
 and duly recorded in Pl  
 on Page \_\_\_  
 John B. Dunkle, Clerk C  
 By \_\_\_



SUBDIVISION: Cypress Hammock  
 BOOK: 47 PAGE: 47  
 FLOOD ZONE: E FLOOD MAP #  
 DEED: 118 LINDSEY RT  
 SR: No 118  
 PUD NAME: CYPRESS HAMMOCK

THIS INSTRUMENT WAS PREPARED BY KENT W. EWING, JR.  
 IN THE OFFICE OF EWING AND SHIRLEY, INC.  
 5767 LAKE WORTH ROAD  
 SUITE 118  
 LAKE WORTH, FLORIDA 33469

0394-001  
 EWING AND SHIRLEY, INC.  
 land surveyors and planners

MICHAEL B. SCHORAH  
 & ASSOCIATES, INC.  
 ENGINEERS • PLANNERS • DEVELOPMENT CONSULTANTS

TEL (305) 968-0080  
 1850 FOREST HILL BLVD. SUITE 205  
 WEST PALM BEACH, FLORIDA 33406

DRAWING NUMBER  
 48/47

DRAWING NUMBER

DRAWING NUMBER

DRAWING NUMBER

48/47

CYPRESS HAMMOCK