

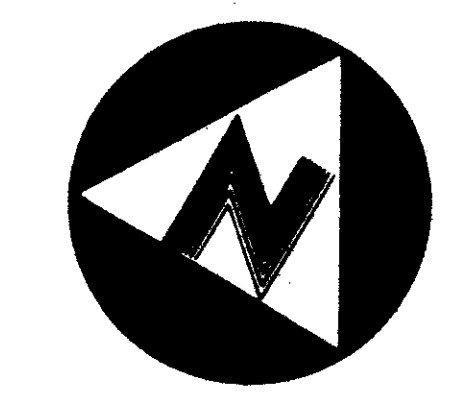
LE LAC - PLAT 2

May, 1984

Sheet 2 of 2

STATE OF FLORIDA
COUNTY OF PALM BEACH
THIS PLAT WAS FILED FOR
RECORD AT _____ DAY OF
THIS _____, AD, 1984 AND
DULY RECORDED IN PLAT BOOK
ON PAGES _____ AND

JOHN B. DUNKLE, CLERK
CIRCUIT COURT
BY: _____ DC



GRAPHIC SCALE:
0' 50' 100' 150'
SCALE: 1" = 50'

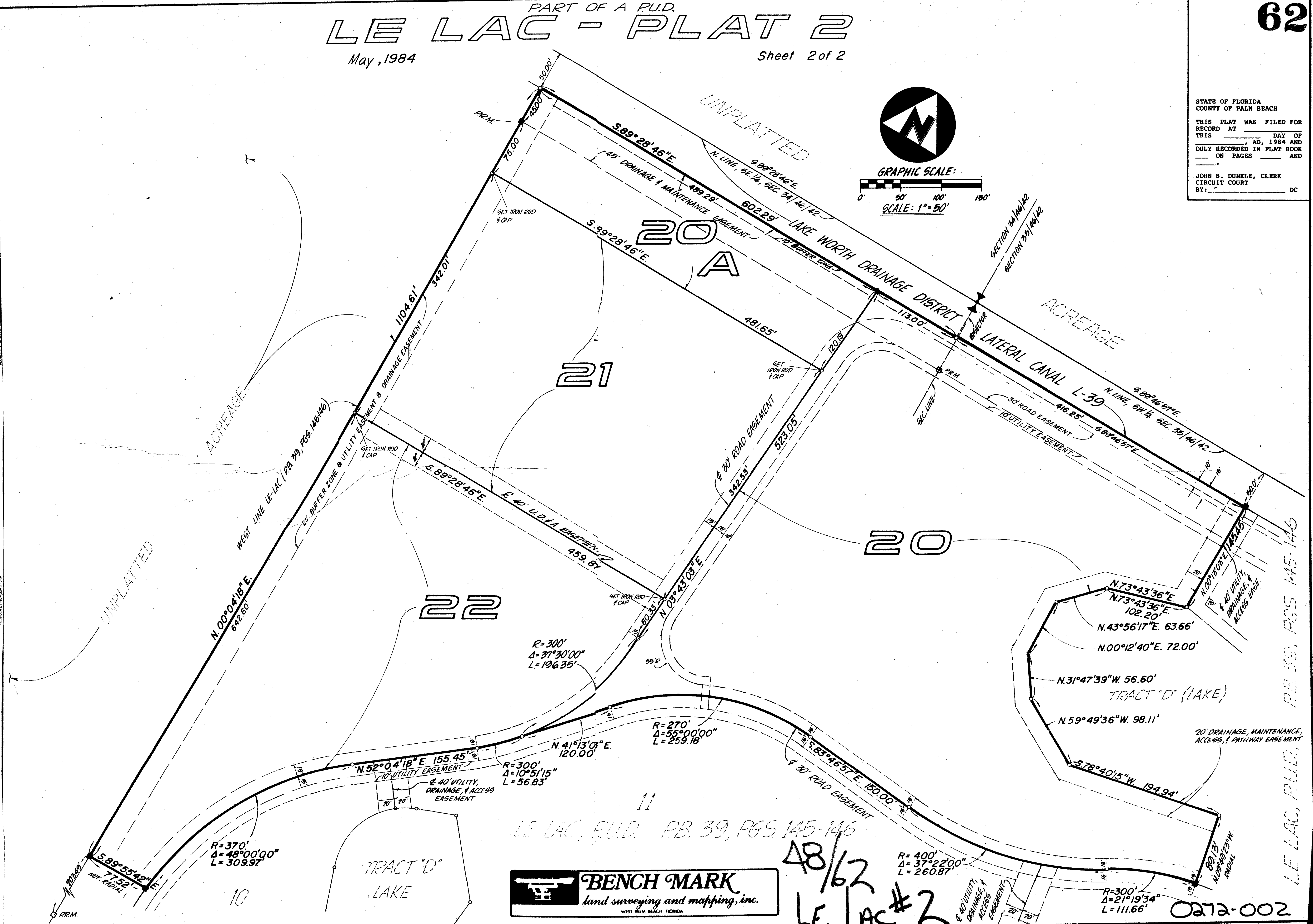
DRAWING NUMBER
48/62

DRAWING NUMBER

DRAWING NUMBER

DRAWING NUMBER

PLAN HOLD CORPORATION • IRVINE, CALIFORNIA
RECORDED BY NUMBER 07348



BENCH MARK
land surveying and mapping, inc.
WEST PALM BEACH, FLORIDA

48/62
LE LAC #2

0212-002