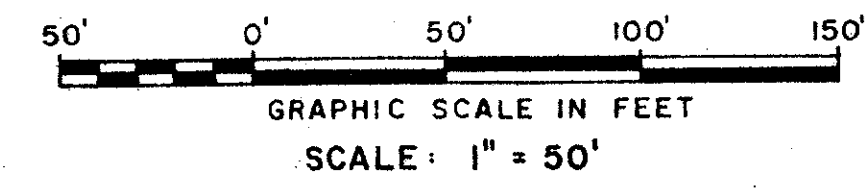


PLAT NO. 2 WESTWOOD GARDENS (A P.U.D.)

LYING IN SECTION 35, TOWNSHIP 41 SOUTH, RANGE 42 EAST
PALM BEACH COUNTY, FLORIDA
SHEET 3 OF 3
APRIL, 1984

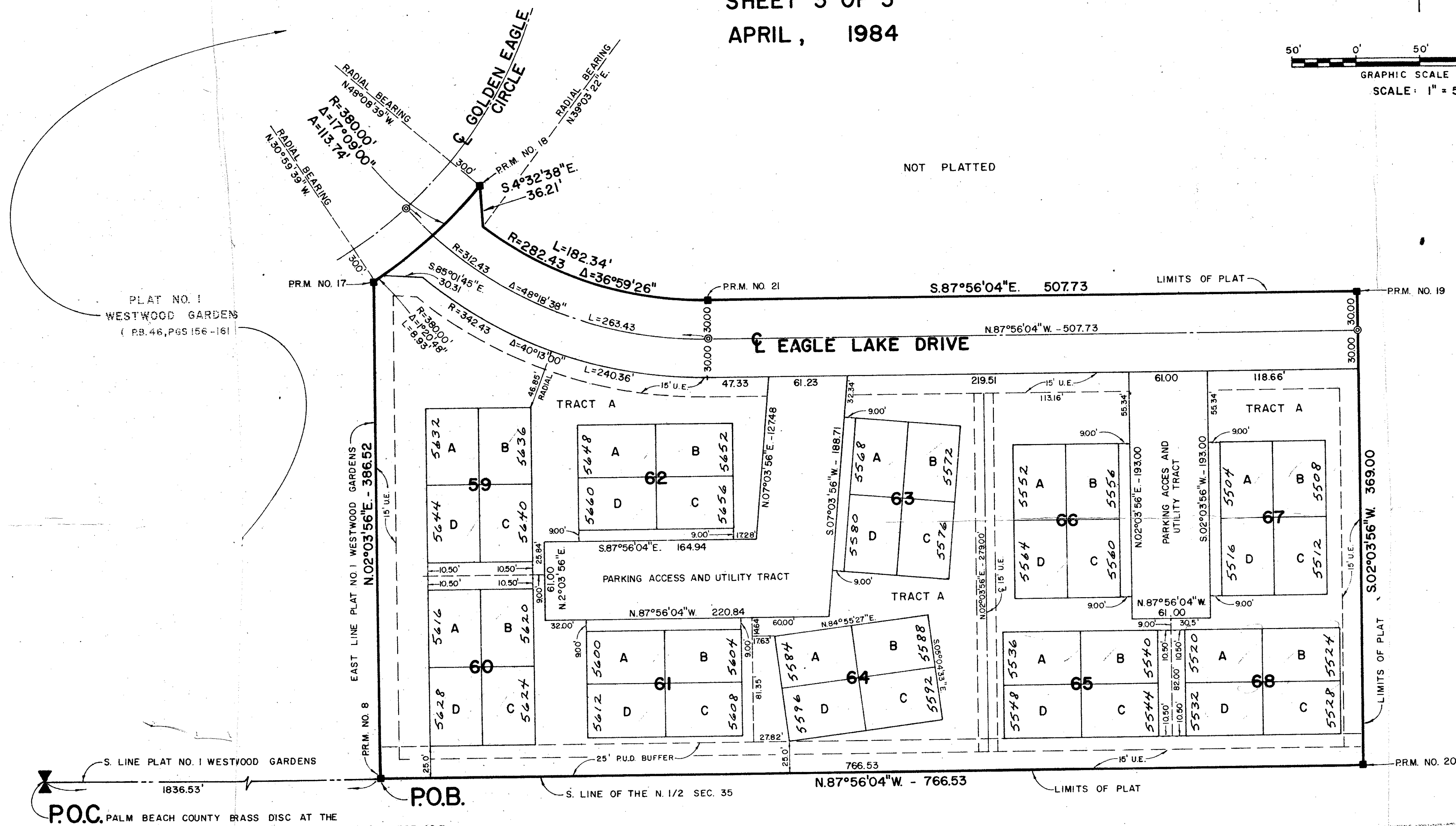


DRAWING NUMBER
48/74

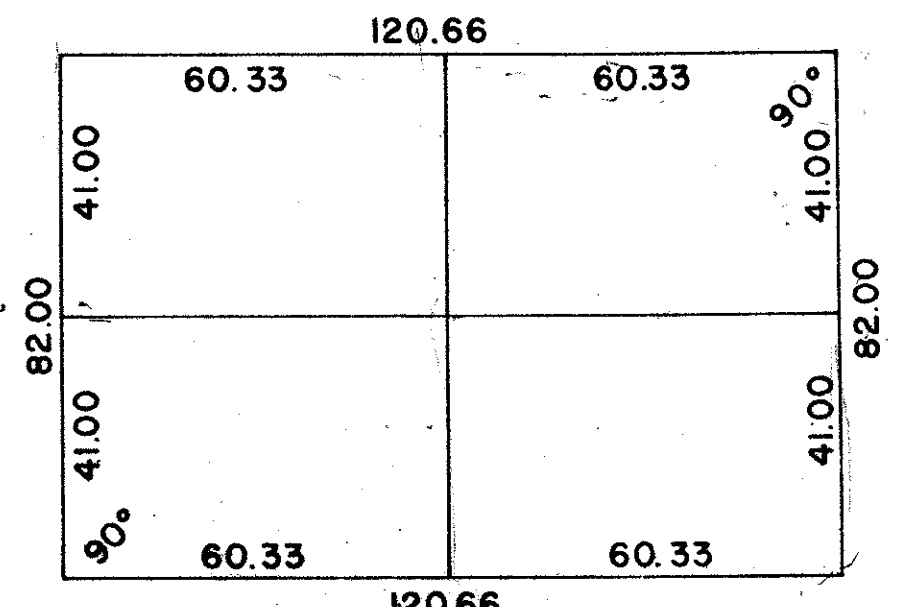
DRAWING NUMBER

DRAWING NUMBER

DRAWING NUMBER



P.O.C. PALM BEACH COUNTY BRASS DISC AT THE SW CORNER OF THE N1/4 QUARTER SEC. 35, TWP. 41 S., RGE. 42 E.



- SURVEYOR'S NOTES:**
1. ALL LOT TIES ARE 90° OFF REFERENCE LINES UNLESS SHOWN OTHERWISE.
 2. DEED BOOK 47, PAGE 79, PUBLIC RECORDS OF PALM BEACH COUNTY, SETS FORTH EASEMENTS OF UNSPECIFIED WIDTH ALONG SECTION LINES, QUARTER SECTION LINES AND QUARTER-QUARTER SECTION LINES FOR ROAD AND/OR DRAINAGE PURPOSES IF SUCH PURPOSES ARE DEEMED NECESSARY BY THE MODEL LAND COMPANY OR PUBLIC AUTHORITIES.

0379.002
WESTWOOD GARDENS
PUD
SECTION 35
TOWNSHIP 41 S
RANGE 42 E
P.L.S. 12/11/83
R.S. 12/11/83
PUD 12/11/83
WESTWOOD GARDENS

THIS INSTRUMENT PREPARED BY:
GEORGE C. ZIGLIANTI, P.L.S.
WILLIAM G. WALLACE, INC.
CONSULTING ENGINEERS AND LAND SURVEYORS
9176 ALTERNATE A1A
LAKE PARK, FLORIDA 33410

**PLAT NO. 2
WESTWOOD GARDENS
(A P.U.D.)**

WILLIAM G. WALLACE, INC.		
CONSULTING ENGINEERS, LAND PLANNERS & SURVEYORS		
9176 ALTERNATE A1A, LAKE PARK, FL. 33410 • 305/842-4233		
3241 SW MAPLE RD. PALM CITY PLAZA, PALM CITY, FL. 32940 • 305/283-0309		
FIELD: J.H.	JOB NO.: 82-756	F.B. PG.
OFFICE: R.M.R.	DATE: MARCH, 1984	DWG. NO.: 82-756 "A"
CK'D: G.C.Z.	REF:	SHEET 3 OF 3