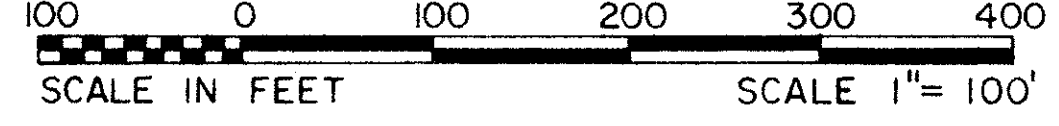


JONATHAN'S LANDING PLAT EIGHT P.U.D.

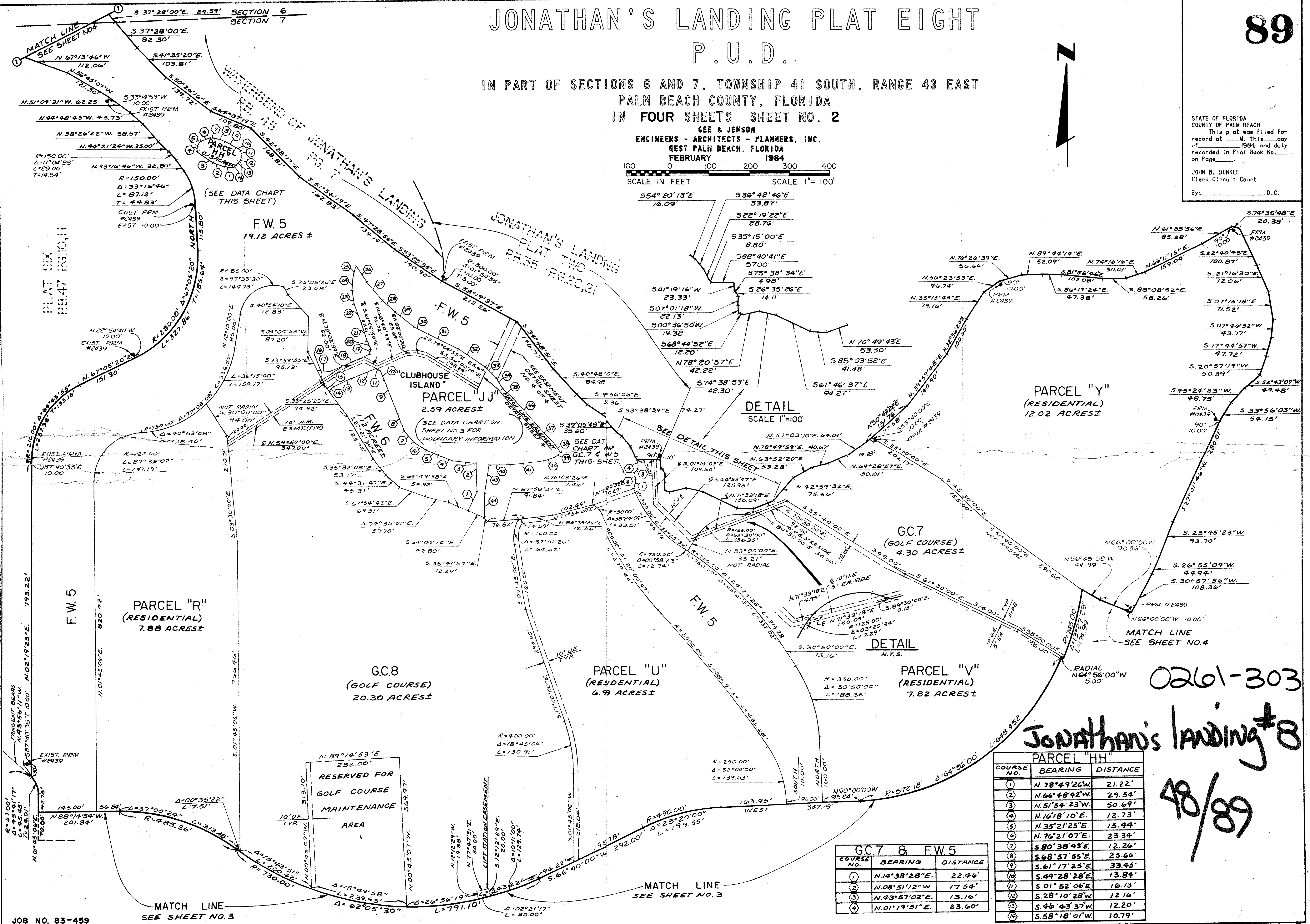
89

IN PART OF SECTIONS 6 AND 7, TOWNSHIP 41 SOUTH, RANGE 43 EAST
PALM BEACH COUNTY, FLORIDA
IN FOUR SHEETS SHEET NO. 2

GEE & JENSON
ENGINEERS - ARCHITECTS - PLANNERS, INC.
WEST PALM BEACH, FLORIDA
FEBRUARY 1984



STATE OF FLORIDA
COUNTY OF PALM BEACH
This plat was filed for
record at _____ M. this _____ day
of _____ 1984 and duly
recorded in Plat Book No. _____
on Page _____
JOHN B. DUNKLE
Clerk Circuit Court
By: _____ D.C.



DETAIL
SCALE 1"=100'

DETAIL
N.T.S.

GC.7 & F.W.5

COURSE NO.	BEARING	DISTANCE
①	N.14°38'28"E.	22.46'
②	N.08°51'12"W.	17.54'
③	N.43°57'02"E.	13.16'
④	N.01°19'51"E.	23.60'

PARCEL "HH"

COURSE NO.	BEARING	DISTANCE
①	N.78°49'26"W.	21.22'
②	N.66°48'42"W.	29.54'
③	N.51°54'23"W.	50.69'
④	N.16°18'10"E.	12.73'
⑤	N.35°21'25"E.	15.44'
⑥	N.76°21'07"E.	23.34'
⑦	S.80°38'43"E.	12.26'
⑧	S.68°57'55"E.	25.66'
⑨	S.61°17'25"E.	33.45'
⑩	S.49°28'28"E.	13.84'
⑪	S.01°52'06"E.	16.13'
⑫	S.28°10'28"W.	12.16'
⑬	S.46°43'37"W.	12.20'
⑭	S.58°18'01"W.	10.79'

0261-303

Jonathan's Landing #8

48/89

DRAWING NUMBER
48/89

DRAWING NUMBER

DRAWING NUMBER

DRAWING NUMBER