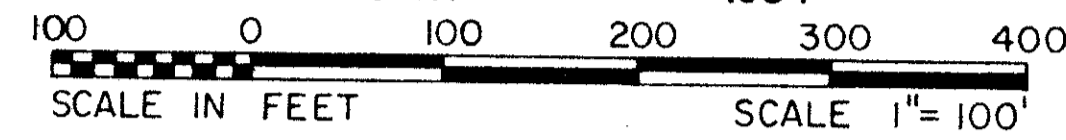


JONATHAN'S LANDING PLAT EIGHT P.U.D.

IN PART OF SECTIONS 6 AND 7, TOWNSHIP 41 SOUTH, RANGE 43 EAST
PALM BEACH COUNTY, FLORIDA
IN FOUR SHEETS SHEET NO. 3

GEE & JENSON
ENGINEERS - ARCHITECTS - PLANNERS, INC.
WEST PALM BEACH, FLORIDA
FEBRUARY 1984



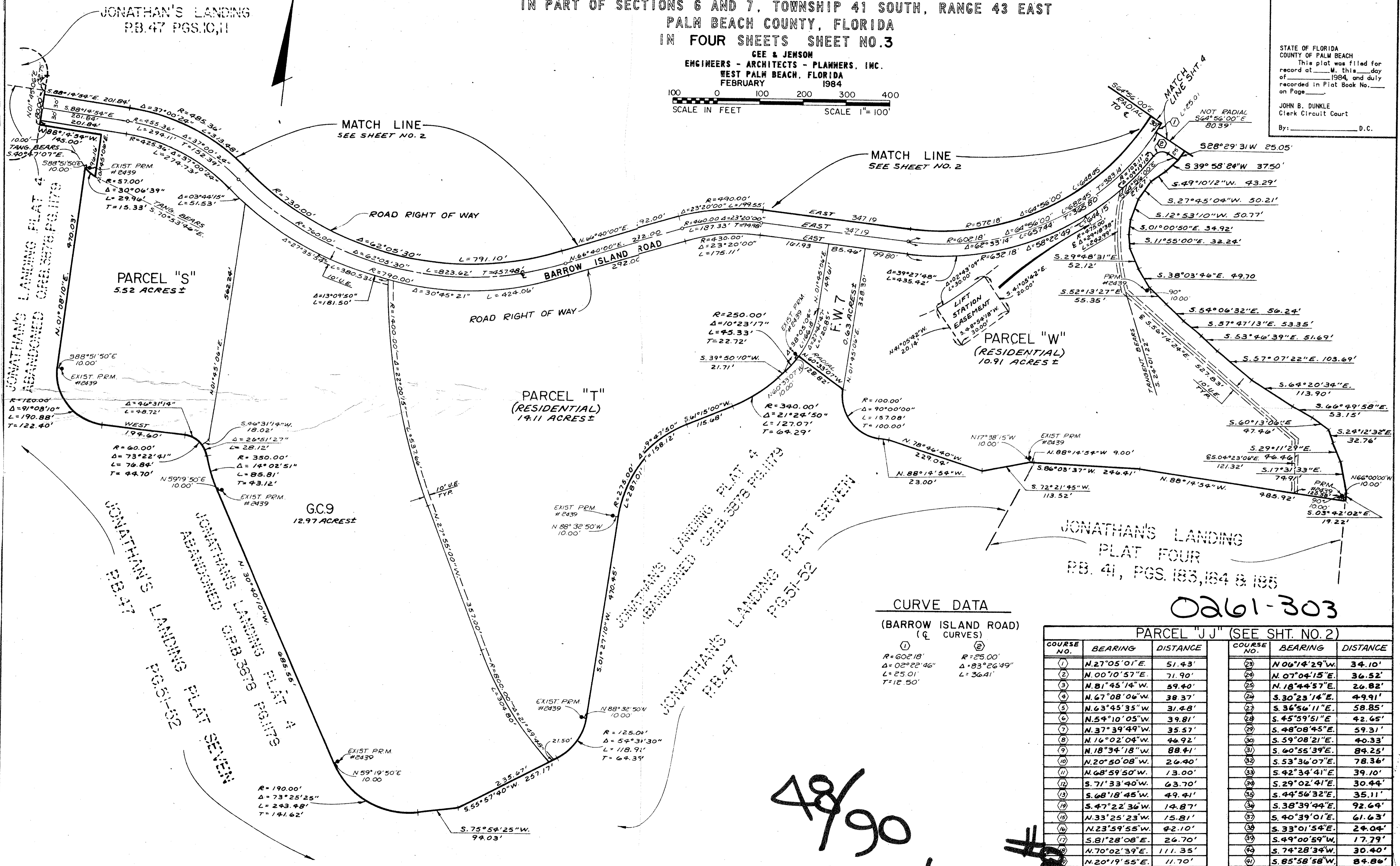
STATE OF FLORIDA
COUNTY OF PALM BEACH
This plat was filed for
record at _____ M. this _____ day
of _____ 1984, and duly
recorded in Plat Book No. _____
on Page _____
JOHN B. DUNKLE
Clerk Circuit Court
By: _____ D.C.

DRAWING NUMBER
48/90

DRAWING NUMBER

DRAWING NUMBER

DRAWING NUMBER



CURVE DATA
(BARROW ISLAND ROAD)
(C CURVES)

①	R=602.18'	Δ=0°22'46"	L=25.01'	T=12.50'
②	R=250.00'	Δ=83°26'49"	L=36.41'	

PARCEL "J" (SEE SHT. NO. 2)

COURSE NO.	BEARING	DISTANCE	COURSE NO.	BEARING	DISTANCE
1	N.27°05'01"E	51.43'	23	N.06°14'29"W	34.10'
2	N.00°10'57"E	71.90'	24	N.07°04'15"E	36.52'
3	N.81°45'14"W	59.40'	25	N.18°44'57"E	26.82'
4	N.67°08'06"W	38.37'	26	S.30°23'14"E	49.91'
5	N.63°45'35"W	31.48'	27	S.36°56'11"E	58.85'
6	N.54°10'05"W	39.81'	28	S.45°59'51"E	42.65'
7	N.37°39'49"W	35.57'	29	S.48°08'45"E	59.31'
8	N.16°02'04"W	46.92'	30	S.59°08'21"E	40.33'
9	N.18°34'18"W	88.41'	31	S.60°55'39"E	84.25'
10	N.20°50'08"W	26.40'	32	S.53°36'07"E	78.36'
11	N.68°59'50"W	13.00'	33	S.42°34'41"E	39.10'
12	S.71°33'40"W	63.70'	34	S.29°02'41"E	30.44'
13	S.68°18'45"W	49.41'	35	S.44°56'32"E	35.11'
14	S.47°22'36"W	14.87'	36	S.38°39'44"E	92.64'
15	N.33°25'23"W	15.81'	37	S.40°39'01"E	61.63'
16	N.23°59'55"W	42.10'	38	S.33°01'54"E	24.04'
17	S.81°28'08"E	26.70'	39	S.49°00'59"W	17.79'
18	N.70°02'39"E	111.35'	40	S.74°28'34"W	30.40'
19	N.20°19'55"E	11.70'	41	S.85°58'58"W	84.86'
20	N.20°50'08"W	23.00'	42	N.88°04'03"W	51.84'
21	N.15°28'06"W	48.18'	43	S.10°41'25"W	71.77'
22	N.17°29'42"W	48.95'	44	S.03°05'03"W	60.44'

48/90

Jonathan's Landing