

A PLANNED COMMERCIAL DEVELOPMENT
SUPER 8 CENTER

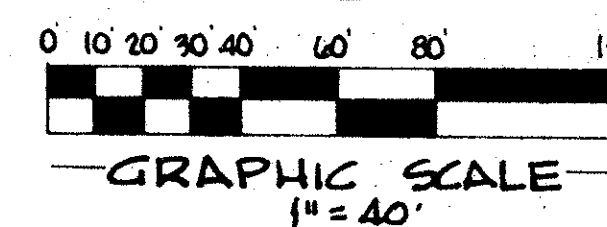
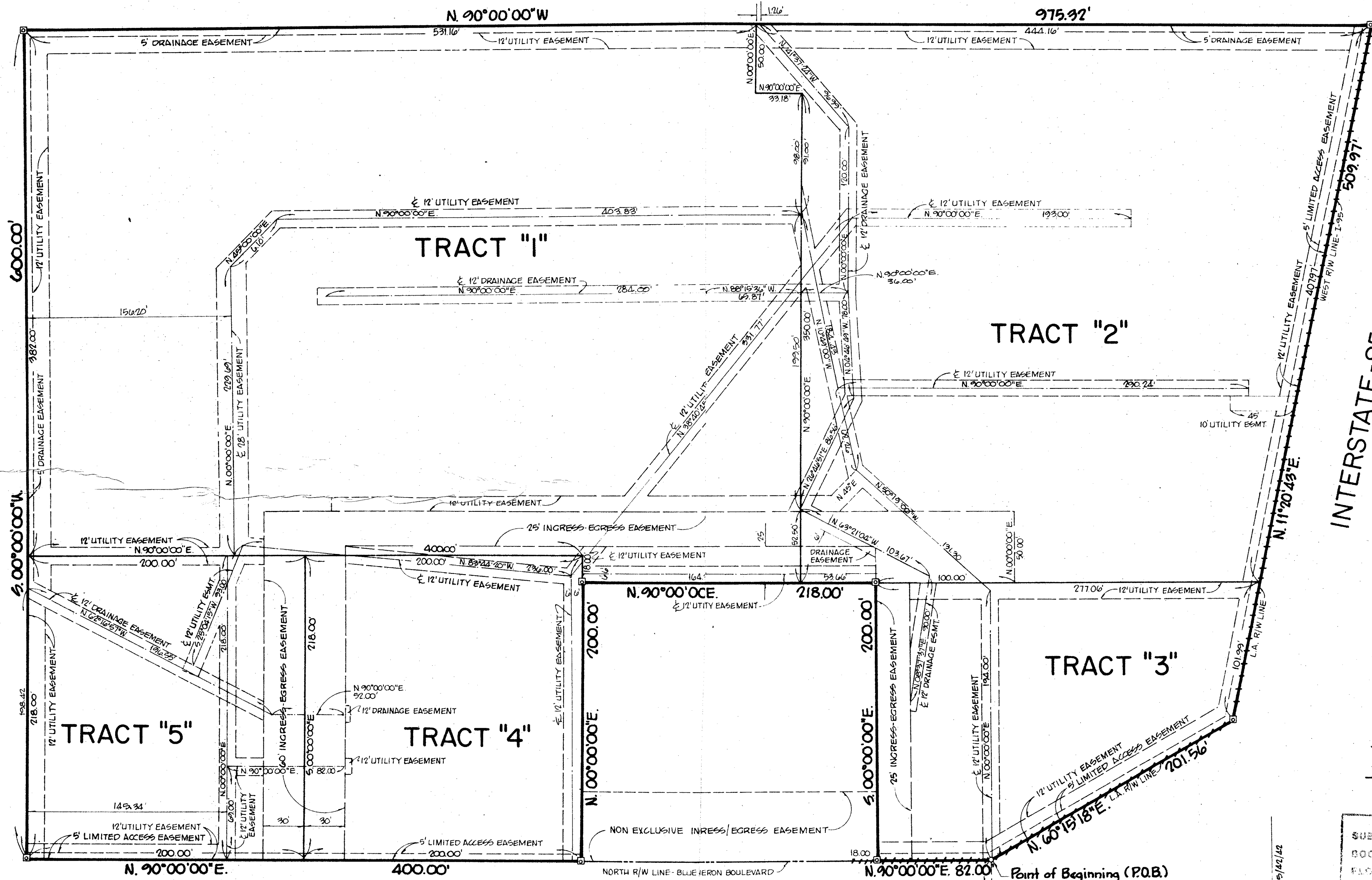
LYING IN SECTION 25, TOWNSHIP 42 S., RANGE 42 E.,
 PALM BEACH COUNTY, FLORIDA
 FEBRUARY, 1984

93

NOT PLATTED

NOT PLATTED

STATE OF FLORIDA
 COUNTY OF PALM BEACH
 THIS PLAT WAS FILED FOR
 RECORD AT _____ M. THIS
 _____ DAY OF _____ A.D.
 1984, AND DULY RECORDED
 IN PLAT BOOK _____ ON
 PAGES _____ AND _____
 JOHN S. DUNKLE, CLERK
 CIRCUIT COURT.
 BY: _____ D.C.



0403-000

LEGEND
 - - - - - LIMITED ACCESS R/W LINE
 [Symbol] DENOTES PERMANENT REFERENCE MONUMENT

25/42/E
 SUBDIVISION * Super 8 Center
 BOOK 48 PAGE 93
 FLOOD ZONE B FLOOD MAP * 1-2
 ROAD # 21 ZONING
 ZIP CODE 33409
 PUB. DATE

CONRAD W. SCHAEFER CONSULTING ENGINEERS INC.
 PALM BEACH COUNTY, FLORIDA
**RECORD PLAT
 SUPER 8 CENTER**

48/93

THIS INSTRUMENT WAS PREPARED BY EARL L. OSGARD, JR.
 IN THE OFFICES OF BENCH MARK LAND SURVEYING AND MAPPING,
 2813 EXCHANGE COURT, WEST PALM BEACH, FLORIDA, 33409
 TELEPHONE: (305) 689-2111

DATE	ELC	710	P-1000
FEB, 84	1" = 40'	APPROVED	FILE NO.
			SHEET OF 2

48/93
 DRAWING NUMBER

DRAWING NUMBER

DRAWING NUMBER

DRAWING NUMBER

PLAN HOLD CORPORATION • IRVINE, CALIFORNIA
 RECORD BY NUMBER 07548