

# WEITZER SUBDIVISION PUD PLAT No. ONE (FORMERLY KNOWN AS SOMERSET AT BOCA)

A REPLAT OF A PORTION OF PALM BEACH FARMS CO. PLAT NO. 3, PB. 2, PG. 45-54 IN THE S.W. 1/4 OF SECTION 6, AND N.W. 1/4 OF SECTION 7 TWP. 47 S., RGE. 42 E.  
PALM BEACH COUNTY, FLORIDA

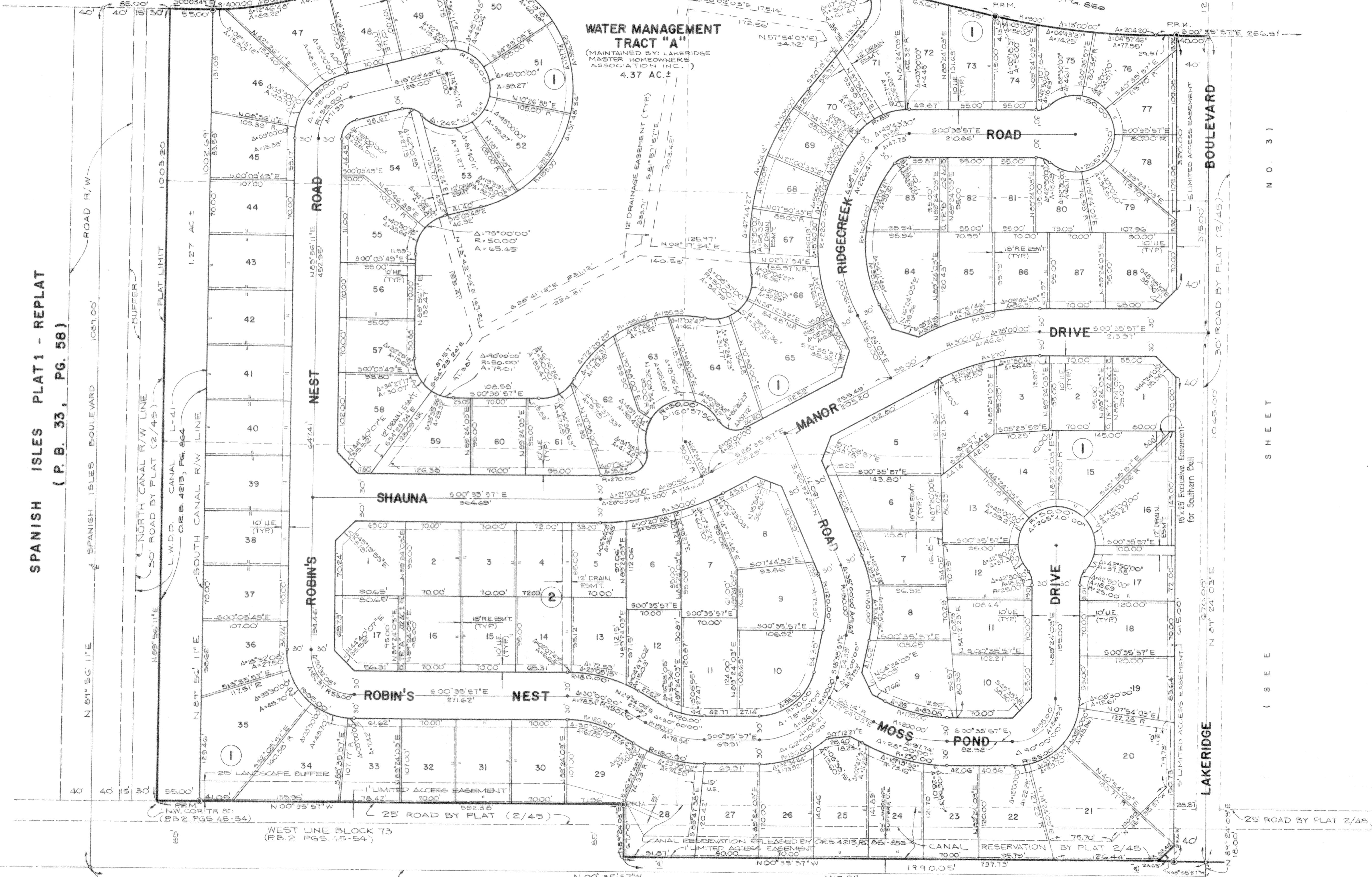
LUDOVICI AND ORANGE CONSULTING ENGINEERS  
CORAL GABLES, FLORIDA

GRAPHIC SCALE  
SCALE: 1" = 60'  
SHEET 2 OF 3

100' L.W.D. CANAL E-1

PALM BEACH FARMS COMPANY PLAT No. 3  
(P.B. 2 PGS. 45-54)

PALM BEACH FARMS COMPANY PLAT No. 3  
(P.B. 2 PGS. 45-54)



SPANISH ISLES PLAT 1 - REPLAT  
(P.B. 33, PG. 58)

(SEE SHEET NO. 3)