

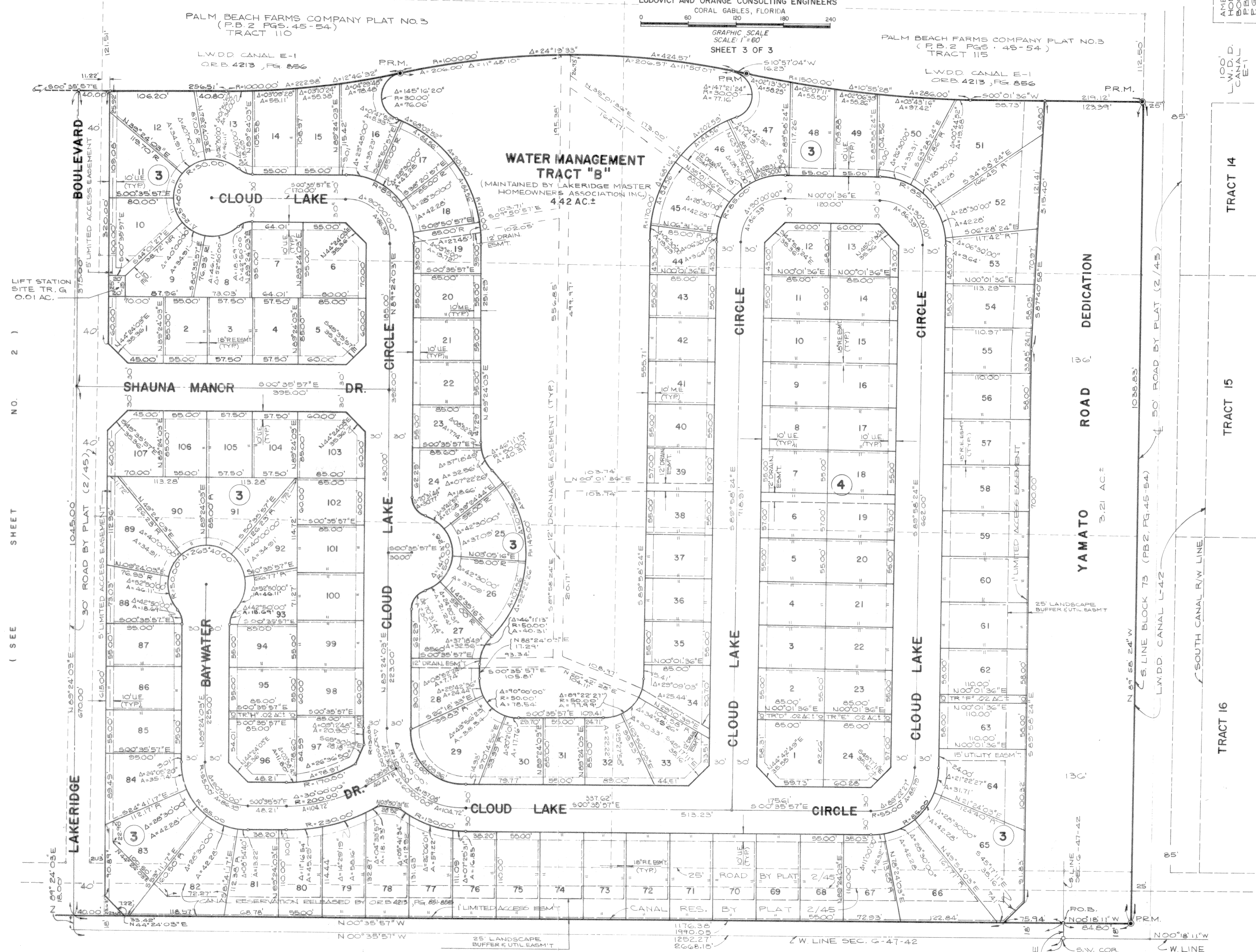
# WEITZER SUBDIVISION PUD PLAT No. ONE (FORMERLY KNOWN AS SOMERSET AT BOCA)

A REPLAT OF A PORTION OF PALM BEACH FARMS CO. PLAT NO. 3, P.B. 2, PG. 45-54 IN THE S.W. 1/4 OF SECTION 6, AND N.W. 1/4 OF SECTION 7 TWP. 47S., RGE. 42 E.

LUDOVICI AND ORANGE CONSULTING ENGINEERS  
CORAL GABLES, FLORIDA

GRAPHIC SCALE  
SCALE: 1" = 60'

SHEET 3 OF 3



( SEE SHEET NO. 2 )

AMERICAN HOMES AT BOCA  
P.B. 2, PG. 45-54  
L.P. 19-98-69

100' W.D.D. CANAL E-1

TRACT 14

TRACT 15

TRACT 16

74

PALM BEACH FARMS CO. PLAT NO. 3 P.B. 2 PG. 45-54

U.S. 441 - STATE ROAD NO. 7