

# RAINBERRY PARK PLAT NO. 1

PART OF RAINBERRY OF WEST BOCA P.U.D.  
SITUATE IN SECTION 19, TOWNSHIP 47 SOUTH, RANGE 42 EAST, PALM BEACH COUNTY, FLORIDA, BEING A REPLAT OF A PORTION OF BLOCK 78, OF THE PALM BEACH FARMS COMPANY'S PLAT NO. 3 (PB 2, P 45-54).  
SHEET 2 OF 2

STATE OF FLORIDA  
COUNTY OF PALM BEACH  
THIS PLAT WAS FILED FOR RECORD AT THIS DAY OF AD, 1984 AND DULY RECORDED IN PLAT BOOK ON PAGES AND  
JOHN B. DUNKLE, CLERK  
CIRCUIT COURT BY: , D.C.

DRAWING NUMBER  
48/106

NO.	DELTA	RADIUS	LENGTH
C1	9° 28' 24"	362.13	59.88
C2	4° 49' 56"	362.13	30.54
C3	23° 58' 28"	362.13	29.33
C4	23° 58' 28"	362.13	55.29
C5	16° 43' 54"	132.34	38.64
C6	18° 02' 21"	250.00	78.71
C7	98° 12' 50"	25.00	16.67
C8	76° 59' 43"	45.00	60.47
C9	53° 06' 05"	45.00	41.71
C10	47° 19' 20"	45.00	37.17
C11	105° 53' 17"	45.00	93.16
C12	3° 58' 54"	45.00	3.13
C13	69° 04' 29"	25.00	30.14
C14	22° 10' 56"	151.00	58.46
C15	15° 54' 57"	151.00	41.95
C16	33° 31' 21"	115.00	67.28
C17	89° 29' 27"	20.00	31.24
C18	34° 32' 06"	42.00	25.32
C19	27° 32' 54"	42.00	20.19
C20	65° 06' 56"	42.00	47.73
C21	31° 09' 34"	42.00	22.84
C22	21° 38' 30"	42.00	15.86
C23	16° 18' 35"	42.00	11.96
C24	36° 30' 30"	42.00	26.76
C25	73° 04' 29"	42.00	53.57
C26	11° 03' 02"	40.00	7.71
C27	25° 21' 06"	40.00	17.70
C28	4° 53' 01"	145.00	12.36
C29	25° 02' 43"	145.00	63.38
C30	7° 04' 29"	145.00	17.90
C31	16° 21' 41"	151.00	43.12
C32	19° 54' 12"	151.00	52.45
C33	9° 54' 25"	25.00	4.32
C34	74° 28' 01"	45.00	58.49
C35	28° 18' 22"	25.00	12.35
C36	36° 57' 17"	45.00	29.02
C37	50° 23' 17"	45.00	39.57
C38	100° 57' 32"	45.00	79.29
C39	69° 04' 31"	25.00	30.14
C40	8° 00' 06"	45.00	7.07
C41	48° 29' 41"	42.00	35.55
C42	48° 25' 21"	108.00	92.12
C43	57° 39' 07"	42.00	42.26
C44	27° 38' 08"	42.00	20.26
C45	27° 06' 19"	42.00	19.87
C46	17° 17' 29"	153.34	46.27
C47	7° 39' 14"	45.00	6.01
C48	47° 26' 18"	45.00	37.26
C49	26° 27' 36"	45.00	20.78
C50	56° 53' 34"	45.00	44.68
C51	9° 56' 22"	271.00	47.01
C52	38° 33' 02"	42.00	28.26
C53	34° 37' 36"	42.00	25.98
C54	9° 32' 43"	271.00	45.15
C55	58° 49' 27"	42.00	43.12
C56	36° 12' 26"	45.00	28.44
C57	69° 04' 31"	25.00	30.14
C58	68° 09' 45"	45.00	53.54
C59	34° 34' 18"	45.00	27.15
C60	31° 29' 24"	45.00	24.73
C61	72° 02' 46"	45.00	60.51
C62	38° 43' 41"	113.90	15.90
C63	41° 34' 39"	113.90	79.10
C64	40° 40' 14"	111.34	79.03
C65	32° 20' 05"	45.00	25.40
C66	125° 53' 34"	42.00	92.28
C67	13° 55' 29"	130.00	31.59
C68	15° 31' 05"	45.00	12.19
C69	132° 00' 14"	42.00	96.76
C70	7° 28' 31"	45.00	5.87

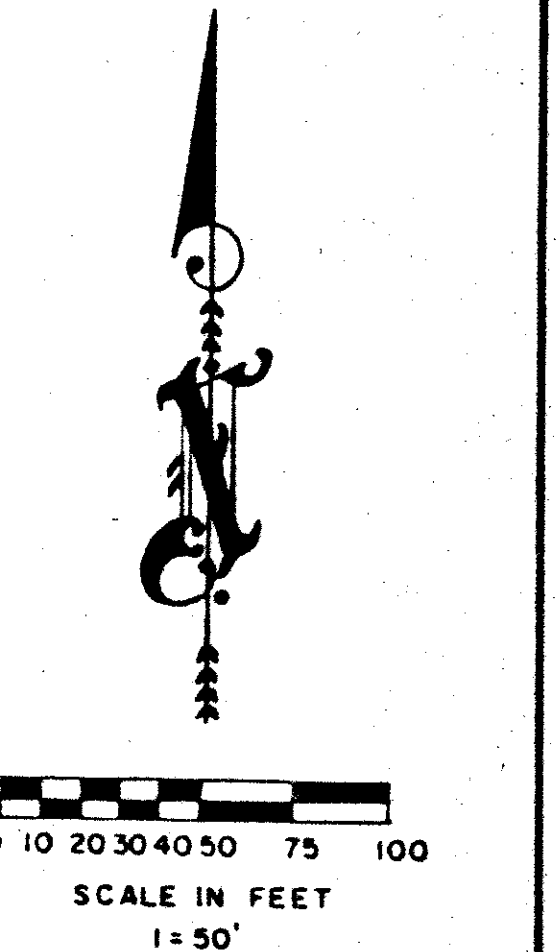
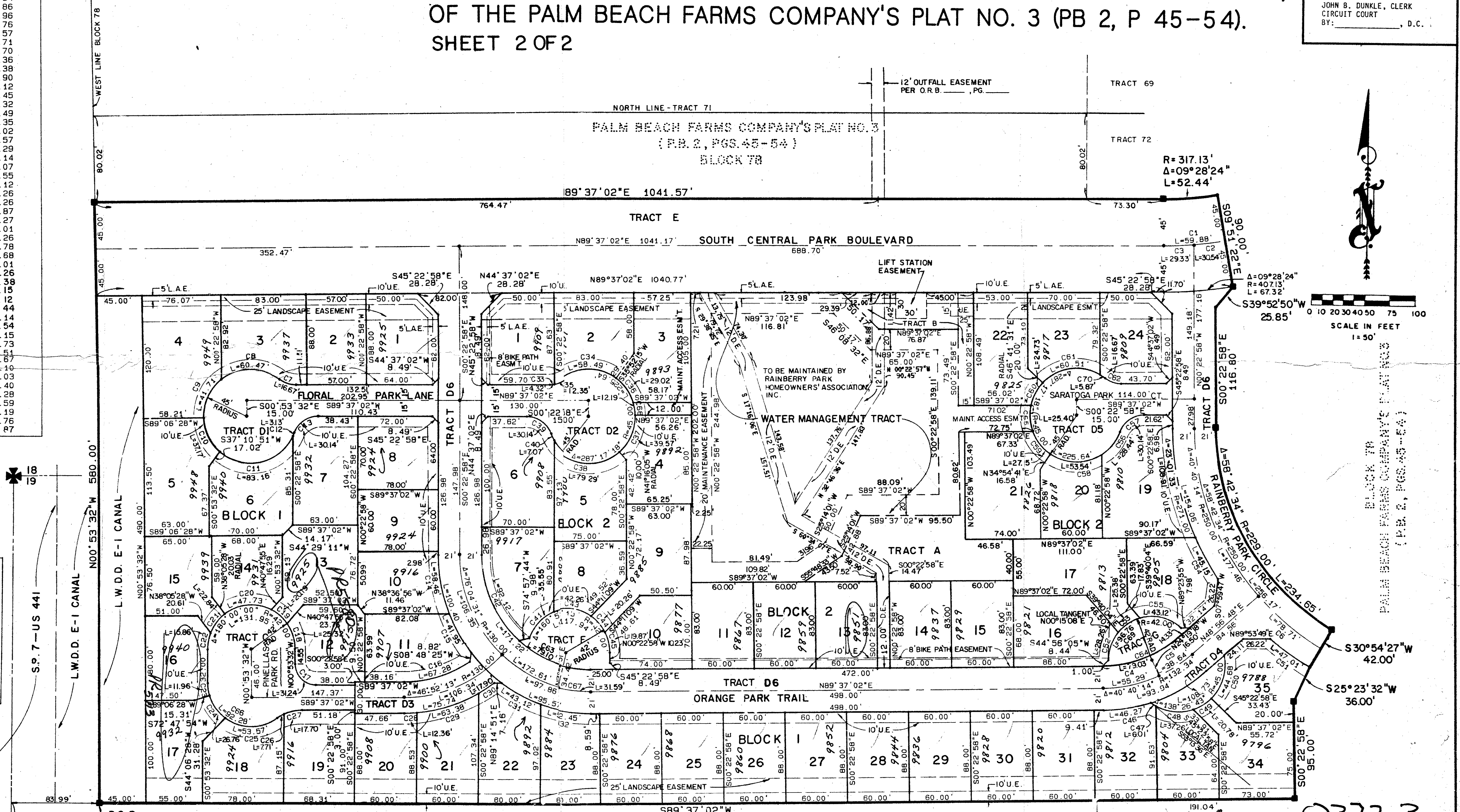
DRAWING NUMBER

DRAWING NUMBER

DRAWING NUMBER

P.U.D. TABULAR DATA

SITE AREA	= 14.9723 A.C.
UNITS	= 59 UNITS
CROSS DENSITY	= 3.94 DU/AC
RESIDENTIAL USE	= 100%
BUILDING AREA	= 7.677 A.C.
WATER BODIES	= 1.472 A.C.
TRIFET R.O.W.	= 4.8945 A.C.
CANAL R.O.W. DEDICATION	= .5062 A.C.
TRACT A & E	= .4226 A.C.



BLOCK 78  
PALM BEACH FARMS COMPANY'S PLAT NO. 3  
(P.B. 2, PGS 45-54)

19/47/40

SUBDIVISION (Rainberry Park 1)  
BOOK 48 PAGE 166  
FLOOD ZONE Aa-1 FLOOD MAP 4000  
QUAD 54 ZONING RS  
SE PUD ZIP CODE 33413  
PUD NAME RAINBERRY PARK

98/106

Meridian Surveying and mapping inc.  
WEST PALM BEACH, FLORIDA

DRAWN	ME	DATE	OCT 1983
CHECKED	SCALE	1" = 50'	
DRAWING NO	83-P-048		

RAINBERRY PARK PLAT NO. 1

0372-302