

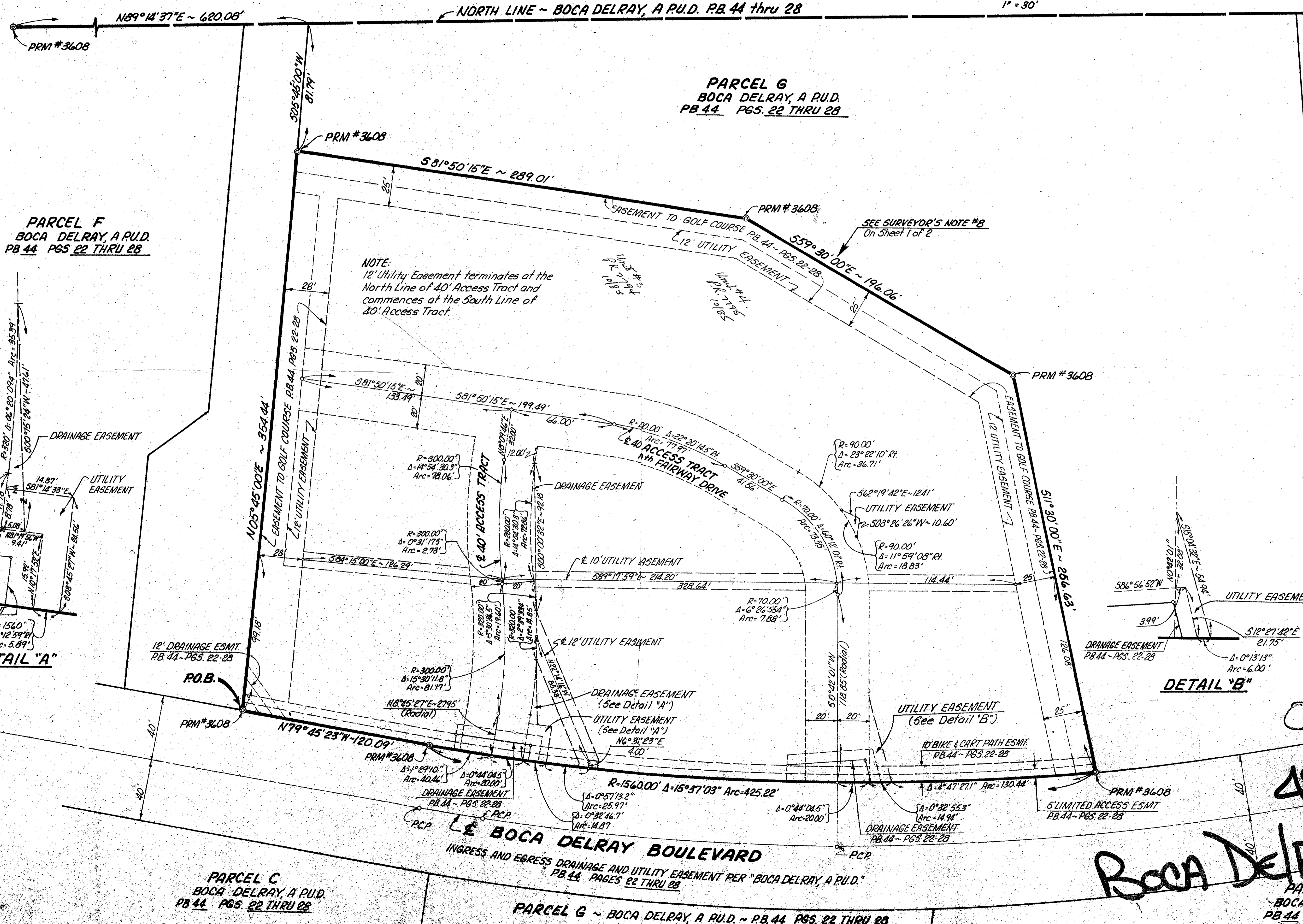
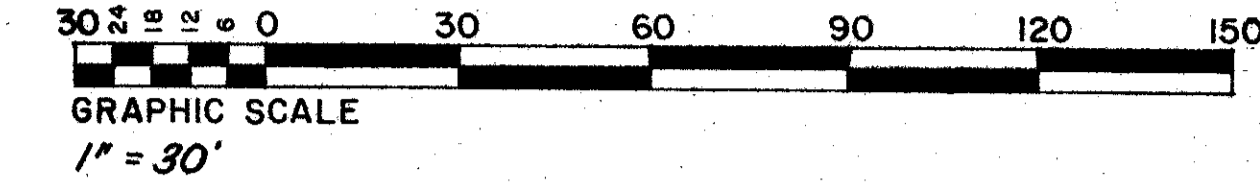
DRAWING NUMBER  
48/110

THIS INSTRUMENT PREPARED UNDER THE  
DIRECTION OF JOHN H. FITSCHEN  
**Craven-Thompson & Associates, Inc.**  
LAND SURVEYORS · CIVIL ENGINEERS  
5154 OKEECHOBEE BOULEVARD,  
WEST PALM BEACH, FLORIDA

# BOCA DELRAY PARCEL D

A REPLAT OF PARCEL D OF BOCA DELRAY, A P.U.D. AS RECORDED  
IN PLAT BOOK 44 AT PAGES 22 THRU 28 INCLUSIVE OF THE  
PUBLIC RECORDS OF PALM BEACH COUNTY, FLORIDA, SITUATED  
IN SECTION 26, TWP. 46 S., RNG. 42 E., PALM BEACH COUNTY, FL.  
SHEET 2 OF 2 SHEETS

110



PARCEL F  
BOCA DELRAY, A P.U.D.  
PB 44 PGS 22 THRU 28

PARCEL G  
BOCA DELRAY, A P.U.D.  
PB 44 PGS 22 THRU 28

PARCEL A  
BOCA DELRAY, A P.U.D.  
PB 44 PGS 71 & 72

PARCEL C  
BOCA DELRAY, A P.U.D.  
PB 44 PGS 22 THRU 28

PARCEL G ~ BOCA DELRAY, A P.U.D. ~ PB 44 PGS 22 THRU 28

0200-300  
48/110  
BOCA DELRAY PARCEL D  
PARCEL C  
BOCA DELRAY, A P.U.D.  
PB 44 PGS 22 THRU 28

DRAWING NUMBER

DRAWING NUMBER

DRAWING NUMBER

PLAN HOLD CORPORATION · IRVINE, CALIFORNIA  
REGISTERED PROFESSIONAL LAND SURVEYOR