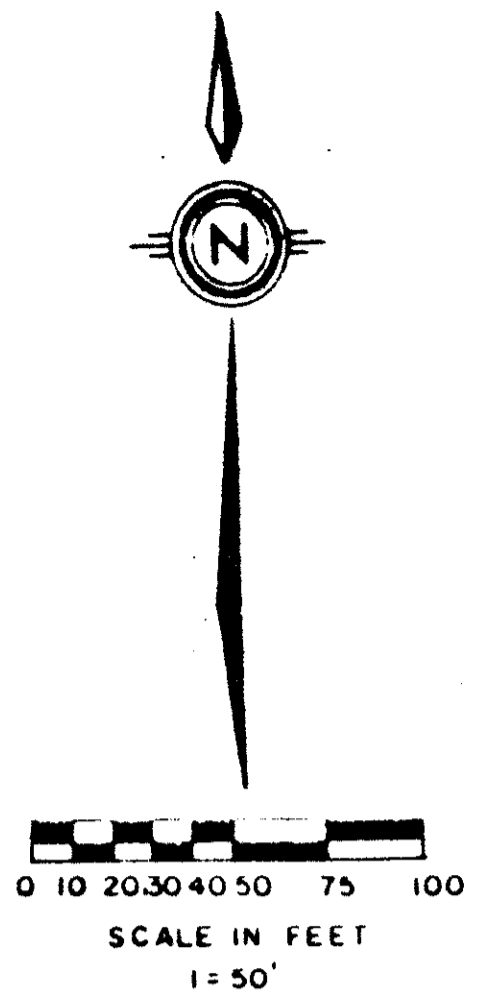


48/136

136

COUNTRYPARK AT BOCA RATON, III PART OF BOCA RIO, A P.U.D. SITUATE IN THE NORTHEAST ONE-QUARTER OF SECTION 32, TOWNSHIP 47 SOUTH, RANGE 42 EAST, PALM BEACH COUNTY, FLORIDA. SHEET 2 OF 2



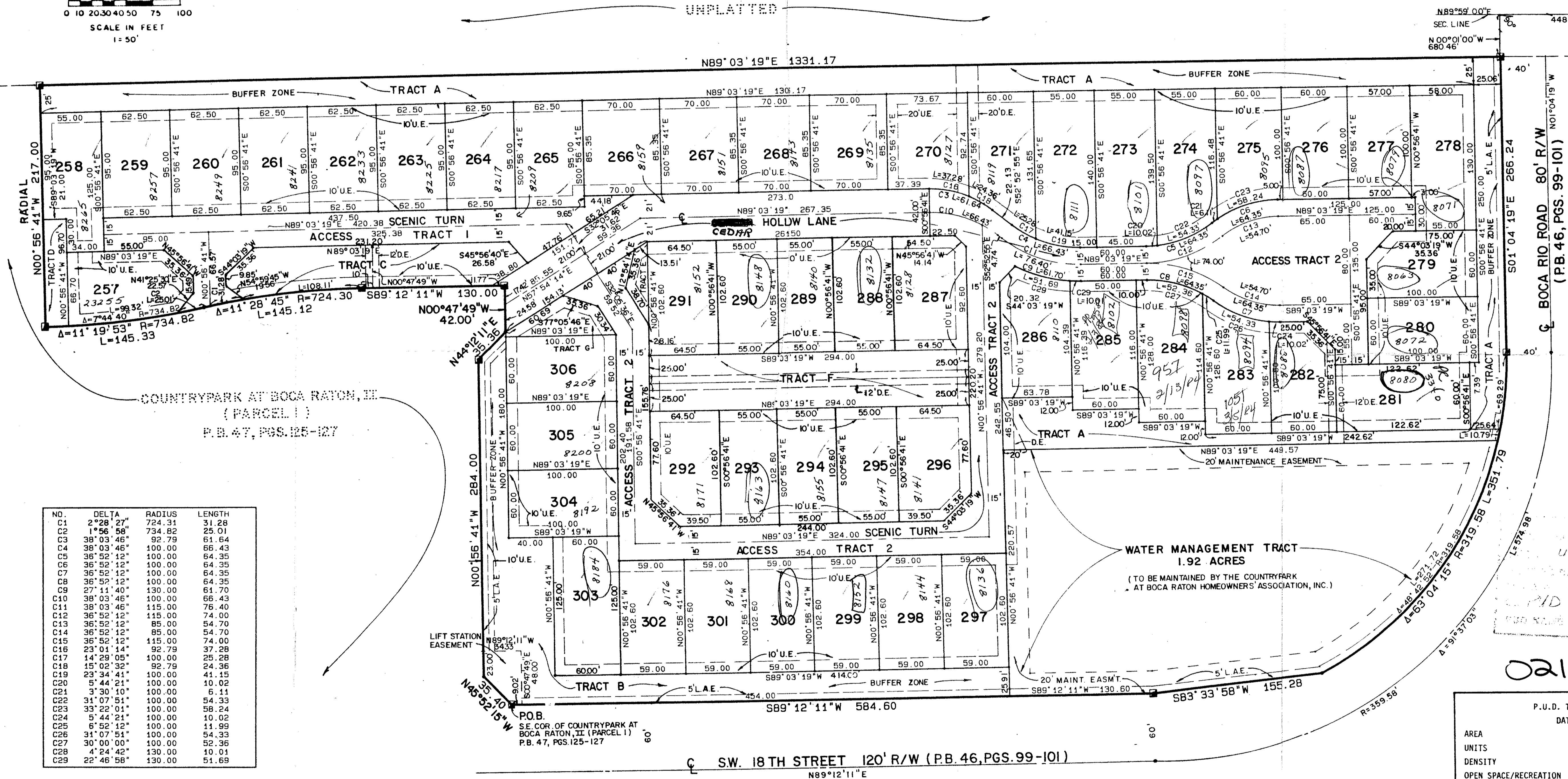
STATE OF FLORIDA
COUNTY OF PALM BEACH
THIS PLAT WAS FILED FOR
RECORD AT _____ DAY OF _____
AD, 1984 AND DULY RECORDED
IN PLAT BOOK _____ ON PAGES
_____ AND _____
JOHN B. DUNKLE, CLERK
CIRCUIT COURT
BY: _____, D.C.

DRAWING NUMBER

DRAWING NUMBER

DRAWING NUMBER

UNPLATTED



COUNTRYPARK AT BOCA RATON, III
(PARCEL 1)
P.B. 47, PGS. 125-127

NO	DELTA	RADIUS	LENGTH
C1	2°28'27"	724.31	31.28
C2	1°56'58"	734.82	25.01
C3	38°03'46"	92.79	61.64
C4	38°03'46"	100.00	66.43
C5	36°52'12"	100.00	64.35
C6	36°52'12"	100.00	64.35
C7	36°52'12"	100.00	64.35
C8	36°52'12"	100.00	64.35
C9	27°11'40"	130.00	61.70
C10	38°03'46"	100.00	66.43
C11	38°03'46"	115.00	76.40
C12	36°52'12"	115.00	74.00
C13	36°52'12"	85.00	54.70
C14	36°52'12"	85.00	54.70
C15	36°52'12"	115.00	74.00
C16	23°01'14"	92.79	37.28
C17	14°29'05"	100.00	25.28
C18	15°02'32"	92.79	24.36
C19	23°34'41"	100.00	41.15
C20	5°44'21"	100.00	10.02
C21	3°30'10"	100.00	6.11
C22	3°07'51"	100.00	54.23
C23	33°22'01"	100.00	58.23
C24	5°44'21"	100.00	10.02
C25	6°52'12"	100.00	11.99
C26	31°07'51"	100.00	54.33
C27	30°00'00"	100.00	52.36
C28	4°24'42"	130.00	19.91
C29	22°46'58"	130.00	51.69

P.U.D. TABULAR DATA	
AREA	13.54 AC.
UNITS	50
DENSITY	3.69 DU/AC
OPEN SPACE/RECREATION	7.72 AC.
ROADS & R/W'S	1.94 AC.
WATER BODIES	1.92 AC.
ZONING CLASSIFICATION	RS

COUNTRYPARK AT BOCA RATON, III (PARCEL 2)
P.B. 47, PGS. 125-127

0213-003

48/136

Meridian Surveying and mapping inc.
WEST PALM BEACH, FLORIDA

DRAWN	DATE	FEB 1984
CHECKED	SCALE	1"=50'
DRAWING NO.	83-029-3	

COUNTRYPARK AT BOCA RATON, III
PART OF BOCA RIO, A P.U.D.