

48/141

141

48

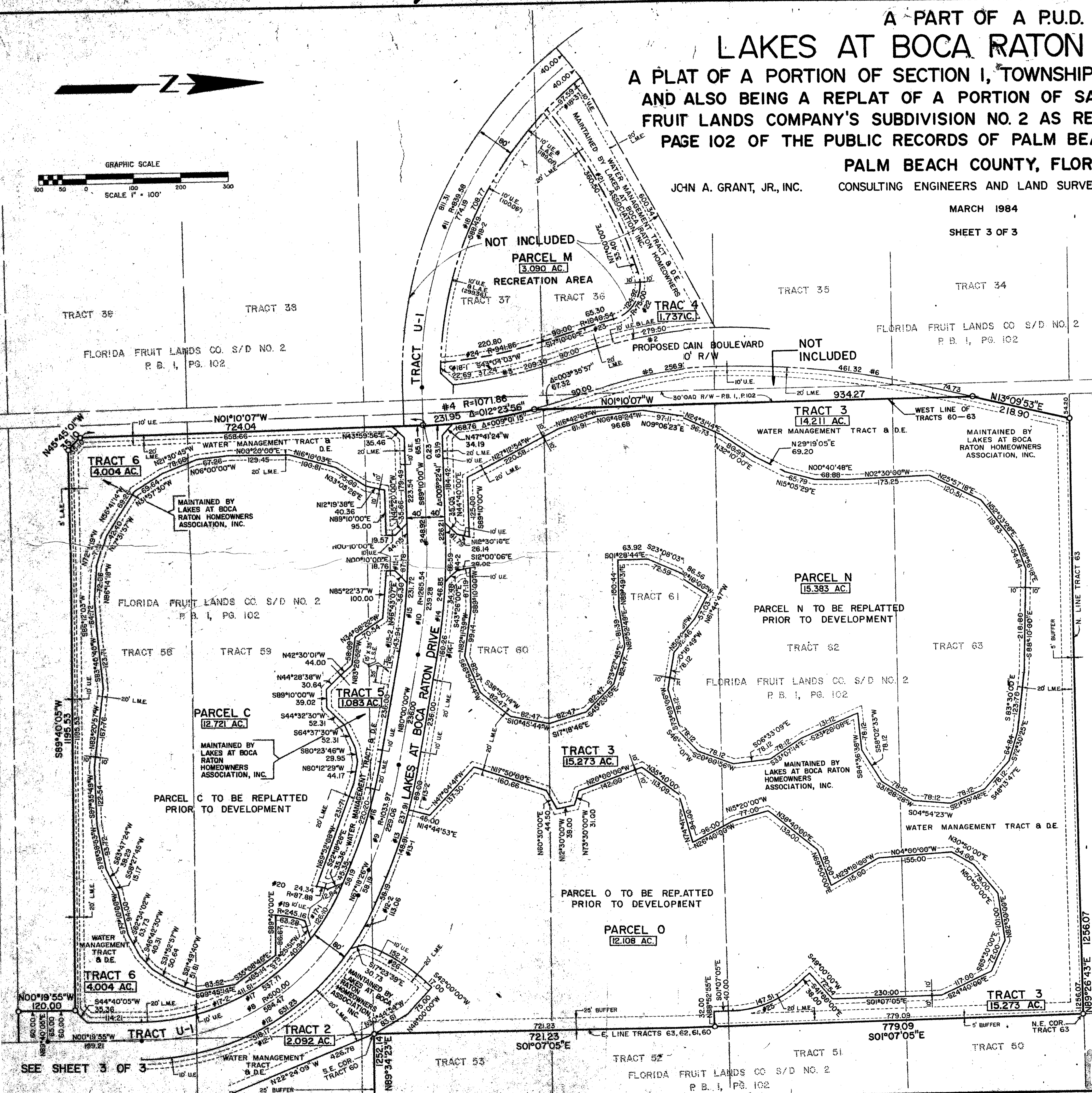
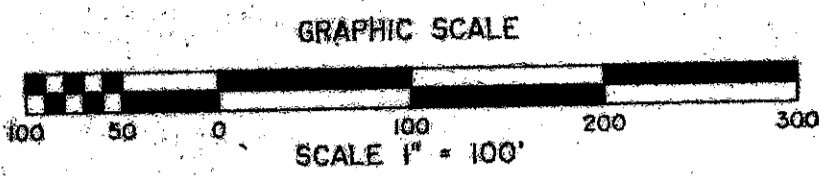
A PART OF A P.U.D.
LAKES AT BOCA RATON - PHASE I
 A PLAT OF A PORTION OF SECTION 1, TOWNSHIP 47 SOUTH, RANGE 41 EAST
 AND ALSO BEING A REPLAT OF A PORTION OF SAID SECTION 1 IN FLORIDA
 FRUIT LANDS COMPANY'S SUBDIVISION NO. 2 AS RECORDED IN PLAT BOOK 1,
 PAGE 102 OF THE PUBLIC RECORDS OF PALM BEACH COUNTY, FLORIDA

PALM BEACH COUNTY, FLORIDA

JOHN A. GRANT, JR., INC. CONSULTING ENGINEERS AND LAND SURVEYORS BOCA RATON, FLORIDA

MARCH 1984

SHEET 3 OF 3



CURVE TABLE

NUMBER	RADIUS	ARC	DELTA	CHORD	CHORD-BEARING
1	879.58	811.31	052°50'55"	782.85	N64°25'27"W
2	990.54	279.50	016°10'00"	278.57	S09°05'00"E
3	991.86	209.30	012°05'26"	208.91	S11°07'17"E
4	1071.86	231.95	012°23'56"	231.50	N07°22'05"W
5	910.54	256.92	016°10'00"	256.07	N09°05'00"W
6	1866.02	461.32	014°09'53"	460.15	N06°04'57"E
8	500.00	584.47	066°58'31"	551.76	N33°49'10"W
9	1033.97	229.06	012°41'34"	228.59	N73°39'13"W
10	1265.54	239.28	010°50'00"	238.93	N85°25'00"W
11	839.58	774.19	052°50'00"	747.05	N64°25'00"W
12	540.00	631.23	066°58'31"	595.90	N35°49'10"W
12-1		518.17	054°58'45"	498.51	N27°49'17"W
12-2		113.06	011°59'46"	112.85	N61°18'33"W
13	1073.97	237.91	012°41'34"	237.43	N73°39'13"W
13-1		148.91	007°56'41"	148.80	N71°16'46"W
13-2		89.00	004°44'53"	88.97	N77°37'33"W
14	1305.54	246.85	010°50'00"	246.48	N85°25'00"W
14-1		160.26	007°01'59"	160.16	N83°30'59"W
14-2		86.59	003°48'01"	86.57	N88°55'59"W
15	1225.54	231.72	010°50'00"	231.38	S85°25'00"E
15-1		87.78	004°06'13"	87.76	S88°46'53"E
15-2		143.94	006°43'47"	143.86	S83°21'53"E
16	993.97	220.20	012°41'34"	219.75	S83°48'15"E
17	460.00	537.71	066°58'31"	507.62	S83°48'15"E
17-1		126.10	015°42'23"	125.70	S59°27'15"E
17-2		411.61	051°16'08"	398.02	S25°57'59"E
18	799.58	708.77	050°47'20"	685.80	N63°23'40"W
18-1		22.69	001°37'34"	22.69	N87°58'33"W
18-2		588.49	042°10'11"	575.30	N66°04'40"W
18-3		97.59	006°59'35"	97.53	N41°29'47"W
19	245.16	63.28	014°47'17"	63.10	S11°04'05"W
20	87.88	24.34	015°52'09"	24.26	S14°45'29"W
21	1016.33	360.50	020°19'23"	368.61	N60°50'19"E
22	75.00	124.92	095°25'43"	110.97	S61°17'08"E
23	1040.54	65.30	003°35'43"	65.28	S15°22'08"E
24	941.86	220.80	013°25'54"	220.29	S10°27'03"E
25	211.92	147.51	039°52'55"	144.55	S21°03'32"E
26	407.41	152.71	021°26'38"	151.82	S31°15'41"W

BOCA CHASE SECTION FOUR
P. B. 45, PG. 197 & 198

NOTES:

Bearings shown herein are based on a bearing of S00°59'03"E along the Range line (West line Sec. 6, T. 47 S., R. 42 E.) as obtained from the Section breakdown map - Sec. 1, T. 47 S., R. 41 E. from Palm Beach County.

No buildings or any kind of construction shall be placed on utility or drainage easements.
 No structures, trees or shrubs shall be placed on drainage easements.

Approval of landscaping on utility easements, other than water and sewer, shall be only with the approval of all utilities occupying same.

- P.R.M. Indicates Permanent Reference Monument.
- P.C.P. Indicates Permanent Control Point.
- U.E. Indicates Utility Easement.
- D.E. Indicates Drainage Easement.
- L.S.E. Indicates Lift Station Easement.
- L.A.E. Indicates Limited Access Easement.
- L.M.E. Indicates Lake Maintenance Easement.

Residential tracts must be replatted prior to development.

This instrument was prepared by:
 John A. Grant, Jr., John A. Grant, Jr., Inc.
 5333 North Federal Highway, Boca Raton, Florida 33431

0388-000

48/141
P.M.T.

LAKES OF BOCA RATON

DRAWING NUMBER

DRAWING NUMBER

DRAWING NUMBER

SEE SHEET 3 OF 3

FLORIDA FRUIT LANDS CO S/D NO. 2
P. B. 1, PG. 102