

MAY 1984

A PART OF A PLANNED UNIT DEVELOPMENT

SHEET 2 OF 2

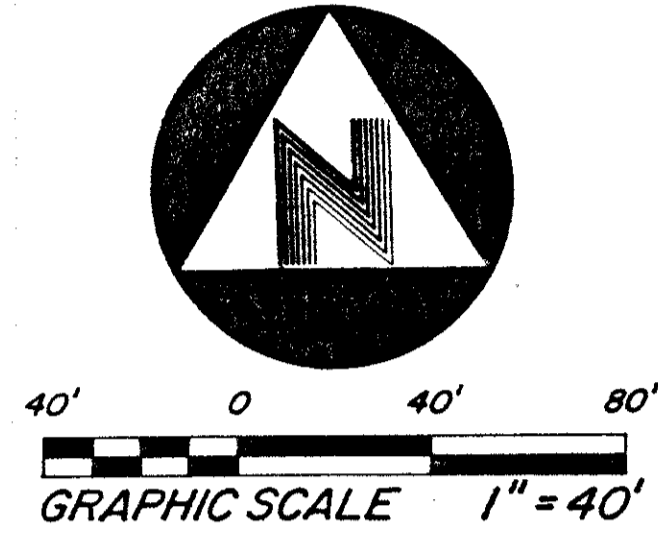
162

# LAKEES OF BOCA BARWOOD - PLAT 2

LYING IN SECTION 32, TOWNSHIP 47 SOUTH, RANGE 42 EAST

BEING A REPLAT OF PART OF TRACTS 18,19,20,27 & 28, BLOCK 83, PALM BEACH FARMS COMPANY PLAT NO. 3, PLAT BOOK NO. 2, PAGES 45 THROUGH 54, INCLUSIVE, PUBLIC RECORDS, PALM BEACH COUNTY, FLORIDA.

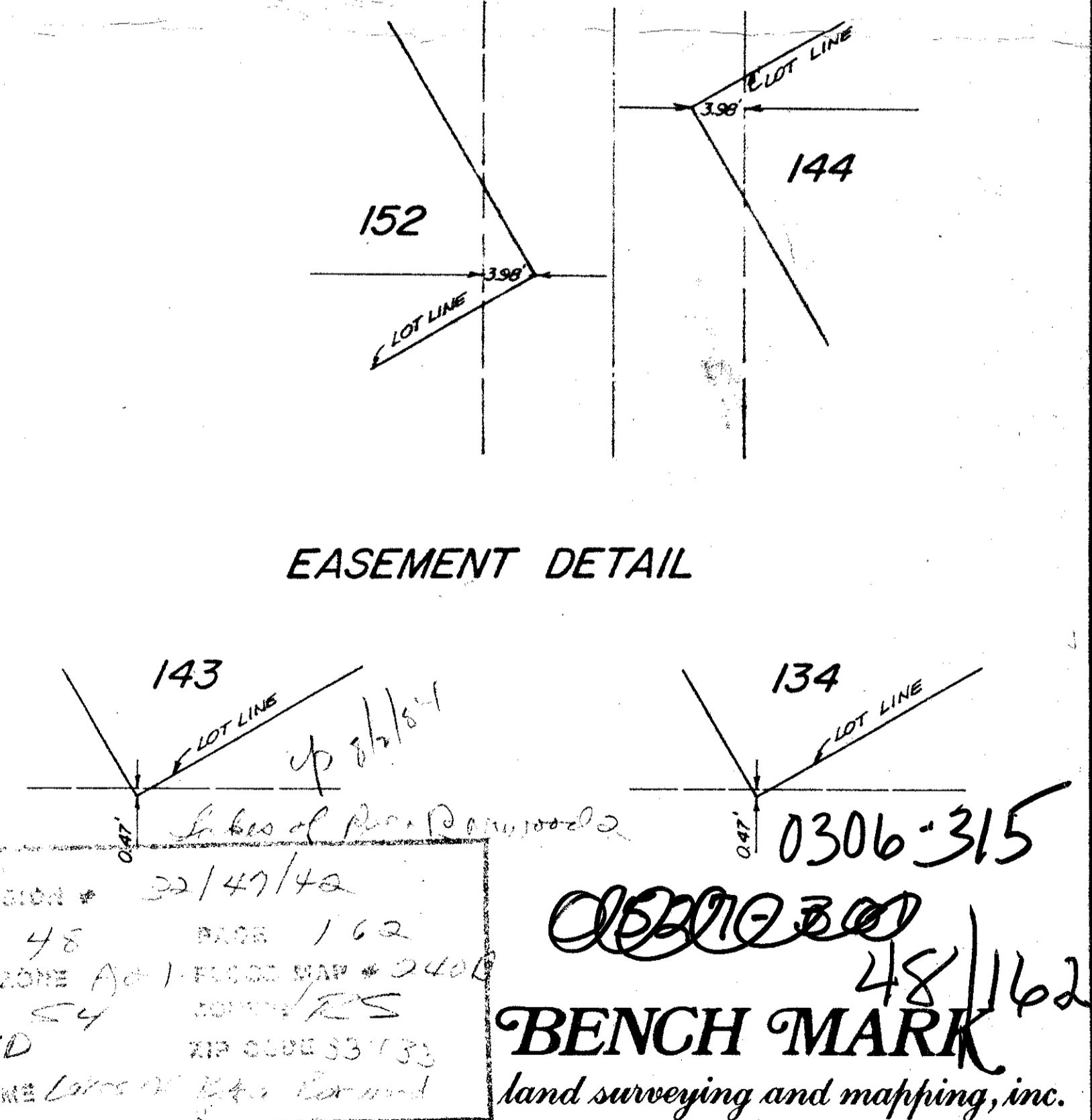
STATE OF FLORIDA  
 COUNTY OF PALM BEACH  
 THIS PLAT WAS FILED FOR  
 RECORD AT \_\_\_\_\_ DAY OF  
 THIS \_\_\_\_\_, AD, 1984 AND  
 DULY RECORDED IN PLAT BOOK  
 \_\_\_\_\_ ON PAGES \_\_\_\_\_ AND  
 \_\_\_\_\_  
 JOHN B. DUNKLE, CLERK  
 CIRCUIT COURT  
 BY: \_\_\_\_\_ DC



### SURVEYORS' NOTES:

- INDICATES P.R.M. (PERMANENT REFERENCE MONUMENT) SET BY SURVEYOR NUMBER 2424.
- ⊙ INDICATES P.C.P. (PERMANENT CONTROL POINT) SET BY SURVEYOR NUMBER 2424.
- ALL INTERNAL LOT ANGLES ARE 90°00'00"

### EASEMENT DETAIL



P.U.D. TABULATIONS

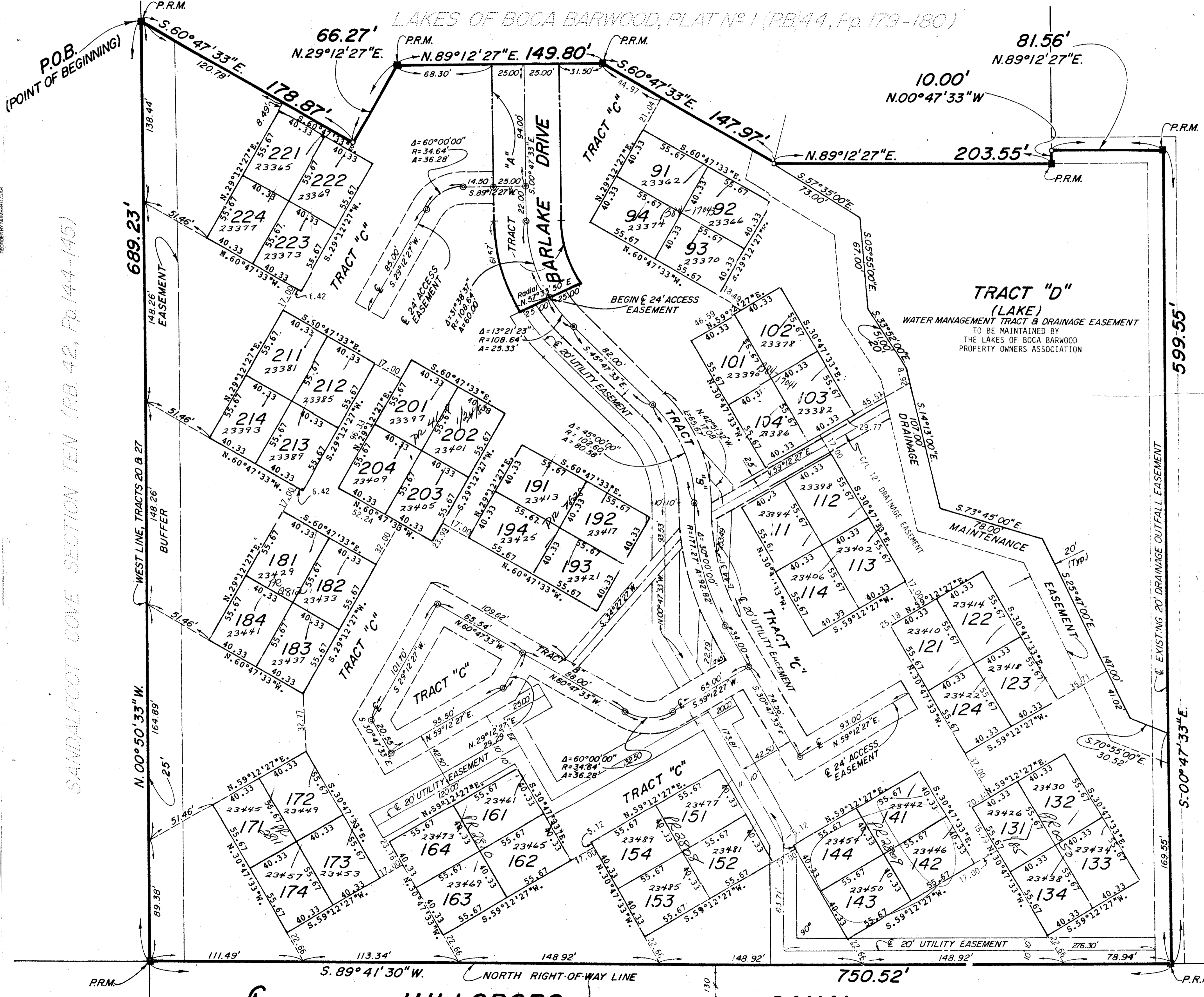
TRACT A	0.20	ACRES	=	2%
TRACT B	0.60	ACRES	=	6%
TRACT C	5.58	ACRES	=	52%
TRACT D	1.47	ACRES	=	13%
LOTS	2.89	ACRES	=	27%
TOTAL PROJECT	10.74	ACRES	=	100%

CONRAD W. SCHAEFER CONSULTING ENGINEERS, INC.  
 PALM BEACH COUNTY FLORIDA

**LAKEES OF BOCA BARWOOD - PLAT 2**

DESIGNER	CW	DRAWN	PB	CHECKED	MD	JOB NO.	P 8600
SCALE		APPROVED		FILE NO.		SHEET OF	2 of 2

48/162



DRAWING NUMBER 48/162

DRAWING NUMBER

DRAWING NUMBER

DRAWING NUMBER

PLAN HOLD CORPORATION • IRVINE, CALIFORNIA