

STATE OF FLORIDA  
COUNTY OF PALM BEACH  
THIS PLAT WAS FILED FOR  
RECORD AT \_\_\_\_\_ M.  
THIS \_\_\_\_\_ DAY OF \_\_\_\_\_  
A.D. 1983, AND DULY RECORDED  
IN PLAT BOOK \_\_\_\_\_ ON  
PAGES \_\_\_\_\_ AND \_\_\_\_\_  
JOHN B DUNKLE,  
CLERK CIRCUIT COURT  
BY \_\_\_\_\_  
DEPUTY CLERK

SHEET No. 2 of 2

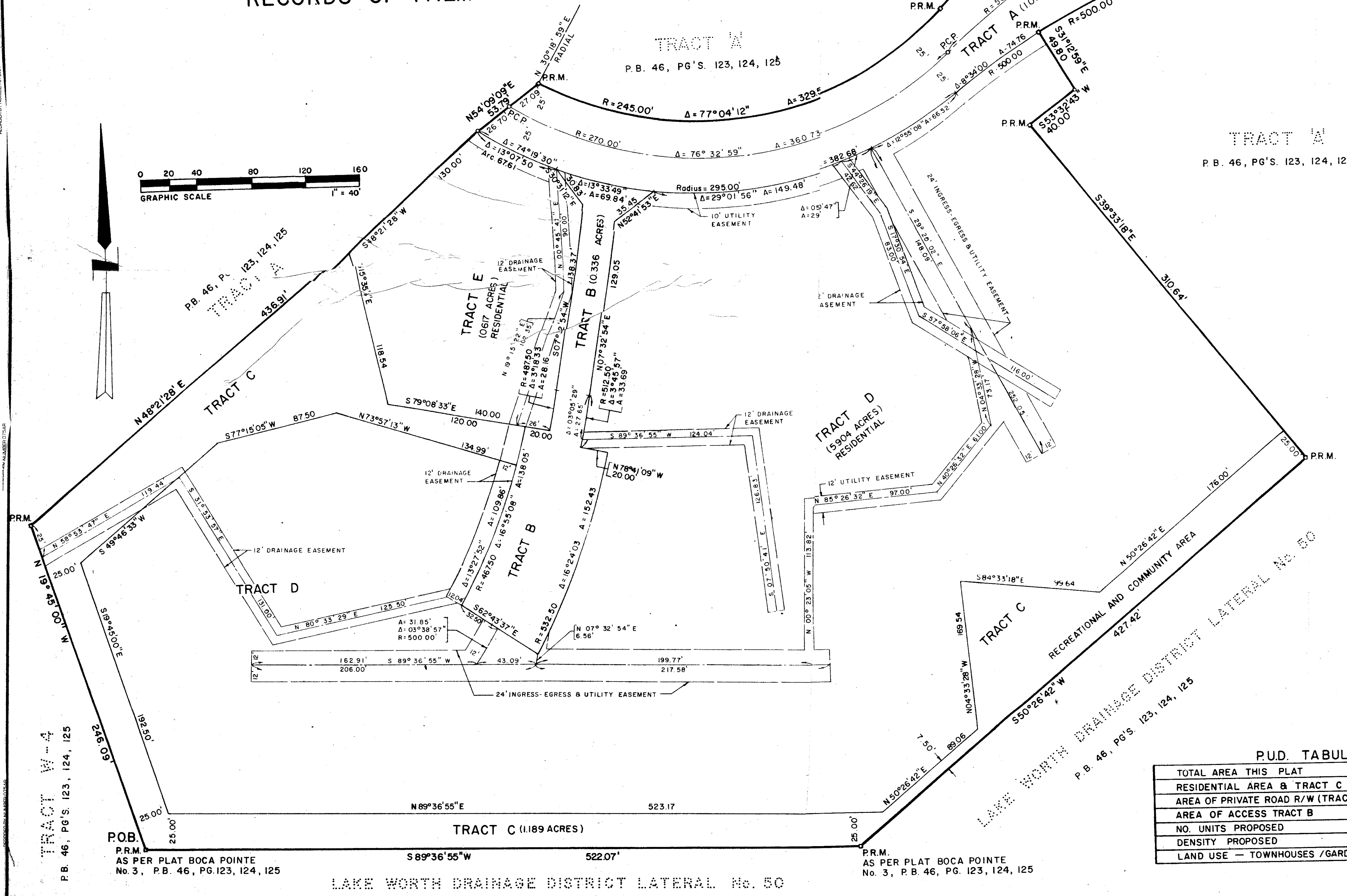
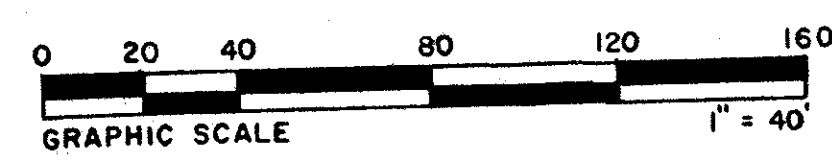
# VILLA SONESTA AT BOCA POINTE

## PHASE ONE

SEC. 34., TWP. 47 S., RGE. 42 E.

A PORTION OF BOCA POINTE P.U.D., BEING A REFLAT OF A PORTION OF TRACT "A", BOCA POINTE PLAT No. 3 AS RECORDED IN PLAT BOOK 46, PAGES 123, 124, 125 OF THE PUBLIC RECORDS OF PALM BEACH COUNTY, FLORIDA.

PREPARED BY  
**CAULFIELD and WHEELER, INC.**  
LAND SURVEYORS-CONSULTING ENGINEERS  
2290 NW 2nd AVENUE  
BOCA RATON, FLORIDA 33431



P.U.D. TABULAR DATA

TOTAL AREA THIS PLAT	9,116 AC.
RESIDENTIAL AREA & TRACT C	7,710 AC.
AREA OF PRIVATE ROAD R/W (TRACT A)	1,070 AC.
AREA OF ACCESS TRACT B	0,336 AC.
NO. UNITS PROPOSED	108
DENSITY PROPOSED	11.85 UNITS/AC.
LAND USE — TOWNHOUSES /GARDEN APT.'S	

0211-021  
164  
4-8/164

DRAWING NUMBER  
48/164

DRAWING NUMBER

DRAWING NUMBER

DRAWING NUMBER

PLAN HOLD CORPORATION • IRVINE, CALIFORNIA  
RECORD BY NUMBER 02148