

48/1168

168

PART OF BOCA POINTE P. U. D.

THE PALMS AT BOCA POINTE

A PLAT OF A PORTION OF SECTION 33, TOWNSHIP 47 SOUTH, RANGE 42 EAST AND ALSO BEING A REPLAT OF TRACT I OF BOCA POINTE NO. 2, AS RECORDED IN PLAT BOOK 47, PAGES 26 & 27 OF THE PUBLIC RECORDS OF PALM BEACH COUNTY, FLORIDA

JOHN A. GRANT, JR., INC.

CONSULTING ENGINEERS AND LAND SURVEYORS

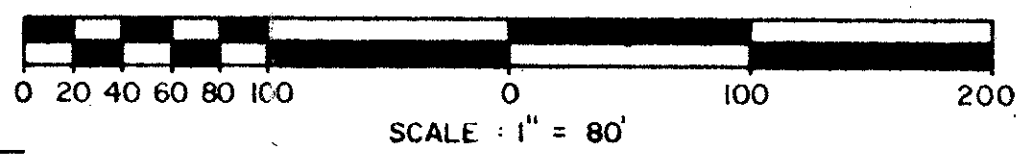
BOCA RATON, FLORIDA

BOCA POINTE NO. 1 PB. 42, PG. 141, 142 & 143

JANUARY 1984

SHEET 2 OF 3

SEE DETAIL "A"

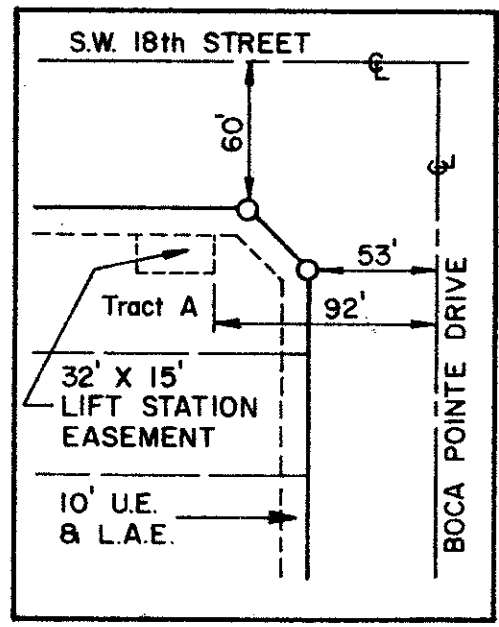


This instrument was prepared by: John A. Grant, Jr., John A. Grant, Jr., Inc. 3333 North Federal Highway, Boca Raton, Florida 33431.

0211-007

CURVE TABLE

NUMBER	RADIUS	ARC	DELTA	TANGENT	CHORD	CHORD-BEARING
1	60.00	58.54	055°54'20"	31.84	56.25	S01°07'20"E
1-1		8.88	008°28'54"	4.45	8.87	S22°35'23"W
1-2		25.40	024°15'05"	12.89	25.21	S06°13'24"W
1-3		24.26	023°10'21"	12.30	24.10	S17°29'18"E
2	767.54	217.17	016°12'40"	109.31	216.44	S09°13'40"E
2-1		5.00	000°22'24"	2.50	5.00	S01°18'32"E
2-2		212.17	015°50'16"	106.76	211.49	S09°24'52"E
3	740.52	213.25	016°30'00"	107.37	212.52	S09°05'00"E
4	74.85	117.36	089°50'00"	74.63	105.70	S44°03'00"W
5	2704.32	259.60	005°30'00"	129.90	259.50	N88°15'00"W
6	2965.17	303.27	005°51'36"	151.77	303.14	N88°25'48"W
6-1		17.25	000°20'00"	8.63	17.25	N85°40'00"W
6-2		286.02	005°31'36"	143.12	285.91	N88°35'48"W
7	2955.17	70.51	001°22'02"	35.26	70.51	S86°03'21"W
8	4050.36	267.88	003°47'22"	133.99	267.83	S87°16'01"W
9	85.00	142.18	095°50'18"	94.13	126.17	N42°55'09"W
10	3387.44	727.60	012°18'24"	365.21	726.20	N01°09'12"W
11	75.00	105.39	080°30'36"	63.50	96.93	N41°29'08"E
12	75.00	117.81	090°00'00"	75.00	106.07	S46°07'20"E
13	1710.92	177.84	005°57'20"	89.00	177.76	S01°51'20"W
14	1960.83	203.82	005°57'20"	102.00	203.72	S01°51'20"W
15	1250.55	151.81	006°57'20"	76.00	151.72	S02°21'20"W
16	1317.55	306.61	013°20'00"	154.00	305.92	S00°50'00"E
17	325.77	120.35	021°10'00"	60.87	119.67	N06°25'00"W
18	1161.93	314.33	015°30'00"	158.13	313.37	N09°15'00"W
19	1935.83	190.11	005°37'36"	95.13	190.03	N02°01'12"E
19-1		37.70	001°06'57"	18.85	37.70	N00°14'07"W
19-2		50.80	001°30'13"	25.40	50.80	N01°04'28"E
19-3		50.80	001°30'13"	25.40	50.80	N02°34'41"E
19-4		50.80	001°30'13"	25.40	50.80	N04°04'54"E
20	1735.92	180.44	005°57'20"	90.30	180.36	N01°51'20"E
20-1		52.57	001°44'06"	26.29	52.56	N03°57'57"E
20-2		47.27	001°33'51"	23.64	47.27	N02°19'06"E
20-3		47.39	001°33'51"	23.70	47.39	N00°45'22"E
20-4		33.21	001°05'46"	16.60	33.21	N00°34'27"W
21	100.00	157.08	090°00'00"	100.00	141.42	N46°07'20"W
21-1		41.15	023°34'41"	20.87	40.86	N12°54'40"W
21-2		115.93	066°25'19"	65.47	109.54	N57°54'40"W
22	100.00	155.09	088°51'23"	98.02	140.00	S37°18'45"W
22-1		128.19	073°26'29"	74.59	119.58	S45°01'11"W
22-2		26.91	015°24'54"	13.53	26.82	S00°35'30"W
23	3372.44	724.38	012°18'24"	363.59	722.99	S01°09'12"E
23-1		42.18	000°42'59"	21.09	42.18	S06°56'54"E
23-2		60.14	000°51'07"	25.07	60.14	S06°09'51"E
23-3		50.08	000°51'03"	25.04	50.09	S05°18'46"E
23-4		50.05	000°51'01"	25.02	50.05	S04°27'44"E
23-5		50.02	000°51'00"	25.01	50.02	S03°36'44"E
23-6		50.01	000°50'58"	25.00	50.00	S02°45'45"E
23-7		55.00	000°56'04"	27.50	55.00	S01°52'14"E
23-8		50.01	000°50'59"	25.00	50.01	S00°58'42"E
23-9		50.02	000°50'59"	25.01	50.03	S00°07'43"E
23-10		50.06	000°51'02"	25.03	50.05	S00°43'17"W
23-11		50.09	000°51'04"	25.05	50.09	S00°34'20"W
23-12		50.15	000°51'07"	25.07	50.15	S02°23'26"W
23-13		50.21	000°51'11"	25.11	50.21	S03°16'35"W
23-14		50.29	000°51'15"	25.14	50.28	S04°07'48"W
23-15		26.07	000°26'35"	13.04	26.08	S04°46'43"W
24	100.00	167.27	095°50'18"	110.75	148.44	S42°55'09"E
24-1		21.67	012°25'05"	10.88	21.63	S01°12'32"E
24-2		39.60	022°41'12"	20.06	39.34	S18°45'41"E
24-3		37.00	021°11'58"	18.71	36.79	S40°42'16"E
24-4		37.00	021°11'58"	18.71	36.79	S61°54'14"E
24-5		32.00	D18°20'05"	16.14	31.86	S81°40'15"E
25	4065.36	268.88	006°47'22"	134.49	268.82	N87°16'01"E
25-1		16.32	000°13'50"	8.18	16.36	N89°02'47"E
25-2		50.01	000°42'18"	25.01	50.02	N88°34'43"E
25-3		50.04	000°42'18"	25.02	50.03	N87°52'25"E
25-4		50.06	000°42'16"	25.03	50.06	N87°10'06"E
25-5		50.10	000°42'22"	25.05	50.10	N86°27'45"E
25-6		50.13	000°42'24"	25.07	50.14	N85°45'22"E
25-7		2.17	000°01'50"	1.08	2.16	N85°23'15"E
26	2940.00	468.39	009°47'40"	234.89	467.90	N85°56'10"E
26-1		47.97	000°56'06"	23.99	47.97	N85°50'23"E
26-2		50.08	000°56'55"	25.04	50.08	N86°47'43"E
26-3		50.00	000°58'31"	25.02	50.04	N87°46'15"E
26-4		50.01	000°58'28"	25.01	50.01	N88°44'44"E
26-5		50.00	000°58'28"	25.00	50.00	N89°43'12"E
26-6		50.04	000°58'28"	25.00	50.00	S89°18'20"E
26-7		50.02	000°58'29"	25.01	50.02	S88°19'51"E
26-8		50.05	000°58'32"	25.03	50.05	S87°21'21"E
26-9		50.10	000°58'34"	25.05	50.10	S86°22'48"E
26-10		20.11	000°23'31"	10.05	20.11	S85°41'45"E
27	2729.32	261.99	005°30'00"	131.10	261.90	S88°15'00"E
27-1		30.03	000°37'49"	15.01	30.03	S85°48'54"E
27-2		50.08	001°03'06"	25.04	50.09	S86°39'22"E
27-3		50.04	001°03'01"	25.02	50.04	S87°42'25"E
27-4		50.02	001°03'00"	25.01	50.01	S88°45'26"E



DETAIL "A"
SCALE: 1" = 80'
F52-26M
R1-2 - 340'
R2-1 Pond
Proposed 12
TRACT I
Boca Pointe

AREA TABLE

LOT	SO. FT.	LOT	SO. FT.	LOT	SO. FT.	LOT	SO. FT.	LOT	SO. FT.	LOT	SO. FT.	LOT	SO. FT.	LOT	SO. FT.	LOT	SO. FT.	LOT	SO. FT.	LOT	SO. FT.	LOT	SO. FT.		
1	7.282	19	11.235	37	6.332	55	6.426	73	5.425	91	5.250	109	5.298	127	5.293	145	5.356	163	5.362	181	5.362	199	5.362	217	5.362
2	7.117	20	9.837	38	6.161	56	6.373	74	5.266	92	5.995	110	5.298	128	5.293	146	5.356	164	5.362	182	5.362	200	5.362	218	5.362
3	7.238	21	7.560	39	6.022	57	6.282	75	5.607	93	5.446	111	5.298	129	5.293	147	5.356	165	5.362	183	5.362	201	5.362	219	5.362
4	7.617	22	6.061	40	5.914	58	6.154	76	5.607	94	6.208	112	5.298	130	5.293	148	5.356	166	5.362	184	5.362	202	5.362	220	5.362
5	7.737	23	6.047	41	5.836	59	5.989	77	5.607	95	6.208	113	5.271	131	5.293	149	5.347	167	5.350	185	5.362	203	5.362	221	5.362
6	7.794	24	6.078	42	5.784	60	5.786	78	5.831	96	6.208	114	5.271	132	5.293	150	5.332	168	5.250	186	5.362	204	5.362	222	5.362
7	7.994	25	6.155	43	5.967	61	5.561	79	6.089	97	5.814	115	5.271	133	5.293	151	5.293	169	5.250	187	5.362	205	5.362	223	5.362
8	8.126	26	6.277	44	6.123	62	6.368	80	5.426	98	5.250	116	5.307	134	5.340	152	5.293	170	5.250	188	5.362	206	5.362	224	5.362
9	8.586	27	6.103	45	5.489	63	5.308	81	5.424	99	6.209	117	5.307	135	5.293	153	5.293	171	5.250	189	5.362	207	5.362	225	5.362
10	9.601	28	6.622	46	5.489	64	5.629	82	5.782	100	5.370	118	5.307	136	5.250	154	5.716	172	5.250	190	5.362	208	5.362	226	5.362
11	7.900	29	6.758	47	5.493	65	5.629	83	5.462	101	5.370	119	5.307	137	5.250	155	5.716	173	5.250	191	5.362	209	5.362	227	5.362
12	7.980	30	6.852	48	5.740	66	5.629	84	5.462	102	5.370	120	5.307	138	5.444	156	5.716	174	5.250	192	5.362	210	5.362	228	5.362
13	8.821	31	6.903	49	5.930	67	5.171	85	5.462	103	5.370	121	5.391	139	5.445			175	5.250	193	5.362	211	5.362	229	5.362
14	6.140	32	6.123	50	6.123	68	5.482	86	5.482	104	5.370	122	5.293	140	6.671			176	5.250	194	5.362	212	5.362	230	5.362
15	5.676	33	6.879	51	6.239	69	5.322	87	5.322	105	5.267	123	5.293	141	5.251			177	5.250	195	5.362	213	5.362	231	5.362
16	5.416	34	6.802	52	6.357	70	5.322	88	5.462	106	6.659	124	5.293	142	5.293			178	5.250	196	5.362	214	5.362	232	5.362
17	5.984	35	6.684	53	6.418	71	5.425	89	5.397	107	6.432	125	5.293	143	5.339			179	5.250	197	5.362	215	5.362	233	5.362
18	7.737	36	6.522	54	7.087	72	5.425	90	5.250	108	5.298	126	5.293	144	6.003			180	5.250	198	5.362	216	5.362	234	5.362