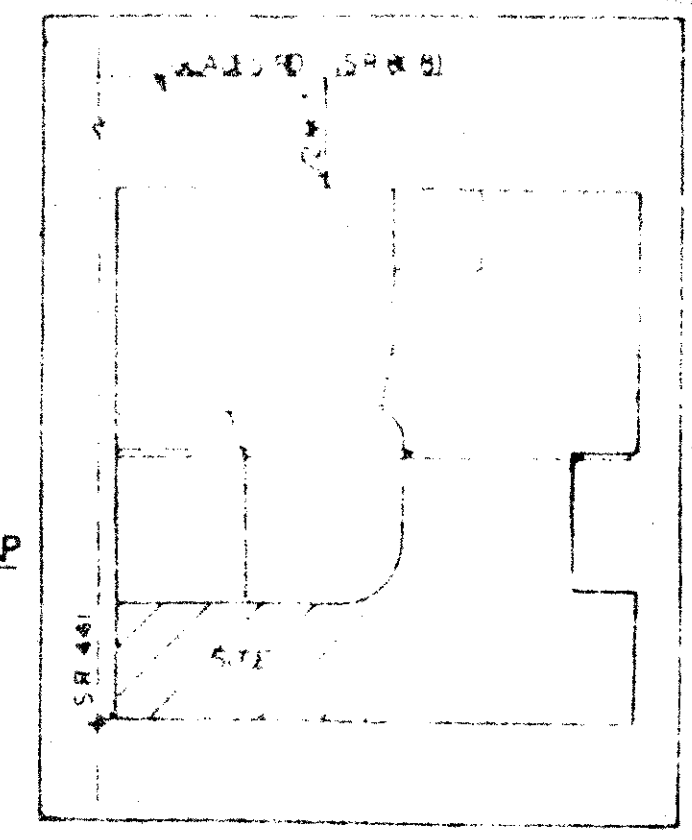


AMENDED PLAT OF RAINBERRY PARK PLAT NO. 1 PART OF RAINBERRY OF WEST BOCA A P.U.D. SITUATE IN SECTION 19, TOWNSHIP 47 SOUTH, RANGE 42 EAST, PALM BEACH COUNTY, FLORIDA, BEING AN AMENDED PLAT OF RAINBERRY PARK PLAT NO. 1 (P.B. 48, PGS. 105 - 106) SHEET 1 OF 2

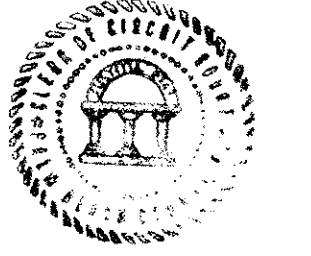
28

LOCATION MAP
NTS



STATE OF FLORIDA
COUNTY OF PALM BEACH
THIS PLAT WAS FILED FOR
RECORD AT 2:29 PM
THIS 28th DAY OF August
AD. 1984 AND DULY RECORDED
IN PLAT BOOK 49 ON PAGES
18 AND 19
JOHN B. DUNKLE, CLERK
BY: *[Signature]*, D.C.

8P



SURVEYOR'S CERTIFICATE

I HEREBY CERTIFY THAT THE PLAT SHOWN HEREON IS A TRUE AND CORRECT REPRESENTATION OF A SURVEY MADE UNDER MY RESPONSIBLE DIRECTION AND SUPERVISION; THAT SAID SURVEY COMPLIES WITH CHAPTER 21HH-6 OF THE FLORIDA ADMINISTRATIVE CODE AND IS ACCURATE TO THE BEST OF MY KNOWLEDGE AND BELIEF; THAT PERMANENT REFERENCE MONUMENTS (P.R.M.'S) HAVE BEEN SET; THAT PERMANENT CONTROL POINTS (C.P.'S) WILL BE SET UNDER GUARANTEES POSTED WITH THE PALM BEACH COUNTY BOARD OF COUNTY COMMISSIONERS FOR THE REQUIRED IMPROVEMENTS; THAT THE SURVEY DATA COMPLIES WITH ALL THE REQUIREMENTS OF CHAPTER 177 OF THE FLORIDA STATUTES, AS AMENDED, AND ORDINANCES OF PALM BEACH COUNTY, FLORIDA.

THIS 28th DAY OF August, 1984.
[Signature]
WESLEY B. HAAS
PROFESSIONAL LAND SURVEYOR
FLORIDA CERTIFICATE NO. 3708

SURVEYOR'S NOTES:

- ALL BEARINGS SHOWN HEREON REFER TO AN ASSUMED BEARING OF S89 37'02"W ALONG THE SOUTH LINE OF TRACT 71, BLOCK 78 OF THE PALM BEACH FARMS COMPANY'S PLAT NO. 3.
U.E. DENOTES UTILITY EASEMENT.
D.E. DENOTES DRAINAGE EASEMENT.
L.A.E. DENOTES LIMITED ACCESS EASEMENT.
P.R.M. DENOTES PERMANENT REFERENCE MONUMENT AND THEY ARE SHOWN THIS:
C.P. DENOTES PERMANENT CONTROL POINT AND THEY ARE SHOWN THIS:
- THERE SHALL BE NO BUILDINGS OR ANY KIND OF CONSTRUCTION PLACED ON UTILITY OR DRAINAGE EASEMENTS.
THERE SHALL BE NO TREES OR SHRUBS PLACED ON UTILITY EASEMENTS WHICH ARE PROVIDED FOR WATER AND SEWER USE OR UPON DRAINAGE EASEMENTS.
LANDSCAPING ON OTHER UTILITY EASEMENTS SHALL BE ALLOWED ONLY AFTER CONSENT OF ALL UTILITY COMPANIES OCCUPYING SAME.
- THE BUILDING SETBACK LINE SHALL BE AS REQUIRED BY CURRENT PALM BEACH COUNTY ZONING REGULATIONS.

APPROVALS

PALM BEACH COUNTY BOARD OF COUNTY COMMISSIONERS
PALM BEACH COUNTY, FLORIDA

THIS PLAT IS HEREBY APPROVED FOR RECORD THIS 26 DAY OF August, 1984.

BY: *[Signature]*
KENNETH SPILLIAS, CHAIRMAN

COUNTY ENGINEER

THIS PLAT IS HEREBY APPROVED FOR RECORD THIS 28 DAY OF August, 1984.

BY: *[Signature]*
HERBERT F. KAHLERT, P.E., COUNTY ENGINEER

ATTEST:
JOHN B. DUNKLE, CLERK
BOARD OF COUNTY COMMISSIONERS
BY: *[Signature]*
DEPUTY CLERK

0372-303

THIS INSTRUMENT WAS PREPARED BY MARCIA E. HANFORD IN THE OFFICES OF MERIDIAN SURVEYING AND MAPPING, INC., 2328 SOUTH CONGRESS AVENUE, WEST PALM BEACH, FLORIDA 33406.

49/28

Meridian Surveying and mapping inc. WEST PALM BEACH, FLORIDA

DRAWN	M.E.H.	DATE	JULY, 1984
CHECKED		SCALE	NONE
DRAWING NO.	83-P-048	AMENDED PLAT OF RAINBERRY PARK PLAT NO. 1	

DEDICATION

KNOW ALL MEN BY THESE PRESENTS THAT RAINBERRY PARK, INC., FORMERLY KNOWN AS PALMETTO 441 DEVELOPMENT CORP., A FLORIDA CORPORATION, OWNER OF THE LAND SHOWN HEREON AS THE AMENDED PLAT OF RAINBERRY PARK PLAT NO. 1, SITUATE IN SECTION 19, TOWNSHIP 47 SOUTH, RANGE 42 EAST, PALM BEACH COUNTY, FLORIDA, BEING AN AMENDED PLAT OF RAINBERRY PARK PLAT NO. 1, AS RECORDED IN PLAT BOOK 48 ON PAGES 105 AND 106 OF THE PUBLIC RECORDS OF SAID PALM BEACH COUNTY, MORE PARTICULARLY DESCRIBED AS FOLLOWS:

BEGINNING AT THE SOUTHWEST CORNER OF SAID PLAT, THENCE, ALONG THE PERIMETER OF SAID PLAT, N00 53'32"W A DISTANCE OF 580.00 FEET; THENCE N89 27'02"E A DISTANCE OF 1041.97 FEET TO BEGINNING OF A CURVE, HAVING A RADIUS OF 317.11 FEET, FROM WHICH A RADIAL LINE BEARS N00 22'58"W; THENCE N08 42'14"E ALONG THE ARC OF SAID CURVE, SUBTENDING A CENTRAL ANGLE OF 09 28'24", A DISTANCE OF 32.44 FEET; THENCE DEPARTING FROM AND RADIALLY TO SAID CURVE, S89 51'22"E A DISTANCE OF 30.00 FEET; THENCE S89 52'50"W A DISTANCE OF 25.85 FEET; THENCE S08 22'58"E A DISTANCE OF 110.80 FEET TO THE BEGINNING OF A CURVE, HAVING A RADIUS OF 229.00 FEET, FROM WHICH A RADIAL LINE BEARS N89 01'02"E; THENCE S08 42'14"E ALONG THE ARC OF SAID CURVE, SUBTENDING A CENTRAL ANGLE OF 58 42'14", A DISTANCE OF 234.95 FEET; THENCE DEPARTING FROM AND RADIALLY TO SAID CURVE, S80 54'27"W A DISTANCE OF 42.00 FEET; THENCE S25 24'02"W A DISTANCE OF 66.00 FEET; THENCE S08 22'58"E A DISTANCE OF 35.00 FEET; THENCE S89 27'02"W A DISTANCE OF 115.41 FEET TO THE POINT OF BEGINNING.

CONTAINING 14.9723 ACRES, MORE OR LESS.

HAS CAUSED THE SAME TO BE SURVEYED AND PLATTED AS SHOWN HEREON AND DO HEREBY DEDICATE AS FOLLOWS:

- TRACT E IS HEREBY DEDICATED TO THE PALM BEACH COUNTY BOARD OF COUNTY COMMISSIONERS FOR THE PERPETUAL USE OF THE PUBLIC FOR PROPER PURPOSES.
- TRACTS D1 THROUGH D5 ARE HEREBY DEDICATED TO, AND SHALL BE THE PERPETUAL MAINTENANCE OBLIGATION OF, THE RAINBERRY PARK HOMEOWNERS' ASSOCIATION, INC., ITS SUCCESSORS AND ASSIGNS, FOR PRIVATE ROAD PURPOSES INCLUDING, BUT NOT LIMITED TO, INGRESS, EGRESS, UTILITY, DRAINAGE, WITHOUT RECOURSE TO PALM BEACH COUNTY.
- THE UTILITY EASEMENTS AS SHOWN HEREON ARE HEREBY DEDICATED IN PERPETUITY FOR THE CONSTRUCTION AND MAINTENANCE OF UTILITY FACILITIES.
- THE DRAINAGE EASEMENTS SHOWN HEREON ARE HEREBY DEDICATED IN PERPETUITY TO, AND SHALL BE THE PERPETUAL MAINTENANCE OBLIGATION OF, THE RAINBERRY PARK HOMEOWNERS' ASSOCIATION, INC., ITS SUCCESSORS AND ASSIGNS, FOR THE CONSTRUCTION AND MAINTENANCE OF DRAINAGE FACILITIES, WITHOUT RECOURSE TO PALM BEACH COUNTY; HOWEVER, PALM BEACH COUNTY SHALL HAVE THE RIGHT, BUT NOT THE OBLIGATION, TO MAINTAIN THAT PORTION OF THE DRAINAGE SYSTEM, ENCOMPASSED BY THIS PLAT, WHICH IS ASSOCIATED WITH THE DRAINAGE OF PUBLIC ROADS.
- TRACTS A AND B ARE HEREBY DEDICATED TO, AND SHALL BE THE PERPETUAL MAINTENANCE OBLIGATION OF THE RAINBERRY PARK HOMEOWNERS' ASSOCIATION, INC., ITS SUCCESSORS AND ASSIGNS, FOR RECREATION PURPOSES AND OTHER PROPER PURPOSES, WITHOUT RECOURSE TO PALM BEACH COUNTY.
- THE WATER MANAGEMENT TRACT AND THE MAINTENANCE ACCESS EASEMENT, ARE HEREBY DEDICATED TO, AND SHALL BE THE PERPETUAL MAINTENANCE OBLIGATION OF THE RAINBERRY PARK HOMEOWNERS' ASSOCIATION, INC., ITS SUCCESSORS AND ASSIGNS, FOR WATER MANAGEMENT, ACCESS, AND OTHER PROPER PURPOSES, WITHOUT RECOURSE TO PALM BEACH COUNTY.
- TRACTS C, F, & G ARE HEREBY DEDICATED TO, AND SHALL BE THE PERPETUAL MAINTENANCE OBLIGATION OF, THE RAINBERRY PARK HOMEOWNERS' ASSOCIATION, INC., ITS SUCCESSORS AND ASSIGNS, FOR INGRESS, EGRESS, UTILITY, DRAINAGE, AND OTHER PROPER PURPOSES, WITHOUT RECOURSE TO PALM BEACH COUNTY.
- THE LIMITED ACCESS EASEMENTS (L.A.E.'S) SHOWN HEREON ARE HEREBY DEDICATED TO THE PALM BEACH COUNTY BOARD OF COUNTY COMMISSIONERS FOR CONTROL AND JURISDICTION OVER ACCESS RIGHTS.
- THE LIFT STATION EASEMENT SHOWN HEREON IS HEREBY DEDICATED TO AND SHALL BE THE PERPETUAL MAINTENANCE OBLIGATION OF PALM BEACH COUNTY UTILITIES, THEIR SUCCESSORS AND ASSIGNS, FOR THE CONSTRUCTION AND MAINTENANCE OF LIFT STATION FACILITIES AND APPURTENANCES THERETO.
- THE LANDSCAPE EASEMENTS SHOWN HEREON ARE HEREBY DEDICATED IN PERPETUITY FOR LANDSCAPE BUFFER PURPOSES, AND SHALL BE THE MAINTENANCE OBLIGATION OF THE FEE SIMPLE OWNER, HIS SUCCESSORS OR ASSIGNS, WITHOUT RECOURSE TO PALM BEACH COUNTY.

IN WITNESS WHEREOF, RAINBERRY PARK, INC., FORMERLY KNOWN AS PALMETTO 441 DEVELOPMENT CORP., A FLORIDA CORPORATION HAS CAUSED THESE PRESENTS TO BE SIGNED BY ITS PRESIDENT AND ATTESTED TO BY ITS SECRETARY AND ITS CORPORATION SEAL TO BE AFFIXED HERETO BY AND WITH THE AUTHORITY OF ITS BOARD OF DIRECTORS, THIS 28th DAY OF August, 1984.

ATTEST: *[Signature]* ROY FLACK, SECRETARY
BY: *[Signature]* RICHARD SIEMENS, PRESIDENT

ACKNOWLEDGEMENT

STATE OF FLORIDA)
COUNTY OF PALM BEACH)

BEFORE ME PERSONALLY APPEARED RICHARD SIEMENS AND ROY FLACK, TO ME WELL KNOWN AND KNOWN TO ME TO BE THE INDIVIDUALS DESCRIBED IN AND WHO EXECUTED THE FOREGOING INSTRUMENT AS PRESIDENT AND SECRETARY OF RAINBERRY PARK, INC., FORMERLY KNOWN AS PALMETTO 441 DEVELOPMENT CORP., A FLORIDA CORPORATION, AND ACKNOWLEDGED TO AND BEFORE ME THAT THEY EXECUTED SAID INSTRUMENT AS SUCH OFFICERS OF SAID CORPORATION, AND THAT THE SEAL AFFIXED HERETO IS THE CORPORATE SEAL OF SAID CORPORATION AND THAT IT WAS AFFIXED IN OFFICIAL RECORD BOOK 1229 AT PAGE 0774 OF THE PUBLIC RECORDS OF PALM BEACH COUNTY, FLORIDA, AND THAT SAID INSTRUMENT IS THE FREE ACT AND DEED OF SAID CORPORATION.

WITNESS MY HAND AND OFFICIAL SEAL THIS 28th DAY OF August, 1984.
MY COMMISSION EXPIRES: 10/3/88
[Signature]
NOTARY PUBLIC

MORTGAGEE'S CONSENT

STATE OF FLORIDA)
COUNTY OF PALM BEACH)

AMERICAN SAVINGS AND LOAN ASSOCIATION OF FLORIDA, HEREBY CERTIFIES THAT IT IS A HOLDER OF A MORTGAGE UPON THE PROPERTY HEREON DESCRIBED AND DOES HEREBY JOIN IN AND CONSENT TO THE DEDICATION OF SAID LAND BY THE OWNERS THEREOF, AS SHOWN HEREON AND AGREES THAT ITS MORTGAGE WHICH IS DESCRIBED IN OFFICIAL RECORD BOOK 1229 AT PAGE 0774 OF THE PUBLIC RECORDS OF PALM BEACH COUNTY, FLORIDA, SHALL BE SUBORDINATED TO SAID DEDICATION.

IN WITNESS WHEREOF, AMERICAN SAVINGS AND LOAN ASSOCIATION OF FLORIDA, HAS CAUSED THESE PRESENTS TO BE SIGNED BY ITS VICE-PRESIDENT AND ATTESTED TO BY ITS ASSISTANT SECRETARY AND ITS CORPORATE SEAL TO BE AFFIXED HERETO BY AND WITH THE AUTHORITY OF ITS BOARD OF DIRECTORS THIS 28th DAY OF August, 1984.

ATTEST: *[Signature]* BY: *[Signature]*
ASST. SECRETARY VICE PRESIDENT

ACKNOWLEDGEMENT

STATE OF FLORIDA)
COUNTY OF PALM BEACH)

BEFORE ME PERSONALLY APPEARED *[Signatures]* TO ME WELL KNOWN AND KNOWN TO ME TO BE THE INDIVIDUALS DESCRIBED IN AND WHO EXECUTED THE FOREGOING INSTRUMENT AS VICE-PRESIDENT AND ASSISTANT SECRETARY OF AMERICAN SAVINGS AND LOAN ASSOCIATION OF FLORIDA, AND SEVERALLY ACKNOWLEDGED TO AND BEFORE ME THAT THEY EXECUTED SAID INSTRUMENT AS SUCH OFFICERS OF SAID CORPORATION, AND THAT THE SEAL AFFIXED HERETO IS THE CORPORATE SEAL OF SAID CORPORATION AND THAT IT WAS AFFIXED HERETO BY DUE AND REGULAR CORPORATE AUTHORITY, AND THAT SAID INSTRUMENT IS THE FREE ACT AND DEED OF SAID CORPORATION.

WITNESS MY HAND AND OFFICIAL SEAL THIS 28th DAY OF August, 1984.
MY COMMISSION EXPIRES: 10/3/88
[Signature]
NOTARY PUBLIC

TITLE CERTIFICATION

WE, CHICAGO TITLE INSURANCE COMPANY, A TITLE INSURANCE COMPANY DULY LICENSED IN THE STATE OF FLORIDA, DO HEREBY CERTIFY THAT WE HAVE EXAMINED THE TITLE TO THE HEREON DESCRIBED PROPERTY; THAT WE FIND THE TITLE TO THE PROPERTY IS VESTED TO RAINBERRY PARK, INC., FORMERLY KNOWN AS PALMETTO 441 DEVELOPMENT CORP.; THAT THE CURRENT TAXES HAVE BEEN PAID; THAT THE PROPERTY IS ENCOMPASSED BY THE MORTGAGES SHOWN HEREON; THAT ALL MORTGAGES ARE SHOWN AND ARE TRUE AND CORRECT, AND THERE ARE NO OTHER ENCUMBRANCES OF RECORD.

CHICAGO TITLE INSURANCE COMPANY
DATE: *[Signature]* BY: *[Signature]*
TITLE OFFICER

SEAL
RAINBERRY
PARK, INC.

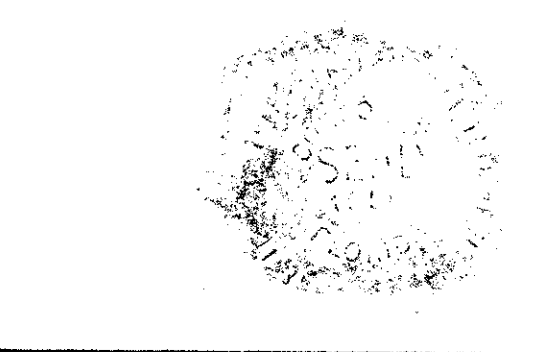
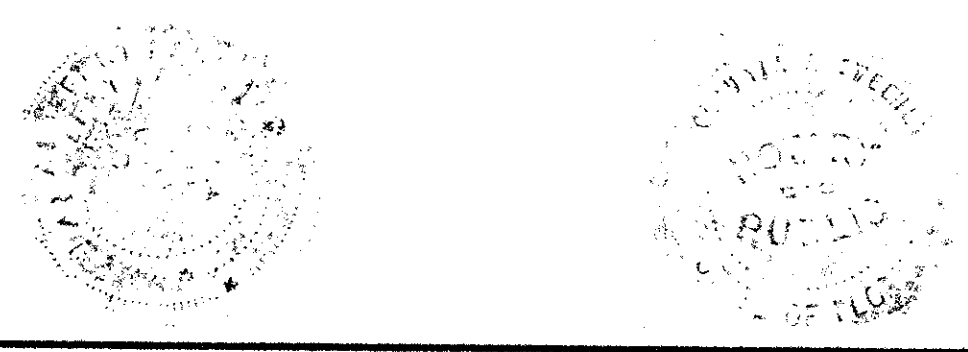
SEAL
NOTARY
PUBLIC

SEAL
AMERICAN SAVINGS
AND LOAN ASSOC.
OF FLORIDA

SEAL
NOTARY
PUBLIC

SEAL
PROFESSIONAL
LAND SURVEYOR

SEAL
COUNTY
ENGINEER



Meridian Surveying and mapping inc. WEST PALM BEACH, FLORIDA

DRAWN	M.E.H.	DATE	JULY, 1984
CHECKED		SCALE	NONE
DRAWING NO.	83-P-048	AMENDED PLAT OF RAINBERRY PARK PLAT NO. 1	

DRAWING NUMBER
49/28

DRAWING NUMBER
49/28

DRAWING NUMBER
49/28

DRAWING NUMBER
49/28