

49/29

49/29

AMENDED PLAT OF RAINBERRY PARK PLAT NO. 1

PART OF RAINBERRY OF WEST BOCA A P.U.D.

SITUATE IN SECTION 19, TOWNSHIP 47 SOUTH, RANGE 42 EAST,
PALM BEACH COUNTY, FLORIDA, BEING AN AMENDED PLAT OF
RAINBERRY PARK PLAT NO. 1 (P.B. 48, PGS. 105 - 106)
SHEET 2 OF 2

STATE OF FLORIDA
COUNTY OF PALM BEACH

THIS PLAT WAS FILED FOR
RECORD AT _____
THIS _____ DAY OF _____
AD, 1984 AND DULY RECORDED
IN PLAT BOOK _____ ON PAGES
_____ AND _____

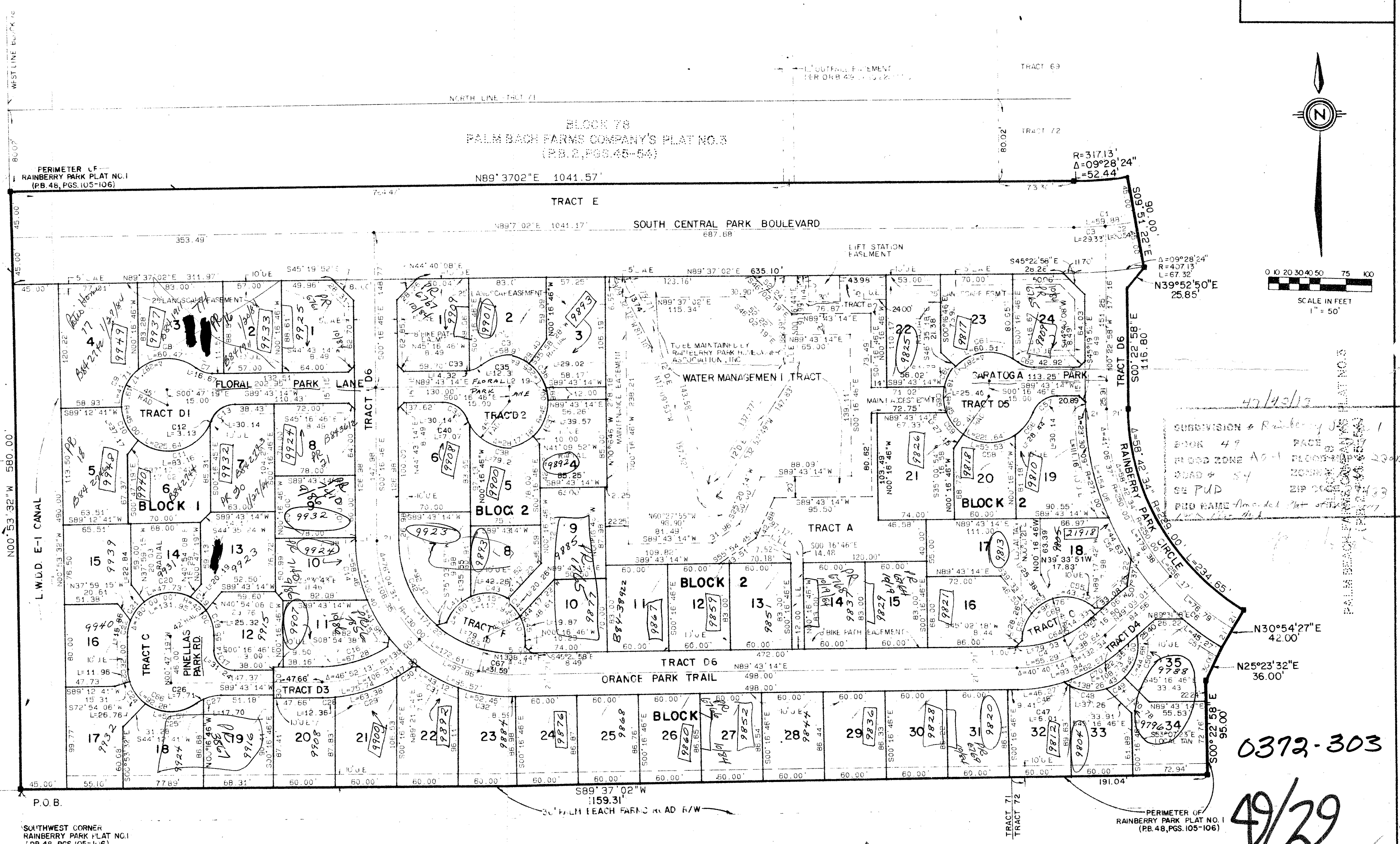
JOHN B. DUNKLE, CLERK
BY: _____, D.C.

NO.	DELTA	RADIUS	LENGTH
C1	9' 28" 24"	362.13	59.88
C2	4' 49" 56"	362.13	30.54
C3	4' 38" 28"	362.13	29.33
C4	23' 56" 20"	132.34	55.29
C5	16' 43" 54"	132.34	38.64
C6	17' 35" 57"	250.00	76.79
C7	38' 12" 50"	25.00	16.67
C8	76' 59" 43"	45.00	60.47
C9	53' 06" 05"	45.00	41.71
C10	47' 19" 20"	45.00	37.17
C11	105' 53" 17"	45.00	83.18
C12	3' 58" 54"	45.00	3.13
C13	69' 04" 29"	25.00	30.14
C14	22' 10" 55"	151.00	58.46
C15	15' 54" 57"	151.00	41.95
C16	33' 31" 23"	115.00	67.28
C17	89' 29" 27"	42.00	31.24
C18	34' 32" 05"	42.00	25.32
C19	27' 32" 54"	42.00	20.19
C20	65' 06" 56"	42.00	47.73
C21	31' 09" 34"	42.00	22.44
C22	21' 38" 30"	42.00	15.86
C23	16' 18" 35"	42.00	11.96
C24	36' 30" 30"	42.00	26.76
C25	73' 04" 29"	42.00	53.57
C26	11' 03" 02"	40.00	7.71
C27	25' 24" 07"	40.00	17.70
C28	4' 53" 01"	145.00	12.36
C29	25' 02" 43"	145.00	63.38
C30	7' 04" 29"	145.00	17.90
C31	16' 21" 41"	151.00	43.12
C32	19' 54" 12"	151.00	52.46
C33	9' 54" 25"	25.00	4.32
C34	74' 28" 01"	45.00	58.49
C35	28' 18" 22"	25.00	12.35
C36	36' 57" 17"	45.00	29.02
C37	50' 23" 17"	45.00	39.57
C38	100' 57" 32"	45.00	79.29
C39	69' 04" 31"	25.00	30.14
C40	9' 00" 06"	45.00	7.07
C41	48' 29" 41"	42.00	35.55
C42	48' 25" 21"	109.00	92.12
C43	57' 39" 07"	42.00	42.16
C44	27' 38" 08"	45.00	20.26
C45	27' 06" 19"	42.00	19.87
C46	17' 17" 29"	153.34	46.27
C47	7' 39" 14"	45.00	6.01
C48	47' 26" 18"	45.00	37.25
C49	26' 27" 36"	45.00	20.78
C50	56' 53" 34"	45.00	44.68
C51	9' 34" 18"	271.00	45.27
C52	38' 33" 02"	42.00	28.26
C53	34' 37" 46"	42.00	25.38
C54	9' 28" 11"	274.00	44.63
C55	58' 49" 27"	42.00	43.12
C56	36' 12" 26"	45.00	28.44
C57	69' 04" 31"	25.00	30.14
C58	68' 09" 45"	45.00	53.53
C59	34' 34" 18"	45.00	27.15
C60	31' 29" 24"	45.00	24.73
C61	77' 02" 49"	45.00	60.51
C62	38' 12" 48"	25.00	16.67
C63	41' 34" 39"	109.00	79.10
C64	40' 40" 14"	111.34	79.03
C65	32' 20" 05"	45.00	25.40
C66	125' 53" 34"	42.00	92.28
C67	13' 55" 29"	130.00	31.59
C68	15' 31" 05"	45.00	12.19
C69	132' 00" 14"	42.00	95.76
C70	23' 22" 45"	153.34	62.57
C71	9' 28" 24"	317.13	52.44

DRAWING NUMBER

DRAWING NUMBER

DRAWING NUMBER



Meridian Surveying and Mapping, Inc.
WEST PALM BEACH, FLORIDA

DRAWN: M.E.H. DATE: 7/12/84
CHECKED: R.A.H. SCALE: 1" = 50'
DRAWING NO: 83-P-048

AMENDED PLAT RAINBERRY PARK PLAT NO. 1