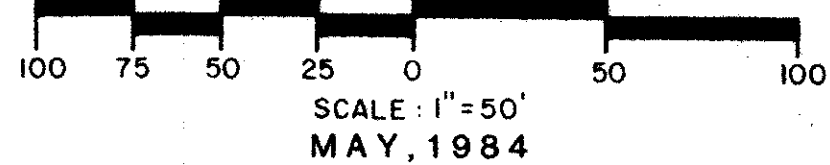


49/42

THE COLONY AT L'ERMITAGE

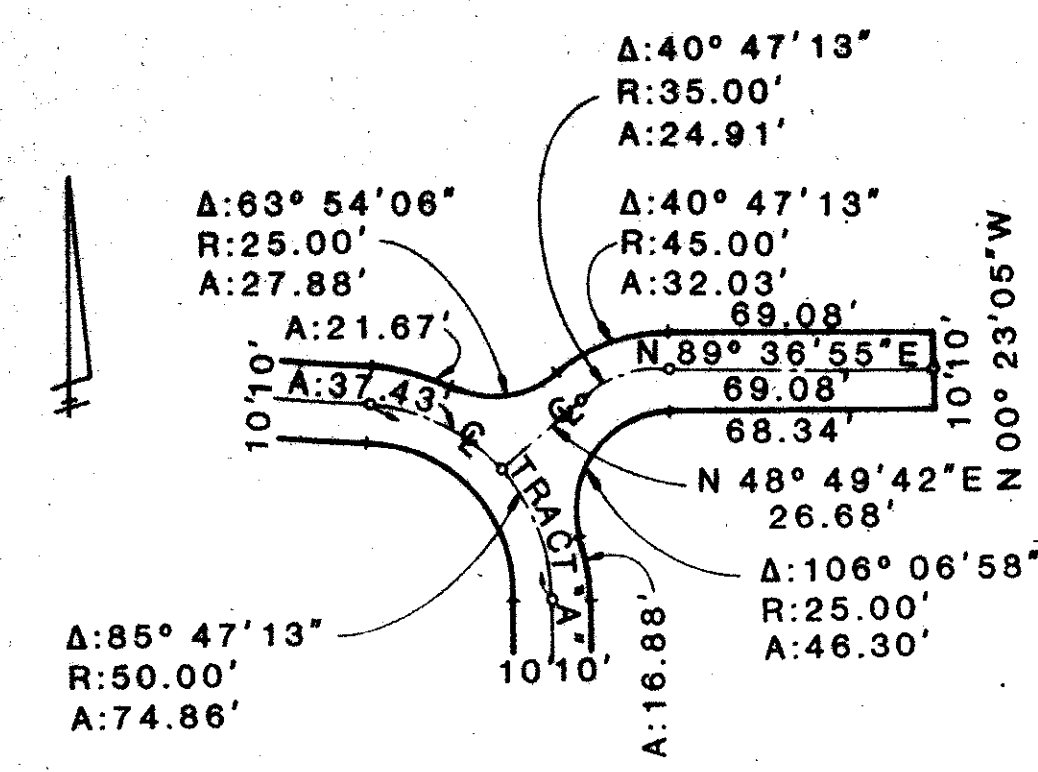
BEING A REPLAT OF A PORTION OF TRACT "74" OF THE PLAT OF "BOCA DEL MAR NO. 7" AS RECORDED IN PLAT BOOK 30, PAGES 210-217 INCLUSIVE, TOGETHER WITH TRACT "C" OF THE PLAT OF "BOCA CLUB COLONY PHASE I", AS RECORDED IN PLAT BOOK 37, PAGES 85 AND 86 BOTH PLATS OF THE PUBLIC RECORDS OF PALM BEACH COUNTY, FLORIDA.

SECTION 34, TWP. 47 S., RGE. 42 E.

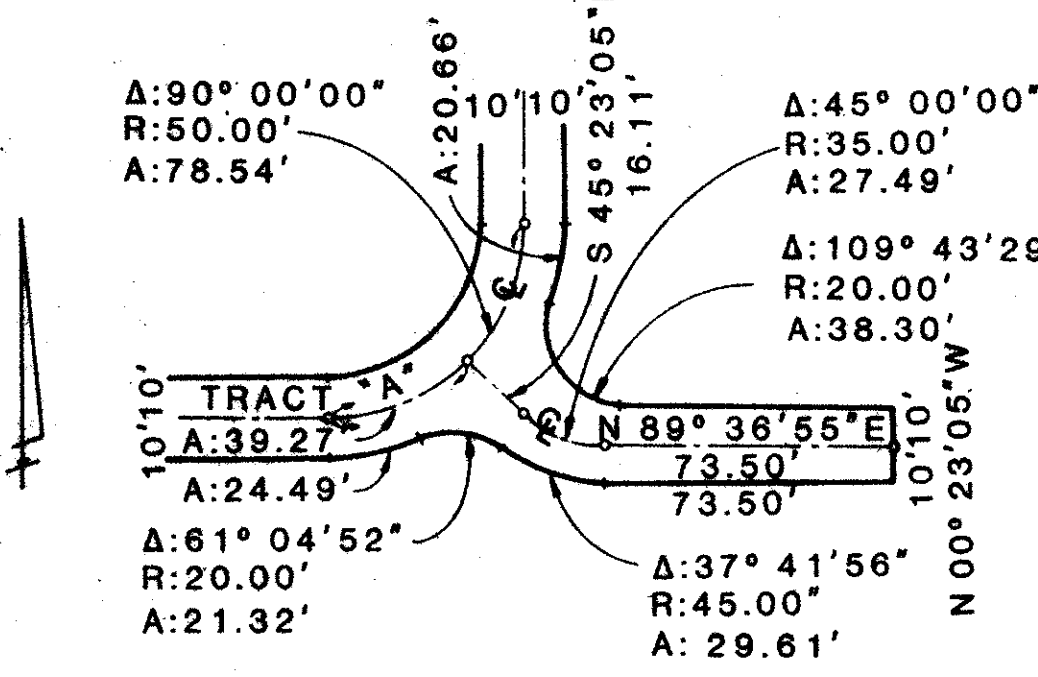


49/42

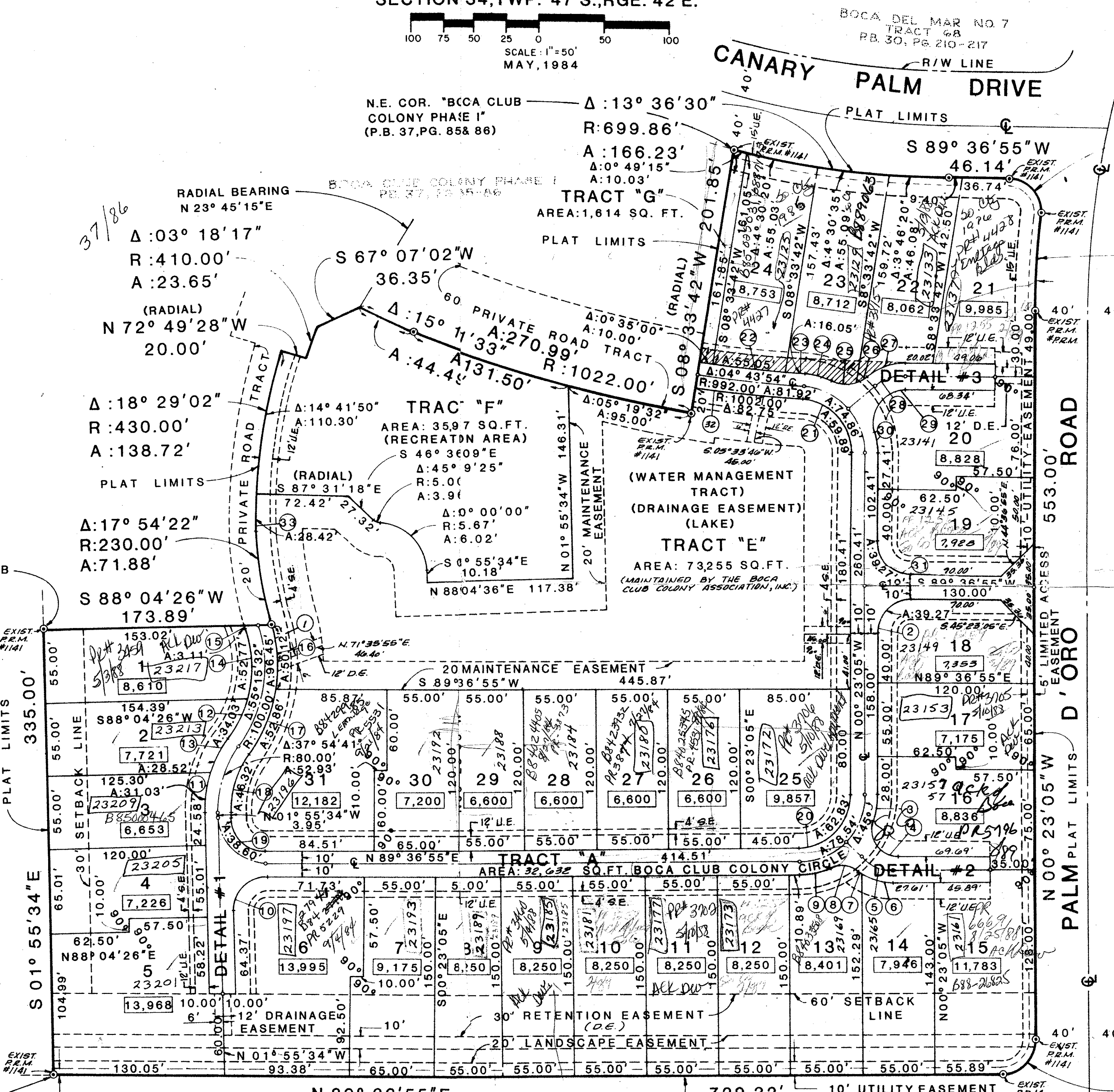
SHEET 3 OF 3



DETAIL #3
1"=50'



DETAIL #2
1"=50'



NO.	DELTA	RADIUS	ARC
1	16° 07' 19"	110.00'	30.95'
2	90° 00' 00"	25.00'	39.27'
3	19° 43' 29"	60.00'	20.66'
4	109° 43' 29"	20.00'	38.30'
5	45° 00' 00"	35.00'	27.49'
6	37° 29' 24"	45.00'	29.45'
7	00° 12' 32"	45.00'	00.16'
8	61° 04' 52"	20.00'	21.32'
9	23° 22' 56"	60.00'	24.49'
10	91° 32' 29"	25.00'	39.94'
11	19° 45' 10"	90.00'	31.03'
12	21° 39' 45"	90.00'	34.03'
13	18° 09' 31"	90.00'	28.52'
14	33° 35' 48"	90.00'	52.77'
15	00° 42' 42"	250.00'	3.11'
16	23° 06' 27"	110.00'	30.12'
17	27° 31' 53"	110.00'	52.86'
18	37° 54' 41"	70.00'	46.32'
19	88° 27' 31"	25.00'	38.60'
20	90° 00' 00"	40.00'	62.83'
21	85° 47' 13"	40.00'	59.89'
22	03° 12' 43"	982.00'	55.05'
23	00° 56' 11"	982.00'	16.05'
24	20° 41' 36"	60.00'	21.67'
25	41° 13' 55"	25.00'	17.99'
26	22° 40' 11"	25.00'	9.89'
27	40° 47' 13"	45.00'	32.03'
28	40° 47' 13"	35.00'	24.91'
29	106° 06' 58"	25.00'	46.30'
30	16° 06' 55"	60.00'	16.88'
31	90° 00' 00"	25.00'	39.27'
32	02° 59' 59"	1002.00'	52.45'
33	03° 47' 12"	430.00'	28.42'

NOTES

- BEARINGS ARE BASED ON THE WEST LINE OF "TRACT 74" (BEING S. 01° 55' 34" E.) OF THE PLAT OF "BOCA DEL MAR NO. 7", AS RECORDED IN PLAT BOOK 30, PAGES 210 THRU 217 OF THE PUBLIC RECORDS OF PALM BEACH COUNTY, FLORIDA.
- BUILDING SETBACK LINES SHALL BE AS REQUIRED BY THE ORDINANCES OF PALM BEACH COUNTY, FLORIDA.
- NO BUILDINGS OR ANY KIND OF CONSTRUCTION SHALL BE PLACED ON UTILITY OR DRAINAGE EASEMENTS.
- NO STRUCTURES, TREES OR SHRUBS SHALL BE PLACED ON DRAINAGE OR RETENTION EASEMENTS.
- APPROVAL OF LANDSCAPING ON UTILITY EASEMENTS SHALL BE ONLY WITH APPROVAL OF ALL UTILITIES OCCUPYING SAME.
- IN INSTANCES WHERE DRAINAGE AND UTILITY EASEMENTS INTERSECT, THE CONSTRUCTION, OPERATION AND MAINTENANCE OF UTILITIES IN THESE AREAS OF INTERSECTION SHALL NOT INTERFERE WITH THE CONSTRUCTION, OPERATION AND MAINTENANCE OF DRAINAGE FACILITIES LOCATED THEREIN.

LEGEND

- U.E. INDICATES UTILITY EASEMENT
- D.E. INDICATES DRAINAGE EASEMENT
- S.E. INDICATES SIDEWALK EASEMENT
- ⊙ INDICATES PERMANENT REFERENCE MONUMENT (P.R.M.)
- INDICATES PERMANENT CONTROL POINT (P.C.P.)
- 6,600 INDICATES LOT SQUARE FOOTAGE
- ▨ INDICATES DRAINAGE EASEMENT

P.O.B. SW. COR. TRACT 74

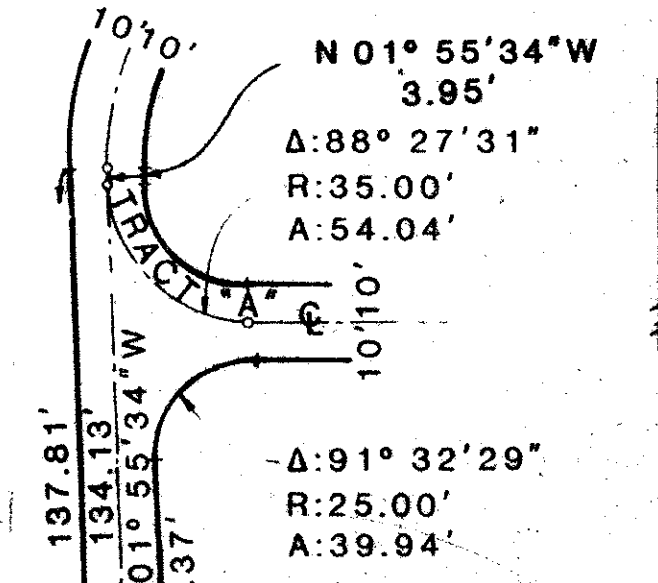
THIS INSTRUMENT PREPARED BY
LARRY BIRMINGHAM OF
DANIEL CARNAHAN
CONSULTING ENGINEERS, INC.
6191 W. ATLANTIC BLVD., MARGATE, FLA.
MAY, 1984 8311042 RCW

DIVISION * The Colony at L'Ermitage
BOOK 49 PAGE 42
FLOOD ZONE A-1 FLOOD MAP # 2-4-83
QUAD * 37 ZONING AR
SE PUD ZIP CODE 33433
PUD NAME The Colony at L'Ermitage

DETAIL #1
1"=50'

The Colony AT L'ERMITAGE

0205-020



DETAIL #1
1"=50'

SIDEWALK REQUIRED