

49/50

49/50

WESTPORT INDUSTRIAL PARK

TRACT 50 AND WEST ONE-HALF (W. 1/2) OF TRACT 49, BLOCK 5, TOGETHER WITH TRACT 25 AND PART OF TRACT 26, BLOCK 6, PALM BEACH FARMS COMPANY PLAT NO. 3, LYING IN SECTION 33, TOWNSHIP 43 SOUTH, RANGE 42 EAST,

PALM BEACH COUNTY, FLORIDA.

FEBRUARY, 1984 SHEET 2 of 2

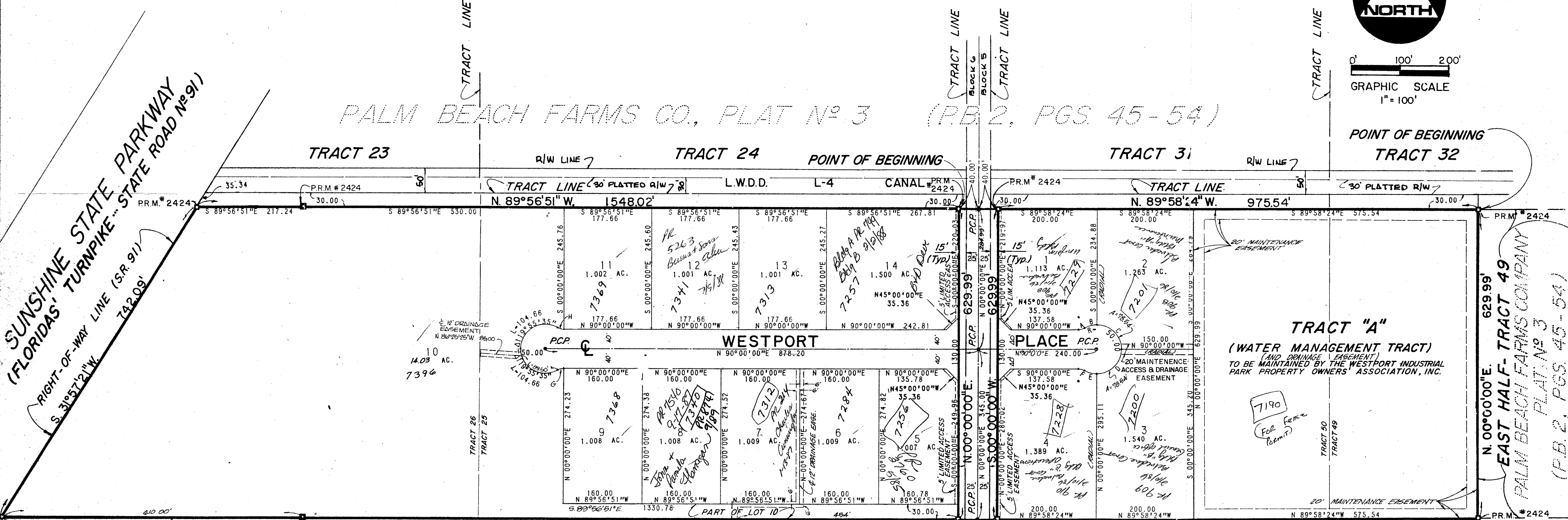
STATE OF FLORIDA
COUNTY OF PALM BEACH
THIS PLAT WAS FILED FOR
RECORD AT _____ DAY OF
THIS _____ AD, 1984 AND
DULY RECORDED IN PLAT BOOK
_____ ON PAGES _____ AND

JOHN B. DUNKLE, CLERK
CIRCUIT COURT
BY: _____ DC



0' 100' 200'
GRAPHIC SCALE
1" = 100'

POINT OF BEGINNING
TRACT 32



PALM BEACH FARMS CO., PLAT N° 3 (P.B. 2, PGS. 45-54)

SUNSHINE STATE PARKWAY
(FLORIDAS' TURNPIKE - STATE ROAD N° 91)
RIGHT-OF-WAY LINE (S.R. 91)
S. 31°57'21"W 742.09'

RADIUS	DELTA	ARC LGT	TANGENT
A	25.00	29°55'35"	13.06 6.68
B	50.00	29°55'35"	26.12 13.36
C	50.00	90°00'00"	78.54 50.00
D	50.00	90°00'00"	78.54 50.00
E	50.00	29°55'35"	26.12 13.36
F	25.00	29°55'35"	13.06 6.68
G	25.00	29°55'35"	13.06 6.68
H	25.00	29°55'35"	13.06 6.68

BEARING NOTE:
BEARINGS SHOWN HEREON ARE RELATIVE TO AN ASSUMED BEARING OF NORTH 00°00'00"E/81°, ALONG THE CENTERLINE OF CLEAR ROAD.

PALM BEACH FARMS CO., PLAT N° 3 (P.B. 2, PGS. 45-54)

HENSTAD STREET PARK
P.B. 42, PG. 104

Need site plan approved per 88-48
12/5/84
Jup 3
2/2/85/1/2

See conditions
Lot 10 is different
0458-001
TRACT 52

BENCH MARK
land surveying and mapping inc.

CONRAD W. SCHAEFER CONSULTING ENGINEERS, INC.
PALM BEACH COUNTY, FLORIDA

WESTPORT INDUSTRIAL PARK 49/50