

49/52

52

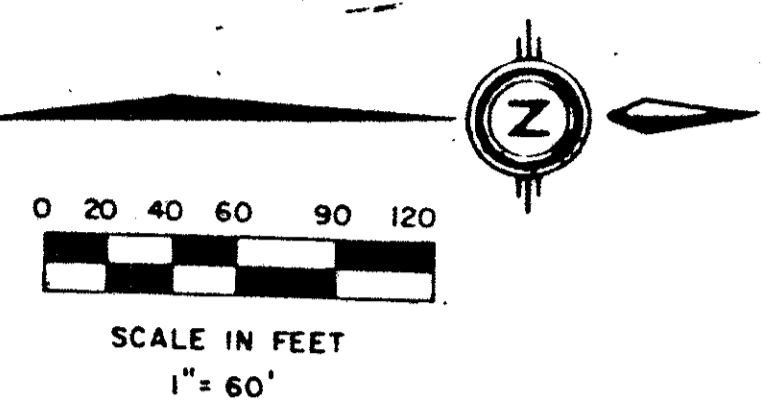
# PALM CHASE (A PART OF SOUTHWICK ACRES P.U.D.)

SITUATE IN SECTION 26, TOWNSHIP 45 SOUTH, RANGE 42 EAST, PALM BEACH COUNTY, FLORIDA, BEING A REPLAT OF A PORTION OF TRACTS 25 THROUGH 32 OF THE SUBDIVISION OF SECTION 26 (PB 6 PG 26).

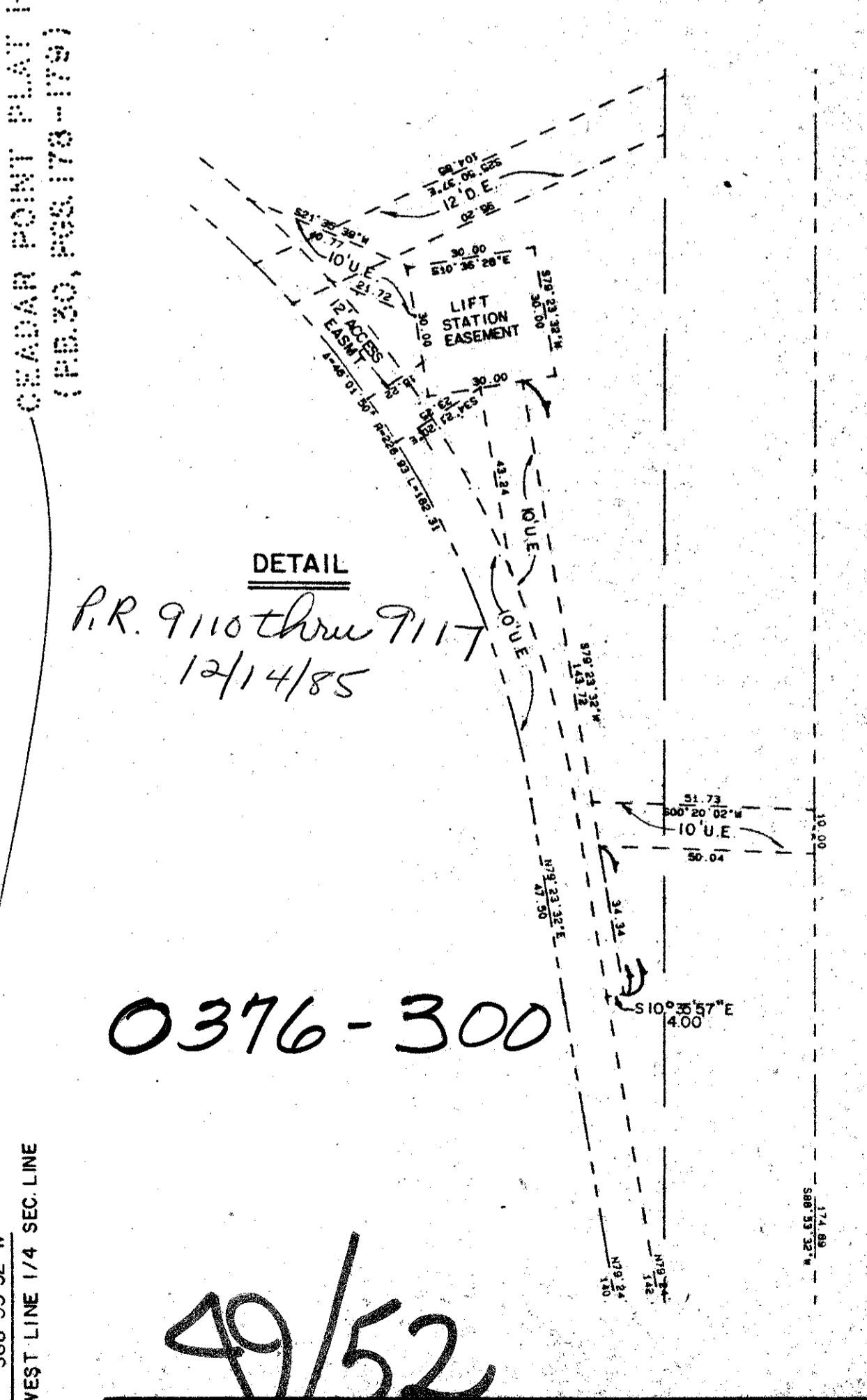
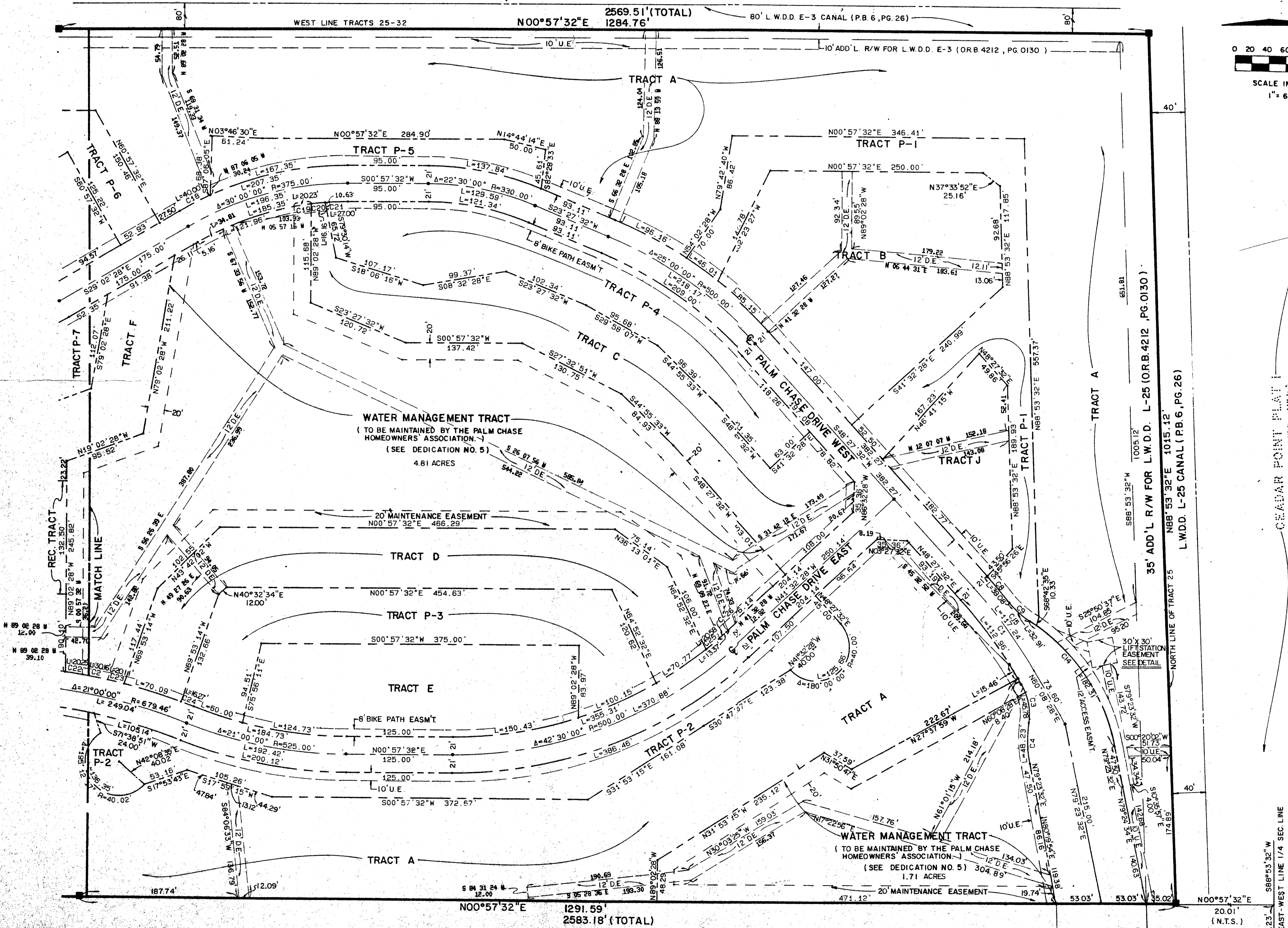
SHEET 2 OF 3

SUBDIVISION OF SECTION 26  
(PB 6, PG 26)

STATE OF FLORIDA  
COUNTY OF PALM BEACH  
THIS PLAT WAS FILED FOR  
RECORD AT \_\_\_\_\_ DAY OF \_\_\_\_\_  
AD, 1988 AND DULY RECORDED  
IN PLAT BOOK \_\_\_\_\_ ON PAGES  
\_\_\_\_\_ AND \_\_\_\_\_  
JOHN B. DUNKLE, CLERK  
CIRCUIT COURT  
BY: \_\_\_\_\_, D.C.



NO.	DELTA	RADIUS	LENGTH
C1	11° 40' 56"	575.00	117.24
C2	2° 28' 02"	700.46	30.16
C3	39° 18' 52"	66.72	45.78
C4	20° 03' 51"	437.71	48.23
C5	29° 46' 06"	139.25	72.95
C6	27° 01' 57"	80.52	37.99
C7	2° 44' 08"	80.52	3.84
C8	3° 45' 25"	596.00	39.08
C9	18° 51' 15"	100.00	32.91
C10	31° 32' 20"	145.48	80.08
C11	31° 32' 20"	64.38	35.44
C12	10° 19' 02"	576.00	103.72
C13	2° 53' 02"	596.00	30.00
C14	46° 01' 50"	226.93	182.31
C15	11° 40' 56"	596.00	121.52
C16	2° 04' 08"	554.00	20.00
C17	2° 43' 29"	554.00	25.95
C18	5° 47' 15"	396.00	40.00
C19	3° 16' 28"	354.00	20.23
C20	2° 36' 58"	354.00	16.16
C21	4° 22' 12"	354.00	27.00
C22	1° 39' 23"	700.46	20.25
C23	1° 38' 42"	700.46	20.11
C24	1° 19' 50"	700.46	16.27
C25	2° 27' 41"	479.00	20.58
C26	1° 35' 57"	479.00	13.37



DRAWING NUMBER

DRAWING NUMBER

DRAWING NUMBER

PLAN HOLD CORPORATION • IRVINE, CALIFORNIA  
RENDERED BY NUMBER 07549

Meridian Surveying and mapping inc.  
WEST PALM BEACH, FLORIDA

DATE: NOV. 1983  
SCALE: 1" = 60'  
DRAWING NO: 83-P-073

PALM CHASE

PALM CHASE DRIVE (P.B. 6, PG. 164)  
N.E. CORNER SE 1/4 SECTION 26/45/42

SUBDIVISION OF SECTION 26  
(PB 6, PG 26 ABANDONED)