

49/53

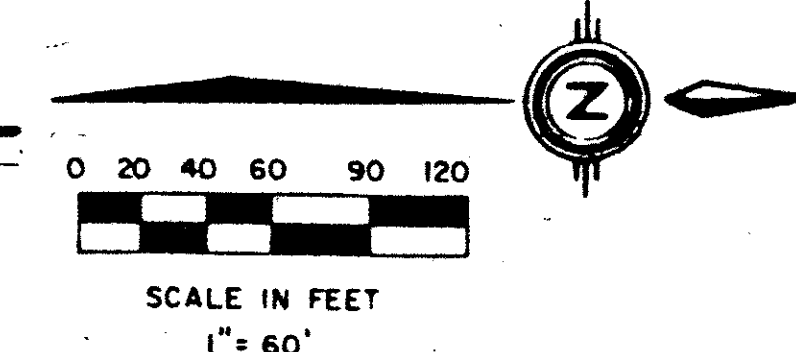
# PALM CHASE (A PART OF SOUTHWICK P.U.D.)

SITUATE IN SECTION 26, TOWNSHIP 45 SOUTH, RANGE 42 EAST, PALM BEACH COUNTY, FLORIDA, BEING A REPLAT OF A PORTION OF TRACTS 25 THROUGH 32 OF THE SUBDIVISION OF SECTION 26 (PB 6 PG 26).

SHEET 3 OF 3

53

STATE OF FLORIDA  
COUNTY OF PALM BEACH  
THIS PLAT WAS FILED FOR  
RECORD AT \_\_\_\_\_  
THIS \_\_\_\_\_ DAY OF \_\_\_\_\_  
AD, 1984 AND DULY RECORDED  
IN PLAT BOOK \_\_\_\_\_ ON PAGES  
AND \_\_\_\_\_  
JOHN B. DUNKLE, CLERK  
CIRCUIT COURT  
BY: \_\_\_\_\_, D.C.



NO.	DELTA	RADIUS	LENGTH
C1	2° 28' 02"	700.46	30.16
C2	1° 38' 23"	700.46	20.25
C3	1° 38' 42"	700.46	20.11
C4	1° 57' 42"	254.00	8.70
C5	10° 20' 26"	221.00	39.89
C6	5° 18' 16"	295.00	27.40
C7	6° 16' 55"	325.46	35.68

P.U.D. TABULAR DATA

SITE AREA	= 60 A.C.
UNITS	= 350 UNITS
GROSS DENSITY	= 5.83 UNITS/AC
RESIDENTIAL USE	= 100%
BUILDING AREA	= 9.85 A.C.
WATER BODIES	= 8.0 A.C.
STREET R.O.W.	= 6.17 A.C.
CANAL R.O.W. DEDICATION	= 1.4 A.C.
PAVED AREA	= 8.27 A.C.
PARKING REQUIRED	= 700 SPACES
PARKING PROVIDED	= 725 SPACES

SUBDIVISION \* Palm Chase  
BOOK 47 PAGE 53  
FLOOD ZONE A(10) FLOOD MAP # 180B  
CHAD #25 ZONING  
SS ZIP CODE 33436  
PUD NAME

DS-SE (PUD)

0376-300

49/53

Meridian Surveying and mapping inc. WEST PALM BEACH, FLORIDA

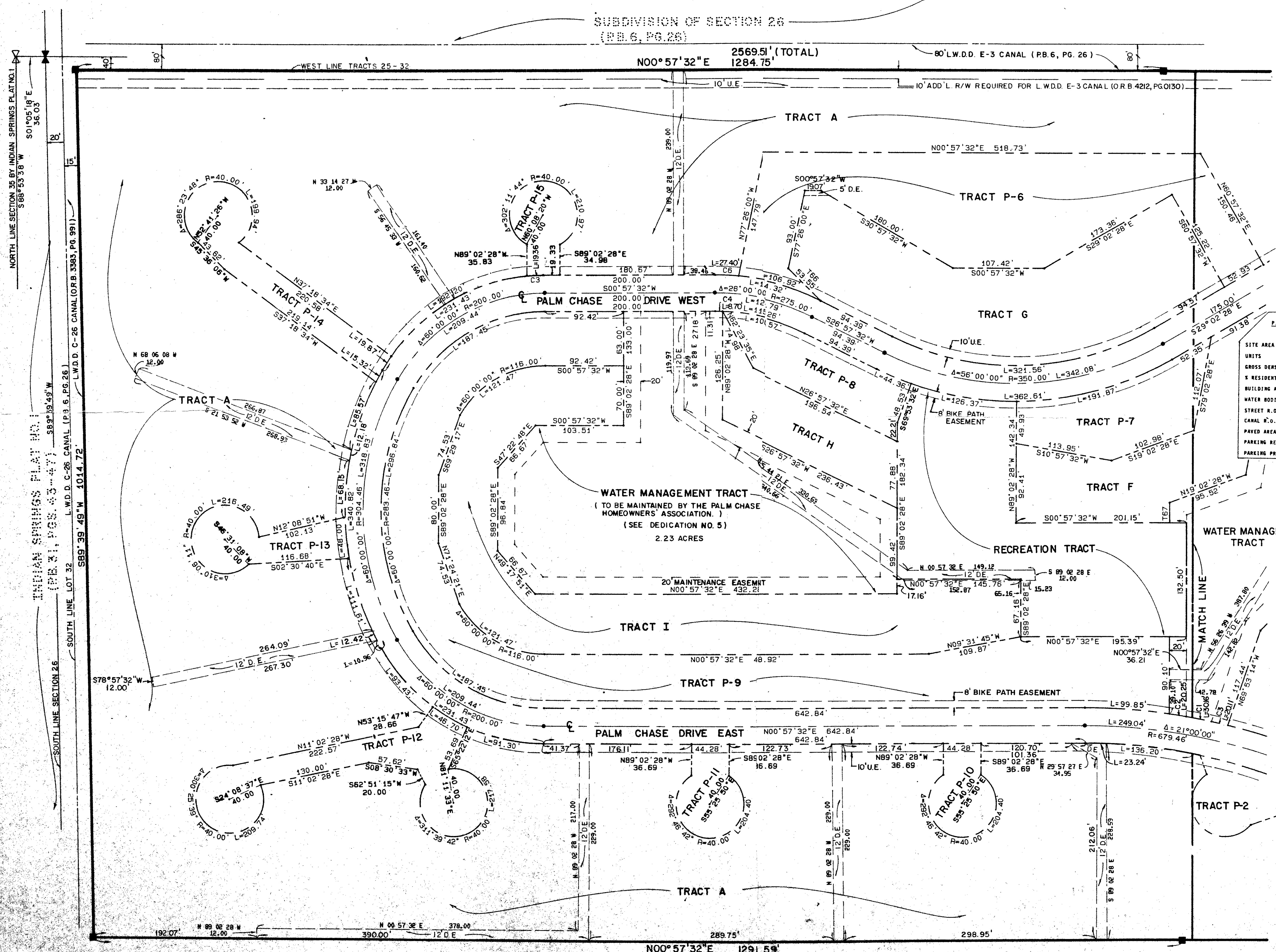
DRAWN	M.E.H.	DATE	OV. 1983
CHECKED	SCALE	1" = 60'	
DRAWING NO.	83-P-073		

PALM CHASE

DRAWING NUMBER

DRAWING NUMBER

DRAWING NUMBER



SUBDIVISION OF SECTION 26  
(PB. 6, PG. 26)  
2569.51' (TOTAL)  
1284.75'

SUBDIVISION OF SECTION 26  
(PB. 6, PG. 26 ABANDONED)  
1291.59' (TOTAL)  
2583.18'

PLAN HOLD CORPORATION • IRVINE, CALIFORNIA  
RECORDED BY NUMBER 5734