

49/59

49/59

A PLANNED UNIT DEVELOPMENT IN CYPRESS LAKES
CYPRESS LAKES-PLAT NO. 8
SECTION 14, TOWNSHIP 43 SOUTH, RANGE 42 EAST
PALM BEACH COUNTY, FLORIDA
IN 2 SHEETS SHEET NO. 2
MARCH 1984

STATE OF FLORIDA }
COUNTY OF PALM BEACH }
This Plat was filed for record at _____ M.
this _____ day of _____
19 _____, and duly recorded in Plat Book No. _____
on page _____
JOHN B. DUNKLE, Clerk Circuit Court
By _____, D. C.

NOTE: ALL LINES ARE RADIAL UNLESS OTHERWISE SHOWN.

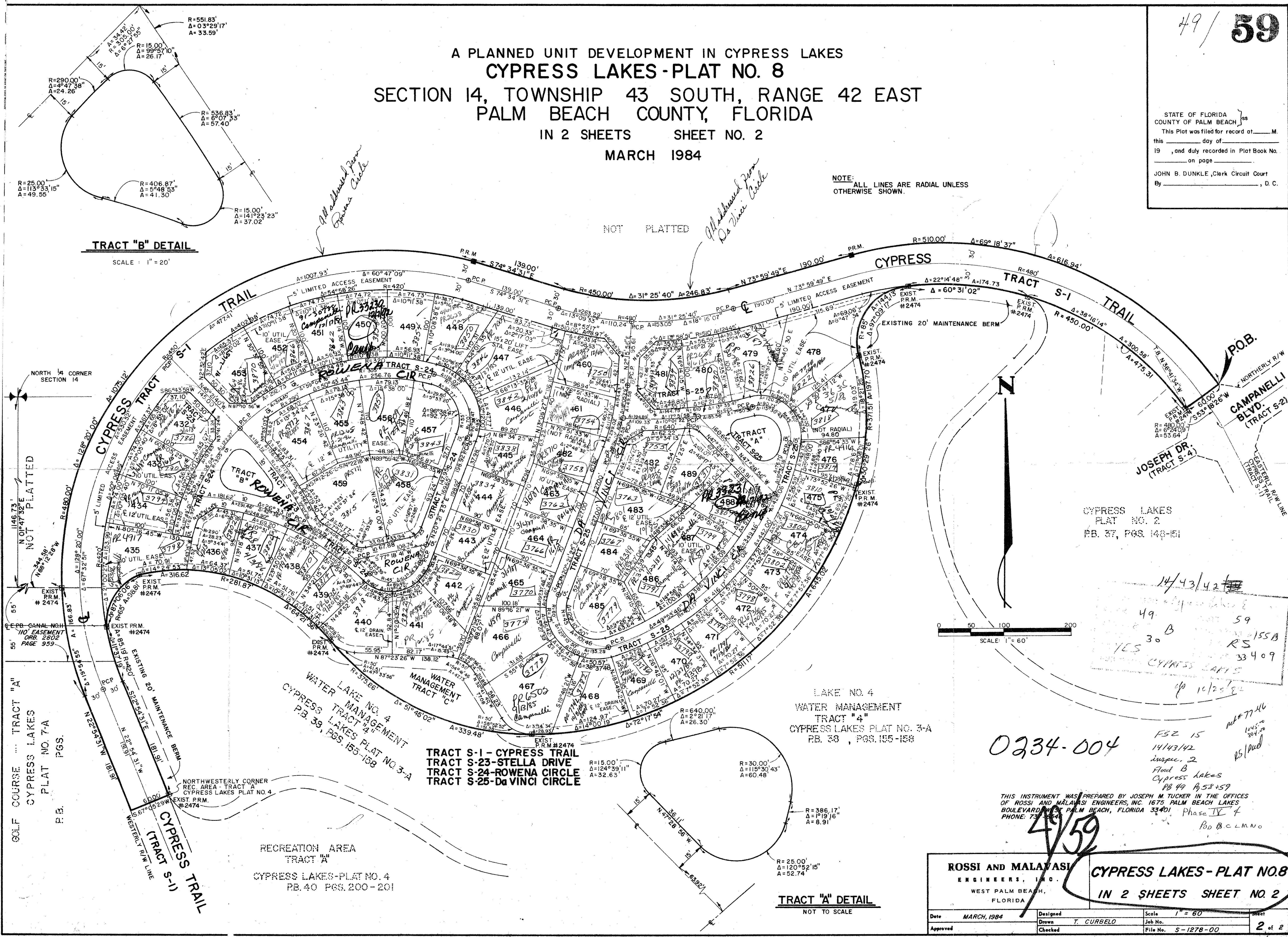
TRACT "B" DETAIL

SCALE: 1" = 20'

NOT PLATTED

TRACT "A" DETAIL

NOT TO SCALE



SCALE: 1" = 60'

CYPRESS LAKES
PLAT NO. 2
PB. 37, PGS. 140-151

Handwritten notes and signatures including '14/43/42', '49 B 59', 'RS 155B', '33409', and 'CYPRESS LAKES'.

0234-004

FSZ 15
14143/42
inspec. 2
Flood B
Cypress Lakes
PB 49 Pgs 453-459
Phase IV
P.O.B. C.L.M.N.O.

THIS INSTRUMENT WAS PREPARED BY JOSEPH M. TUCKER IN THE OFFICES OF ROSSI AND MALAYASI ENGINEERS, INC. 1675 PALM BEACH LAKES BOULEVARD, WEST PALM BEACH, FLORIDA 33411 PHONE: 734-4444

ROSSI AND MALAYASI ENGINEERS, INC. WEST PALM BEACH, FLORIDA		CYPRESS LAKES-PLAT NO. 8 IN 2 SHEETS SHEET NO. 2	
Date	MARCH, 1984	Designed	T. CURBELO
Drawn	T. CURBELO	Scale	1" = 60'
Checked		Job No.	
		File No.	S-1278-00
		Sheet	2 of 2

DRAWING NUMBER

DRAWING NUMBER

DRAWING NUMBER

PLAN HOLD CORPORATION • IRVINE, CALIFORNIA
RECORDED BY NUMBER 07549

PLAN HOLD CORPORATION • IRVINE, CALIFORNIA
RECORDED BY NUMBER 07549

PLAN HOLD CORPORATION • IRVINE, CALIFORNIA
RECORDED BY NUMBER 07549

PLAN HOLD CORPORATION • IRVINE, CALIFORNIA
RECORDED BY NUMBER 07549