

DRAWING NUMBER
49/87

DRAWING NUMBER

DRAWING NUMBER

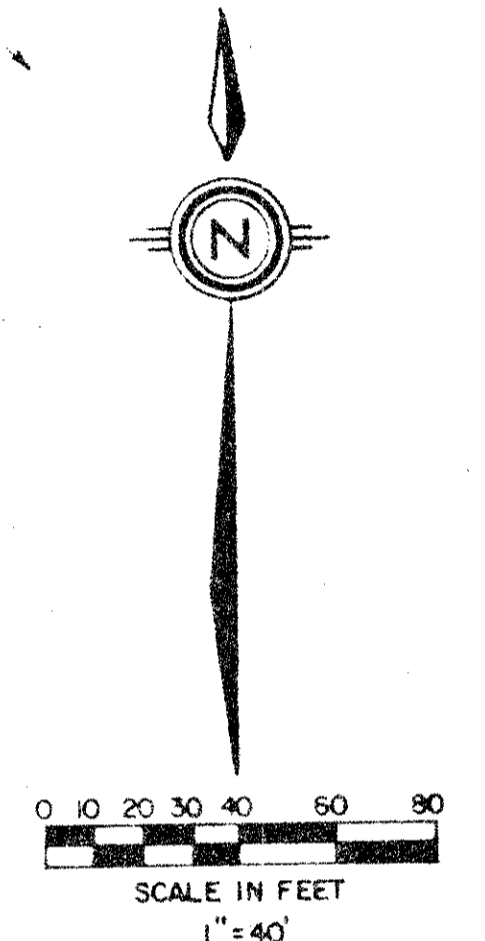
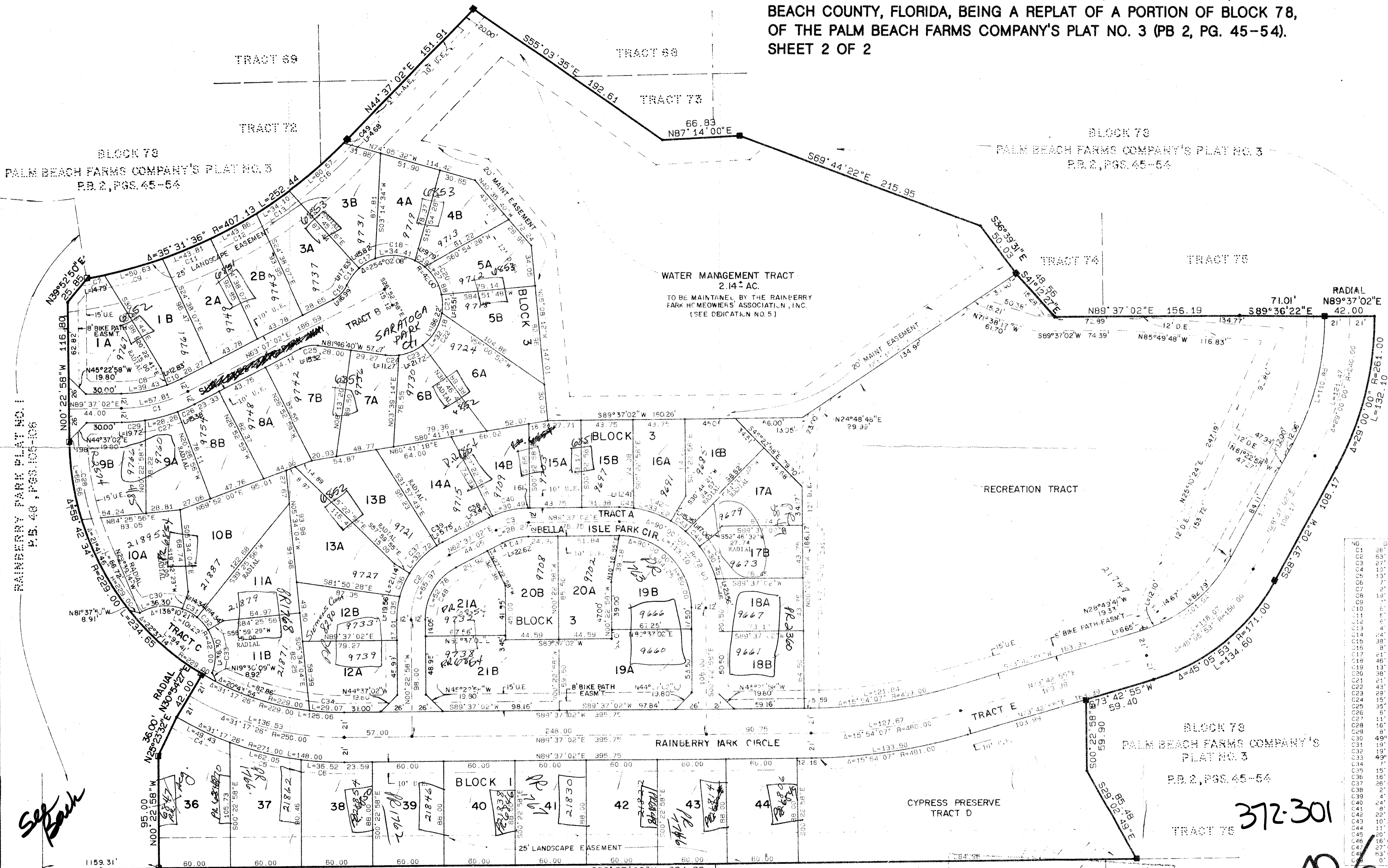
DRAWING NUMBER

RAINBERRY PARK PLAT NO. 2

PART OF RAINBERRY OF WEST BOCA P.U.D.
SITUATE IN SECTION 19, TOWNSHIP 47 SOUTH, RANGE 42 EAST, PALM BEACH COUNTY, FLORIDA, BEING A REPLAT OF A PORTION OF BLOCK 78, OF THE PALM BEACH FARMS COMPANY'S PLAT NO. 3 (PB 2, PG. 45-54).
SHEET 2 OF 2

49/87

STATE OF FLORIDA
COUNTY OF PALM BEACH
THIS PLAT WAS FILED FOR
RECORD AT _____ DAY OF _____
AD, 1984 AND DULY RECORDED
IN PLAT BOOK _____ ON PAGES
_____ AND _____
JOHN B. DUNKLE, CLERK
CIRCUIT COURT
BY: _____, D.C.



NO.	DELTA	RADIUS	LENGTH
C1	26.30 00'	125.00	57.81
C2	53.00 00'	60.00	65.97
C3	27.00 00'	60.00	66.27
C4	12.27 06'	60.00	49.44
C5	13.07 07'	60.00	62.05
C6	7.43 13'	60.00	36.52
C7	9.24 53'	40.00	14.79
C8	9.24 53'	40.00	39.43
C9	7.07 32'	40.00	50.83
C10	6.30 17'	40.00	18.83
C11	7.09 52'	40.00	43.81
C12	1.16 28'	40.00	43.86
C13	4.47 56'	40.00	34.10
C14	24.03 23'	42.00	17.63
C15	38.56 51'	25.00	18.39
C16	8.31 27'	40.00	40.57
C17	21.35 06'	42.00	15.82
C18	46.56 32'	42.00	34.41
C19	13.21 10'	42.00	3.79
C20	38.02 10'	42.00	2.88
C21	21.09 38'	42.00	15.51
C22	43.54 09'	42.00	32.18
C23	28.37 40'	42.00	21.72
C24	15.22 20'	42.00	11.27
C25	39.06 18'	25.00	15.30
C26	5.25 03'	137.00	15.38
C27	11.45 11'	137.00	26.26
C28	16.40 43'	229.00	66.66
C29	8.14 46'	137.00	19.72
C30	49.31 58'	42.00	56.40
C31	19.33 33'	42.00	14.34
C32	19.33 33'	42.00	14.34
C33	49.31 58'	42.00	76.30
C34	7.16 24'	229.00	29.07
C35	15.33 50'	72.00	19.56
C36	16.45 14'	72.00	21.14
C37	26.01 12'	72.00	37.72
C38	2.44 06'	72.00	3.44
C39	4.34 44'	72.00	5.75
C40	24.15 54'	72.00	30.49
C41	8.27 57'	84.00	17.36
C42	22.39 22'	84.00	33.22
C43	10.24 09'	84.00	15.25
C44	11.38 02'	84.00	17.36
C45	20.45 23'	84.00	30.45
C46	16.04 06'	84.00	23.56
C47	27.00 00'	48.00	26.62
C48	13.00 00'	48.00	26.78
C49	0.39 23'	40.00	4.68

372-301

49/87

Meridian Surveying and mapping
WEST PALM BEACH, FLORIDA

DRAWN	M.E.H.	DATE	FEB 1984
CHECKED	M.A.H.	SCALE	1" = 40'
DRAWING NO.	83-P-048		

RAINBERRY PARK P...

RAINBERRY PARK PLAT NO. 1
P.B. 48, PGS. 45-56

P.O.C. S.W. CORNER OF TRACT 71, BLOCK 78

P.O.B.

See Back