

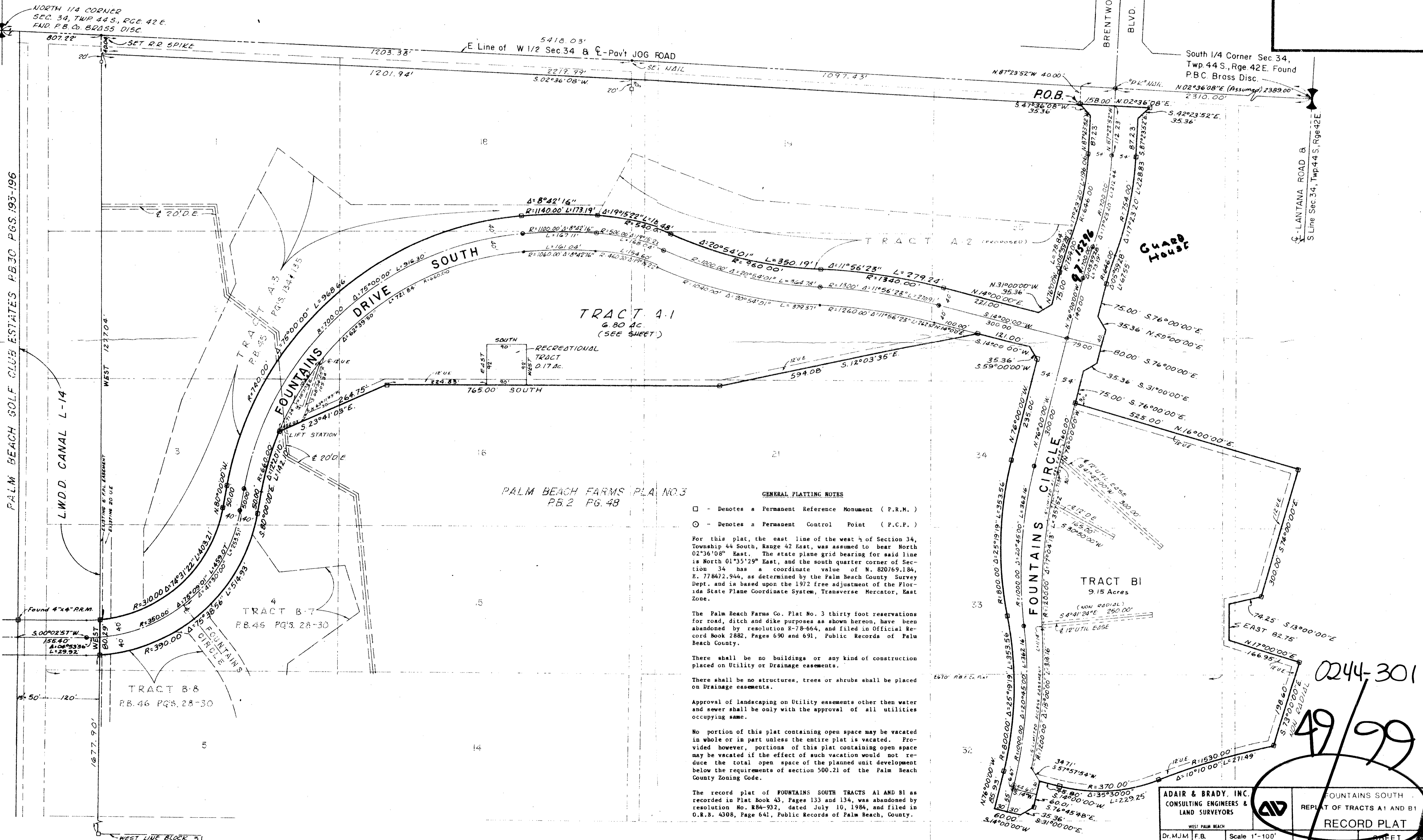
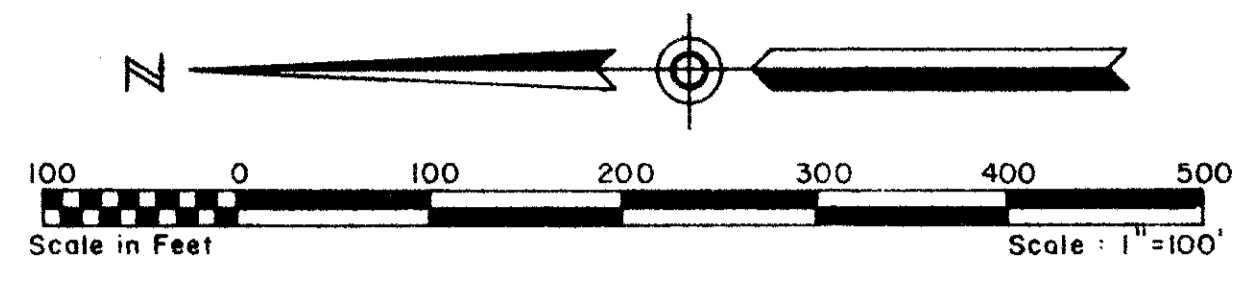
DRAWING NUMBER
49/99

99

A PLANNED UNIT DEVELOPMENT

Fountains South

REPLAT OF TRACTS A1 AND B1



PALM BEACH FARMS PLA. NO. 3
PB. 2 PG. 48

- GENERAL PLATTING NOTES**
- - Denotes a Permanent Reference Monument (P.R.M.)
 - - Denotes a Permanent Control Point (P.C.P.)

For this plat, the east line of the west 1/2 of Section 34, Township 44 South, Range 42 East, was assumed to bear North 02°36'08" East. The state plane grid bearing for said line is North 01°35'29" East, and the south quarter corner of Section 34 has a coordinate value of N. 820769.184, E. 778472.944, as determined by the Palm Beach County Survey Dept. and is based upon the 1972 free adjustment of the Florida State Plane Coordinate System, Transverse Mercator, East Zone.

The Palm Beach Farms Co. Plat No. 3 thirty foot reservations for road, ditch and dike purposes as shown hereon, have been abandoned by resolution R-78-664, and filed in Official Record Book 2882, Pages 690 and 691, Public Records of Palm Beach County.

There shall be no buildings or any kind of construction placed on Utility or Drainage easements.

There shall be no structures, trees or shrubs shall be placed on Drainage easements.

Approval of landscaping on Utility easements other than water and sewer shall be only with the approval of all utilities occupying same.

No portion of this plat containing open space may be vacated in whole or in part unless the entire plat is vacated. Provided however, portions of this plat containing open space may be vacated if the effect of such vacation would not reduce the total open space of the planned unit development below the requirements of section 500.21 of the Palm Beach County Zoning Code.

The record plat of FOUNTAINS SOUTH TRACTS A1 AND B1 as recorded in Plat Book 43, Pages 133 and 134, was abandoned by resolution No. R84-932, dated July 10, 1984, and filed in O.R.B. 4308, Page 641, Public Records of Palm Beach, County.

0244-301

49/99

ADAIR & BRADY, INC. CONSULTING ENGINEERS & LAND SURVEYORS		FOUNTAINS SOUTH REPLAT OF TRACTS A1 AND B1 RECORD PLAT	
Dr. MJM	F.B.	Scale 1"=100'	SHEET
Ck.	P.Q.	Date SEPT. 1984	823
Ap.		Job No. 9562J	2 OF 3

DRAWING NUMBER
PSS. 193-196

DRAWING NUMBER
PSS. 28-30

DRAWING NUMBER
PSS. 28-30